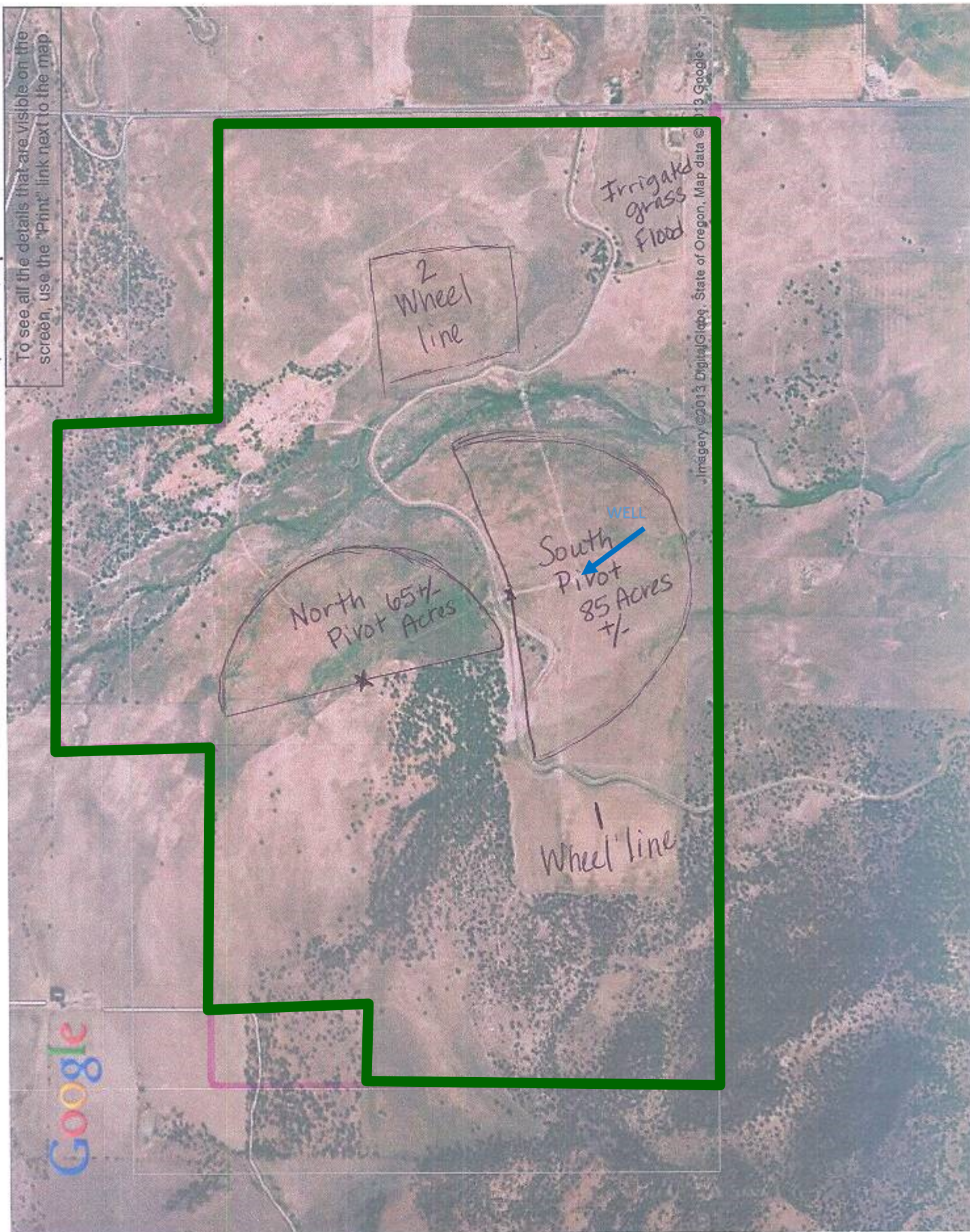


North

To see all the details that are visible on the screen, use the "Print" link next to the map.



Imagery ©2013 DigitalGlobe, State of Oregon, Map data © 2013 Google





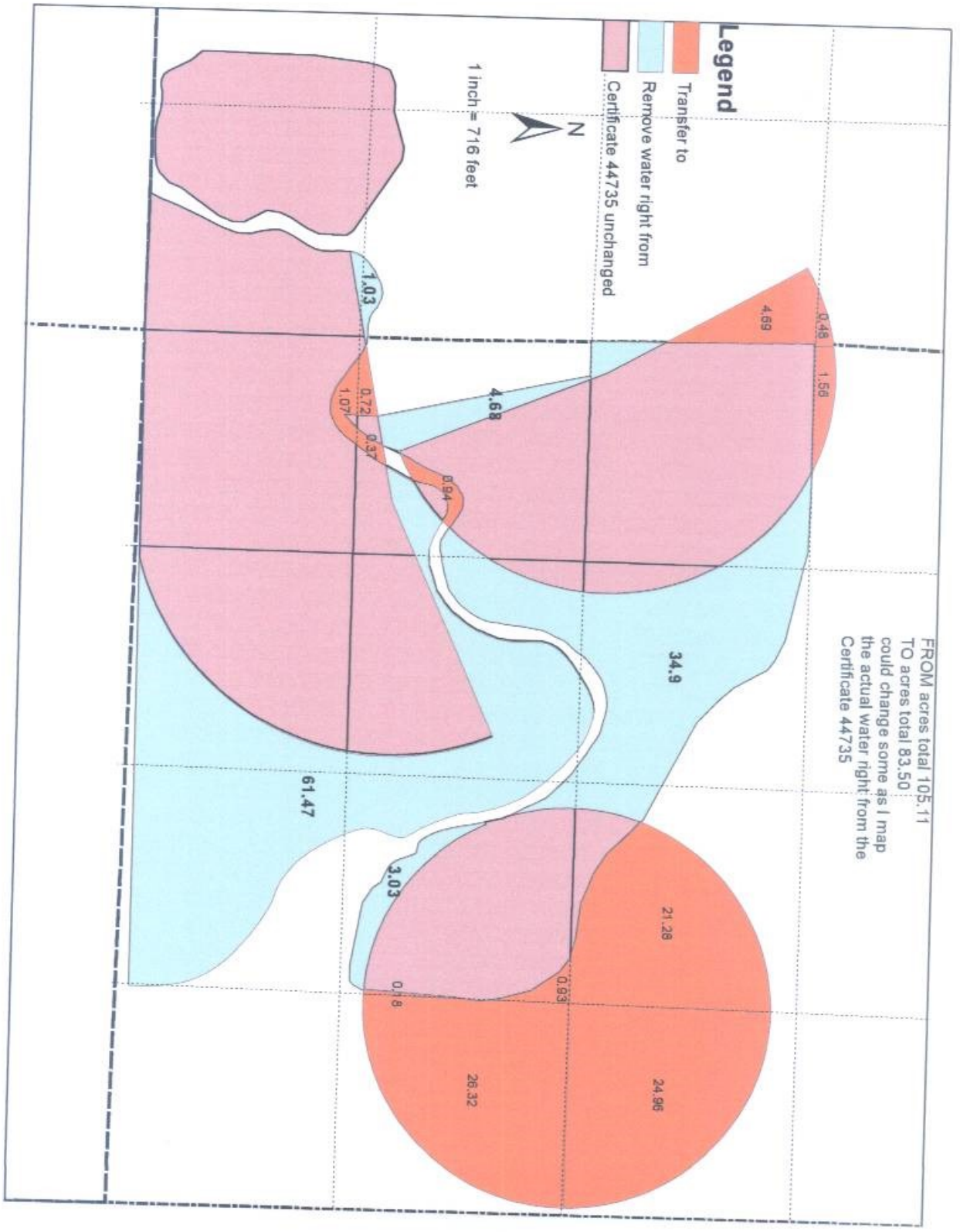
FROM acres total 105.11  
 TO acres total 83.50  
 could change some as I map  
 the actual water right from the  
 Certificate 44735

# Legend

- Transfer to
- Remove water right from
- Certificate 44735 unchanged



1 inch = 716 feet

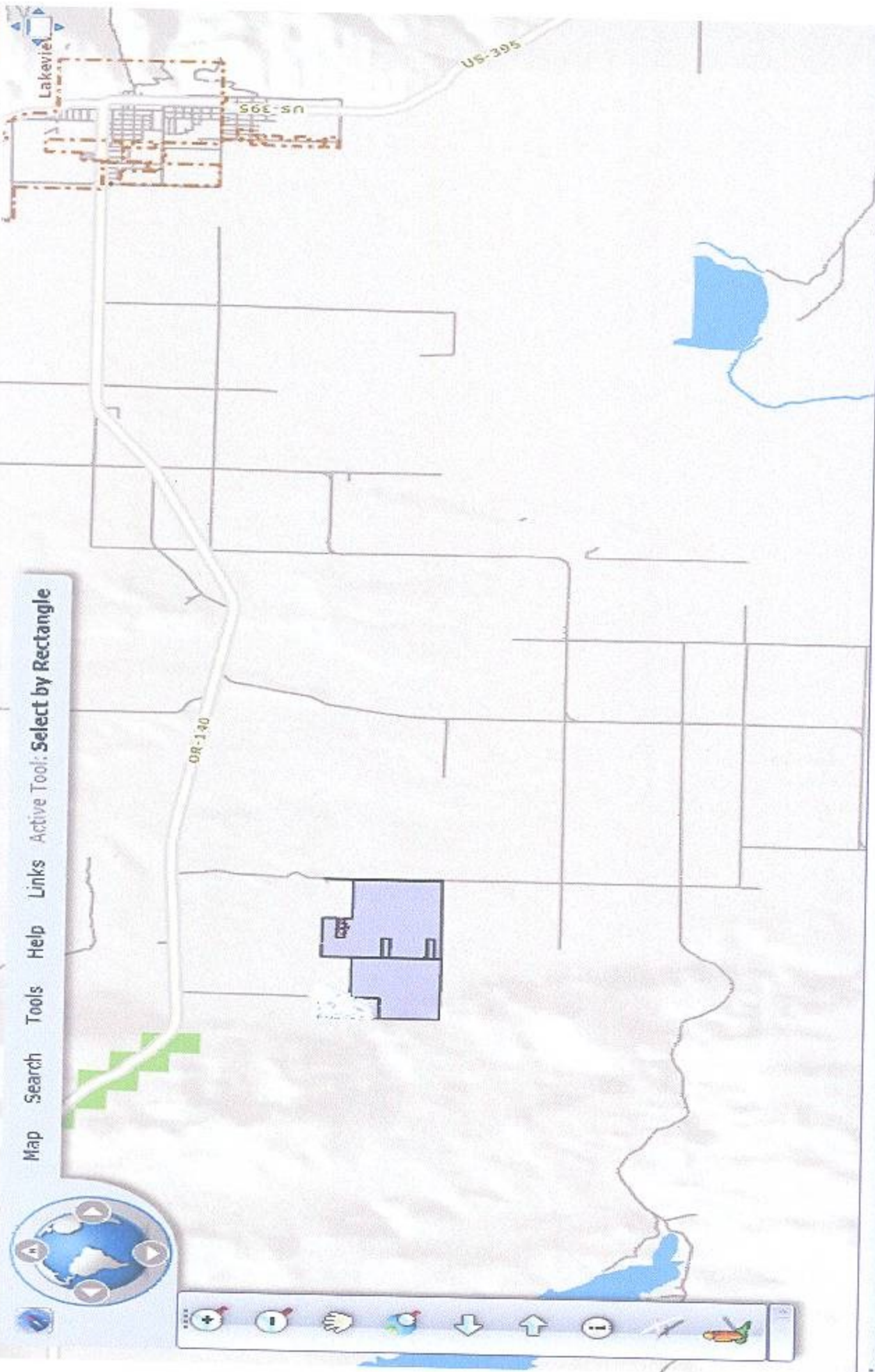




## Lake County

Map Search Tools Help Links Active Tool: **Select by Rectangle**

Comments or Questions? [Email](#)



1:101151

X: 4910678.52, Y: 196383.51



THIS MAP WAS PREPARED FOR  
ASSESSMENT PURPOSE ONLY

T.39S. R.18E. W.M.  
LAKE COUNTY  
T = 2007

39S18E

LOCATED - 2012 C&G 10-40

CANCELLED  
101 THRU  
105  
140C THRU  
160C  
270C THRU  
280C  
290C THRU  
300C  
310C  
380C THRU  
400C  
700C  
710C

