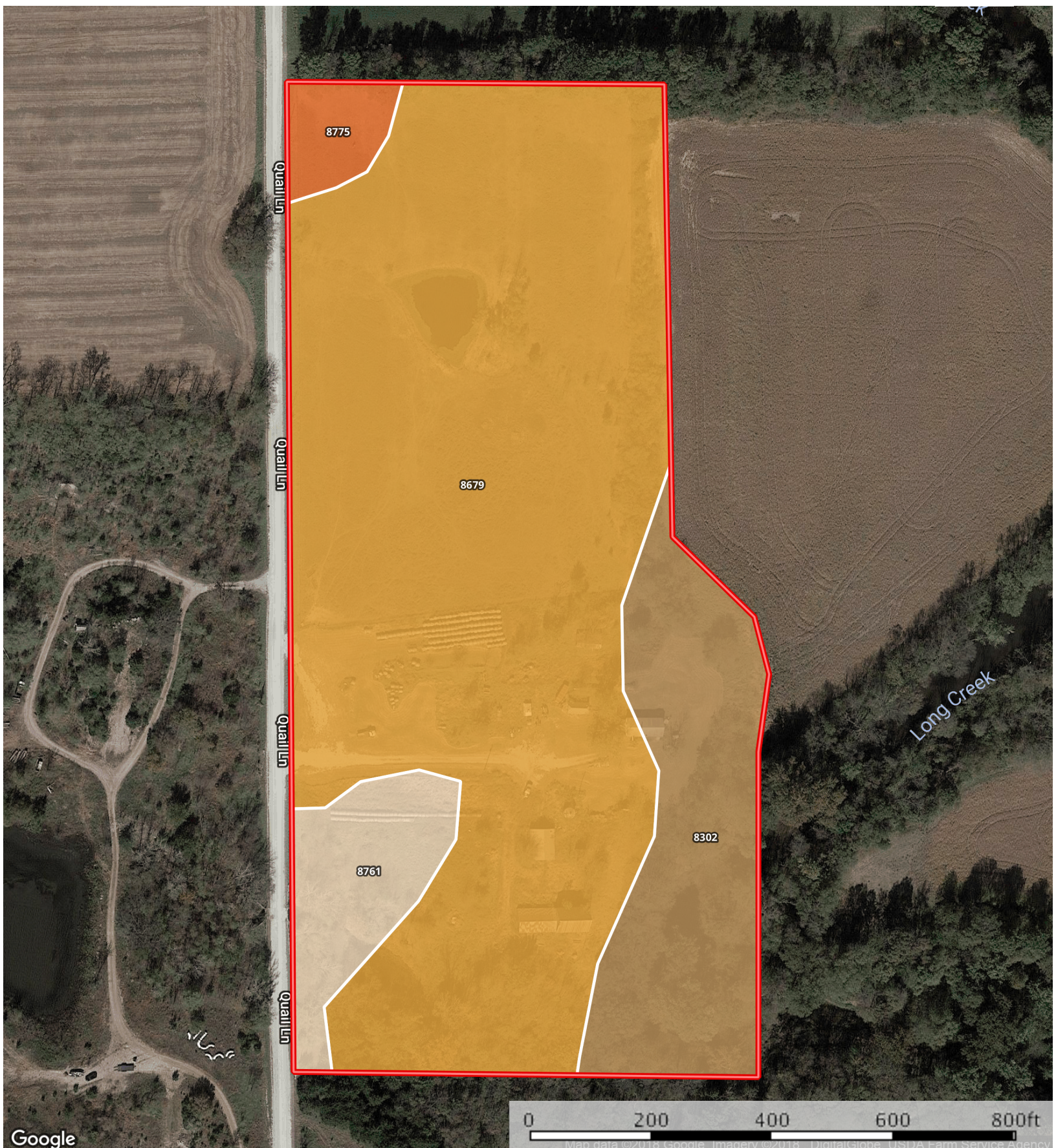


Quail Lane

Kansas, 16 AC +/-



 Boundary


|  Boundary 16.4 ac

| SOIL CODE | SOIL DESCRIPTION | ACRES | % | CAP |
|-----------|---|-------|-------|------|
| 8302 | Verdigris silt loam, occasionally flooded | 2.7 | 16.75 | 3w |
| 8775 | Kenoma silt loam, 1 to 3 percent slopes | 0.4 | 2.5 | 3e |
| 8761 | Eram-Shidler silty clay loams, 4 to 15 percent slopes | 1.1 | 6.75 | 6e |
| 8679 | Dennis silt loam, 1 to 3 percent slopes | 12.1 | 74.01 | 2e |
| TOTALS | | 16.4 | 100% | 2.46 |

Capability Legend

Increased Limitations and Hazards

Decreased Adaptability and Freedom of Choice Users

| Land, Capability Class(non-irrigated) |  | | | | | | | |
|---------------------------------------|--|---|---|---|---|---|---|---|
| | 1 | 2 | 3 | 4 | 5 | 6 | 7 | 8 |
| 'Wild Life' | • | • | • | • | • | • | • | • |
| Forestry | • | • | • | • | • | • | • | |
| Limited | • | • | • | • | • | • | • | |
| Moderate | • | • | • | • | • | • | | |
| Intense | • | • | • | • | • | | | |
| Limited | • | • | • | • | | | | |
| Moderate | • | • | • | | | | | |
| Intense | • | • | | | | | | |
| Very Intense | • | | | | | | | |

Grazing Cultivation

(c) climatic limitations (e) susceptibility to erosion

(s) soil limitations within the rooting zone (w) excess of water