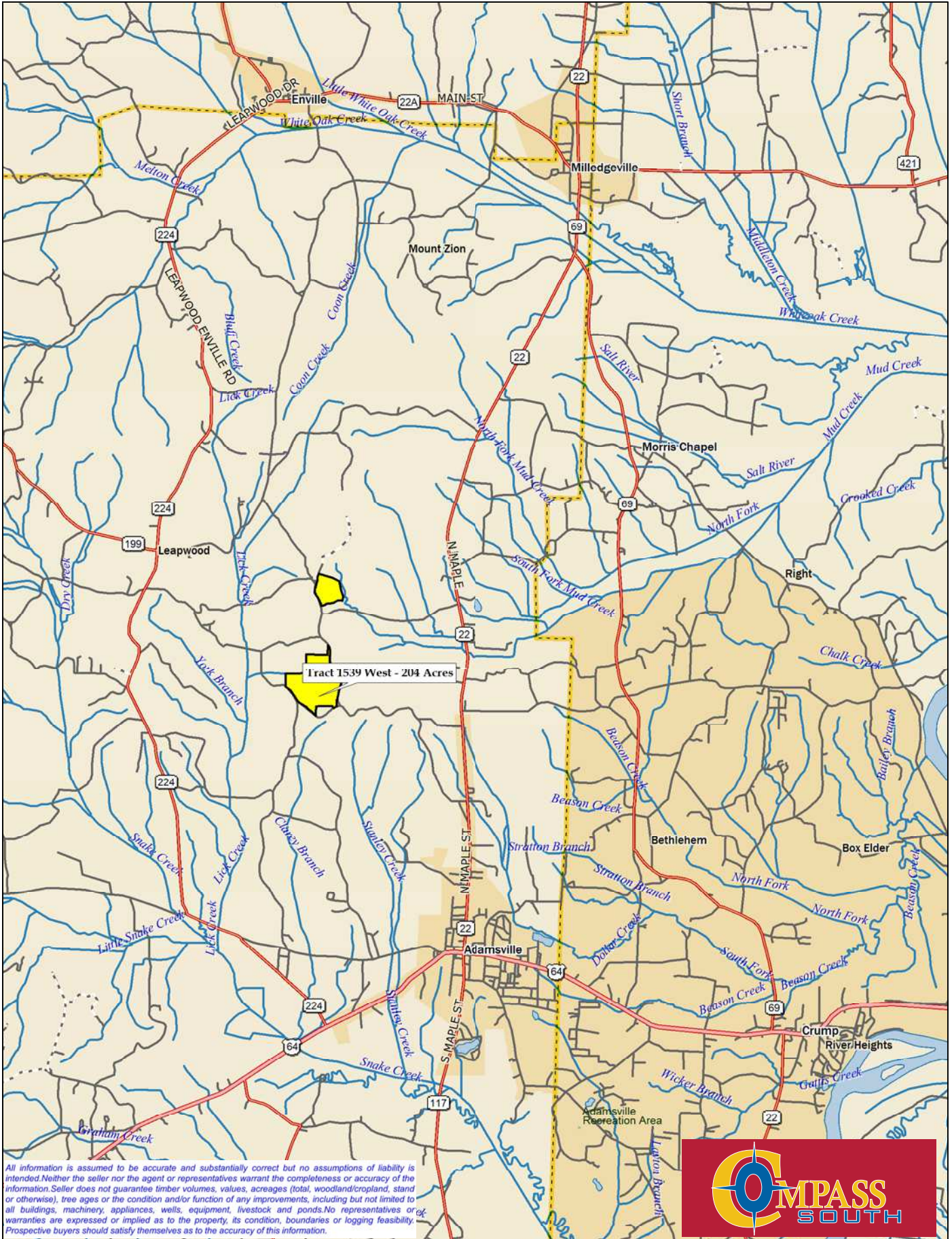


Data use subject to license.

© DeLorme. XMap® 5.2 GIS Enterprise.

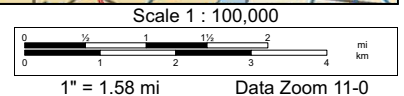
www.delorme.com



Data use subject to license.

© DeLorme. XMap® 5.2 GIS Enterprise.

www.delorme.com



McNairy Co TN Tract 1539 West +/- 204 Acres



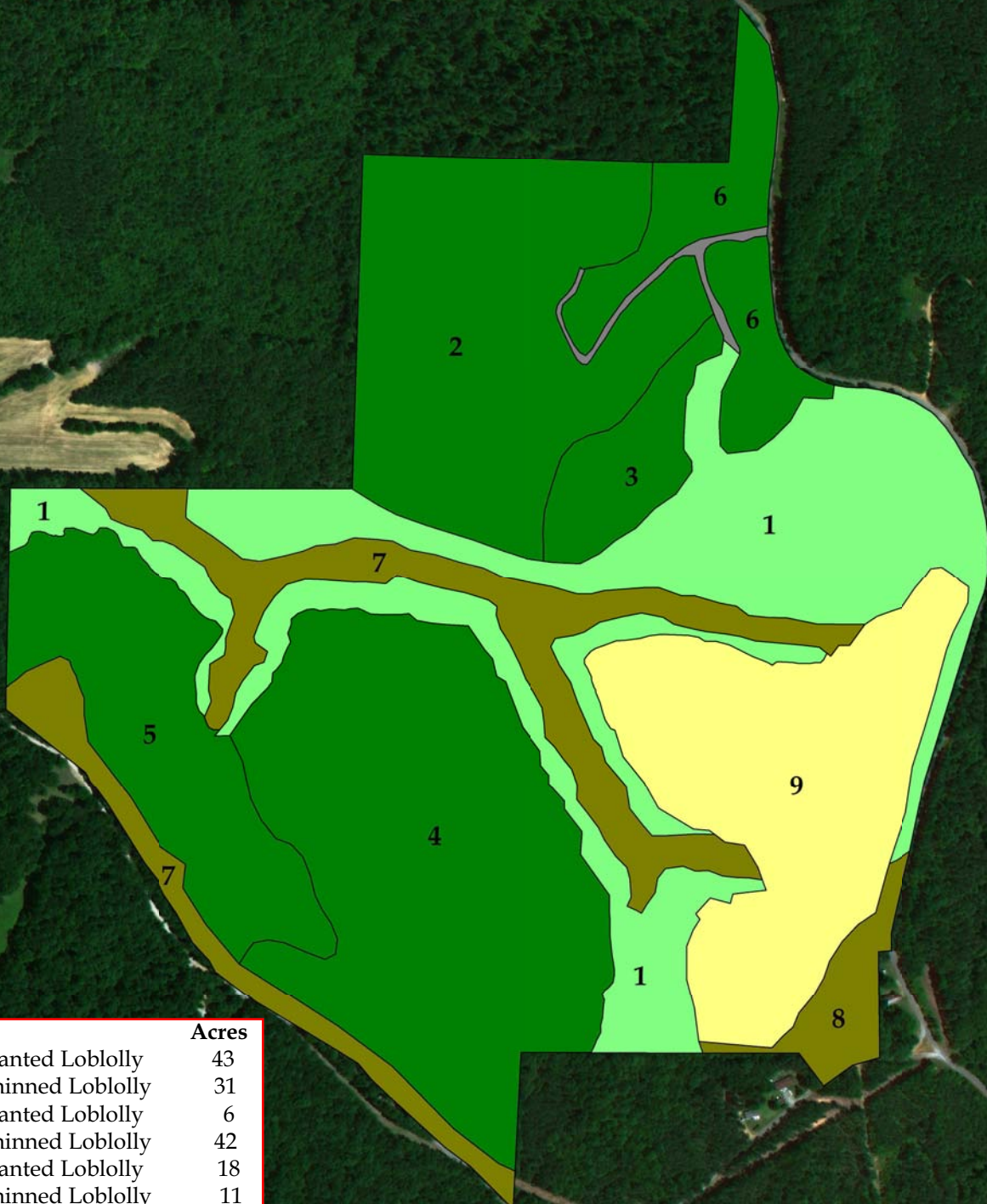
All information is assumed to be accurate and substantially correct but no assumptions of liability is intended. Neither the seller nor the agent or representatives warrant the completeness or accuracy of the information. Seller does not guarantee timber volumes, values, acreages (total, woodland/cropland, stand or otherwise), tree ages or the condition and/or function of any improvements, including but not limited to all buildings, machinery, appliances, wells, equipment, livestock and ponds. No representatives or warranties are expressed or implied as to the property, its condition, boundaries or logging feasibility. Prospective buyers should satisfy themselves as to the accuracy of this information.

0 ft 500 ft 1000 ft 1500 ft 2000 ft



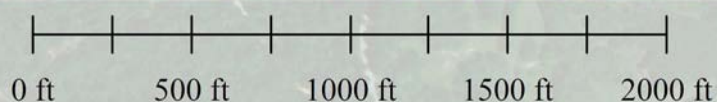
Compass South, Inc.

McNairy Co TN Tract 1539 West +/- 204 Acres



Stand #	Type	Acres
1	2008 Planted Loblolly	43
2	1999 Thinned Loblolly	31
3	1999 Planted Loblolly	6
4	1998 Thinned Loblolly	42
5	1998 Planted Loblolly	18
6	1996 Thinned Loblolly	11
7	1974 Upland Hardwood	21
8	1973 Upland Hardwood	4
9	Open Productive	28
Total		204

All information is assumed to be accurate and substantially correct but no assumptions of liability is intended. Neither the seller nor the agent or representatives warrant the completeness or accuracy of the information. Seller does not guarantee timber volumes, values, acreages (total, woodland/cropland, stand or otherwise), tree ages or the condition and/or function of any improvements, including but not limited to all buildings, machinery, appliances, wells, equipment, livestock and ponds. No representatives or warranties are expressed or implied as to the property, its condition, boundaries or logging feasibility. Prospective buyers should satisfy themselves as to the accuracy of this information.



Compass South, Inc.