

Monroe/Highland Twp  
Muskingum County  
Ohio

# For Sale

## 194.7<sup>±</sup> Acres

Excellent Hunting • Fencing for  
Livestock • Pasture & Hay Acres

194.73<sup>±</sup> Total Acres

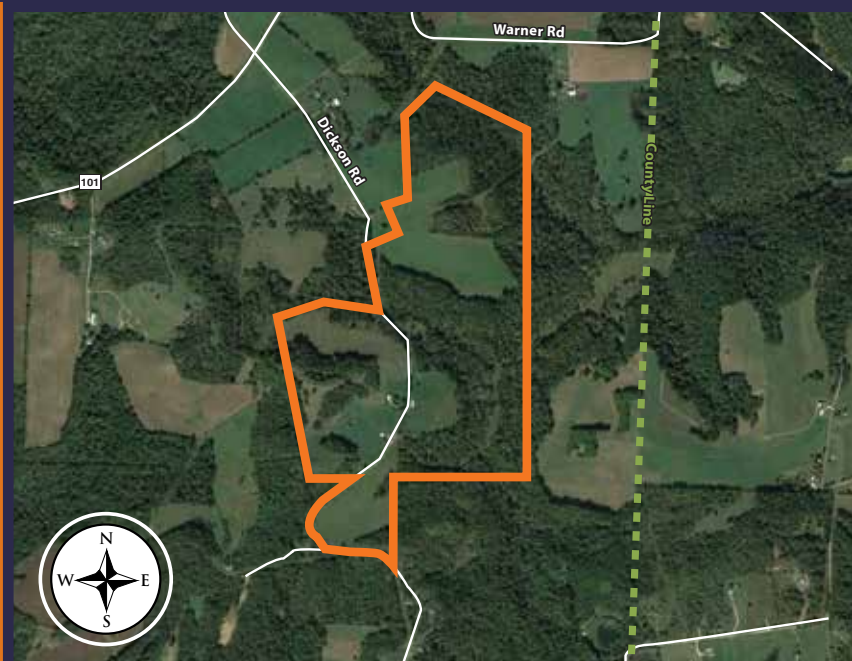
37<sup>±</sup> Tillable

117<sup>±</sup> Wooded

2<sup>±</sup> Home Site

37<sup>±</sup> Fenced Pasture

1.73<sup>±</sup> Other



3 Bedroom House, Steel Building, Open Bay Barn, Storage Barns

Robert McNamara

614.309.6551

robertm@halderman.com



HALDERMAN

REAL ESTATE & FARM MANAGEMENT

HLS# RDM-12186 (18)

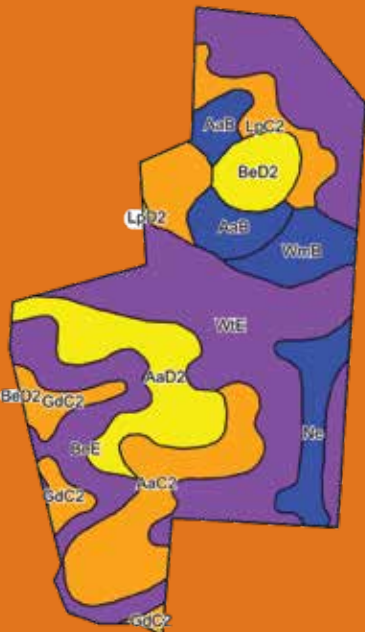
800.424.2324 | halderman.com



*For Sale*  
194.7<sup>±</sup> Acres



**robertm@halderman.com**



Code	Soil Description Field borders provided by Farm Service Agency as of 5/21/2008. Soils data provided by USDA and NRCS.	Acres
WtE	Westmoreland silt loam, 25 to 35 percent slopes	69.04
AaC2	Aaron silt loam, 8 to 15 percent slopes, eroded	21.72
AaD2	Aaron silt loam, 15 to 25 percent slopes, eroded	20.58
BeE	Berks channery silt loam, 25 to 35 percent slopes	20.55
LpC2	Lowell silt loam, moderately wet, 8 to 15 percent slopes	14.96
AaB	Aaron silt loam, 2 to 8 percent slopes	10.29
Ne	Newark silt loam, 0 to 3 percent slopes, frequently flooded	9.52
WmB	Westgate silt loam, 2 to 6 percent slopes	8.21
GdC2	Gilpin silt loam, 8 to 15 percent slopes	8.18
BeD2	Berks channery silt loam, 15 to 25 percent slopes, eroded	7.71
LpD2	Lowell silt loam, moderately wet, 15 to 25 percent slopes	0.16
<b>Weighted Average</b>		