



StandID

2008 Planted Pine, Upland (+/- 60 ac)

TType Map
#03446 Southeast Hebron

+/- 60 acres (Taxes)

Sec. 26,35-10S/11W

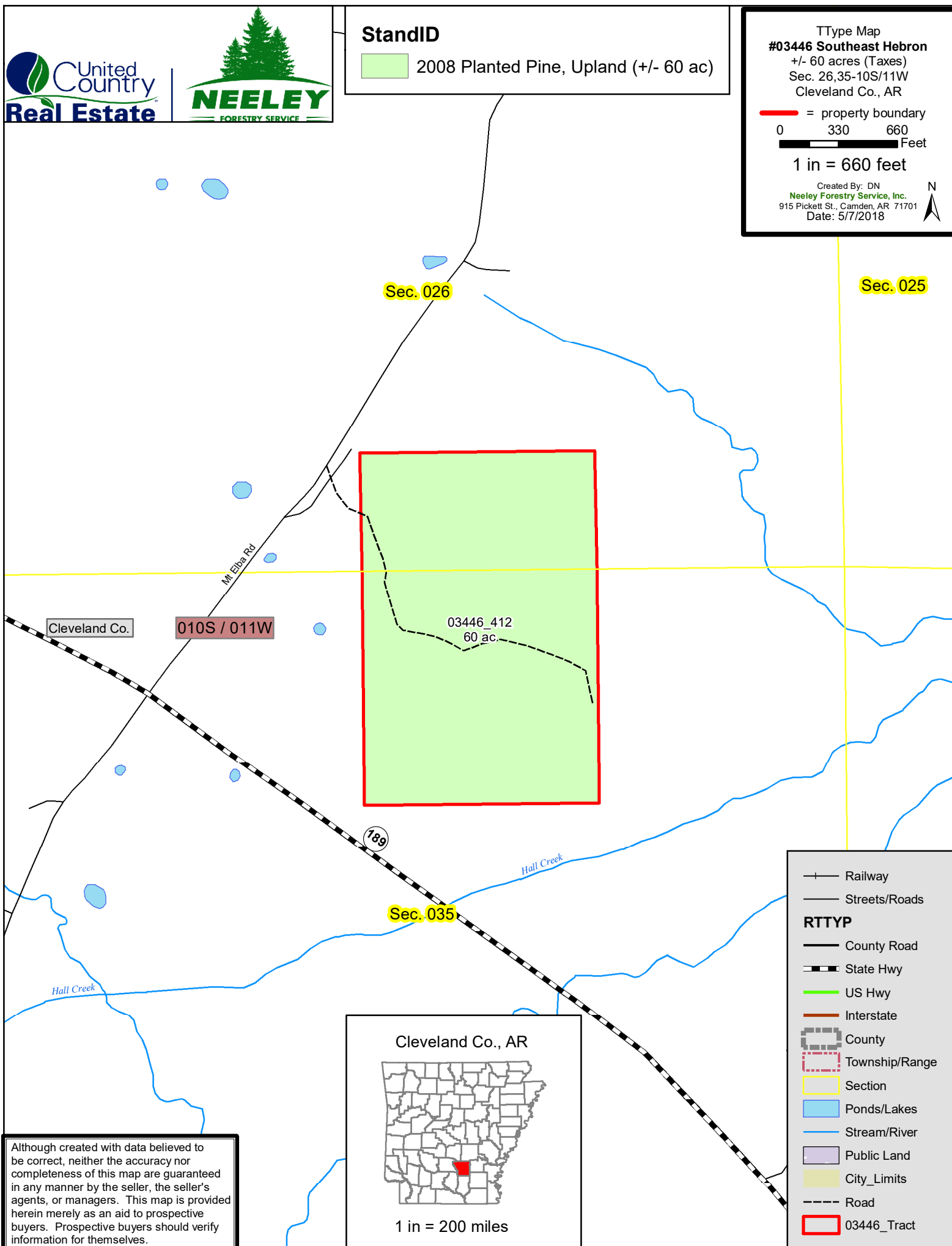
Cleveland Co., AR

— = property boundary

0 330 660
Feet

1 in = 660 feet

Created By: DN
Neeley Forestry Service, Inc.
915 Pickett St., Camden, AR 71701
Date: 5/7/2018



Although created with data believed to be correct, neither the accuracy nor completeness of this map are guaranteed in any manner by the seller, the seller's agents, or managers. This map is provided herein merely as an aid to prospective buyers. Prospective buyers should verify information for themselves.