

NAPALLACHIAN FARM

Sandlick Rd.
RT 71/13

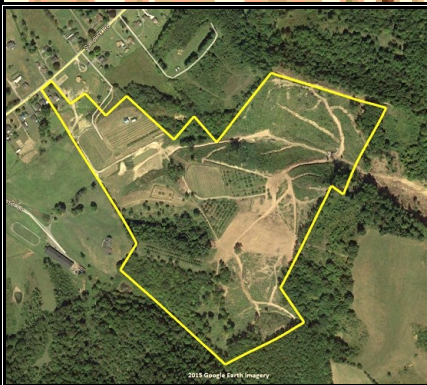
Sandlick

2700

FOXFIRE
REALTY

NAPALLACHIAN FARM (topographic map)
Mercer County, West Virginia
Elevation Range: 2584' - 2860' +/-; Google Coordinates:
LAT 37.340915 (N), LON -81.217089 (W) This map is for
general location purposes. Consult a licensed surveyor
for exact boundary and acreage information.

RICHARD GRIST, Broker - Auctioneer - Forester
304.646.8837 Richard@Foxfirenation.com
WWW.FOXFIRENATION.COM



SCALE 1:4800

