



John Hall & Company

Land | Commercial | Investment Property  
www.JohnHallCo.com

John Matulia

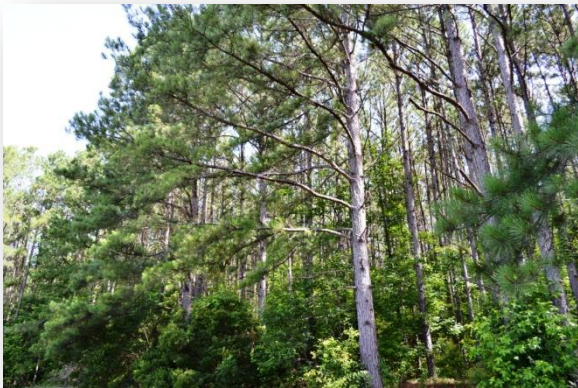
334.312.0507

jmatulia@johnhallco.com

## Elmore Co. Home-Site

21.17 +/- acres

Elmore County, AL



**LOCATION:** Tallassee Hwy, Eclectic, AL 36024 (Hwy 14, Elmore County)

**TERRAIN:** flat w/ great home-site, pond and mature timber

**ACRES:** 21.17 +/-

**LAND USE:** Home-site, fishing, recreational

**PRICE:** \$115,000

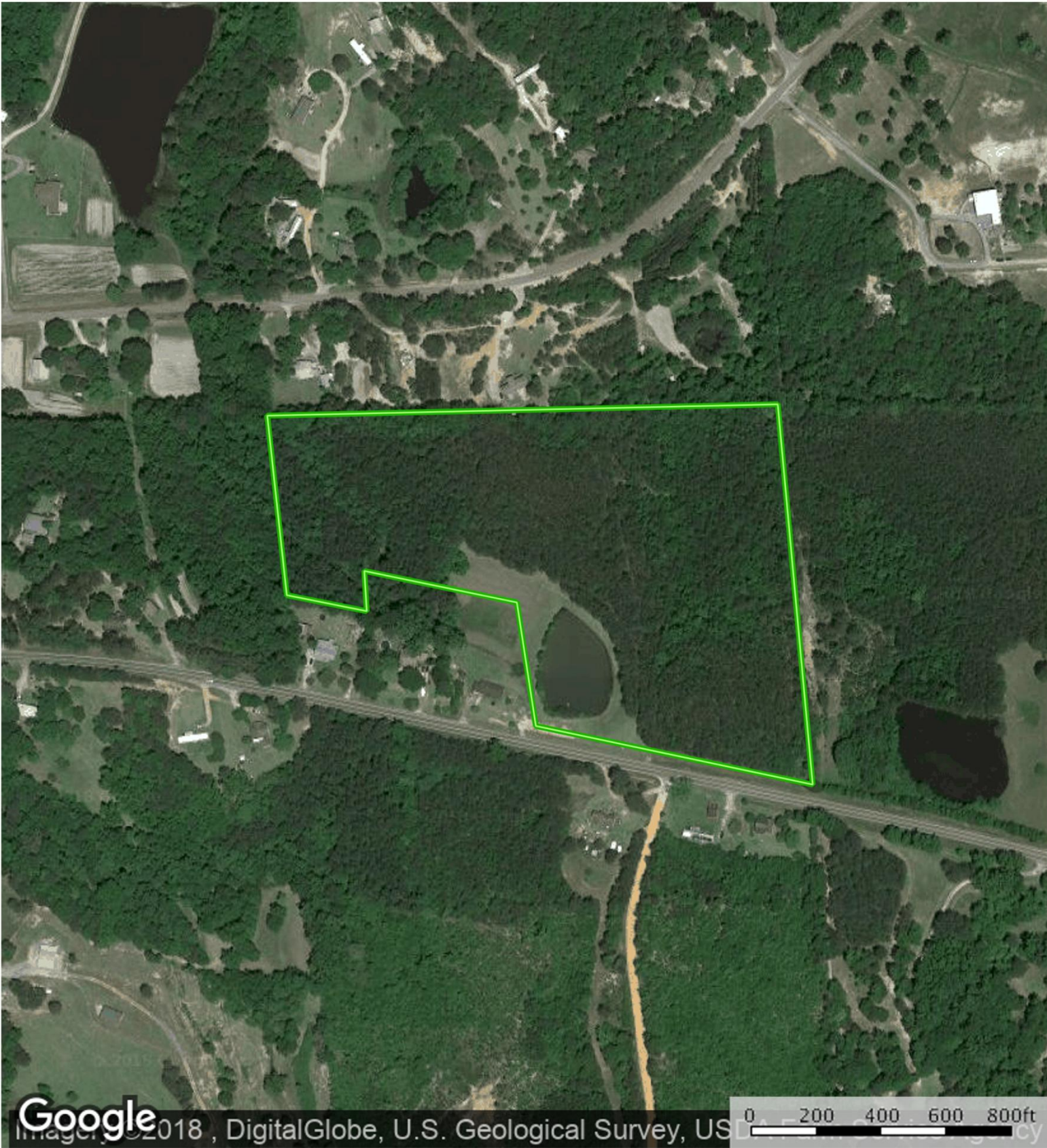
**AGENT:** John Matulia 334.312.0507 jmatulia@johnhallco.com

**SPECIAL FEATURES:** This is a beautiful 21.17 +/- acre home-site located in Elmore County, Alabama. The property is located in the Eclectic area, between Tallassee and Wetumpka, on Hwy 14. This is an ideal location to build your dream home in the country. The topography is level with multiple home-sites to choose from, along with great views overlooking the pond and timber. On the property there is a large amount of mature pine timber, with immediate income for anyone desiring to thin the timber. As mentioned there is a gorgeous pond on the property that provides fishing and amazing views. Power and water are also available. For more details or to set up an appointment to view this property please contact John Hall and Company.

This company, or any of its agents, will not be held responsible for any false or misleading information. Information is collected by agents from sources that agent deems reliable. Agent has used his best efforts and good faith to obtain reliable information.

4163 CARMICHAEL ROAD | MONTGOMERY, ALABAMA 36106 | 334.270.8400  
www.JohnHallCo.com





Boundary




Norton  
Elmore County, Alabama, AC +/-



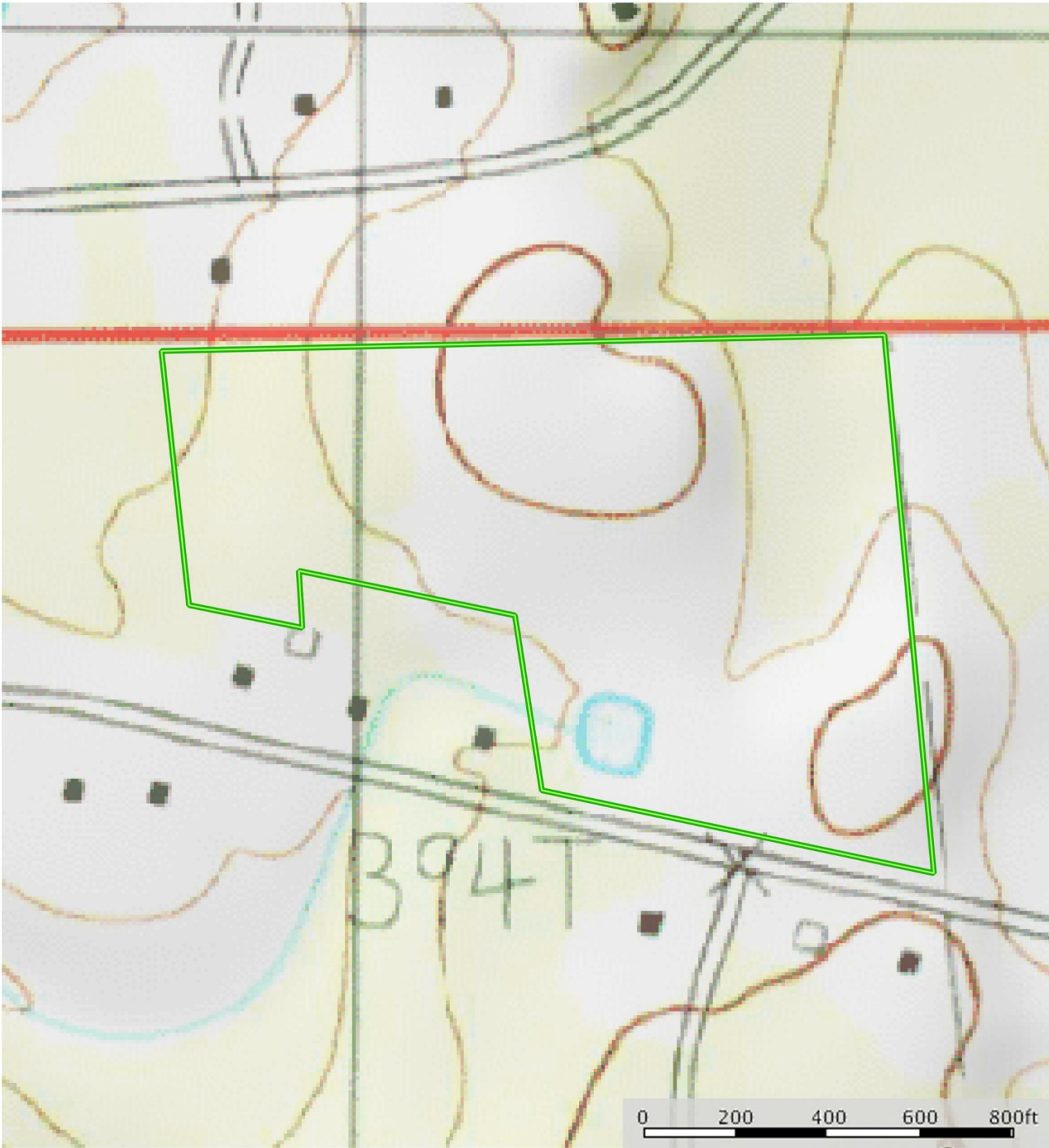
Boundary





 Boundary

Norton  
Elmore County, Alabama, AC +/-



Boundary

















