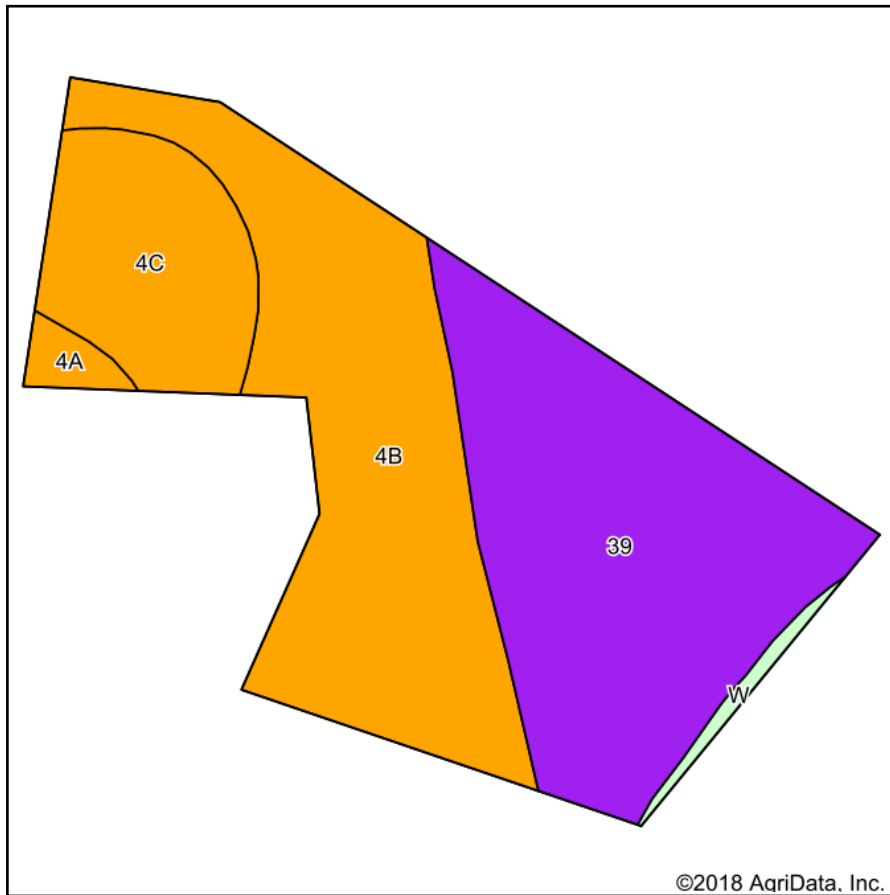
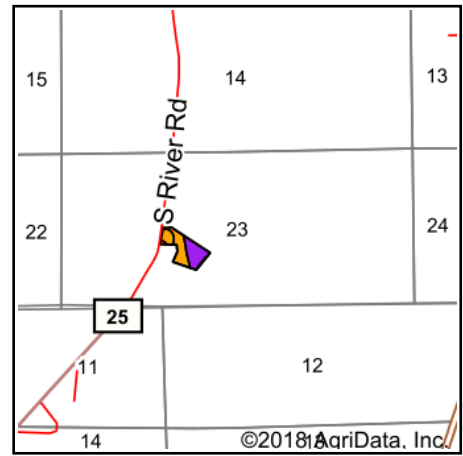


Soils Map



Soils data provided by USDA and NRCS.



State: **Michigan**
 County: **Cass**
 Location: **23-8S-13W**
 Township: **Porter**
 Acres: **5.5**
 Date: **7/23/2018**



Maps Provided By:



Area Symbol: MI027, Soil Area Version: 14

Code	Soil Description	Acres	Percent of field	Non-Irr Class Legend	Non-Irr Class *c	Irr Class *c	Corn	Grass legume hay	Pasture	Soybeans	Winter wheat
39	Cohoctah loam	2.32	42.2%		Vw						
4B	Oshtemo sandy loam, 2 to 6 percent slopes	2.19	39.8%		IIIls	IIIle	114	3.7	7.5	39	45
4C	Oshtemo sandy loam, 6 to 12 percent slopes	0.83	15.1%		IIIle	IIIle					
4A	Oshtemo sandy loam, 0 to 2 percent slopes	0.09	1.6%		IIIls	IIIls	114	3.7	7.5	39	46
W	Water	0.07	1.3%								
Weighted Average							47.3	1.5	3.1	16.2	18.7

*c: Using Capabilities Class Dominant Condition Aggregation Method

Soils data provided by USDA and NRCS.