

INVESTMENT/DEVELOPMENT PROPERTY FOR SALE

LANCASTER COUNTY
87 +/- ACRES
\$1,740,000

Excellent investment/developmental property, located within 3 miles of Lincoln's city limit. The future East Beltway will be located less than a mile west of this property. Currently the property is a tree nursery that contains multiple varieties of trees. Potential for sub-division and development.



SELLER: Duane "Bud" Speidell

LEGAL: Lot 16 in the Northwest Quarter (NW4) of Section 9, Township 9 North, Range 8 East of the 6th PM in Lancaster County, Nebraska.

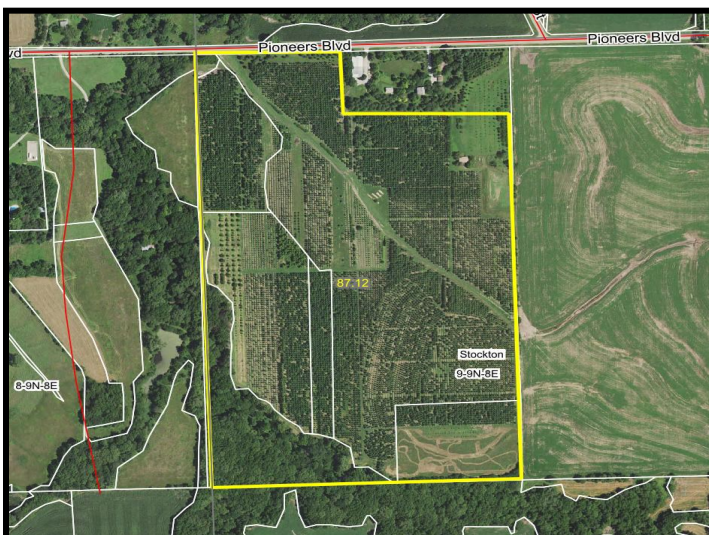
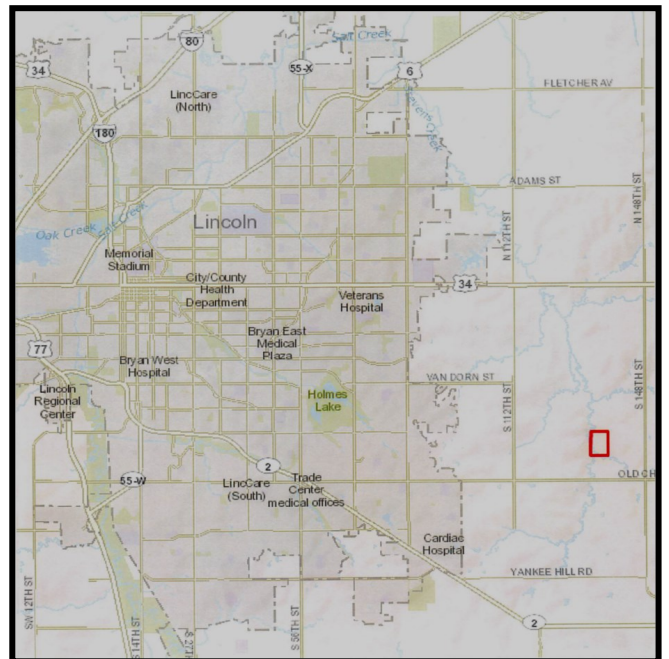
LOCATION: Property is located approximately 4 blocks west of County Road 138 on the south side of Pioneer Blvd or approximately 3.5 miles east of 84th Street on Pioneers Blvd.

EASEMENTS: Sellers are not aware of any easements.

SIZE: Approximately 87+/- acres. Final acres will be determined by a survey.

POSSESSION: Immediate

SCHOOL DISTRICT: Waverly



Jeff Frack, Sales Assoc.
402-434-4497 or 402-480-4945
Jeff.Frack@ufarm.com

Ethan Sorensen, Sales Assoc.
402-434-4499 or 402-380-0432
Ethan.Sorensen@ufarm.com

1248 'O' Street, Suite 1000
Lincoln, NE 68508

Please visit our website for more information: www.ufarmrealestate.com

The information contained herein is deemed reliable. We have no reason to doubt its accuracy, but we do not guarantee it. The prospective buyer should verify all information contained herein.