



1885 Beverly Street  
Newton, NC 28658

4 Bedrooms ♦ 4½ Bathrooms ♦ 4 Stall Barn  
Detached Garage/Workshop ♦ 6.29 Acres



*Breedlove*  
FARMS ★ ESTATES ★ LAND  
POWERED BY  
**exp**  
REALTY

Jo Zarnoch  
704-400-1701

horseloverjoz@breedlovecarolinas.com  
www.breedlovefarmsestatesandland.com





**1885 Beverly St.  
Newton, NC 28658**

**Combine a horse enthusiast and mix with an automotive restorer and blend together in one household, and you have this unique property.**

**Not only is the farm a haven for animals but a restorer's dream. The 4-stall barn with water and power, added to the 30 x 40 outbuilding with 2 overhead doors, makes for an oasis of needs and passions.**

**If you drive to the end of a quiet cul-de-sac you will enter the property on a long, paved driveway. Your first impression will be of the peaceful looking porch running the length of the home. In addition, in the rear of the home is a full length trex deck for overlooking the pastures. The pastures are both open and canopied with trees to cool your horses on the hottest of NC days.**

**The home itself could definitely become a multi-family estate. The basement has a large wet bar and sink with full bath and vanity. Add some kitchen appliances, and cabinets, and voila' a second living quarter is created with its own door and entrance.**

**The main level has master bedroom and guest bedroom, with 2 bedrooms and bath up.**

**Newton is approximately one hour from Charlotte Douglas International Airport and boasts of family times with parks and walking trails. It is 18 minutes to Hickory, a good-sized city of over 40,000 which is known as a furniture center for the Southeast. Hickory also has a convention center, closeness to Appalachian Mts. and was once awarded the 10<sup>th</sup> best city in the US to live.**

**Newton is definitely a wonderful place to call home, and has potentials for site seeing, closeness to colleges within driving distance such as Catawba Community College, Lenoir Rhyne, and Appalachian Center at Hickory. Medical facilities and hospitals are in close proximity.**



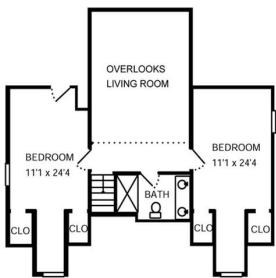
# Aerial View



PID # 3638171144350000 ♦ 6.29 Acres

## Floor Plan

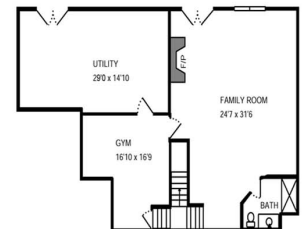
3,498 Sq. ft.



Upper Level  
604 Sq. ft.



Main Level  
1,526 Sq. ft.



Lower Level  
1,368 Sq. ft.



# Interior Features

2 Story Foyer with Tile Flooring

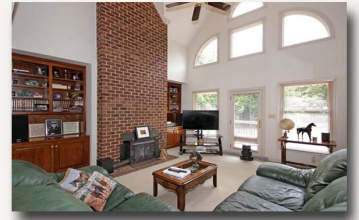
Great Room with Cathedral Ceiling,  
Fireplace with Wood Stove Insert,  
Custom Built-Ins & Access  
to Back Deck

Kitchen with Gracious Cabinetry,  
Built-In Desk, Pantry, Breakfast  
Bar & Eat-In Breakfast  
Area

Formal Dining Room with  
Chair Rail & Crown  
Molding

½ Bath with Pedestal Sink

Laundry Room with Cabinets,  
Sink & Access to Garage



# Interior Features

1st Floor Master Bedroom Suite with  
Ceiling Fan & Walk-In Closet

Master Bathroom with Dual Sink Vanity,  
Dressing Vanity, Jetted Tub &  
Separate Stand-Up Shower

Main Floor Guest Bedroom with  
Full Bath Ensuite

Upper Level with 2 Bedrooms  
& 1 Full Bathroom

Basement Rec Room with Fireplace,  
Wet Bar, Full Bathroom,  
Storage Room & Private  
Entrance

With Addition of Cabinets & Appliances  
Basement Can Be 2nd Living Area





# Exterior Features

Full Brick Exterior

Metal Roof

Full Length Wrap Around  
Front Porch

Full Length Trex Back Deck

Lower Level Covered Patio

2 Car Attached Side Load Garage

Asphalt Driveway





# Barn Features

4 Stall Metal Barn

Front Overhang

Center Aisle

Hay Loft

Water & Electricity

Opens to Paddock





# Detached Garage/Workshop

30' x 40' Building

Full Brick Exterior

2 Overhead Doors

1 Man Door

½ Bathroom

Rear Overhang for Equipment  
Storage





# Property Features



6.29 Acres, Flat



Fenced Pastures with  
Canopy of Trees  
for Shade

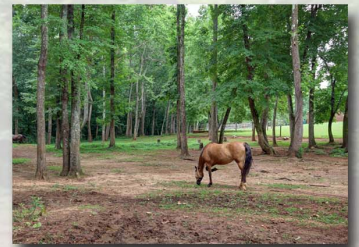
Wash Stall



Hay Building



Located at End of  
Cul-de-Sac



One Hour to Charlotte Airport

18 Minutes to Hickory

Close Proximity to Medical Centers  
& Hospitals



Within Driving Distance to Lenoir Rhyne  
University, Catawba Community  
College & Appalachian  
Center at Hickory

