



## **Bibb Co Rec / Timber Tract 59 +/- ac \$ 129,800**

**Bibb County**

Beautiful tract with substantial merchantable timber in Central Bibb County between Centerville and Montevallo. Secluded with deeded access from County Road 57 (Deer Creek Rd.). Looking for a recreational tract with potential short and/or longer term timber revenue? Give us a call to schedule a showing today

- Just south of Highway 25 between Centerville and Montevallo
- Less than an hour from Birmingham and Tuscaloosa
- Beautiful timber throughout the tract
- Very good deer and turkey hunting

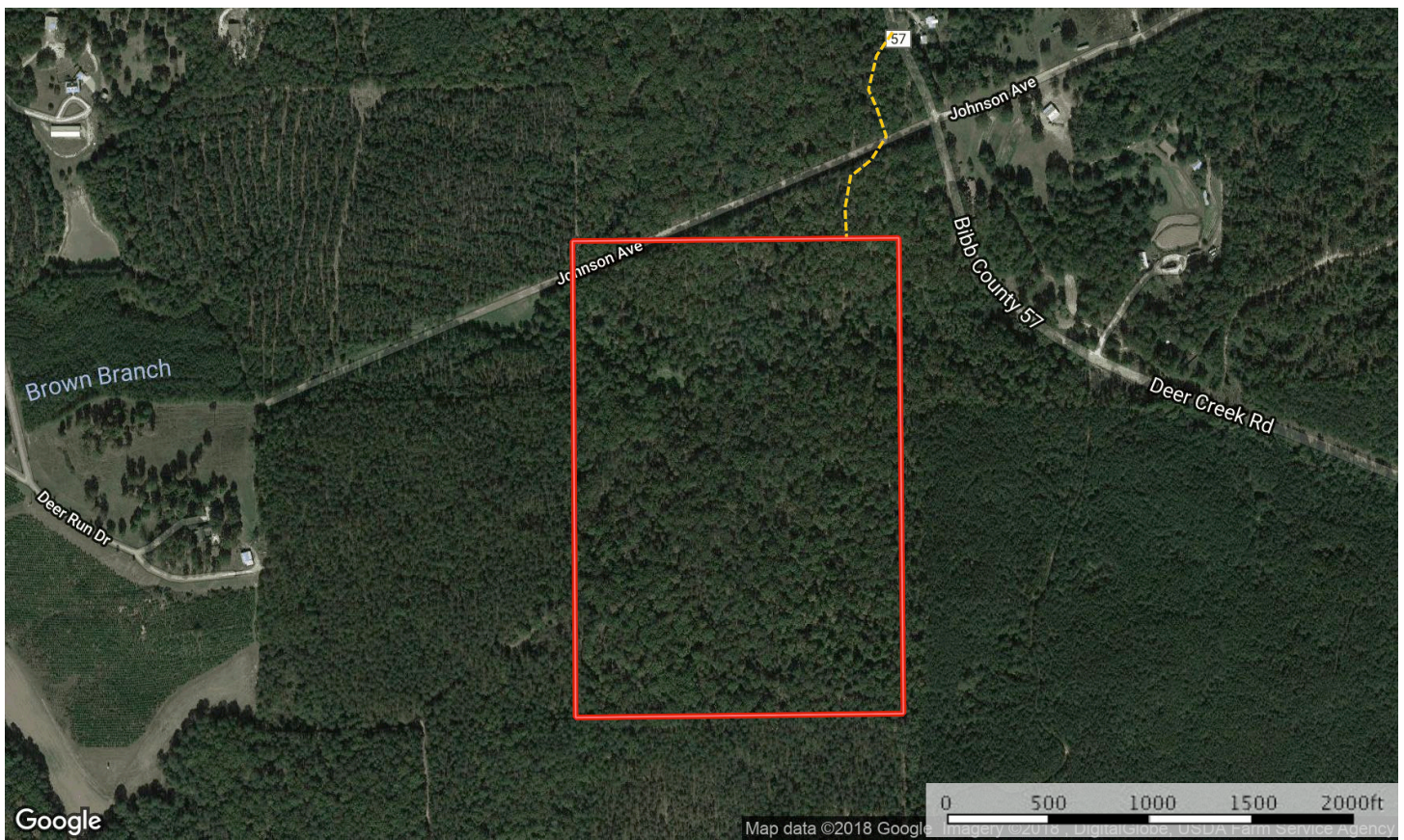
**Contact: Scott Holmes**  
 sholmes@blackridgeland.com  
 334.799.6934 (mobile)



**TEL** 205/322/2647  
**FAX** 205/322/8563  
**EML** info@blackridgeland.com

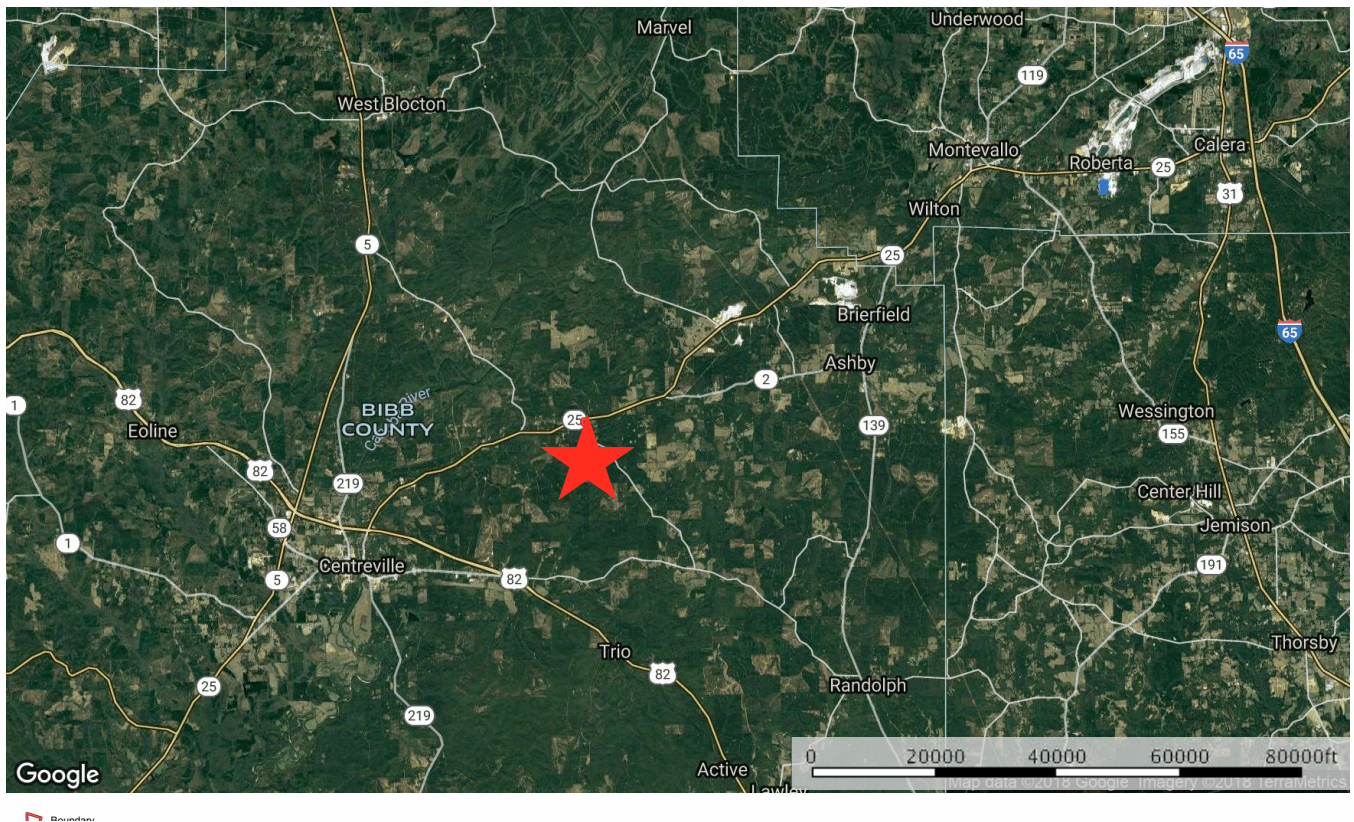
[www.BLACKRIDGELAND.com](http://www.BLACKRIDGELAND.com)





--- Deeded Access

□ Boundary



**BOUNDARIES AND ACREAGES ARE APPROXIMATE**