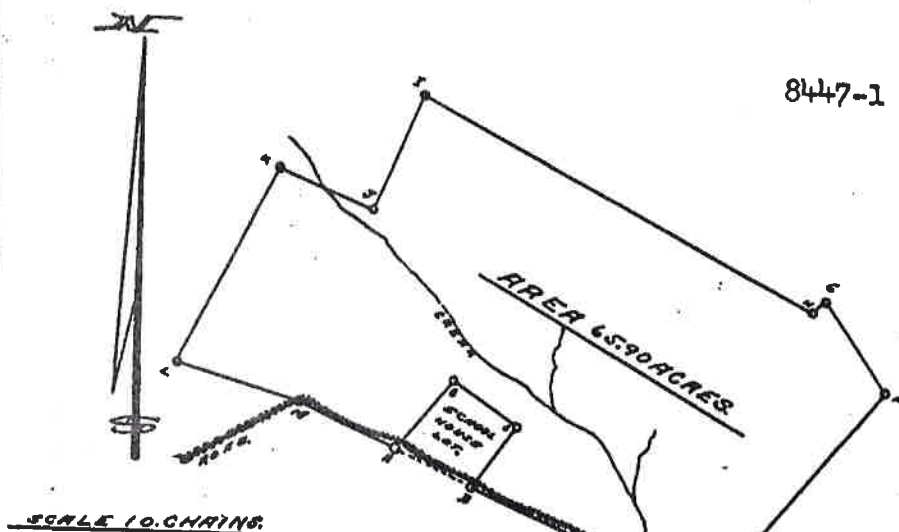


Nov. 3, 1966  
Delivered to:  
T. C. Lea, Jr.

8447-1

259



Surveyed July 26.&.27th.1948.

The above plat represents a survey of a tract of land near Scrable in Rappahannock County Virginia, which belongs to M.L. Grant, et. als. which is bounded and described as following to wit:—Beginning at A. in plat, a stake and stone pile in an old abandoned road on the south side of the present road, thence with the school house lot, and crossing the present road, North  $39^{\circ} 30'$  East 5.65 Chains, to B. in plat, a set post a corner to School House lot, thence with same, South  $57^{\circ} 30'$  East 4.33 Chains, to C. in plat, a post a corner to the School House lot, thence with same, South  $35^{\circ} 45'$  West 4.70 Chains, to D. in plat a stake and stone pile on the old road on the south side of the present road, in Tom Hoffman's line, (now \_\_\_\_\_ Dillingers line) thence with the old road in part, and the present road in part, South  $64^{\circ} 20'$  East 15.78 Chains, to E. in plat, a stake and stone pile on the south side of the Scrable and Hope Hill road, a corner to Clifford Dennis, thence with his line, North  $39^{\circ} 20'$  East 16.66 Chains, to F. in plat, a stone planted, a corner to said Dennis, in the line of Joe Payton, thence with said Peyton's line, North  $33^{\circ} 45'$  West 6.58 Chains, to G. in plat, a stake and stone pile at a sharp bend in the fence, thence with same South  $45^{\circ} 30'$  West 1.25 Chains, to H. in plat, a stake and stone pile between two marked dogwoods, a corner to said Peyton, thence et. als. North  $60^{\circ} 45'$  West 26.75 Chains, to I. in plat, a stake and stone pile a corner to \_\_\_\_\_ Dennis, on the east side of the Bessie Bell Mt. thence with same, South  $21^{\circ} 15'$  West 8.20 Chains, to J. in plat, a stake

(2)

and stone pile in a ravine, near a large solid rock, thence with same and up a creek in part, North  $68^{\circ}45'$  West 6.25 Chains to K. in plat, a stake and stone pile, by a large locust stump, in Dennis line, thence with Washington's 40-Acre lot, South  $27^{\circ}$  West 13.73 Chains, to passing over a spring by 3.94 Chains to L. in plat, a stake and stone pile by a large oak stump, in or near Daniel Deals, line thence with his line South  $74^{\circ}$  East 7.89 Chains to M. a point in the Scrable and Hope Hill road, and at the mouth of the old road, a corner to Tom Hoffman (now Dillingers) thence with his line and the old road, South  $66^{\circ}$  East 6.52 Chains, to the point of Beginning and Containing 65.90 ACRES.

VIRGINIA:

Clerk's Office of Rappahannock Circuit Court, October 10, 1966  
THIS PLAT AND SURVEY was this day received in the said office and  
admitted to record at 1:30 o'clock P.M.

Teste: Eva L. Smith Dep. Clerk