

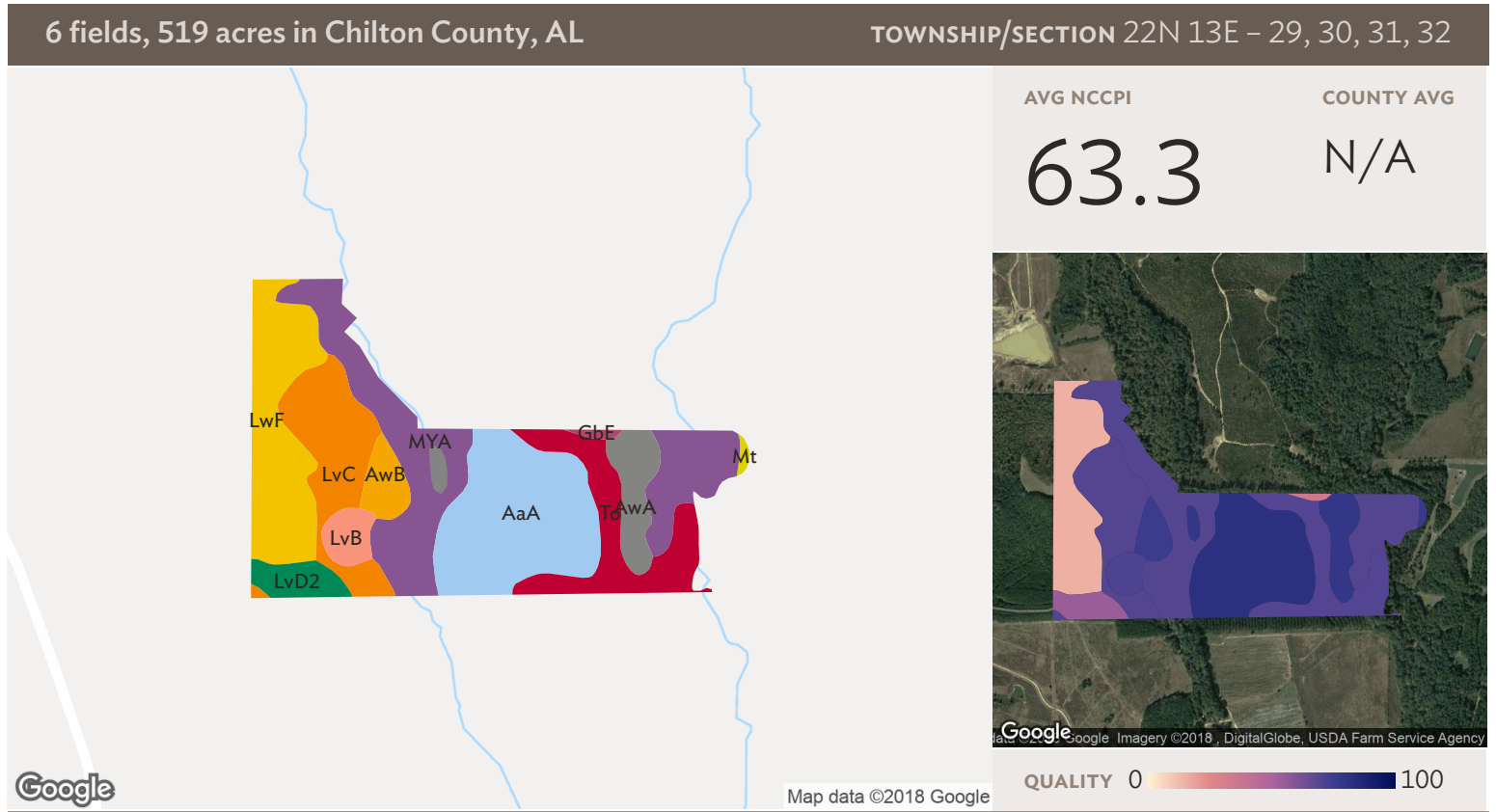
All fields

Source: NRCS Soil Survey

519 ac

SOIL CODE	SOIL DESCRIPTION	ACRES	PERCENTAGE OF FIELD	SOIL CLASS	NCCPI
■ LwF	Luverne-Boswell complex, 15 to 45 percent slopes	101.76	19.6%	7	15.1
■ MYA	Myatt-Bibb association, level	94.93	18.3%	4	69.5
■ LvC	Luverne fine sandy loam, 6 to 10 percent slopes	55.85	10.8%	3	69.5
■ AaA	Altavista fine sandy loam, 0 to 2 percent slopes	53.44	10.3%	2	81.3
■ To	Toccoa fine sandy loam	46.25	8.9%	2	69.8
■ LwD2	Luverne-Boswell complex, 10 to 15 percent slopes, eroded	41.70	8.0%	6	50.9
■ AwA	Angie-Wickham complex, 0 to 2 percent slopes	36.82	7.1%	2	78.2
■ LvD2	Luverne fine sandy loam, 10 to 15 percent slopes, eroded	27.52	5.3%	4	54.1
■ Tr	Toccoa soils, local alluvium	18.70	3.6%	2	69.8

6 fields, 519 acres in Chilton County, AL			TOWNSHIP/SECTION 22N 13E – 29, 30, 31, 32			
■	LvC2	Luverne fine sandy loam, 6 to 10 percent slopes, eroded	16.13	3.1%	3	56.5
■	LvB	Luverne fine sandy loam, 2 to 6 percent slopes	10.96	2.1%	2	70.9
■	LvB2	Luverne fine sandy loam, 2 to 6 percent slopes, eroded	9.67	1.9%	2	57.6
■	AwB	Angie-Wickham complex, 2 to 6 percent slopes	3.73	0.7%	3	75.4
■	GbE	Guin and Bowie soils, 10 to 25 percent slopes	0.69	0.1%	7	34.9
■	Mt	Myatt loam	0.34	0.1%	4	76.9
			518.50			57.8



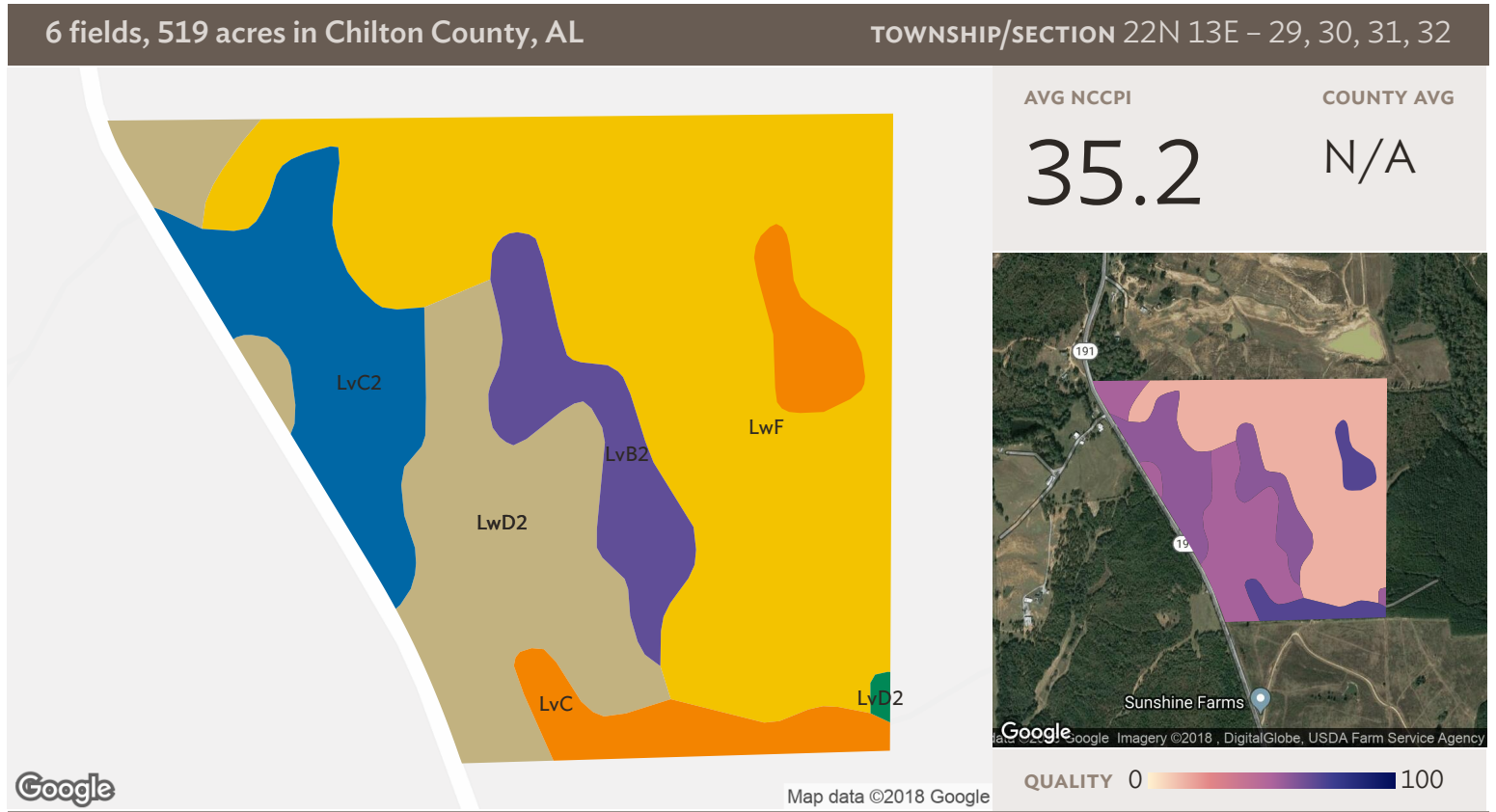
Field 1

Source: NRCS Soil Survey

126 ac

SOIL CODE	SOIL DESCRIPTION	ACRES	PERCENTAGE OF FIELD	SOIL CLASS	NCCPI
MYA	Myatt-Bibb association, level	29.81	23.6%	4	69.5
AaA	Altavista fine sandy loam, 0 to 2 percent slopes	27.84	22.1%	2	81.3
LwF	Luverne-Boswell complex, 15 to 45 percent slopes	20.78	16.5%	7	15.1
LvC	Luverne fine sandy loam, 6 to 10 percent slopes	15.64	12.4%	3	69.5
To	Toccoa fine sandy loam	12.88	10.2%	2	69.8
AwA	Angie-Wickham complex, 0 to 2 percent slopes	7.44	5.9%	2	78.2
AwB	Angie-Wickham complex, 2 to 6 percent slopes	3.73	3.0%	3	75.4
LvD2	Luverne fine sandy loam, 10 to 15 percent slopes, eroded	3.69	2.9%	4	54.1
LvB	Luverne fine sandy loam, 2 to 6 percent slopes	3.31	2.6%	2	70.9

6 fields, 519 acres in Chilton County, AL				TOWNSHIP/SECTION 22N 13E – 29, 30, 31, 32		
■	GbE	Guin and Bowie soils, 10 to 25 percent slopes	0.69	0.5%	7	34.9
■	Mt	Myatt loam	0.34	0.3%	4	76.9
			126.16	63.3		

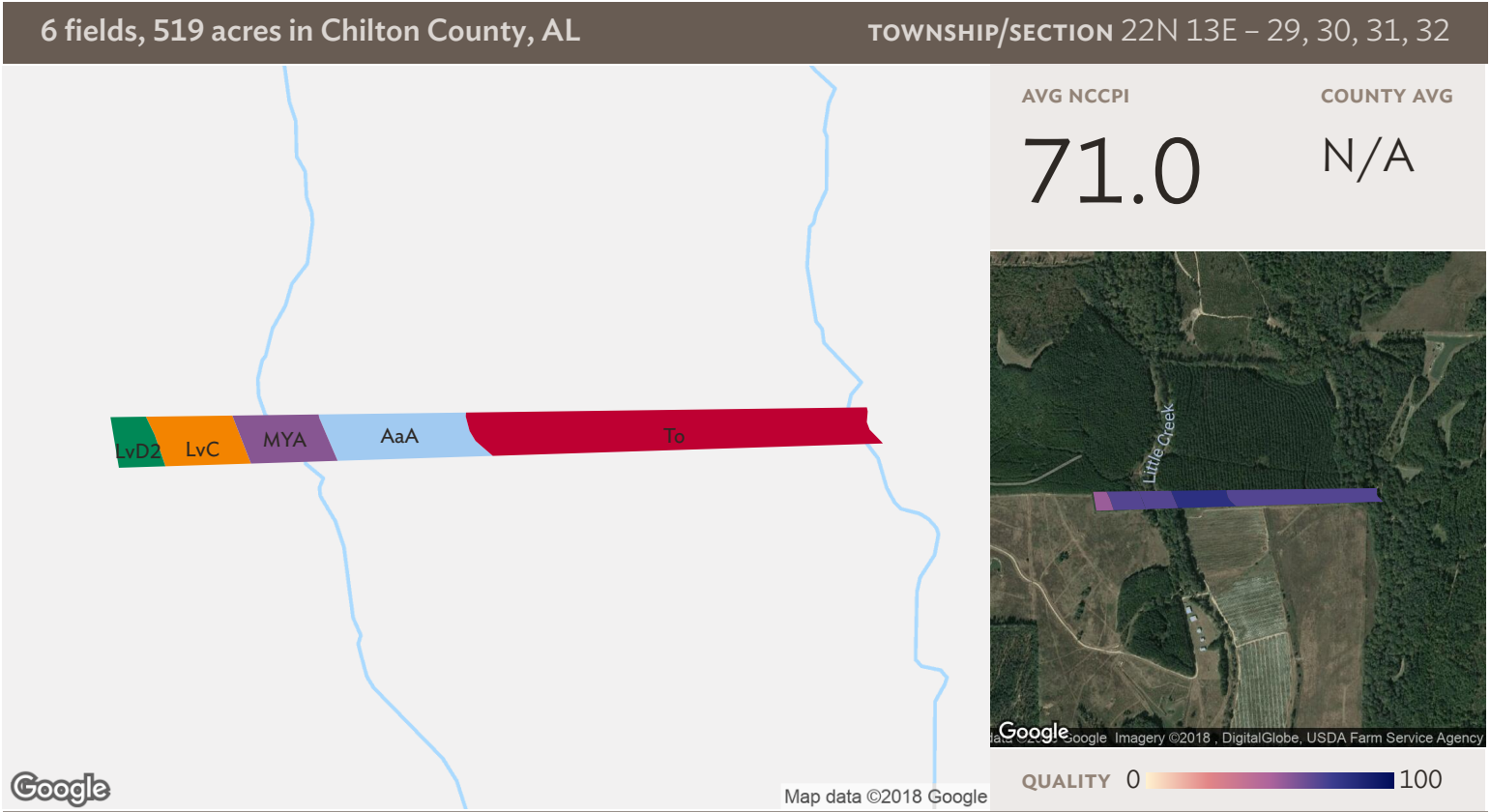


Field 2

129 ac

Source: NRCS Soil Survey

SOIL CODE	SOIL DESCRIPTION	ACRES	PERCENTAGE OF FIELD	SOIL CLASS	NCCPI
■ LwF	Luverne-Boswell complex, 15 to 45 percent slopes	65.56	51.0%	7	15.1
■ LwD2	Luverne-Boswell complex, 10 to 15 percent slopes, eroded	27.85	21.7%	6	50.9
■ LvC2	Luverne fine sandy loam, 6 to 10 percent slopes, eroded	16.13	12.5%	3	56.5
■ LvB2	Luverne fine sandy loam, 2 to 6 percent slopes, eroded	9.67	7.5%	2	57.6
■ LvC	Luverne fine sandy loam, 6 to 10 percent slopes	9.10	7.1%	3	69.5
■ LvD2	Luverne fine sandy loam, 10 to 15 percent slopes, eroded	0.30	0.2%	4	54.1
128.62					35.2



Field 3

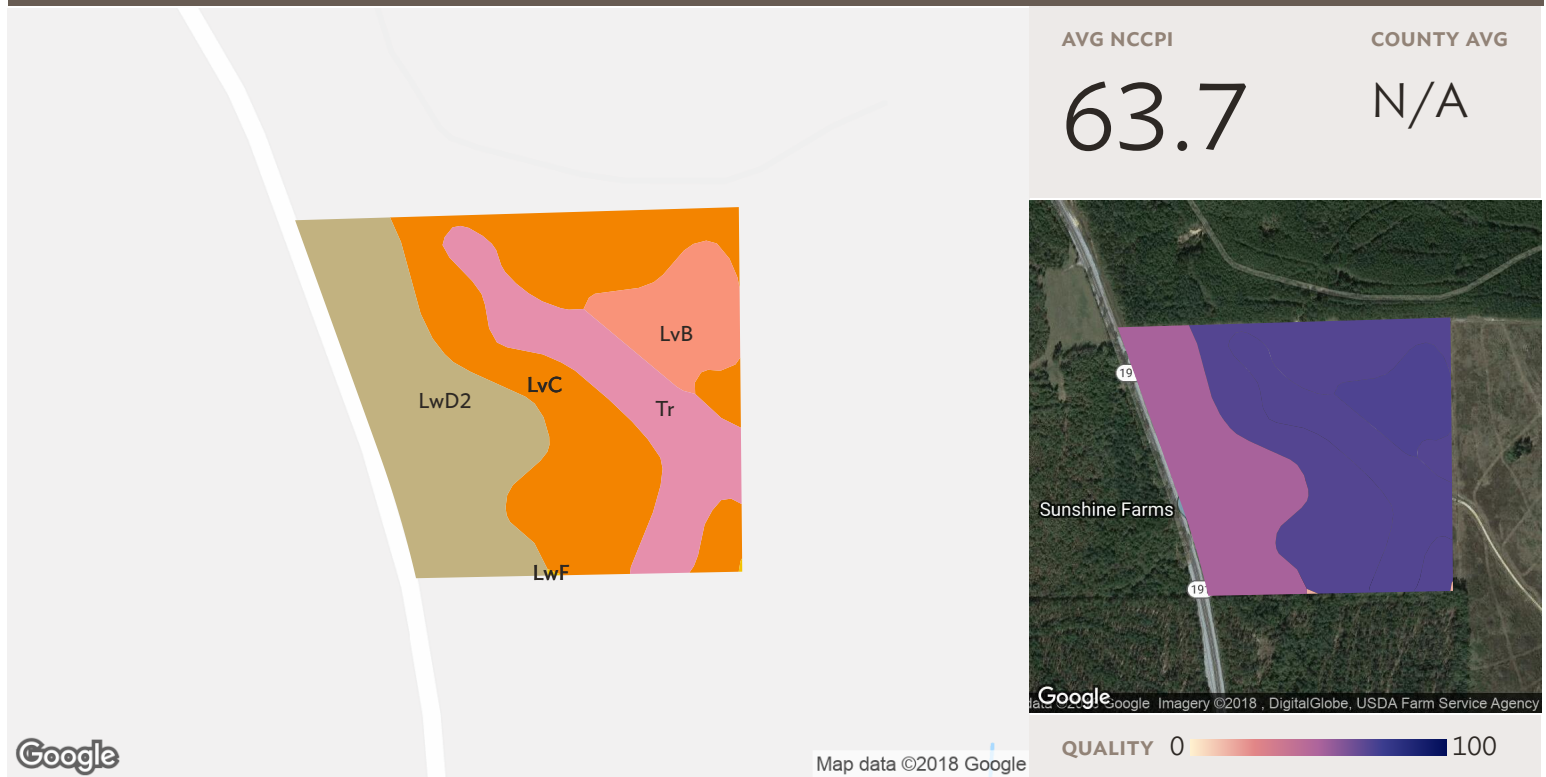
Source: NRCS Soil Survey

11 ac

SOIL CODE	SOIL DESCRIPTION	ACRES	PERCENTAGE OF FIELD	SOIL CLASS	NCCPI
To	Toccoa fine sandy loam	5.63	51.3%	2	69.8
AaA	Altavista fine sandy loam, 0 to 2 percent slopes	2.12	19.3%	2	81.3
LvC	Luverne fine sandy loam, 6 to 10 percent slopes	1.33	12.1%	3	69.5
MYA	Myatt-Bibb association, level	1.26	11.5%	4	69.5
LvD2	Luverne fine sandy loam, 10 to 15 percent slopes, eroded	0.64	5.8%	4	54.1
10.98					71.0

6 fields, 519 acres in Chilton County, AL

TOWNSHIP/SECTION 22N 13E – 29, 30, 31, 32

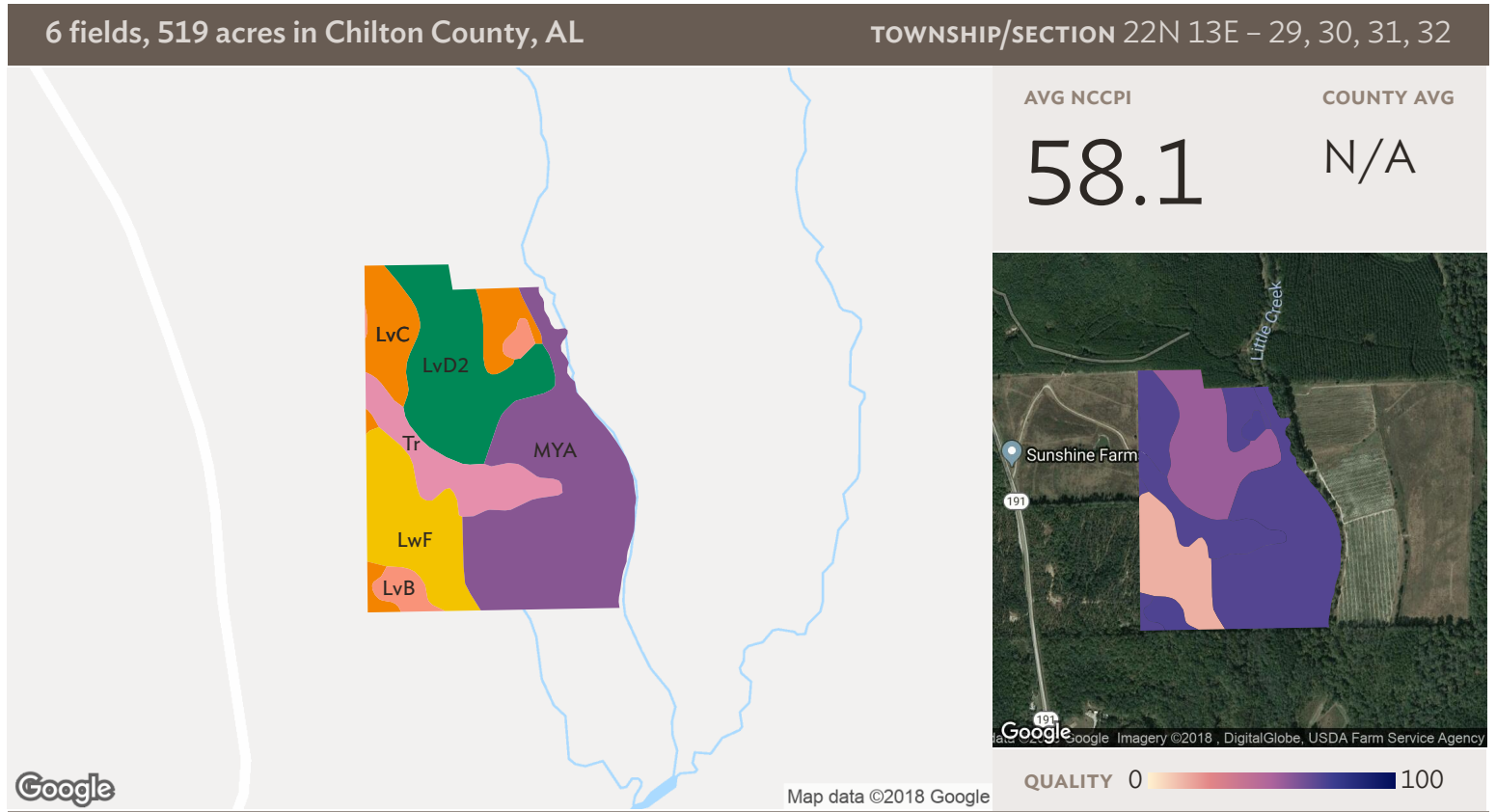


Field 4

Source: NRCS Soil Survey

43 ac

	SOIL CODE	SOIL DESCRIPTION	ACRES	PERCENTAGE OF FIELD	SOIL CLASS	NCCPI
	■ LvC	Luverne fine sandy loam, 6 to 10 percent slopes	17.06	39.6%	3	69.5
	■ LwD2	Luverne-Boswell complex, 10 to 15 percent slopes, eroded	13.85	32.1%	6	50.9
	■ Tr	Toccoa soils, local alluvium	8.04	18.7%	2	69.8
	■ LvB	Luverne fine sandy loam, 2 to 6 percent slopes	4.13	9.6%	2	70.9
			43.08			63.7

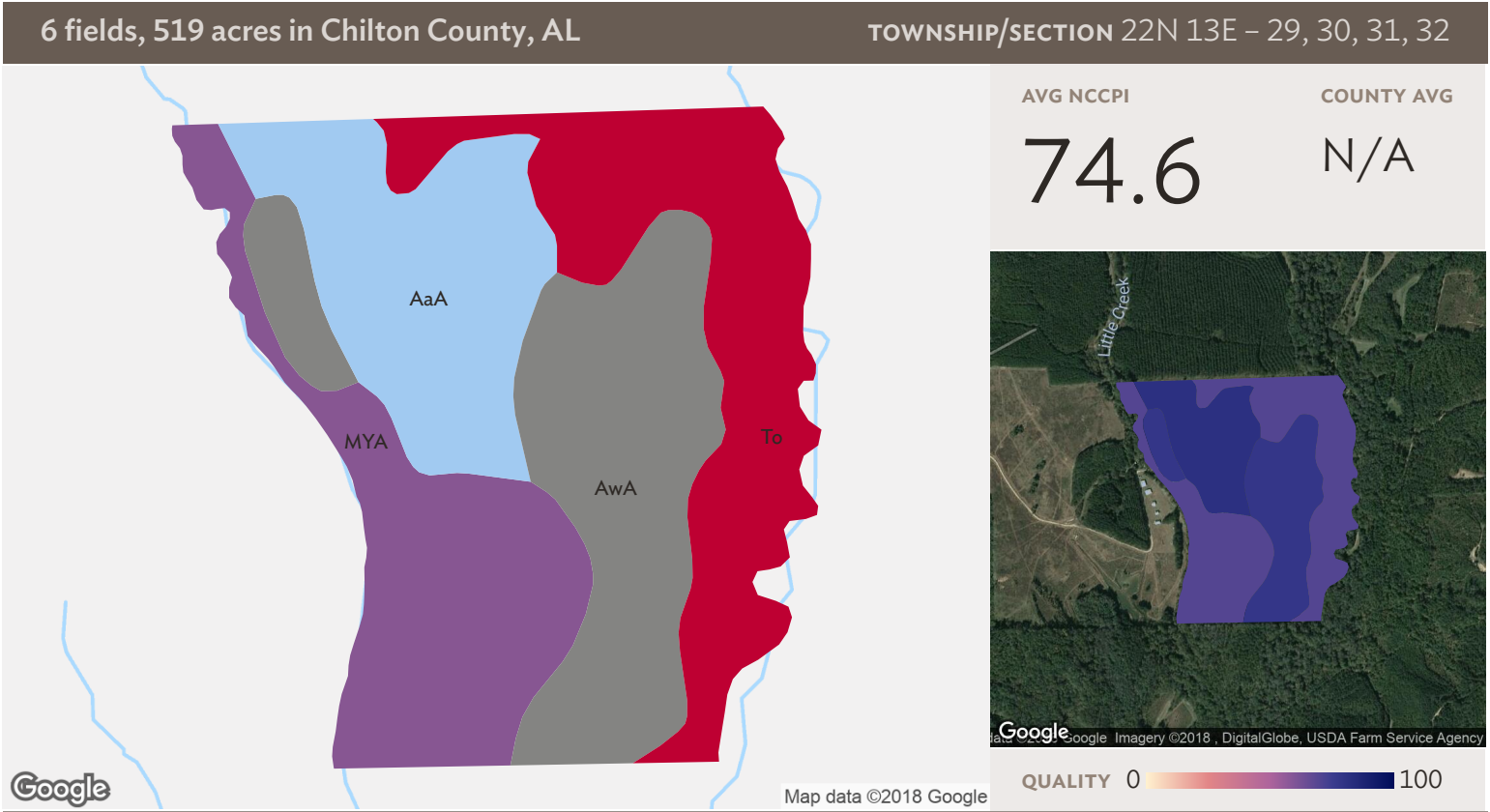


Field 5

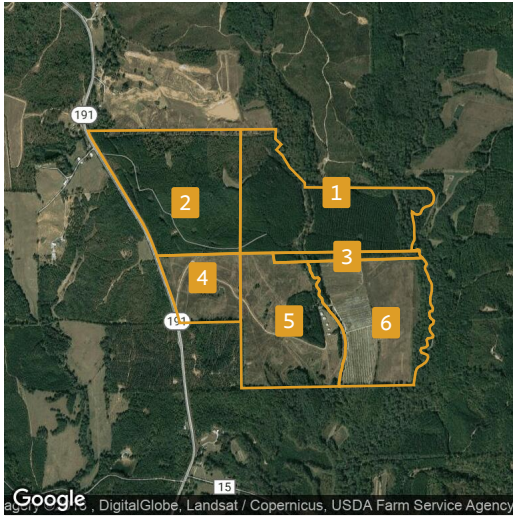
Source: NRCS Soil Survey

104 ac

SOIL CODE	SOIL DESCRIPTION	ACRES	PERCENTAGE OF FIELD	SOIL CLASS	NCCPI
MYA	Myatt-Bibb association, level	38.49	37.1%	4	69.5
LvD2	Luverne fine sandy loam, 10 to 15 percent slopes, eroded	22.89	22.1%	4	54.1
LwF	Luverne-Boswell complex, 15 to 45 percent slopes	15.43	14.9%	7	15.1
LvC	Luverne fine sandy loam, 6 to 10 percent slopes	12.71	12.3%	3	69.5
Tr	Toccoa soils, local alluvium	10.66	10.3%	2	69.8
LvB	Luverne fine sandy loam, 2 to 6 percent slopes	3.52	3.4%	2	70.9
103.70					58.1

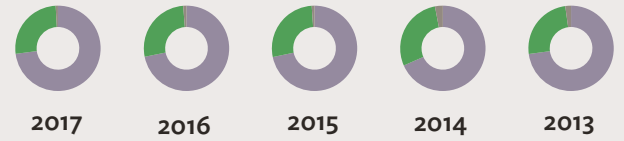


SOIL CODE	SOIL DESCRIPTION	ACRES	PERCENTAGE OF FIELD	SOIL CLASS	NCCPI
AwA	Angie-Wickham complex, 0 to 2 percent slopes	29.38	27.7%	2	78.2
To	Toccoa fine sandy loam	27.74	26.2%	2	69.8
MYA	Myatt-Bibb association, level	25.37	23.9%	4	69.5
AaA	Altavista fine sandy loam, 0 to 2 percent slopes	23.47	22.2%	2	81.3
105.97					74.6

6 fields, 519 acres in Chilton County, AL
TOWNSHIP/SECTION 22N 13E – 29, 30, 31, 32


All fields

519 ac



■ Non-Cropland

72.9% 71.8% 71.7% 68.4% 72.9%

■ Grass/Pasture

26.2% 26.9% 27.2% 28.6% 24.9%

■ Other

0.9% 1.2% 1.1% 3.0% 2.2%



Field 1

126 ac

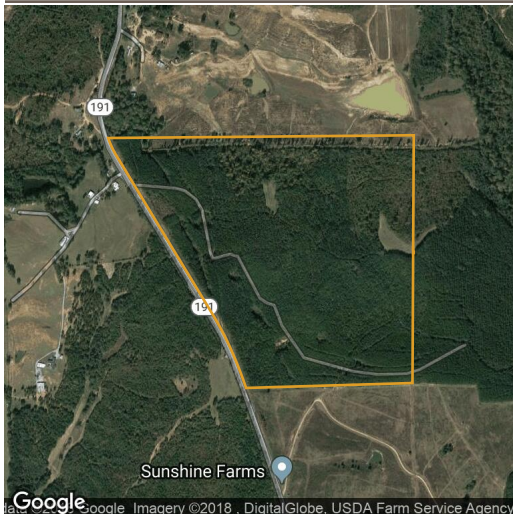


■ Non-Cropland

99.5% 99.0% 99.5% 97.1% 96.2%

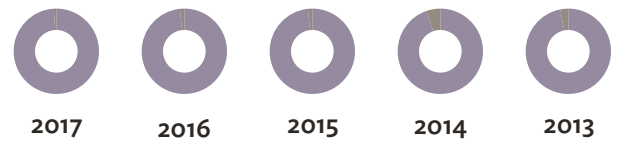
■ Other

0.5% 1.0% 0.5% 2.9% 3.8%



Field 2

129 ac



■ Non-Cropland

99.1% 98.3% 98.3% 94.7% 96.9%

■ Other

0.9% 1.7% 1.7% 5.3% 3.1%

6 fields, 519 acres in Chilton County, AL

TOWNSHIP/SECTION 22N 13E – 29, 30, 31, 32

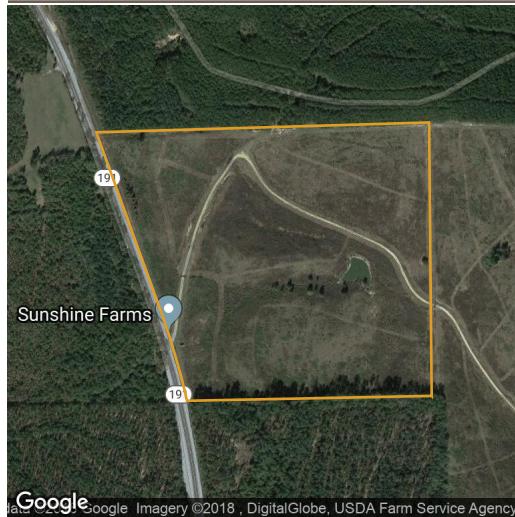


Field 3

11 ac

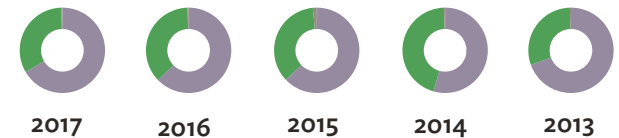


■ Non-Cropland	97.4%	100.0%	100.0%	99.3%	100.0%
■ Other	2.6%	-	-	0.7%	-

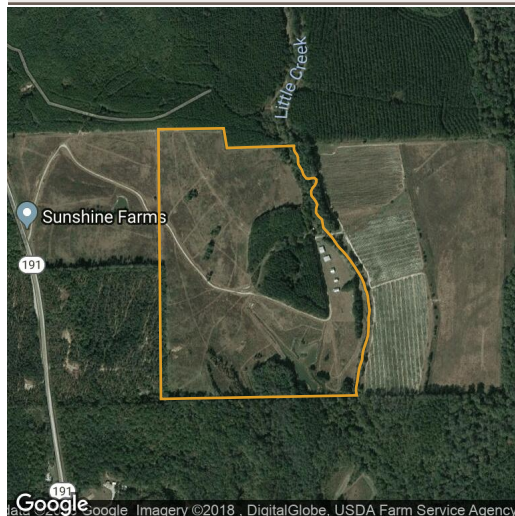


Field 4

43 ac

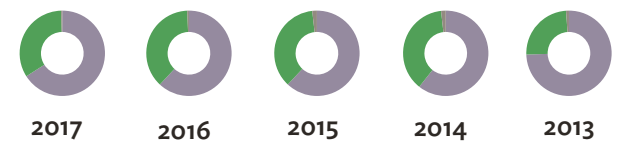


■ Non-Cropland	66.5%	62.7%	62.8%	54.4%	69.4%
■ Grass/Pasture	33.1%	36.9%	35.7%	45.2%	30.2%
■ Other	0.4%	0.4%	1.5%	0.4%	0.4%



Field 5

104 ac



■ Non-Cropland	66.0%	61.9%	62.0%	60.7%	74.5%
■ Grass/Pasture	33.6%	37.4%	36.3%	37.6%	24.4%
■ Other	0.4%	0.7%	1.8%	1.8%	1.1%

6 fields, 519 acres in Chilton County, AL

TOWNSHIP/SECTION 22N 13E – 29, 30, 31, 32



Field 6

106 ac



2017



2016



2015



2014



2013

■ Grass/Pasture	80.5%	77.7%	81.1%	76.3%	77.7%
■ Non-Cropland	16.5%	17.9%	16.6%	12.4%	12.9%
■ Crop Undetermined	0.2%	0.2%	1.5%	5.7%	3.8%
■ Other	2.8%	4.2%	0.8%	5.5%	5.5%

Source: NASS Cropland Data Layer