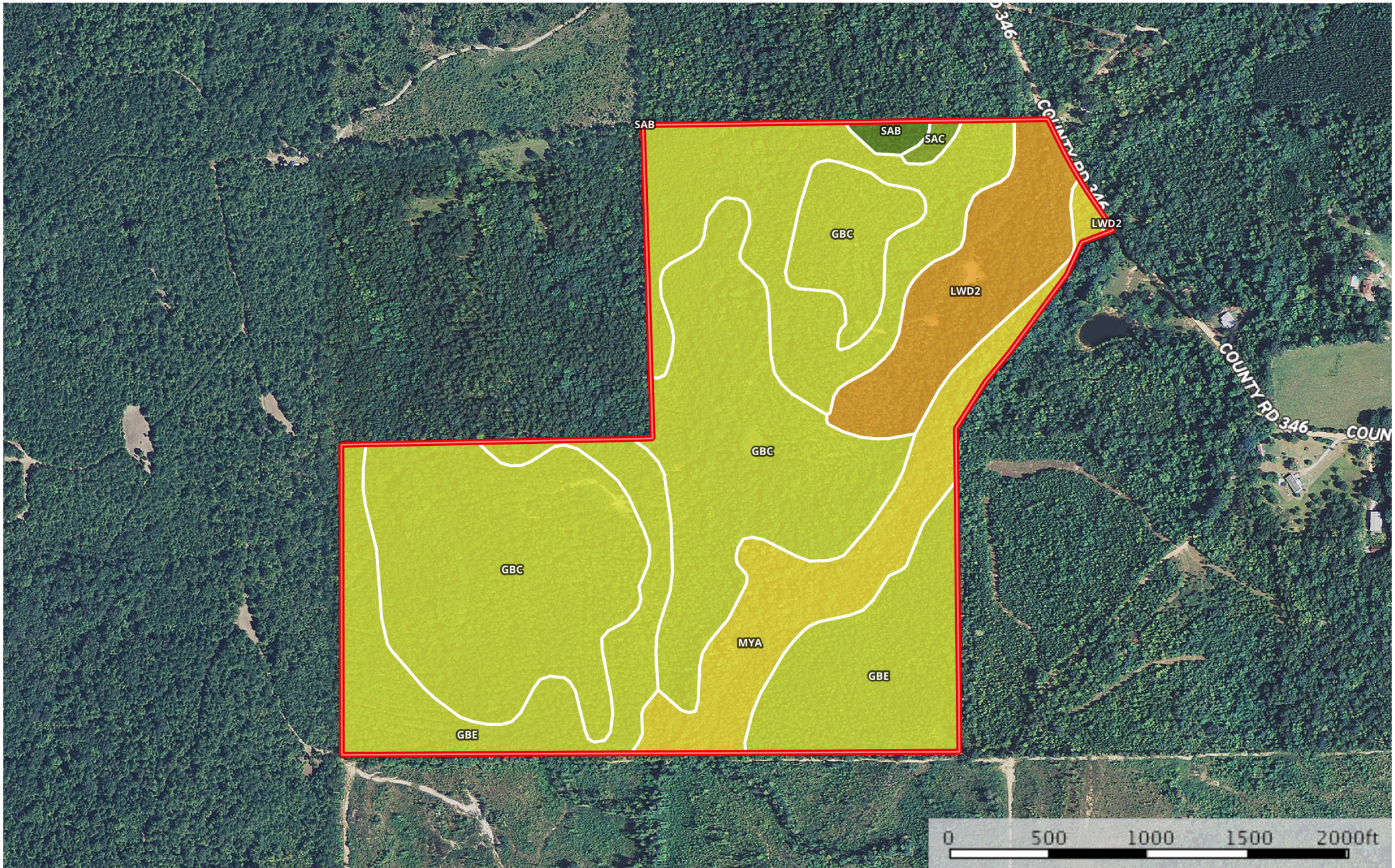



132 acres Chilton County Minor

Chilton County, Alabama, 132 AC +/-



 Boundary

Boundary 130.2 ac

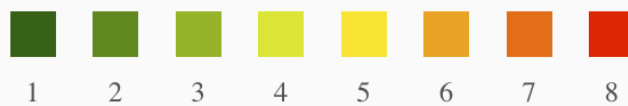
SOIL CODE	SOIL DESCRIPTION	ACRES	%	CAP
LwD2	Luverne-Boswell complex, 10 to 15 percent slopes, eroded	12.1	9.33	6e
SaC	Saffell gravelly sandy loam, 6 to 10 percent slopes	0.5	0.42	3e
GbE	Guin and Bowie soils, 10 to 25 percent slopes	46.9	36.06	4e
GbC	Guin and Bowie soils, 6 to 10 percent slopes	55.4	42.56	4s
SaB	Saffell gravelly sandy loam, 2 to 6 percent slopes	0.9	0.66	2e
MYA	Myatt-Bibb association, level	14.3	10.97	5w
TOTALS		130.2	100%	4.28

Capability Legend

Increased Limitations and Hazards

Decreased Adaptability and Freedom of Choice Users

Land, Capability Class(non-irrigated)



	1	2	3	4	5	6	7	8
'Wild Life'	•	•	•	•	•	•	•	•
Forestry	•	•	•	•	•	•	•	
Limited	•	•	•	•	•	•	•	
Moderate	•	•	•	•	•	•		
Intense	•	•	•	•	•			
Limited	•	•	•	•				
Moderate	•	•	•					
Intense	•	•						
Very Intense	•							

Grazing Cultivation

(c) climatic limitations (e) susceptibility to erosion

(s) soil limitations within the rooting zone (w) excess of water