



**Two Draws Ranch**

**312.87 Acres**

**Edwards County, TX**



Located in central Edwards County less than 15 minutes from Rocksprings

Good access, less than four miles off blacktop

Very private

Large oaks and abundant topsoil

Two dry creek beds create beautiful valleys and a great habitat for wildlife

Rolling to rolling steep terrain with heavy cover for game

Large neighbors

Electricity readily available along access road

30 mile, breathtaking views from ideal building sites

Good ranch road system on property

Well defined boundaries

Wildlife includes whitetail, turkey, hogs, axis, aoudad and elk

Very minimal hunting pressure in the last 50 years

Ag exempt taxes

Additional acreage available

\$624,175

Listing #302

**Western Hill Country Realty**

[www.westernhillcountryrealty.com](http://www.westernhillcountryrealty.com)

[info@westernhillcountryrealty.com](mailto:info@westernhillcountryrealty.com)

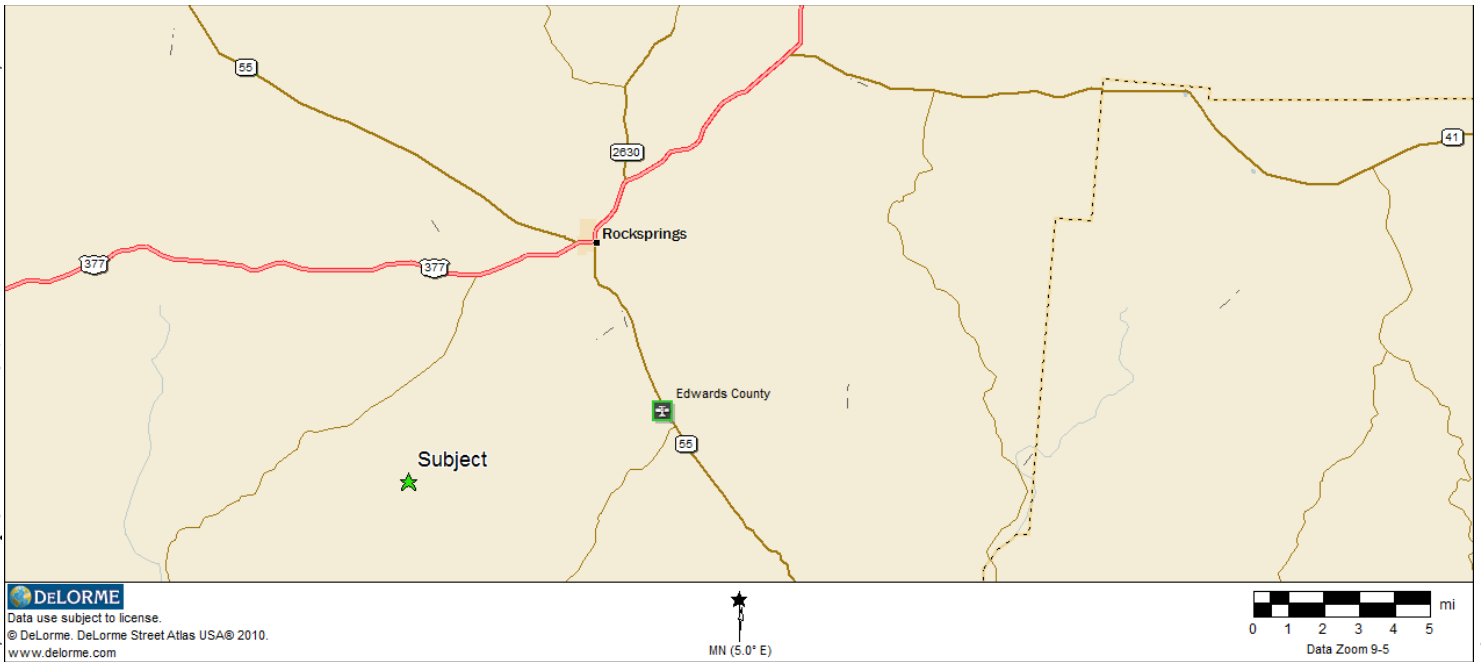
**830-683-4435**



**Two Draws Ranch**

**312.87 Acres**

**Edwards County, TX**



**Western Hill Country Realty**

[www.westernhillcountryrealty.com](http://www.westernhillcountryrealty.com)

[info@westernhillcountryrealty.com](mailto:info@westernhillcountryrealty.com)

**830-683-4435**





**Two Draws Ranch**

**312.87 Acres**

**Edwards County, TX**



**Western Hill Country Realty**

[www.westernhillcountryrealty.com](http://www.westernhillcountryrealty.com)

[info@westernhillcountryrealty.com](mailto:info@westernhillcountryrealty.com)

**830-683-4435**





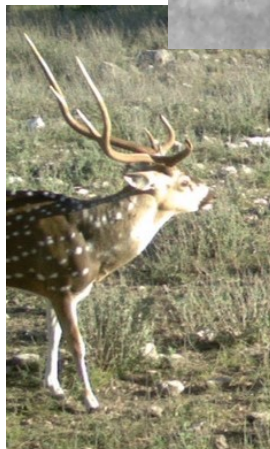
**Two Draws Ranch**

**312.87 Acres**

**Edwards County, TX**



\*game pictures were taken on entire 1300 acres that is for sale\*



**Western Hill Country Realty**

[www.westernhillcountryrealty.com](http://www.westernhillcountryrealty.com)

[info@westernhillcountryrealty.com](mailto:info@westernhillcountryrealty.com)

**830-683-4435**