

# Farm for Sale

Busey Farm Brokerage



## Farm for Sale

### Mynard Farm—Macon County 129.17 Acres in Mt. Zion Township

#### Location

This farm is located East of Mt. Zion, IL on Sefton Road and East of 85th Street.

#### Legal Description (abbreviated)

The West Part of the Northwest Quarter (NW 1/4) w/ 5.75 acres excepted in the SW corner, All in Section 7, Township Fifteen North (T15N), Range Four East (R4E) of the Third Principal Meridian (3PM), Macon County, Illinois

#### Listing Price

129.17 acres x \$10,500/acre  
\$1,356,285.00 in Total

#### Lease/Possession

Lease is open for 2019

#### Contact Information



**Tom Courson, Listing Broker 217-425-8291**  
Dean Kyburz, Broker 217-425-8290  
Corey Zelhart, Broker 217-425-4245  
Nick Suess, Broker 217-425-8296  
Steve Myers, Managing Broker 309-962-2311

[busey.com](http://busey.com)

259 E. South Park—Decatur, IL 62523  
Phone: 217-425-8340—Fax 217-362-2724

#### County FSA Data

Farm #	1280	Tract #	924
Total Acres:	129.17	Cropland Acres:	121.83
Corn Base Acres:		Soybean Base Acres:	
Farm Program:		ARC-County	

#### Price Loss Coverage (PLC) Yields

Corn Yield:	156	Soybean Yield:	48
-------------	-----	----------------	----

#### Real Estate Tax Information

Parcel ID #	Acres	2016 Assessed Value	2016 Taxes Payable 2017
12-18-07-100-002	129.17	67,046	\$4,828.12

#### Soil Test Results

pH:            P:            K:            Organic:

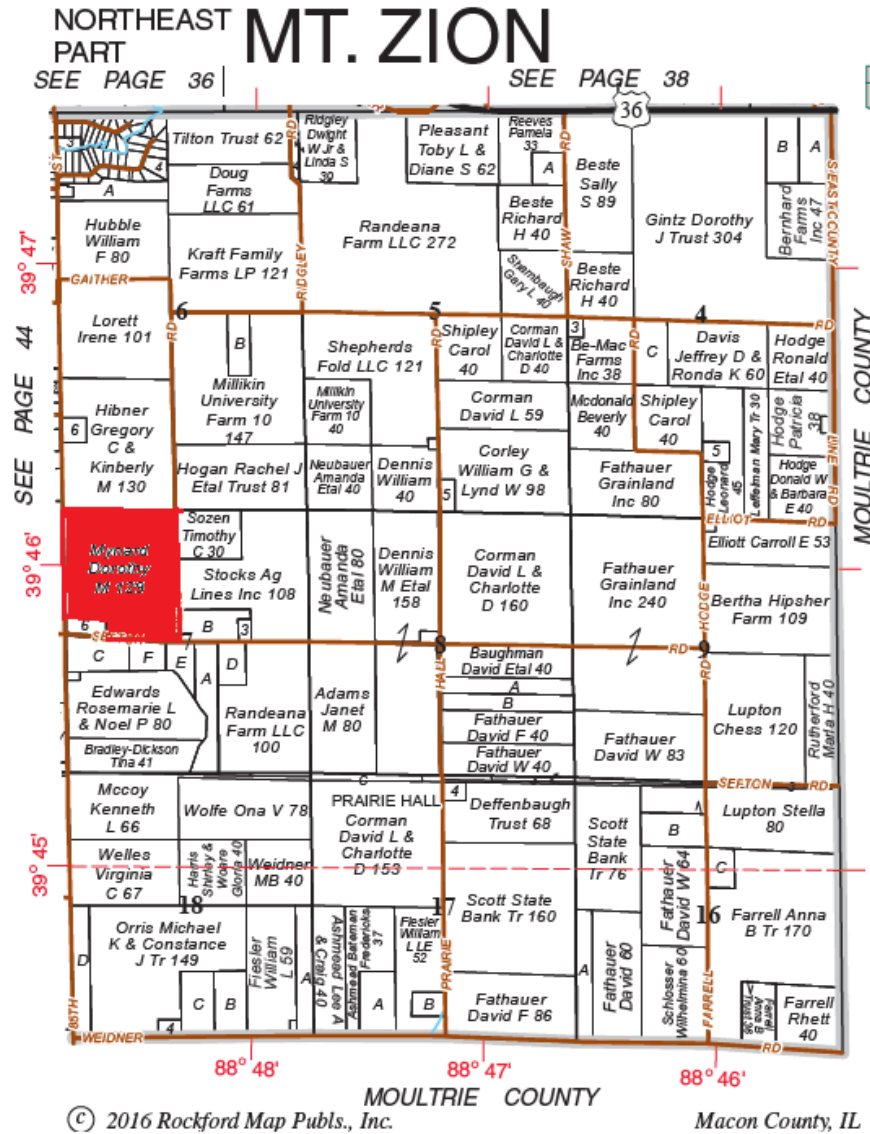
#### Yield Results

Year	Corn Yield	Soybean Yield
2017	243	68
2016	211	74
2015	211	75
2014	232	69

**Disclaimer:** The information contained in this brochure is considered accurate. It is subject to verification and no liability for errors or omissions is assumed. There are no warranties, expressed or implied, as to the information herein contained, and it is recommended that an independent inspection of the property be made by all buyers.  
**Agency:** Busey Farm Brokerage, a division of Busey Bank, its agents and representatives, are agents of the Seller

# Farm for Sale

Plat Map



Reprinted with permission of Rockford Map Publishers, Inc.



Licensed Real Estate Broker Corporation

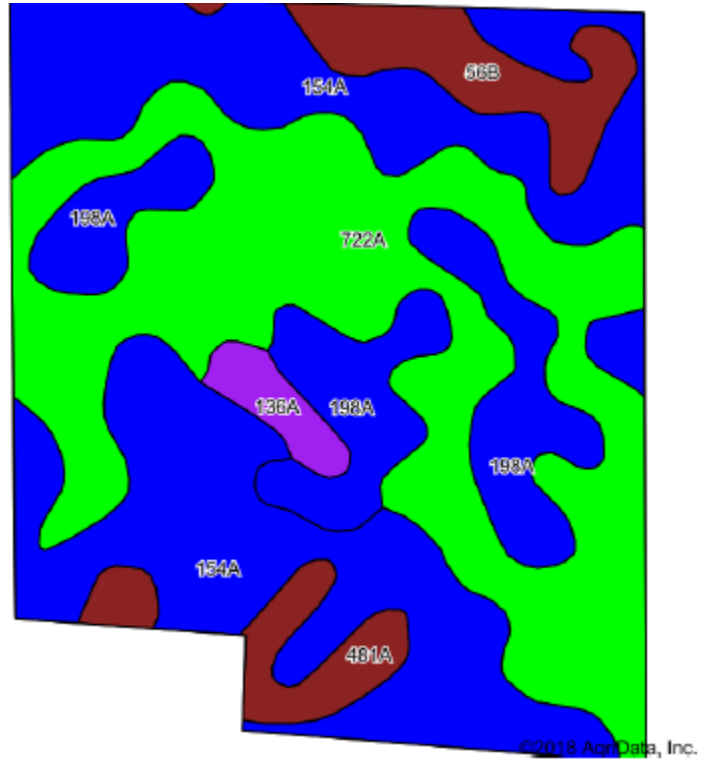
**Tom Courson, Listing Broker**  
**Dean Kyburz, Broker**  
**Corey Zelhart, Broker**  
**Nick Suess, Broker**  
**Steve Myers, Managing Broker**

**Phone 217-425-8291**  
**Phone 217-425-8290**  
**Phone 217-425-8245**  
**Phone 217-425-8296**  
**Phone 309-962-2311**

**Disclaimer:** The information contained in this brochure is considered accurate. It is subject to verification and no liability for errors or omissions is assumed. There are no warranties, expressed or implied, as to the information herein contained, and it is recommended that an independent inspection of the property be made by all buyers.  
**Agency:** Busey Farm Brokerage, a division of Busey Bank, its agents and representatives, are agents of the Seller

# Farm for Sale

## Aerial Map and Soil Information



Area Symbol: IL115, Soil Area Version: 14

Code	Soil Description	Acres	Percent of field	Il. State Productivity Index Legend	Com Bu/A	Soybeans Bu/A	Crop productivity index for optimum management
154A	Flanagan silt loam, 0 to 2 percent slopes	45.47	37.3%		194	63	144
722A	Drummer-Milford silty clay loams, 0 to 2 percent slopes	45.00	36.9%		184	60	137
198A	Elburn silt loam, 0 to 2 percent slopes	17.12	14.1%		197	61	143
**56B	Dana silt loam, 2 to 5 percent slopes	7.02	5.8%		**178	**55	**130
481A	Raub silt loam, non-densic substratum, 0 to 2 percent slopes	4.91	4.0%		183	58	134
136A	Brooklyn silt loam, 0 to 2 percent slopes	2.31	1.9%		152	49	112
<b>Weighted Average</b>					<b>188.6</b>	<b>60.7</b>	<b>139.5</b>



Licensed Real Estate Broker Corporation

**Tom Courson, Listing Broker**  
**Dean Kyburz, Broker**  
**Corey Zelhart, Broker**  
**Nick Suess, Broker**  
**Steve Myers, Managing Broker**

**Phone 217-425-8291**  
**Phone 217-425-8290**  
**Phone 217-425-8245**  
**Phone 217-425-8296**  
**Phone 309-962-2311**

**Disclaimer:** The information contained in this brochure is considered accurate. It is subject to verification and no liability for errors or omissions is assumed. There are no warranties, expressed or implied, as to the information herein contained, and it is recommended that an independent inspection of the property be made by all buyers.  
**Agency:** Busey Farm Brokerage, a division of Busey Bank, its agents and representatives, are agents of the Seller