



1086 Bethel Road  
Morganton, NC 28655

4 Bedrooms ♦ 3½ Bathrooms ♦ Finished Basement  
Barn ♦ Arena ♦ Gated Entrance ♦ 3.21 Acres



Jo Zarnoch  
704-400-1701

horseloverjoz@breedlovecarolinas.com  
www.breedlovefarmsestatesandland.com





**1086 Bethel Road**  
**Morganton, NC 28655**

**You could be minutes from all of this: Downtown festivals, gallery crawls, multiple parks, recreation centers, hospitals, artsy atmospheres and, *best of all*, South Mountain State Park with its 80' waterfall and 40 miles of hiking & equestrian trails! You must see this 3.21 acre horse-farm and home, which also offers the potential for secondary living quarters in the lower level.**

**Rarely do you find the combination of a gated concrete private drive with a separate road to the barn, 4-board with no climb fencing, and a deck to watch the sunset or your horses/pets cavorting in the fenced pasture. The barn has storage room, tack room, 4 stalls, center aisle, water, steel trusses, sliding doors, and windows in each stall. Beyond the barn is an arena (not used by current owners). The fencing by the barn is 6-strand coated wire.**

**The home? A book could be written. Let's start with the architectural angles and a kitchen with color-changing rope lights! A bay window in the kitchen overlooks the lush back yard edged by trees. Cabinets are all solid & deep-grained with a pantry and pull-outs for pots. Enjoy Bose surround-sound in the great room, kitchen, and on the deck. The main level is all hardwood, with ceiling fans in every room, and French Doors out to the deck. In the master suite, you can look out at nature while relaxing in the jetted tub; master also offers a tray ceiling and walk in closet. The second bedroom has all the ingredients for a second master bedroom on the same level. A third bedroom is used as an office, and a bonus room has its own staircase and would make an ideal person cave.**

**Walk to the lower level on extra wide stairs and be amazed upon entering; windows galore, with durable, waterproof Karndean/ flooring. There is a full bath and huge closet in the bedroom area. This bedroom is also plumbed to become a kitchen, should a secondary living quarters be desired. A massive great room with work out and storage area could easily be partitioned into a living room and secondary bedroom. Walk out of the daylight basement to a sealed concrete patio, rolled and colored, with a stone firepit that matches the stone on home as your centerpiece.**

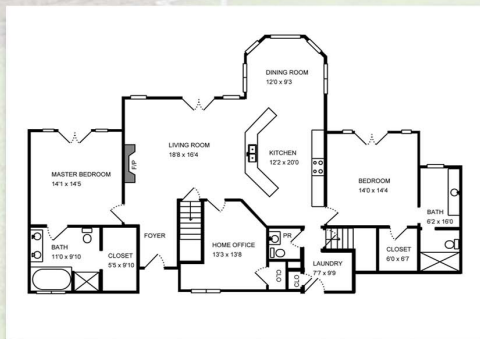


# Aerial View

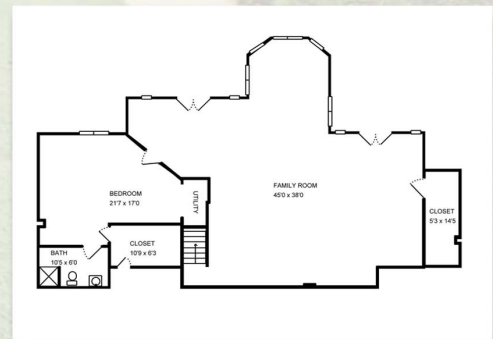


PID # 4194 ♦ 3.21 Acres

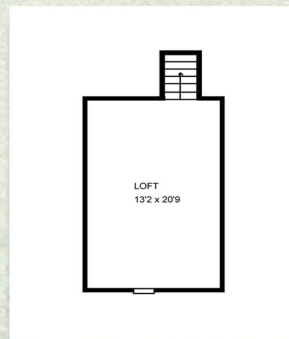
## Floor Plan 3,571 Sq.ft.



Main Level ♦ 1,692 Sq.ft.



Lower Level ♦ 1,612 Sq.ft.



Bonus Room ♦ 267 Sq.ft.





# Interior Features

Gleaming Hardwoods Throughout  
Main Level



Angled Walls for Architectural "Wow"

Great Room with Vaulted Ceiling,  
Gas Logs Fireplace & French Door  
Access to Balcony with Half  
Moon Window Above



Kitchen with Generous Oak Cabinetry,  
Diagonal Island, Stainless Steel  
Appliances, Pantry with Pull-Out  
Shelving, Under Cabinet Lighting  
& Rope Lighting that  
Changes Color



Dining Area with Angled Windows that  
Overlook the Pasture



Powder Room with Pedestal Sink



Laundry Room with Cabinetry

Ceiling Fans in Every Room

Wired for Surround Sound in Great Room,  
Kitchen, Balcony & Patio Area

# Interior Features

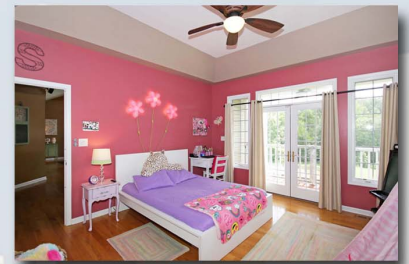
Master Bedroom with Trey Ceiling,  
French Door Access to Balcony  
& Walk-In Closet with  
Shelving



Master Bathroom with Dual Sink  
Vanity, Jacuzzi Tub, Separate  
Stand-Up Shower  
& Wired for TV



Second Master Bedroom with Trey  
Ceiling, Walk-In Closet with  
Shelving & French Door  
Access to Balcony



Guest Bathroom with Shower/Tub  
Combo



Bedroom 3/Office with Spacious  
Closet



Bonus Room with Carpeting







# Interior Features

Finished Walk-Out Basement



Could be Second Living Quarters

Wider than Average Wood  
Stairs to Lower Level



All Karndean Flooring Which is  
Indestructible, Loose Lay,  
Waterproof & Bendable



Huge Open Area Currently Used  
as Rec Room can Easily Become  
Family Room, Bedroom  
& Dining Area



Bedroom 4 with Walk-In Closet Is  
Also Plumbed to be a Kitchen for  
Second Living Quarters

Full Bathroom with Stand-Up Shower



Wood Burning Stove

Windows Across Entire Rear of  
Lower Level



# Exterior Features

Vinyl Siding & Stone Exterior

Rocking Chair Front Porch with  
Ceiling Fan

Rear Balcony off Main Master Bedroom  
with Two Ceiling Fans

Rear Balcony Off Second Master Bedroom  
with One Ceiling Fan

Two Lower Level Patios

2 Car Side Load Garage with Built-In  
Workbenches, Shelving, Closet  
& Three Windows for Air Flow

Wright Way Pest Control Every 3 Months  
Transferable to New Owner







# Barn Features



4 Stall Barn  
3 Stalls with Mats  
1 Stall Without



Concrete Center Aisle

Sliding Stall Doors



Windows in Each Stall

Water & Electricity



Storage Room

Tack Room

Side Overhang for Equipment Storage



Sliding End Doors that Lock

Steel Trusses for Support



Can Have Hay Loft





# Property Features

3.21 Acres



Park Like Setting



Cement Driveway with Gated Entrance



Second Gravel Driveway to Barn



Front Retaining Wall



Raised Garden Beds



Fire Pit with Matching Stone  
to the House



4 Board Fencing with No Climb,  
6 Strand Coated Wire  
Near Barn



Frost Free Spigot in Pasture



Arena

