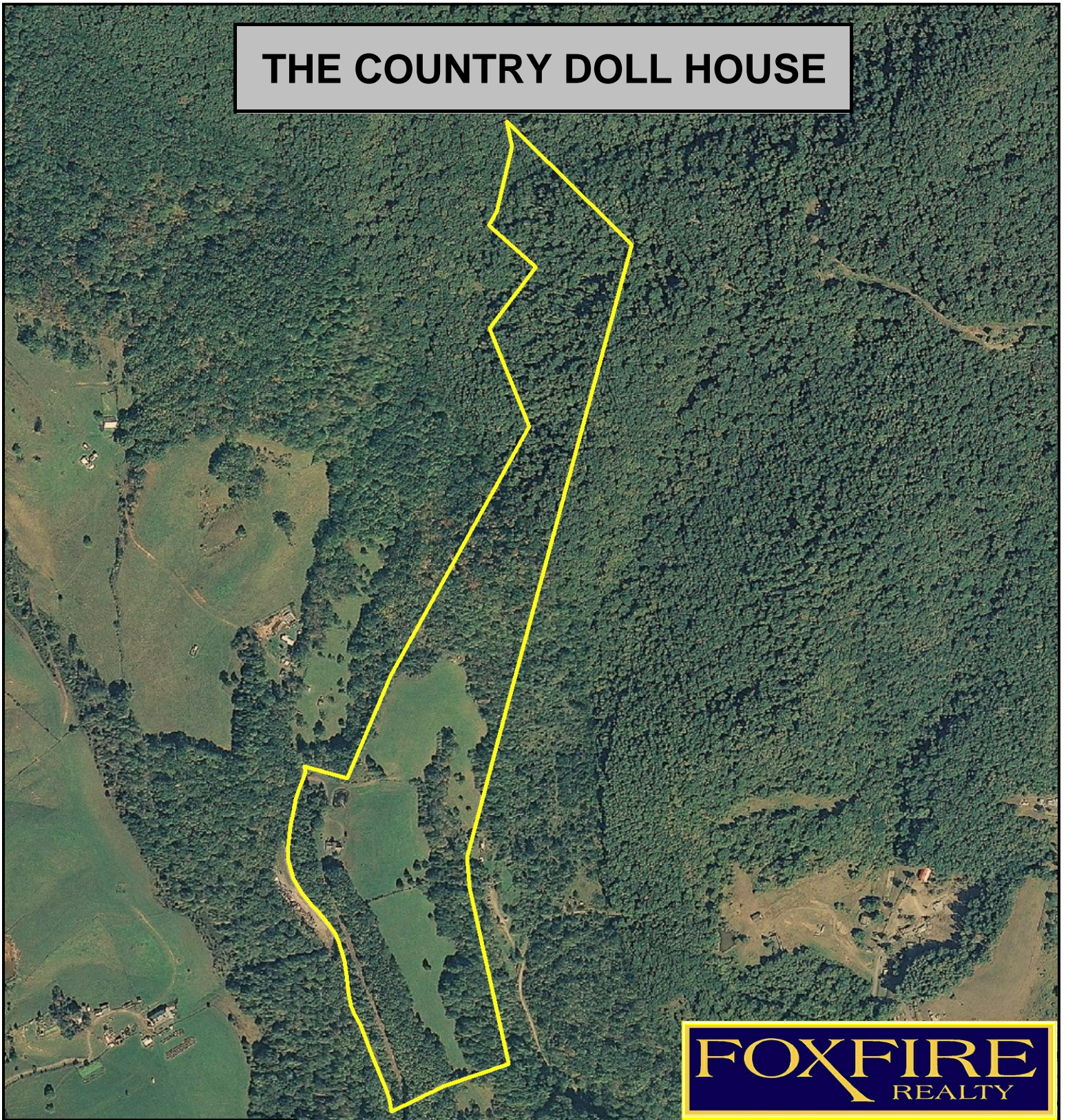
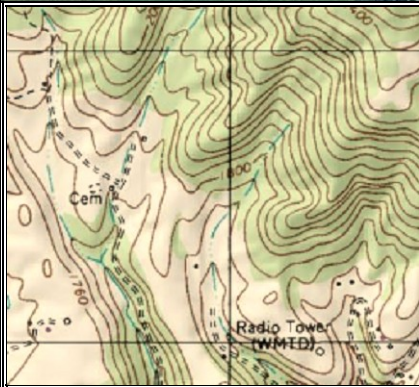


THE COUNTRY DOLL HOUSE



FOXFIRE
REALTY



THE COUNTRY DOLL HOUSE, Summers County, WV (aerial map)
Elevation Range: 1626' - 2115' +/-; Google Coordinates:
LAT 37.681828 (N), LON -80.912795 (W)
This map is for general location purposes only. Consult a licensed land
surveyor for actual boundary location and acreage.

Scale: 1 inch = 600 feet

RICHARD GRIST, Broker - Auctioneer - Forester
304.646.8837 Richard@Foxfirenation.com
WWW.FOXFIRENATION.COM

SCALE 1:7200

