



**5900 N County Rd 1142**

**20± Acres**

**Midland County | Midland, TX 79705**



**Presented By:**

**Caleb Matott, Broker/Owner**

**[RanchSpecialist@CMRanchRealEstate.com](mailto:RanchSpecialist@CMRanchRealEstate.com) | 432-349-3330**



# Rural Property, Recreational and/or Commercial - 20± Acres Midland County | Midland, TX



Presented By:  
**Caleb Matott, Broker/Owner**  
432-349-3330  
[BigDogRanchSales@mac.com](mailto:BigDogRanchSales@mac.com)

## CM Ranch Real Estate

6800 W. County Rd. 48 | Midland, TX 79707 | 432-219-2220 | [RanchSpecialist@CMRanchRealEstate.com](mailto:RanchSpecialist@CMRanchRealEstate.com)  
[www.CMRanchRealEstate.com](http://www.CMRanchRealEstate.com)





# 5900 N County Rd 1142 Midland, TX - 20± Acres

## \$695,000.00



### Property Details:

Approximate Building Sq. Ft.

Lot Size:

Current Zoning:

County:

50'x90' Shop

20± Acres

Commercial/Residential

Midland

### Property Overview:

Only minutes from Downtown, you will find an exceptional 20-acre property, just Northeast of Midland off of CR 1150. This type of property is a very rare find. The acreage is completely fenced and highly improved with a fully equipped lit arena, bucking, and roping chutes as well as a set of pens and stalls.

Separate of the enjoyable livestock facilities is a 50x90-insulated shop with overhead doors. The detached shop is enclosed with pipe fencing dividing it from the rest of the property with its own private entrance. There are 2 water wells located on the 20-acre tract of land, both generating approximately 25 GPMs, per owner.

This is a wonderful property with easy access to Midland and is perfect for recreational and/or business needs. Contact Broker, Caleb Matott, to schedule an appointment and/or to answer any and all questions.

**[Property Website](#)**

**[Property Video](#)**



Presented By:  
**Caleb Matott, Broker/Owner**  
432-349-3330  
[BigDogRanchSales@mac.com](mailto:BigDogRanchSales@mac.com)

## CM Ranch Real Estate

6800 W. County Rd. 48 | Midland, TX 79707 | 432-219-2220 | [RanchSpecialist@CMRanchRealEstate.com](mailto:RanchSpecialist@CMRanchRealEstate.com)

**[www.CMRanchRealEstate.com](http://www.CMRanchRealEstate.com)**





# Midland County | Midland, TX - 20± Acres

## \$695,000.00



Presented By:  
**Caleb Matott, Broker/Owner**  
432-349-3330  
[BigDogRanchSales@mac.com](mailto:BigDogRanchSales@mac.com)

## CM Ranch Real Estate

6800 W. County Rd. 48 | Midland, TX 79707 | 432-219-2220 | [RanchSpecialist@CMRanchRealEstate.com](mailto:RanchSpecialist@CMRanchRealEstate.com)

[www.CMRanchRealEstate.com](http://www.CMRanchRealEstate.com)





# Midland County | Midland, TX - 20± Acres

## \$695,000.00



Copyright © 2018 CM Ranch Real Estate. All Rights Reserved.

Presented By:  
**Caleb Matott, Broker/Owner**  
432-349-3330  
[BigDogRanchSales@mac.com](mailto:BigDogRanchSales@mac.com)

## CM Ranch Real Estate

6800 W. County Rd. 48 | Midland, TX 79707 | 432-219-2220 | [RanchSpecialist@CMRanchRealEstate.com](mailto:RanchSpecialist@CMRanchRealEstate.com)

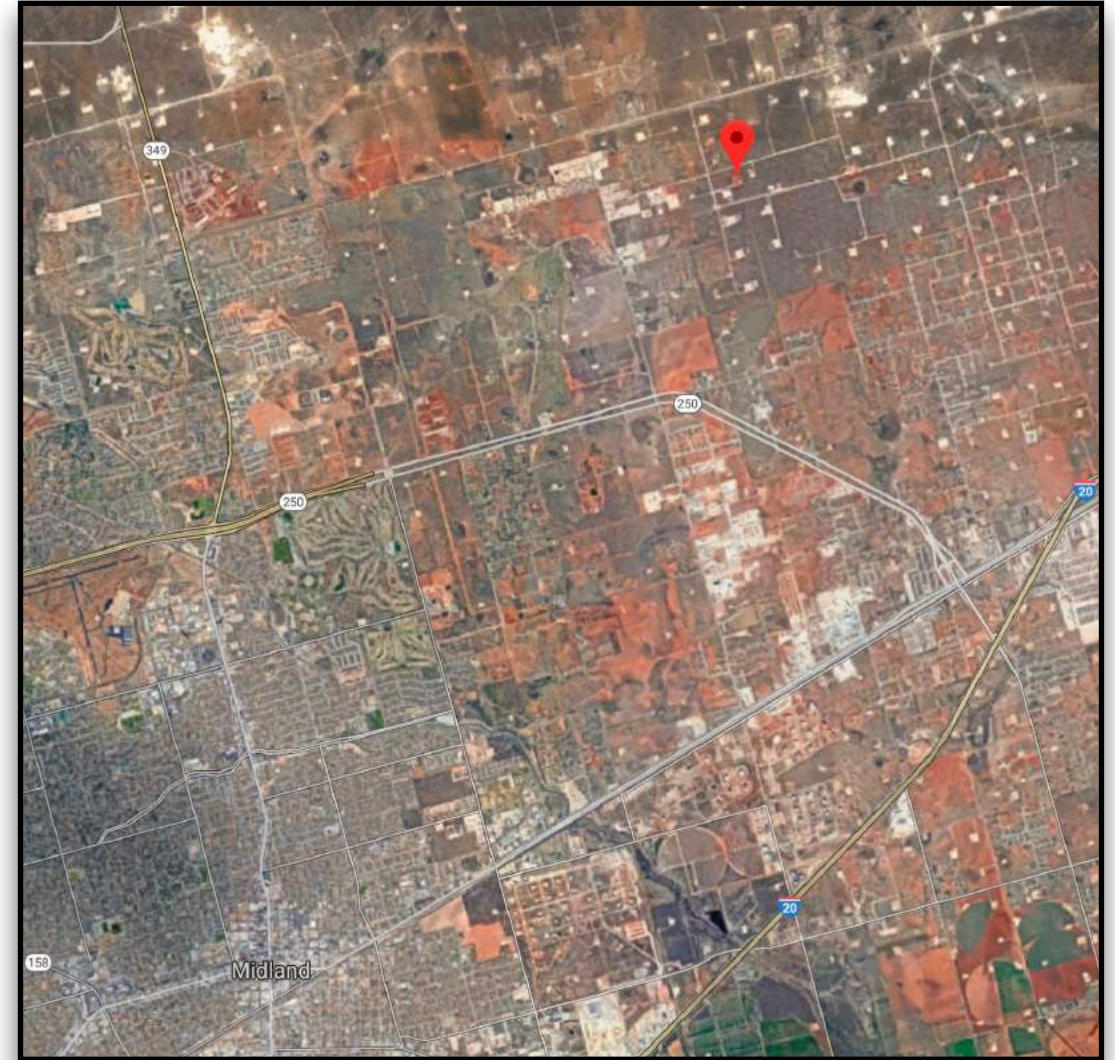
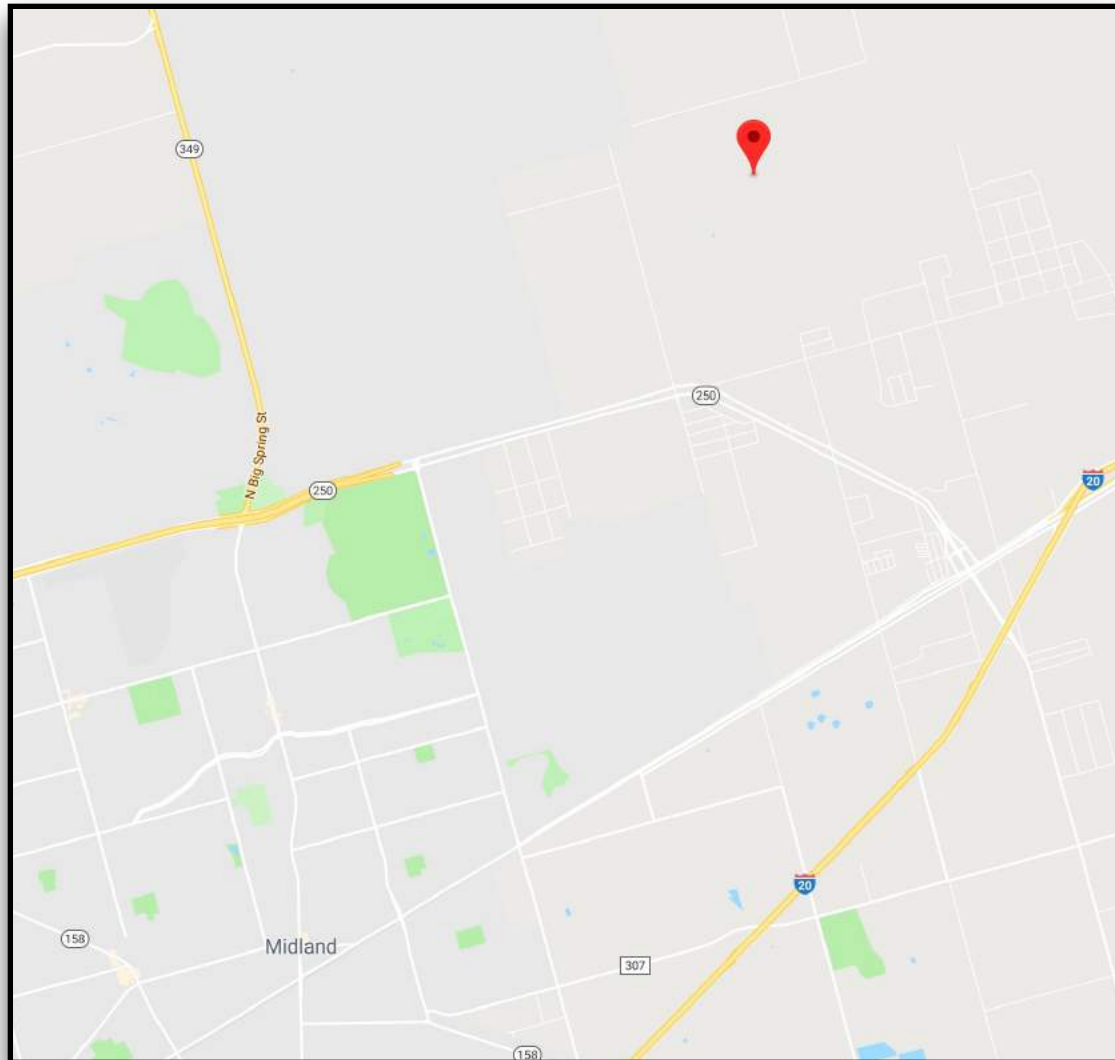
[www.CMRanchRealEstate.com](http://www.CMRanchRealEstate.com)





# Midland County | Midland, TX - 20± Acres

## \$695,000.00



**Click for Interactive Property Map**

**Texas law requires all real estate licensees to give the following information about brokerage services to prospective buyers, tenants, sellers, & landlords.**

**Information About Brokerage Services**

**DISCLAIMER – This property offering is subject to prior sale, change in price, or removal from market without notice. While the information provided is deemed reliable, it is not guaranteed by Caleb Matott or CM Ranch Real Estate.**

Presented By:  
**Caleb Matott, Broker/Owner**  
432-349-3330  
[BigDogRanchSales@mac.com](mailto:BigDogRanchSales@mac.com)

**CM Ranch Real Estate**

6800 W. County Rd. 48 | Midland, TX 79707 | 432-219-2220 | [RanchSpecialist@CMRanchRealEstate.com](mailto:RanchSpecialist@CMRanchRealEstate.com)

[www.CMRanchRealEstate.com](http://www.CMRanchRealEstate.com)