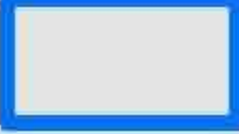
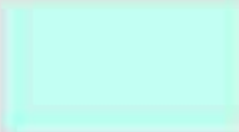

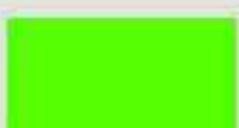


- +/- 320 acres
- A good network of interior roads & trails gives great access for management and recreation
- Abundant paved frontage on 2 county roads
- Potential lake sites
- Great populations of whitetail deer & wild turkey!
- Well managed, merchantable pine timber
- Wildlife Openings

Legend

-  Approximate Property Boundary +/-320 acres
-  Merchantable Pine Plantation
-  +/-8 yr. Old Pine Plantation
-  Wildlife Openings

All information provided is deemed accurate, but IS NOT guaranteed by Broker or Seller

+/- 320 acres
\$872,000
(\$2,725 / ac.)

GATE

Bill Hubbard Rd.

St. Johns Rd.

St. Johns Rd.

GATE

St. Johns Rd.

Source
USDA

CALL: (662) 416-8913
EMAIL: info@goDreamTree.com
VISIT: www.goDreamTree.com

0 750 1,500 3,000 Feet

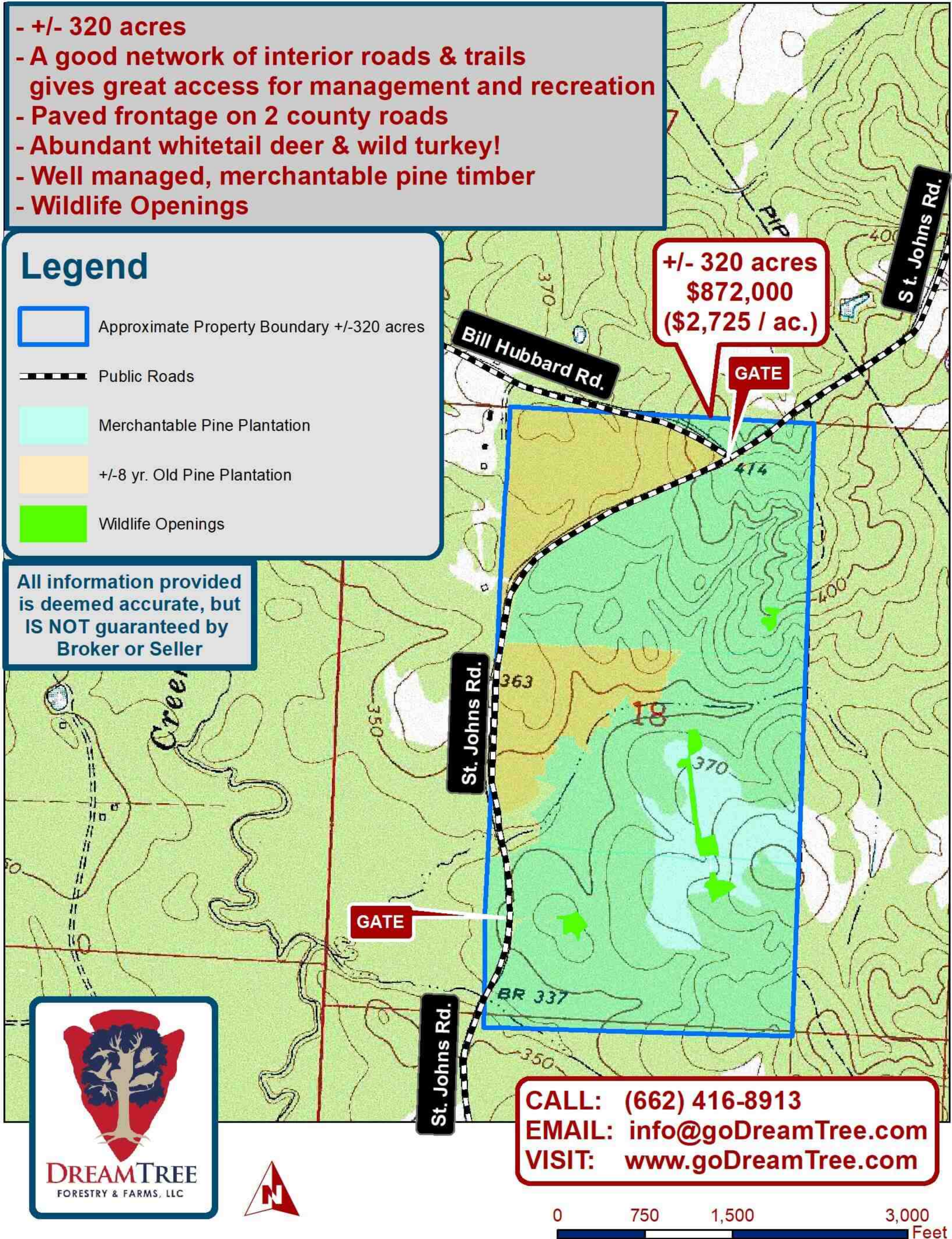


- +/- 320 acres
- A good network of interior roads & trails gives great access for management and recreation
- Paved frontage on 2 county roads
- Abundant whitetail deer & wild turkey!
- Well managed, merchantable pine timber
- Wildlife Openings

Legend

-  Approximate Property Boundary +/-320 acres
-  Public Roads
-  Merchantable Pine Plantation
-  +/-8 yr. Old Pine Plantation
-  Wildlife Openings

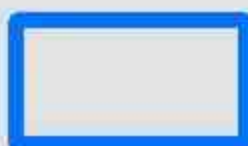
All information provided
is deemed accurate, but
IS NOT guaranteed by
Broker or Seller



CALL: (662) 416-8913
EMAIL: info@goDreamTree.com
VISIT: www.goDreamTree.com

- +/- 320 acres
- A good network of interior roads & trails gives great access for management and recreation
- Paved frontage on 2 county roads
- Abundant whitetail deer & wild turkey!
- Well managed, merchantable pine timber
- Wildlife Openings

Legend



Approximate Property Boundary +/- 320 acres



Public Roads

All information provided is deemed accurate, but IS NOT guaranteed by Broker or Seller

+/- 320 acres
\$872,000
(\$2,725 / ac.)

GATE

Bill Hubbard Rd.

St. Johns Rd.

St. Johns Rd.

GATE

St. Johns Rd.

Source
USDA

CALL: (662) 416-8913
EMAIL: info@goDreamTree.com
VISIT: www.goDreamTree.com



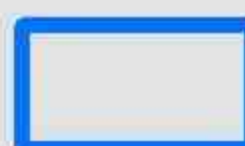
DREAMTREE
FORESTRY & FARMS, LLC



0 750 1,500 3,000 Feet

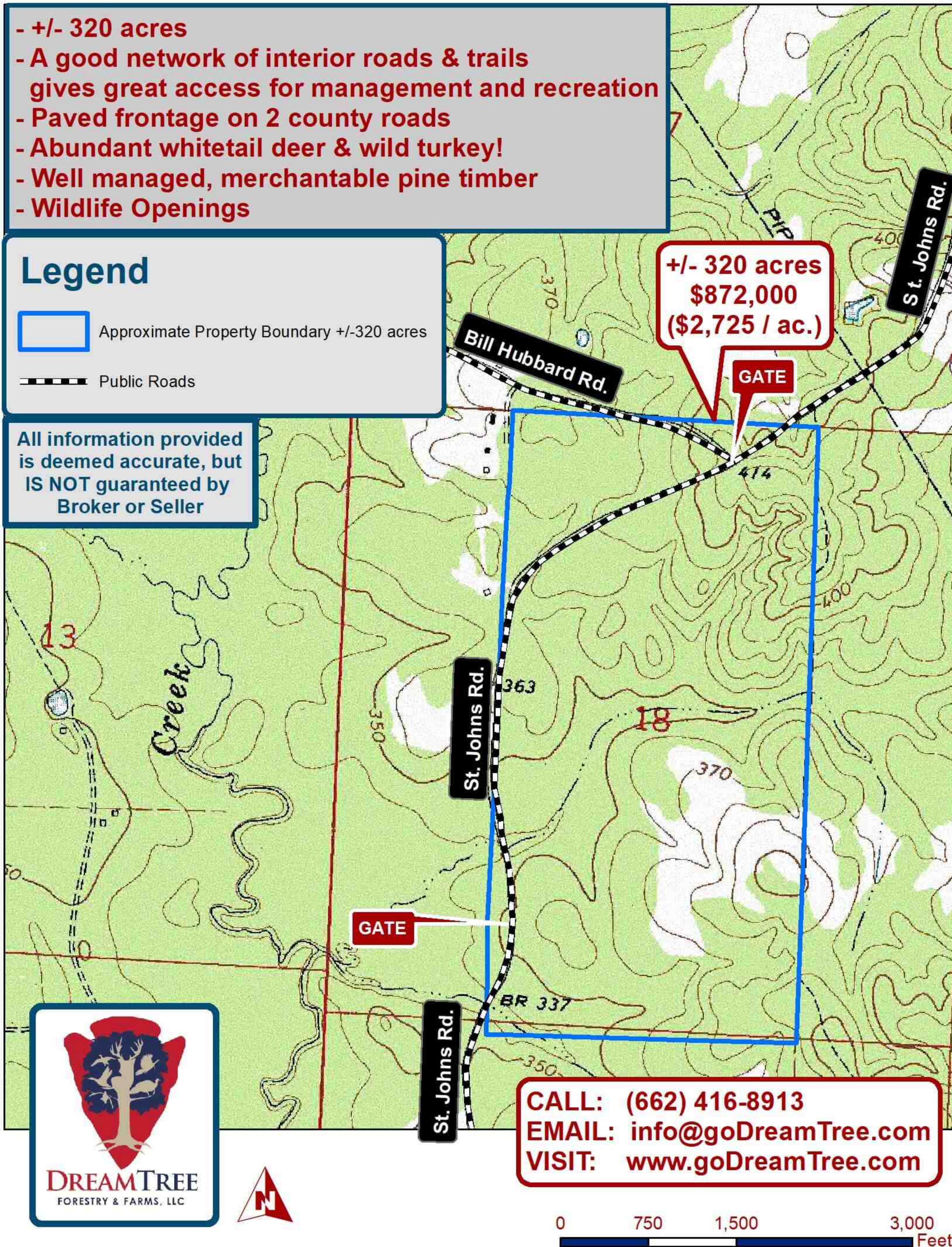
- +/- 320 acres
- A good network of interior roads & trails gives great access for management and recreation
- Paved frontage on 2 county roads
- Abundant whitetail deer & wild turkey!
- Well managed, merchantable pine timber
- Wildlife Openings

Legend

 Approximate Property Boundary +/-320 acres

 Public Roads

All information provided is deemed accurate, but IS NOT guaranteed by Broker or Seller

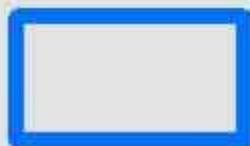


CALL: (662) 416-8913
 EMAIL: info@goDreamTree.com
 VISIT: www.goDreamTree.com

0 750 1,500 3,000 Feet

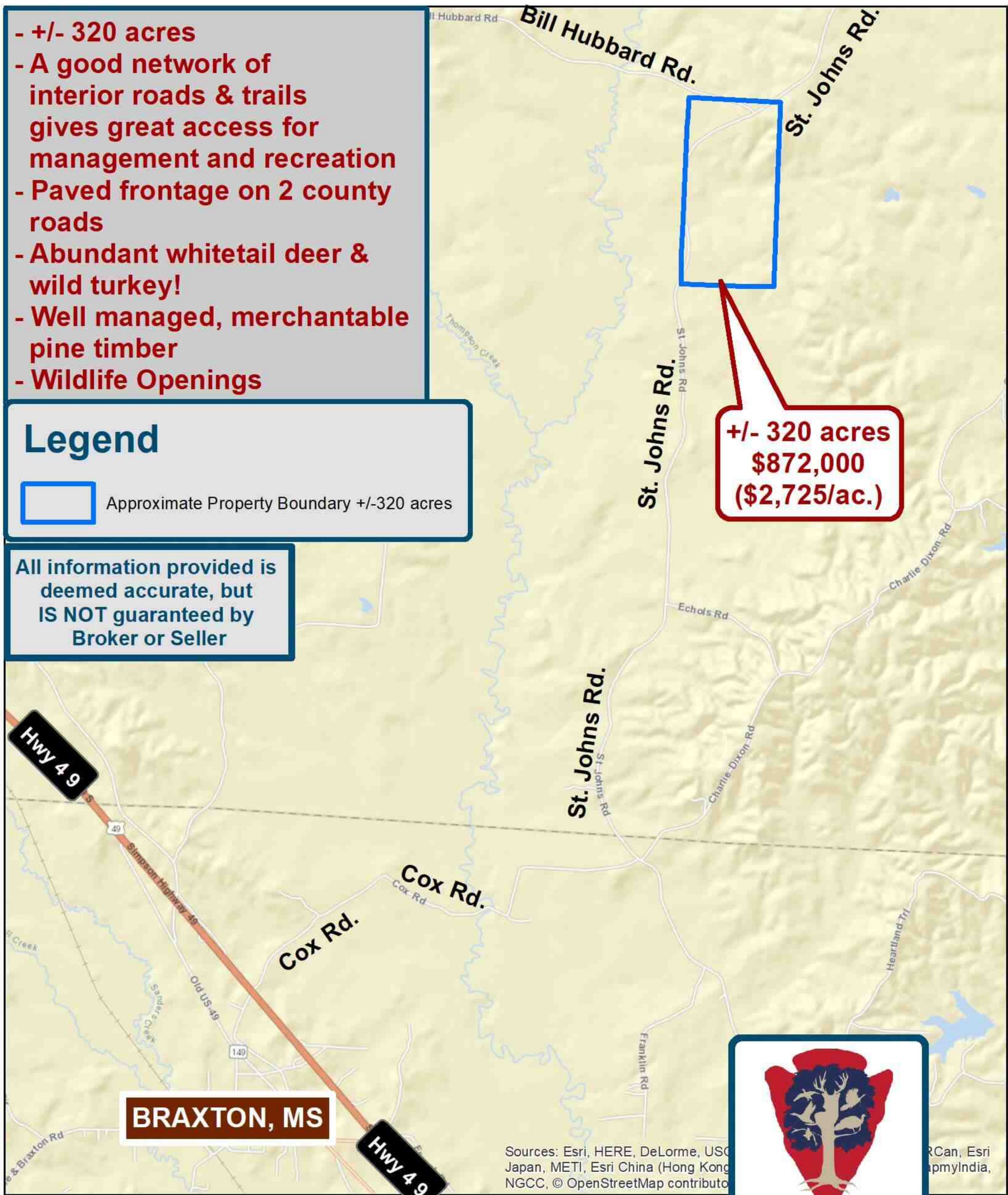
- +/- 320 acres
- A good network of interior roads & trails gives great access for management and recreation
- Paved frontage on 2 county roads
- Abundant whitetail deer & wild turkey!
- Well managed, merchantable pine timber
- Wildlife Openings

Legend



Approximate Property Boundary +/-320 acres

All information provided is deemed accurate, but IS NOT guaranteed by Broker or Seller



BRAXTON, MS

CALL: (662) 416-8913
EMAIL: info@goDreamTree.com
VISIT: www.goDreamTree.com



0 0.5 1 2 Miles

Legend



Approximate Property Location +/-320 acres

- +/- 320 acres
- A good network of interior roads & trails gives great access for management and recreation
- Paved frontage on 2 county roads
- Abundant whitetail deer & wild turkey!
- Well managed, merchantable pine timber
- Wildlife Openings

JACKSON, MS

**+/- 320 acres
\$872,000
(\$2,725/ac.)**



DREAMTREE
FORESTRY & FARMS, LLC

CALL: (662) 416-8913
EMAIL: info@goDreamTree.com
VISIT: www.goDreamTree.com

All information provided is
deemed accurate, but
IS NOT guaranteed by
Broker or Seller



0 5 10 20
Miles