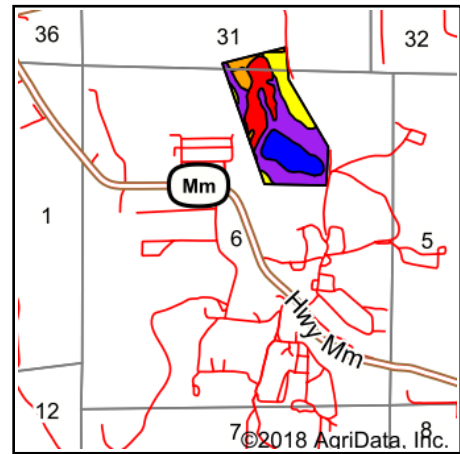
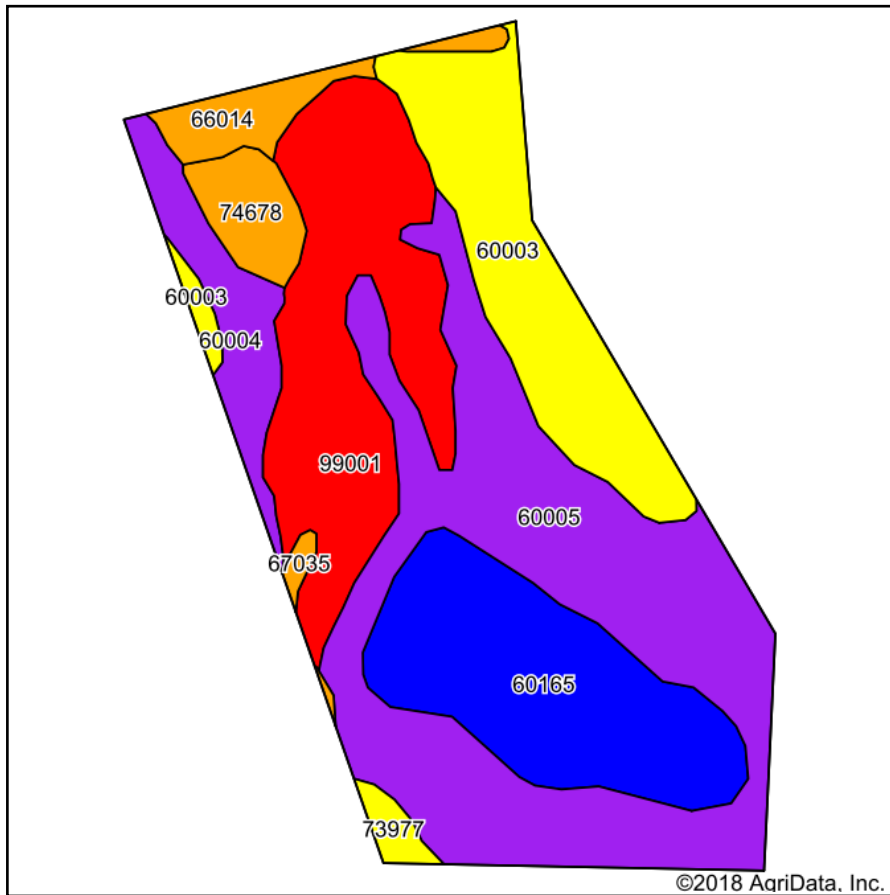


Soils Map



State: **Missouri**
 County: **Franklin**
 Location: **6-43N-2E**
 Township: **Boles**
 Acres: **70.2**
 Date: **5/3/2018**



Maps Provided By:



Area Symbol: MO071, Soil Area Version: 20

Code	Soil Description	Acres	Percent of field	Non-Irr Class Legend	Non-Irr Class *c	Corn	Grass legume hay	Grass legume pasture	Soybeans	Wheat
60005	Menfro silt loam, 20 to 45 percent slopes	24.09	34.3%		Vle					
99001	Water	13.83	19.7%		VIII					
60165	Menfro silt loam, 2 to 5 percent slopes	12.20	17.4%		Ile	142	4.4	7.3	43	55
60003	Menfro silt loam, 9 to 14 percent slopes, eroded	10.52	15.0%		IVe					
60004	Menfro silt loam, 14 to 20 percent slopes, eroded	3.91	5.6%		Vle					
66014	Haymond silt loam, 0 to 3 percent slopes, frequently flooded	2.35	3.3%		IIIw					
74678	Racoon silt loam, 0 to 2 percent slopes, occasionally flooded	2.25	3.2%		IIIw					
73977	Wrengart silt loam, 8 to 15 percent slopes, eroded	0.71	1.0%		IVe					
67035	Haymond silt loam, 1 to 3 percent slopes, frequently flooded	0.34	0.5%		IIIw					
Weighted Average						24.7	0.8	1.3	7.5	9.6

*c: Using Capabilities Class Dominant Condition Aggregation Method

Soils data provided by USDA and NRCS.