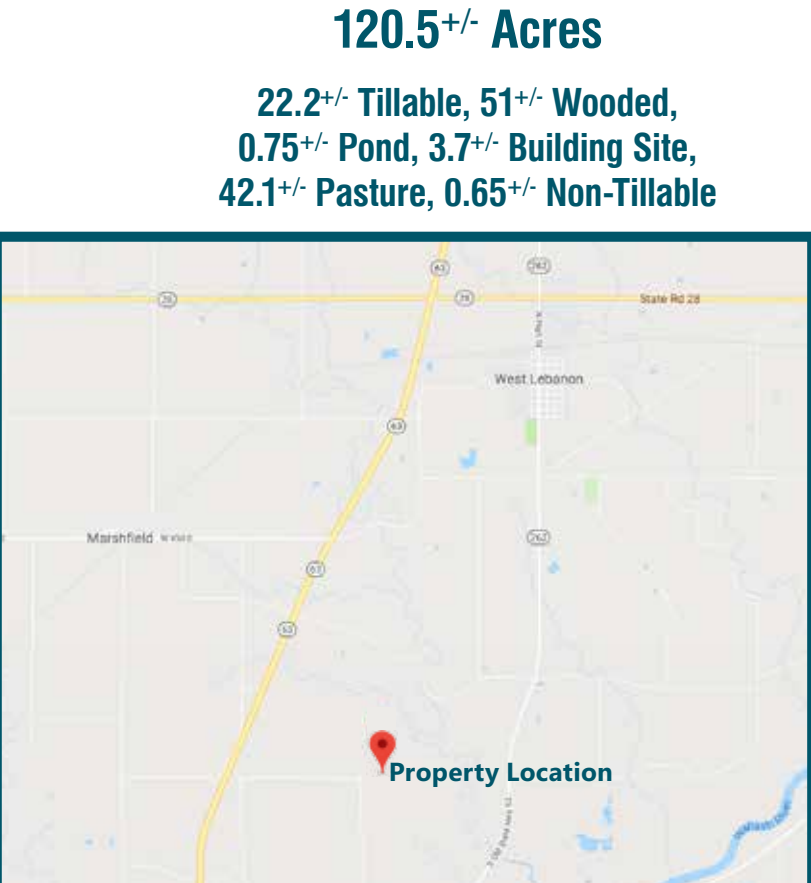
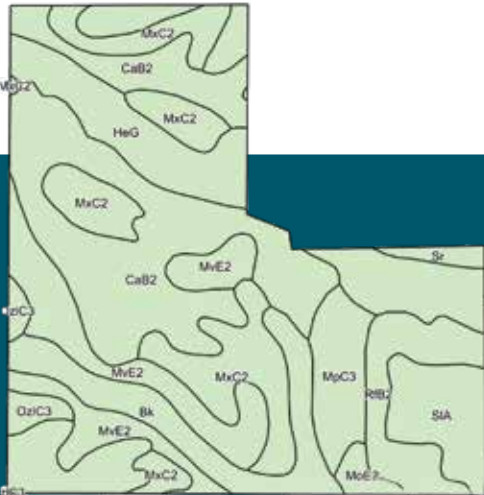


Available for
Hunting in 2018
& Farming in 2019.
Whitetail Deer &
Wild Turkey on Property.

FOR SALE: Beautiful Hunting & Recreational Property and/or Cattle Farm

Soil Information

Code	Soil Description <small>Field borders provided by Farm Service Agency as of 5/21/2008. Soils data provided by USDA and NRCS.</small>	Acres	Corn	Soybeans
CaB2	Cadiz silt loam, moderately wet, 1 to 6 percent slopes, eroded	35.84	131	46
HeG	Hennepin loam, 25 to 50 percent slopes	18.29	14	5
MxC2	MorleyCadiz silt loams, moderately wet, 6 to 12 percent slopes, eroded	18.05	121	42
MvE2	Morley silt loam, moderately wet, 15 to 25 percent slopes, eroded	15.01		
Bk	Beckville loam, occasionally flooded	9.89		
RfB2	RainsvilleWilliamstownRockfield silt loams, 2 to 6 percent slopes, eroded	7.27	133	47
SIA	Starks silt loam, till substratum, 0 to 2 percent slopes	6.69	160	52
MpC3	Miami clay loam, 6 to 12 percent slopes, severely eroded	5.79	121	41
OzIC3	Ozaukee silty clay loam, 6 to 12 percent slopes, severely eroded	2.04	105	33
MoE2	Miami loam, 15 to 25 percent slopes, eroded	1.29		
Sr	StonelickMoundhaven complex, frequently flooded	1.12	73	26
Weighted Average		83.8		29



FOR SALE: Beautiful Hunting & Recreational Property and/or Cattle Farm

4976 W 650 S, Williamsport, IN 47993

Available for Hunting in 2018 & Farming in 2019.
Whitetail Deer & Wild Turkey on Property.

Visit halderman.com to View an Aerial Tour of the Property.



Sam Clark
317.442.0251
samc@halderman.com



Jim Clark
765.659.4841
jimc@halderman.com

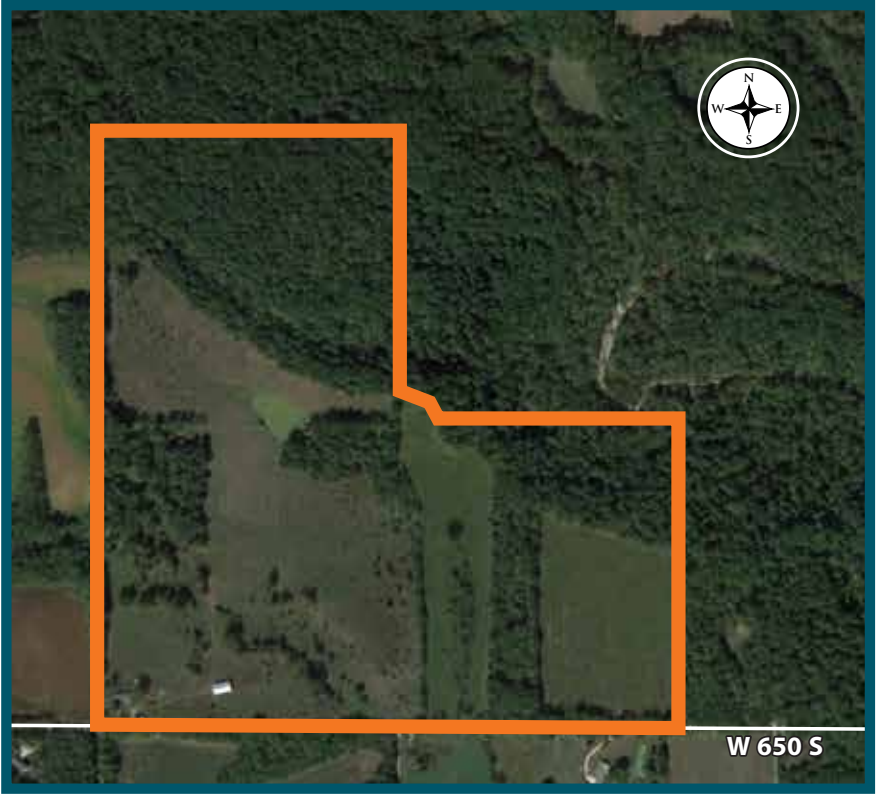
- Quiet and peaceful location
- 45 minutes from Lafayette, 1 hour from Indianapolis area, less than 2 hours from Chicago area
- Property has been cleaned up to make it ideal for hunting, recreation or a cattle farm.
- Two barns, electric and well already on the property
- Whitetail deer, wild turkey and other game are plentiful
- Wooded acreage containing both mature and young timber



44' x 80' Implement Barn



24' x 26' Tool Shed



Property Information

LOCATION
3 miles south of West Lebanon, IN.
1.1 miles east of Hwy 63 on the
north side of CR 650 South

SCHOOL DISTRICT
Warren County Schools

ANNUAL TAXES
\$1,757.96

DITCH ASSESSMENT
\$5.07

ZONING
Agricultural

TOPOGRAPHY
Gently Rolling

AGENCY & DISCLAIMER: Halderman Real Estate Services, Inc. (HRES) and their representatives are exclusive agents of the Sellers. All information herein and in related materials is deemed to be accurate to the best available knowledge, but cannot be warranted or guaranteed. All information is subject to verification by parties relying upon it, and no liability for its accuracy, errors, or omissions is assumed by the Sellers or HRES.