



Illinois Tillable & Timber Land for Sale - Madison County

T R O P H Y
PROPERTIES AND AUCTION
LAND | RECREATIONAL | RESIDENTIAL

www.TrophyPA.com • 855.573.5263 • leads@trophyPA.com



PROPERTY ADDRESS:

00 Riehl Lane—TRACT 1
Godfrey, IL 62035

PRICE: \$100,478.07

ACRES: 16.11

COUNTY: Madison

PROPERTY DESCRIPTION:

Identified as Tract #1 on the map, this 16 +/- acres off of Riehl Lane is in a beautiful setting in Godfrey, IL. 3 +/- acres of the parcel are tillable, and the balance is timber. This would make an excellent home site or mini farm. Additional acreage is available for purchase.



PRESENTED BY:

PHIL BROWN

Broker/Partner

M: (314) 753-7444

P: (855) 573-5263 x700

philbrown@trophyPA.com

PROPERTY HIGHLIGHTS:

- 16.11 acre parcel in Godfrey, IL
- 3 +/- acres of tillable, the balance is timber
- Excellent home site or mini-farm
- Additional acreage available

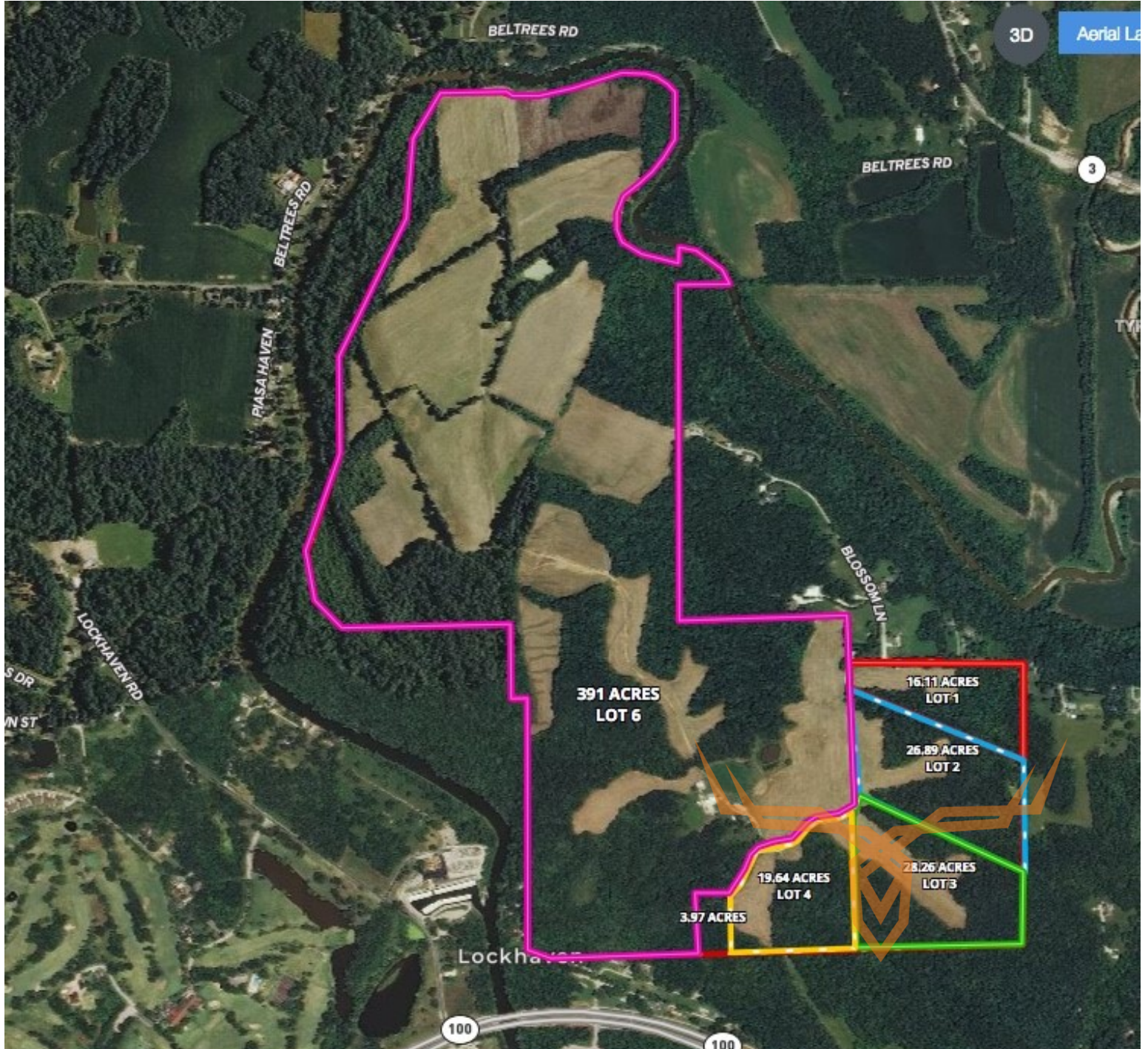
Trophy Properties and Auction
15480 Clayton Road
Suite 101
Ballwin, MO 63011
www.TrophyPA.com
leads@trophyPA.com



Illinois Tillable & Timber Land for Sale - Madison County

T R O P H Y
PROPERTIES AND AUCTION
LAND | RECREATIONAL | RESIDENTIAL

www.TrophyPA.com • 855.573.5263 • leads@trophy.com



Broker does not guarantee the accuracy of sq. ft., lot size, or other information, buyer is advised to independently verify the accuracy of information through personal inspection and with appropriate professionals