



# Illinois Tillable & Timber Land for Sale - Madison County

**T R O P H Y**  
PROPERTIES AND AUCTION  
LAND | RECREATIONAL | RESIDENTIAL

www.TrophyPA.com • 855.573.5263 • leads@trophyPA.com



## PROPERTY ADDRESS:

00 Riehl Lane—Lot 3  
Godfrey, IL 62035

**PRICE:** \$176,257

**ACRES:** 28.26

**COUNTY:** Madison

## PROPERTY DESCRIPTION:

A beautiful 28.26 acre parcel (Lot 3) off Riel Lane in Godfrey, IL. Over 6 acres of productive tillable on this property currently in production. The balance is timber. This is an excellent home site or mini-farm. Additional acreage is also available.



**PRESENTED BY:**

**PHIL BROWN**

**Broker/Partner**

M: (314) 753-7444

P: (855) 573-5263 x700

philbrown@trophyPA.com

## PROPERTY HIGHLIGHTS:

- 28.26 acre parcel in Godfrey, IL
- 6.5 +/- acres of tillable currently in production, the balance is in timber
- Excellent home site or mini-farm
- Additional acreage available
- Final price to be per surveyed acre

Trophy Properties and Auction  
15480 Clayton Road  
Suite 101  
Ballwin, MO 63011  
www.TrophyPA.com  
leads@trophyPA.com

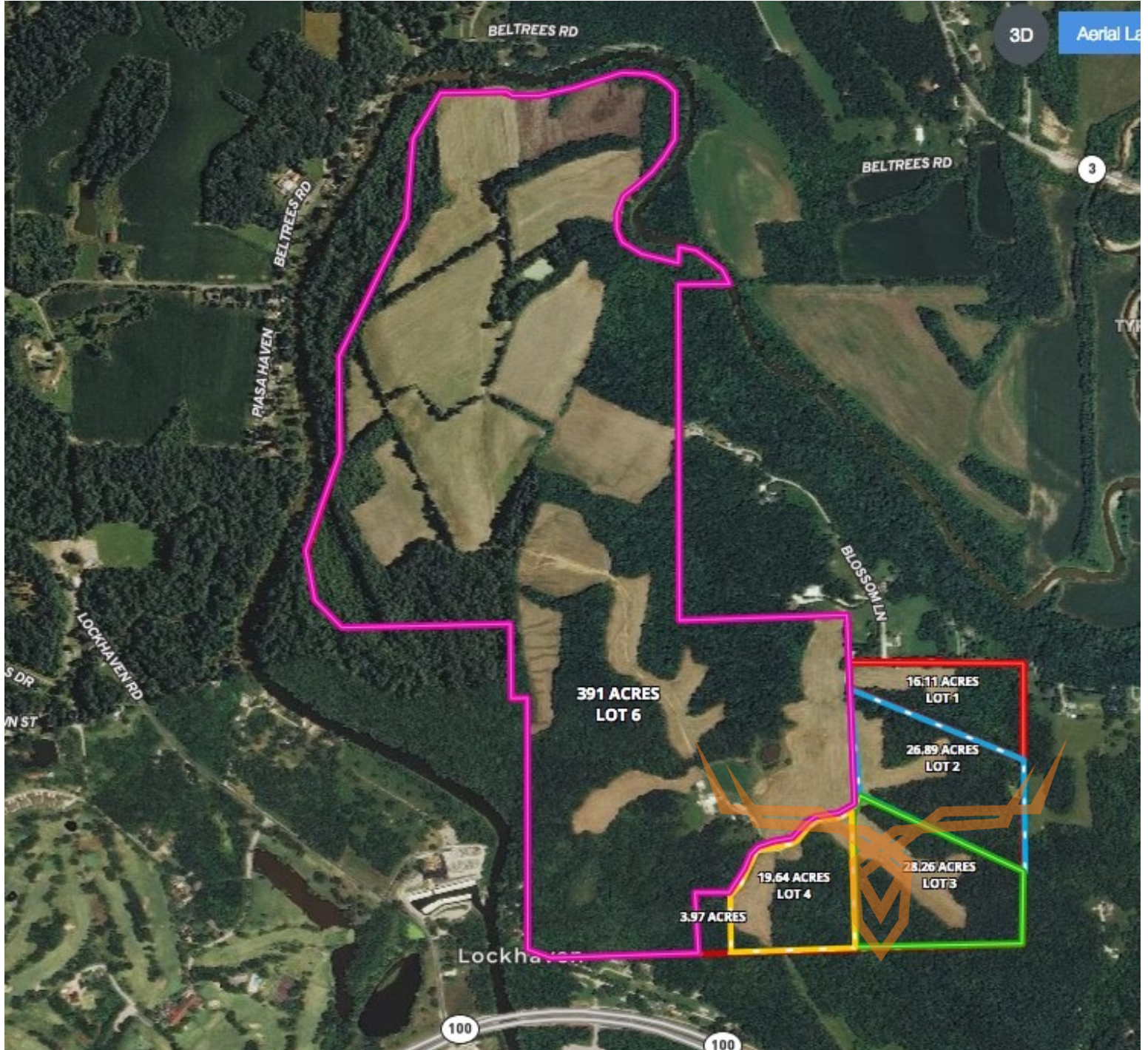




# Illinois Tillable & Timber Land for Sale - Madison County

**T R O P H Y**  
PROPERTIES AND AUCTION  
LAND | RECREATIONAL | RESIDENTIAL

[www.TrophyPA.com](http://www.TrophyPA.com) • 855.573.5263 • [leads@trophy.com](mailto:leads@trophy.com)



Broker does not guarantee the accuracy of sq. ft., lot size, or other information, buyer is advised to independently verify the accuracy of information through personal inspection and with appropriate professionals