



T R O P H Y
PROPERTIES AND AUCTION
LAND | RECREATIONAL | RESIDENTIAL

Illinois Land for Sale - Madison County

www.TrophyPA.com • 855.573.5263 • leads@trophyPA.com



PROPERTY ADDRESS:

00 Riehl Lane—Lot 4
Godfrey, IL 62035

PRICE: \$122,494

ACRES: 19.64

COUNTY: Madison

PROPERTY DESCRIPTION:

19.64 +/- acres (Lot 4) located at the end of Riehl Road near Godfrey, IL. This parcel is in a beautiful rural setting and would make an excellent home site or mini farm. There is additional acreage available should you like to piece together an even larger farm.



PRESENTED BY:

PHIL BROWN

Broker/Partner

M: (314) 753-7444

P: (855) 573-5263 x700

philbrown@trophyPA.com

PROPERTY HIGHLIGHTS:

- 19.64 acre parcel in Godfrey, IL
- 4.5 +/- acres tillable
- Excellent home site or mini-farm
- Additional acreage available
- Final price to be per surveyed acre

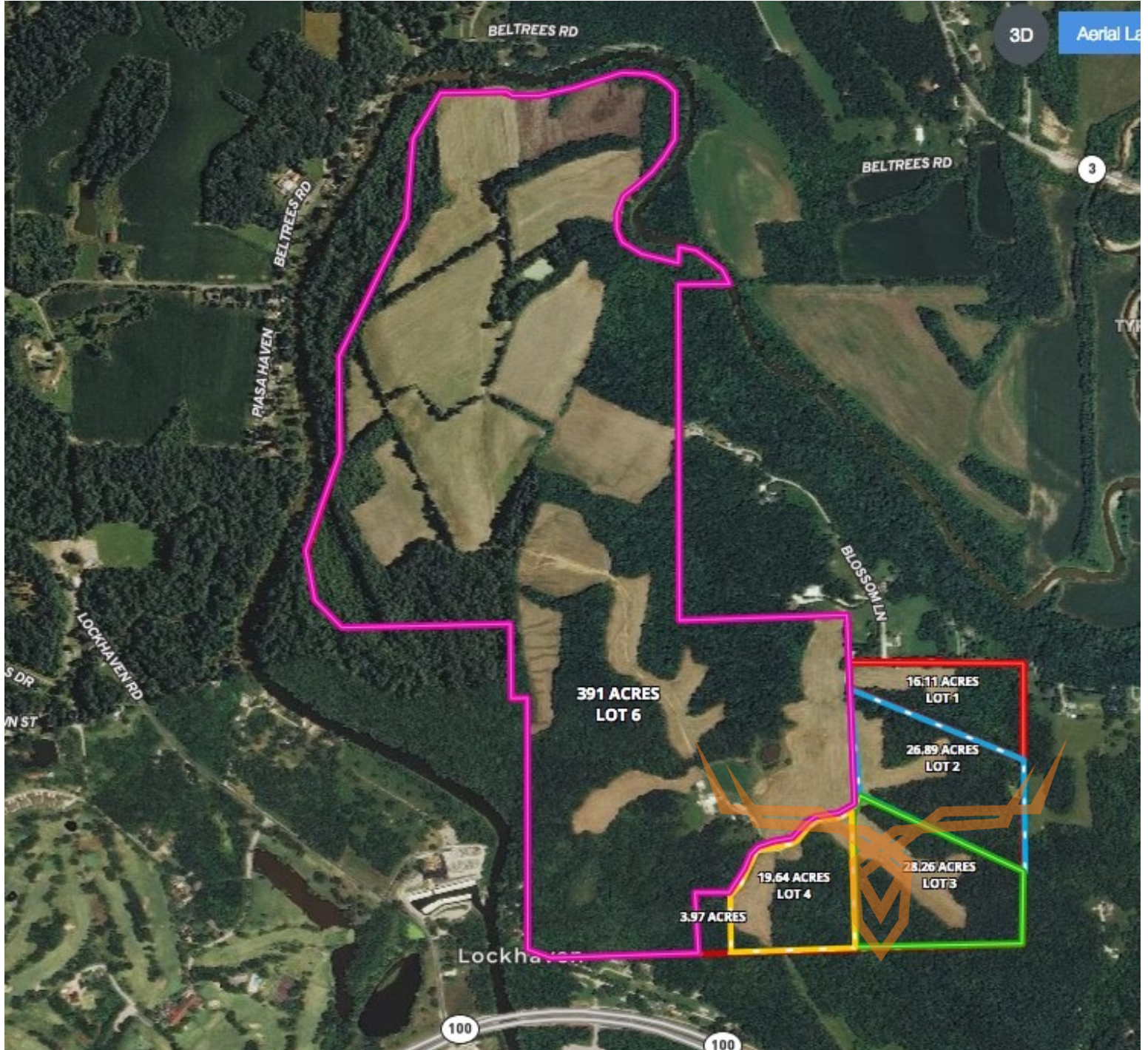
Trophy Properties and Auction
15480 Clayton Road
Suite 101
Ballwin, MO 63011
www.TrophyPA.com
leads@trophyPA.com



T R O P H Y
PROPERTIES AND AUCTION
LAND | RECREATIONAL | RESIDENTIAL

Illinois Land for Sale - Madison County

www.TrophyPA.com • 855.573.5263 • leads@trohypa.com



Broker does not guarantee the accuracy of sq. ft., lot size, or other information, buyer is advised to independently verify the accuracy of information through personal inspection and with appropriate professionals