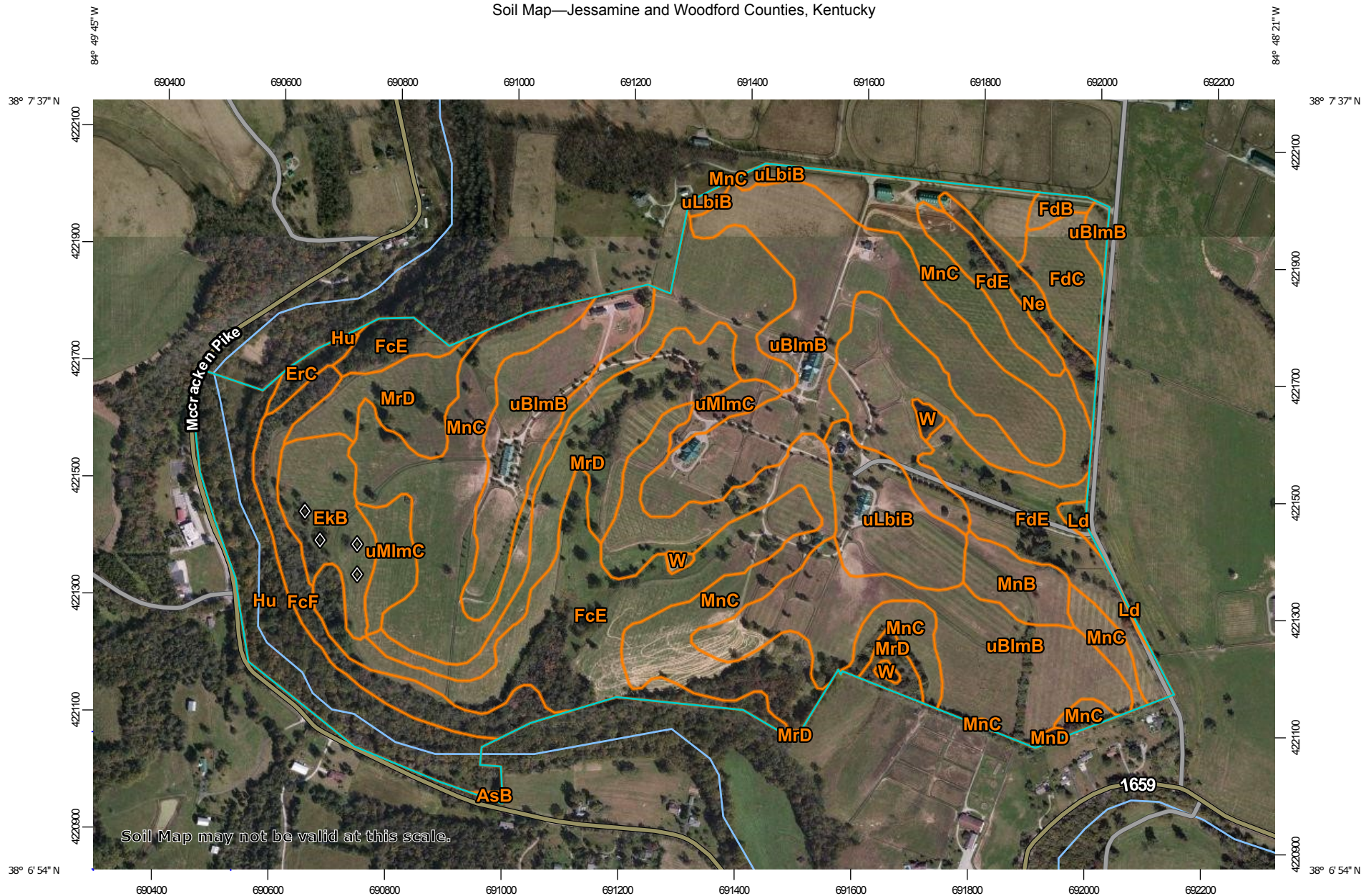


# Soil Map—Jessamine and Woodford Counties, Kentucky



Map Scale: 1:9,270 if printed on A landscape (11" x 8.5") sheet.

0 100 200 400 600 Meters

0 450 900 1800 2700 Feet

Map projection: Web Mercator Corner coordinates: WGS84 Edge tics: UTM Zone 16N WGS84



**Natural Resources  
Conservation Service**

Web Soil Survey  
National Cooperative Soil Survey

10/1/2018  
Page 1 of 3

## Map Unit Legend

Map Unit Symbol	Map Unit Name	Acres in AOI	Percent of AOI
AsB	Ashton silt loam, 2 to 6 percent slopes	0.1	0.0%
EkB	Elk silt loam, 2 to 6 percent slopes	8.4	2.8%
ErC	Elk silt loam, 6 to 12 percent slopes, rarely flooded	1.5	0.5%
FcE	Fairmount-Rock outcrop complex, 12 to 30 percent slopes	28.3	9.4%
FcF	Fairmount-Rock outcrop complex, 30 to 60 percent slopes	9.8	3.3%
FdB	Faywood silt loam, 2 to 6 percent slopes	1.1	0.4%
FdC	Faywood silt loam, 6 to 12 percent slopes	5.3	1.8%
FdE	Faywood silt loam, 12 to 30 percent slopes	15.5	5.2%
Hu	Huntington silt loam, 0 to 4 percent slopes, occasionally flooded	20.9	7.0%
Ld	Lindside silt loam, 0 to 2 percent slopes, occasionally flooded	0.7	0.2%
MnB	McAfee silt loam, 2 to 6 percent slopes	4.5	1.5%
MnC	McAfee silt loam, 6 to 12 percent slopes	88.5	29.5%
MnD	McAfee silt loam, 12 to 20 percent slopes	0.3	0.1%
MrD	McAfee-Rock outcrop complex, 6 to 20 percent slopes	24.4	8.1%
Ne	Newark silt loam, 0 to 2 percent slopes, occasionally flooded	3.7	1.2%
uBlmB	Bluegrass-Maury silt loams, 2 to 6 percent slopes	69.5	23.2%
uLbiB	Lowell-Bluegrass silt loams, 2 to 6 percent slopes	11.0	3.7%
uMlmC	Maury-Bluegrass silt loams, 6 to 12 percent slopes	5.6	1.9%
W	Water	1.1	0.4%
<b>Totals for Area of Interest</b>		<b>300.1</b>	<b>100.0%</b>