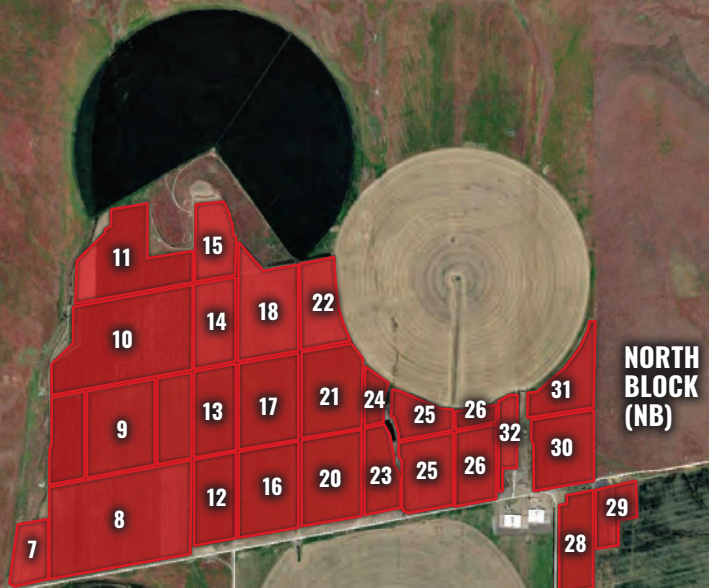




VARIETY	ACRES	TREES
Golden	94.58	19,425
Reds	76.71	18,558
SW Cherry	19.91	3,714
SK Cherry	9.44	2,190
Honeycrisp	98.13	97,081
Gala	126.7	148,318
Aztec Fuji	70.04	73,431
Granny	36.72	39,988
<b>Total</b>	<b>532.23</b>	<b>402,705</b>



**PERMANENT  
CROP PRODUCTION**

24





BLOCK #	ACRES	VARIETY	YEAR PLANTED	1ST HARVEST	YEAR ORGANIC	SPACING	TREES
NB#10	6.25	Golden	1985	1989	2017	9'x18'	1,681
NB#11	3	Golden	1985	1989	2017	9'x18'	807
NB#12	7.79	Golden	1985	1989	2017	12'x20'	1,418
NB#13	7.77	Golden	1985	1989	2017	12'x20'	1,414
NB#16	11.27	Golden	1985	1989	2017	12'x20'	2,051
NB#17	11.52	Golden	1985	1989	2017	12'x20'	2,096
NB#20	11.23	Golden	1985	1989	2017	12'x20'	2,043
NB#21	11.19	Golden	1985	1989	2017	12'x20'	2,036
NB#23	5.8	Golden	1985	1989	2017	12'x20'	1,055
NB#24	2.54	Golden	1985	1989	2017	12'x20'	462
NB#27	9.08	Golden	1985	1989	2018	9'x18'	2,442
NB#28	7.14	Golden	1985	1989	2018	9'x18'	1,920
<b>Total</b>	<b>94.58</b>	<b>Golden</b>					<b>19,425</b>
NB#29	3.12	TEST BLOCK					
NB#10	18.68	Reds	1985	1989	2017	9'x18'	5,025
NB#11	9.1	Reds	1985	1989	2017	10'x18'	2,448
SB#2	11.34	Reds	1985	1989	2018	10'x18'	2,744
SB#3	11.29	Reds	1985	1989	2018	10'x18'	2,732
SB#5	12.46	Reds	1985	1989	2018	10'x18'	3,015
SB#6	10.72	Reds	1985	1989	2018	10'x18'	2,594
<b>Total</b>	<b>73.59</b>	<b>Red</b>					<b>18,558</b>
SB#1	9.12	SW Cherry	2007	2010	2017	18'x20'	1,103
SB#7	10.79	SW Cherry	2007	2010	2017	18'x20'	2,611
<b>Total</b>	<b>19.91</b>	<b>SW Cherry</b>					<b>3,714</b>
SB#4	9.44	SK Cherry	2008	2010	2017	8'x20'	2,190
<b>Total</b>	<b>9.44</b>	<b>SK Cherry</b>					<b>2,190</b>
NB#30	4.46	Honeycrisp	2011	2014	2017	6'x10'	3,238
NB#31	5.5	Honeycrisp	2011	2014	2017	4'x10'	5,989
NB#32	6.91	Honeycrisp	2011	2014	2017	4'x10'	7,525
SB#10	15.97	Honeycrisp	2012	2016	2019	4'x12'	14,500
SB#11	11.47	Honeycrisp	2012	2016	2019	4'x10'	12,490
SB#12	14.93	Honeycrisp	2012	2016	2019	4'x10'	16,258
SB#13	9.78	Honeycrisp	2012	2016	2019	4'x10'	10,650
SB#8	14.25	Honeycrisp	2013	2017	2019	4'x12'	12,939
SB#9	14.86	Honeycrisp	2013	2017	2019	4'x12'	13,492
<b>Total</b>	<b>98.13</b>	<b>Honeycrisp</b>					<b>97,081</b>
NB#14	7.63	Gala	2015	2018	2020	4'x10'	8,309
NB#15	8	Gala	2015	2018	2020	4'x10'	8,712
NB#18	11.41	Gala	2015	2018	2020	4'x10'	12,425
NB#25	12.8	Gala	2008	2011	2017	4'x10'	13,938
NB#26	8.24	Gala	2008	2011	2017	4'x10'	8,972
NB#32	2.96	Gala	2013	2017	2019	4'x10'	3,223
NB#7	2	Gala	2014	2017	2020	4'x10'	2,178
SEB#1	10.55	Gala	2012	2016	2019	4'x10'	11,489
SEB#2	22.89	Gala	2012	2016	2019	4'x10'	24,927
SEB#3	15.72	Gala	2012	2017	2019	4'x10'	17,119
SEB#4	15	Gala	2013	2019	2019	4'x10'	16,335
SEB#5	9.5	Gala	2014	2017	2020	2'x10'	20,691
<b>Total</b>	<b>126.7</b>	<b>Gala</b>					<b>148,318</b>
NB#9	28.84	Aztec Fuji	2010	2013	2017	4'x10'	28,750
NB#10	1.2	Aztec Fuji	2012	2016	2019	4'x10'	1,121
SEB#6	40	Aztec Fuji	2016	2020	2021	4'x10'	43,560
<b>Total</b>	<b>70.04</b>	<b>Aztec Fuji</b>					<b>73,431</b>
NB#8	29.82	Granny	2012	2015	2014	4'x10'	32,474
NB#22	6.9	Granny	2015	2019	2021	4'x10'	7,514
<b>Total</b>	<b>36.72</b>	<b>Granny</b>					<b>39,988</b>
<b>Total</b>	<b>532.23</b>						<b>402,705</b>

# PERMANENT CROPS

Optimal elevations, favorable slope and aspect of hillsides, excellent soils, and abundant water rights make this property a tremendous permanent crop asset.

Approximately 52% of the apples and cherries are currently USDA Certified Organic. An additional 40% of the apples and cherries are in the organic transitional stage and will be certified in 2019 and 2020. This provides an established, yet niche opportunity in an ever-expanding global market where demand remains high and continues to grow.

On-site, modern, controlled atmosphere storage coupled with immediate access to efficient travel corridors and outlets to major markets is a distinct benefit of the property.

The table here illustrates the variety of permanent crops that are planted on the property - most of which are on highly dwarfing rootstock with high density, seven-wire, vertical trellis systems with one to three leaders per tree post.

## ORGANIC CERTIFICATION SUMMARY

Certified in accordance with USDA Organic Regulations - Title 7 CFR Part 205, National Organic Program.  
 Organic Certificate Issued To: BZ Blackrock, LLC  
 Operation Certified Scope: Crop Producer  
 Certification Number: 3272  
 NOP Operation ID: 2780003272  
 Current Certificate Issue Date: 07/12/2017  
 Certified by WSDA Organic Program Since: 2017

## ORGANIC SITES

1. North Block 1: 184.43 Acres
2. North Block 2: 16.87 Acres
3. South Block 3: 75.13 Acres

## ORGANIC CROPS

Apples: Fuji, Gala, Golden Delicious, Granny Smith, Honeycrisp, Red Delicious  
 Cherries: Skeena, Sweetheart

