

**FOR SALE**



**PEARSON  
REALTY**

AGRICULTURAL PROPERTIES  
*A Tradition in Trust Since 1919*

## **Lindsay Area Olives and Home**



**18.95± Assessed Acres  
Tulare County, California**

- Lindmore Irrigation District & Ag Well
- Newer 2,977± sqft Home
- Good Soils

**Exclusively Presented By:  
Pearson Realty**



**CALIFORNIA'S LARGEST AG BROKERAGE FIRM**

[www.pearsonrealty.com](http://www.pearsonrealty.com)

CA BRE #00020875



# Lindsay Area Olives and Home

**18.95± Assessed Acres**

**\$720,000**

**DESCRIPTION:**

Available for sale is an 18.95± acre property partially planted to olives with open ground. There is also a custom 2,977± square foot home built in 2009. The home features 5 bedrooms, 3 bathrooms, an open layout with a large kitchen and living room as well as a two car garage.

**LOCATION:**

The property is located near the southeast corner of Road 196 and Avenue 200 just north of Plainview and west of Strathmore, California. The property address is 19876 Avenue 200, Lindsay, CA.

**LEGAL:**

Tulare County APN: 214-160-014.  
The property is under the Williamson Act Contract.

**PLANTINGS:**

9± acres of Manzanillo olives.  
7± acres of open ground.

**WATER:**

Irrigation water is provided by Lindmore Irrigation district and from one Ag well on the southeast corner. The orchard is furrow irrigated.

**SOILS:**

Exeter loam, 0 to 2 percent slopes.

**PRICE/TERMS:**

The asking price is \$720,000.

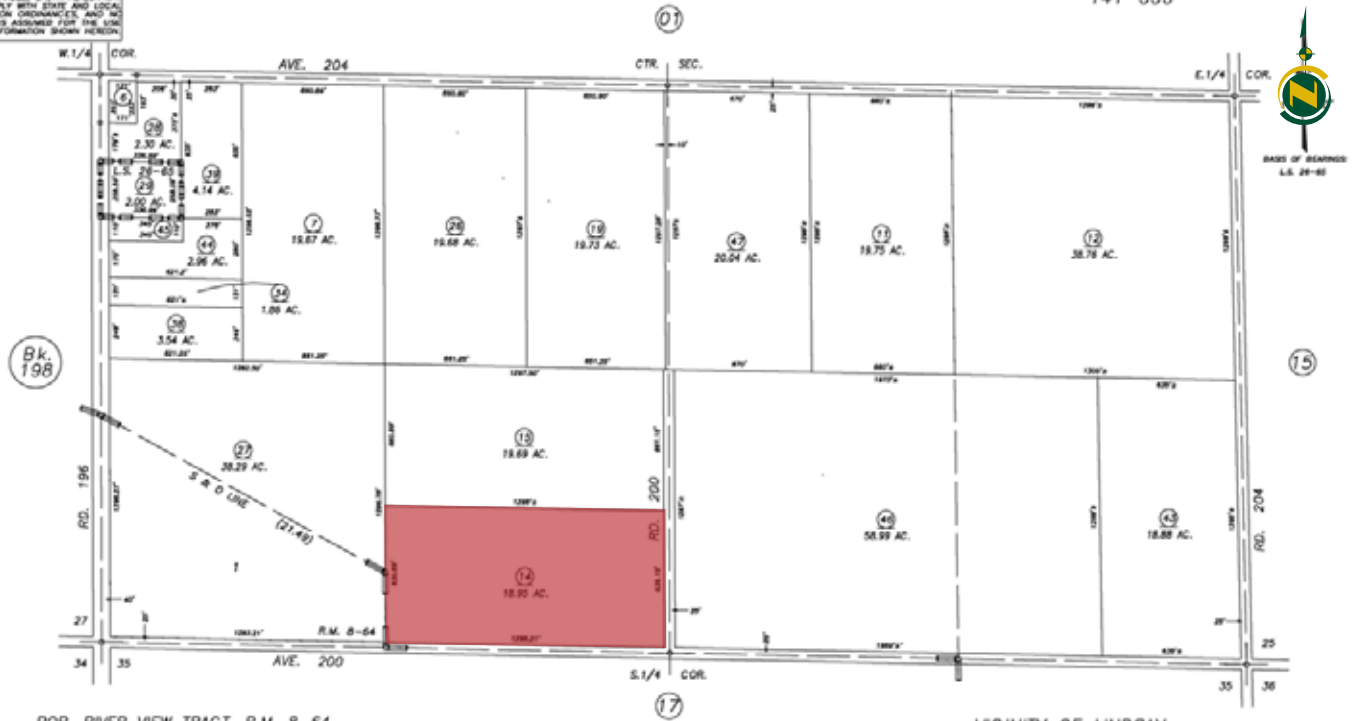
# ASSESSOR'S PARCEL MAP

S1/2 SEC.26, T.20S., R.26E., M.D.B.&M.

Tax Area Codes 214-16

141-001  
141-006

**DISCLAIMER**  
THIS MAP WAS PREPARED FOR LOCAL PROPERTY ASSESSMENT PURPOSES ONLY AND THE PARCELS SHOWN HEREON MAY NOT COMPLY WITH STATE AND LOCAL SUBDIVISION ORDINANCES, AND NO LIABILITY IS ASSIGNED FOR THE USE OF THE INFORMATION SHOWN HEREON.



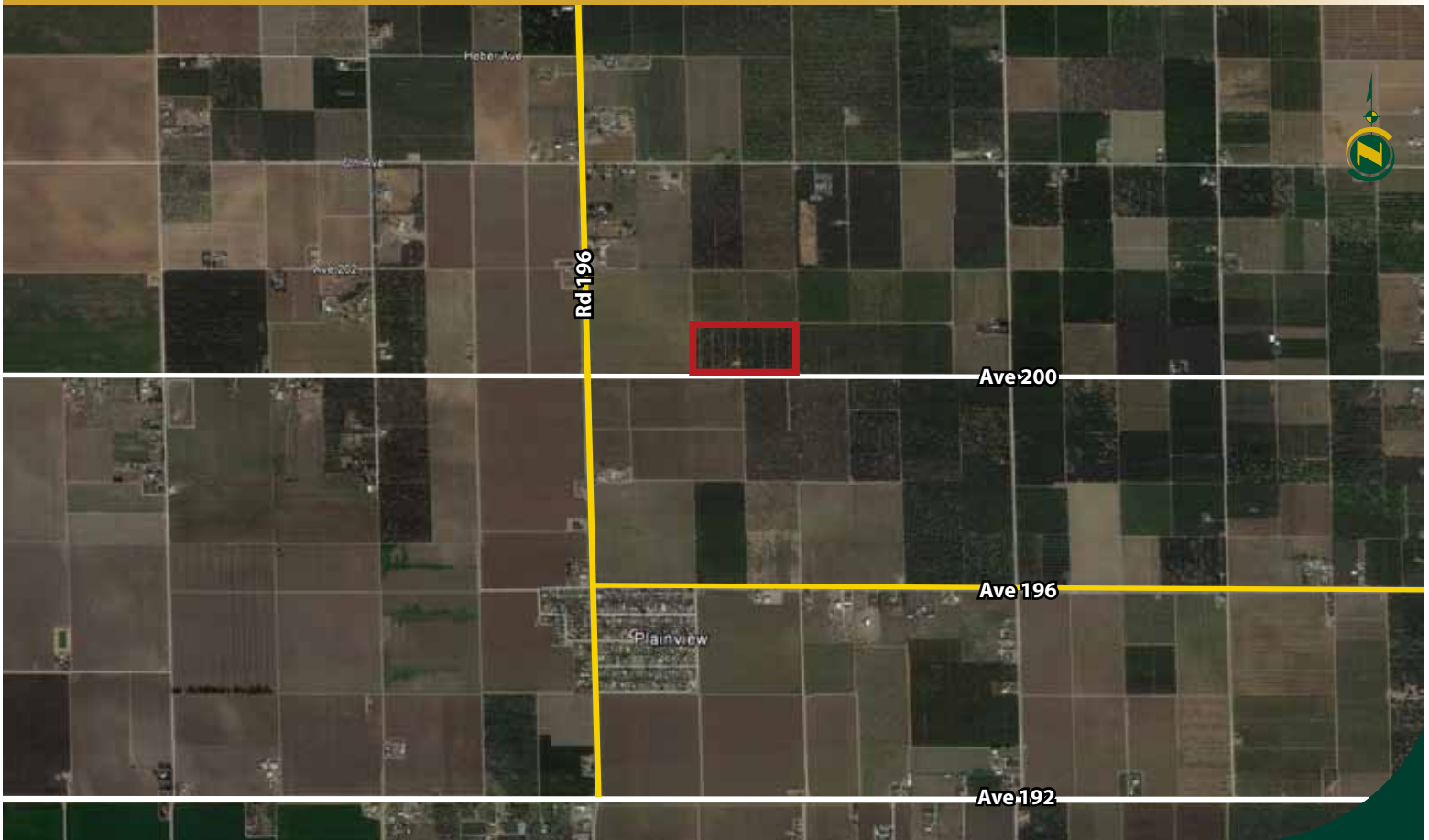
POR. RIVER VIEW TRACT, R.M. 8-64  
RECORD OF SURVEY, 26-65

VICINITY OF LINDSAY  
ASSESSOR'S MAPS BK.214 , PG.16  
COUNTY OF TULARE, CALIFORNIA, U.S.A.

NOTE: Assessor's Parcel Numbers Shown in Circles 123  
Assessor's Block Numbers Shown in Ellipses 198

2005-0144121	08/12/2008	GBT
REVISION	DATE	TECH

# AERIAL MAP



# LOCATION MAP



# REGIONAL MAP



We believe the information contained herein to be correct. It is obtained from sources which we regard as reliable, but we assume no liability for errors or omissions. Policy on cooperation: All real estate licensees are invited to offer this property to prospective buyers. Do not offer to other agents without prior approval.

## Offices Serving The Central Valley

**FRESNO**  
7480 N Palm Ave, Ste 101  
Fresno, CA 93711  
559.432.6200

**VISALIA**  
3447 S Demaree Street  
Visalia, CA 93277  
559.732.7300

**BAKERSFIELD**  
1801 Oak Street, Ste 159  
Bakersfield, CA 93301  
661.334.2777



**Download Our Mobile App!**  
<http://snap.vu/oueq>

