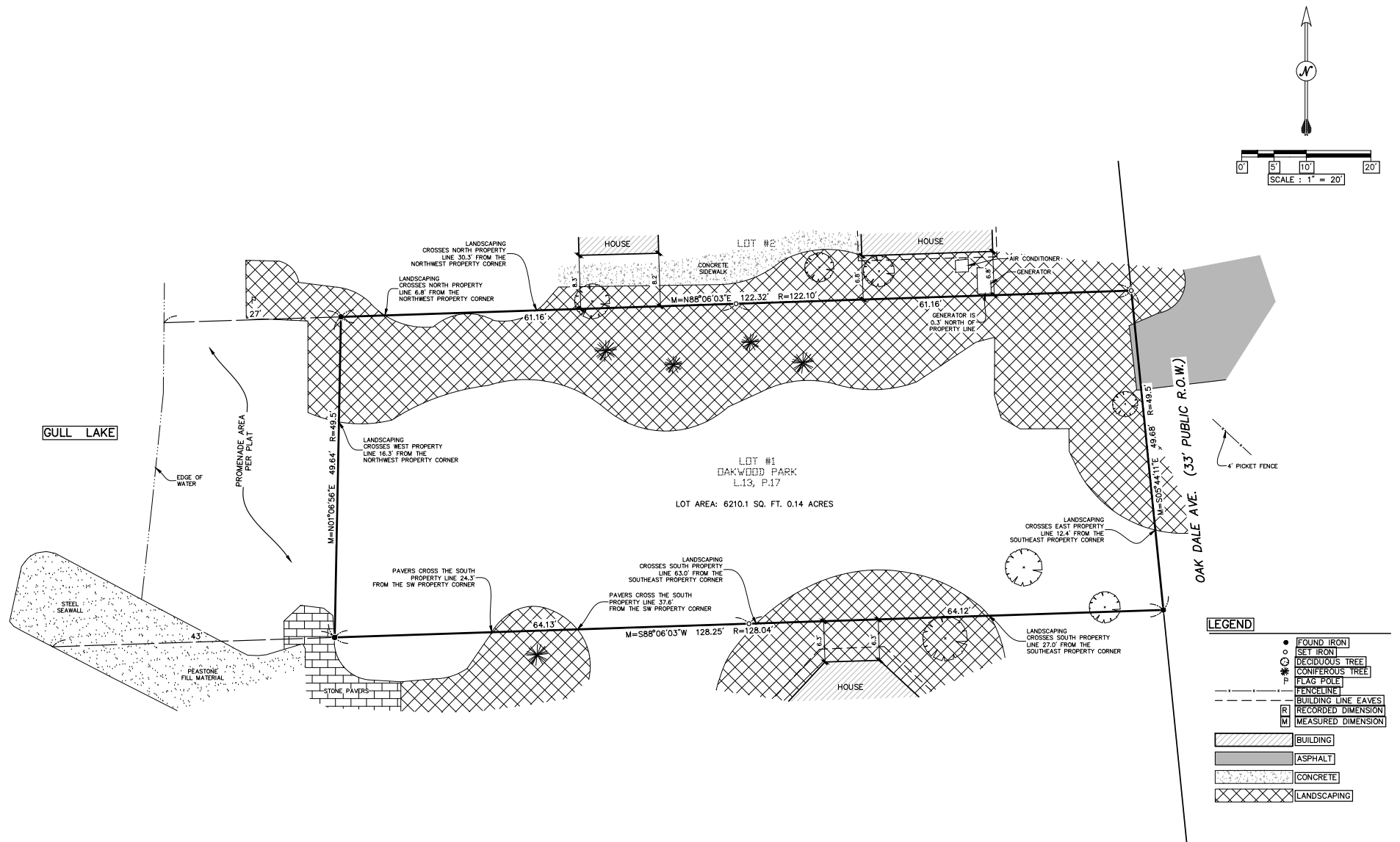


S:\DWG\271045.dwg - 10/24 - Oct. 04 2008 - 02:48pm



Description of Plats:  
According to the Plat and as recorded in Liber 13  
Recorded in 1913 at Plat No. 208 in Kalamazoo County  
Records, on Page 17; Kalamazoo County Records.

CHRISTOPHER A. KERSTEN  
PROFESSIONAL SURVEYOR NO. 53500

NO.	REVISIONS	BY	DATE	Drawn By : S.J.V.	Project No. 2170445
				Checked By : C.A.K.	Date : 10/4/18 [Sheet] 1 [Of] 1
<b>Prein &amp; Newhof</b> Engineers - Surveyors - Environmental - Laboratory 743 Stadium Drive Kalamazoo, MI 49009 Phone: (269) 372-1158 Fax: (269) 372-3444 info@preinnewhof.com				BOUNDARY SURVEY FOR EUGENE H. MCKAY III SECTION 7, TOWN 1 SOUTH, RANGE 9 WEST ROSS TOWNSHIP, KALAMAZOO COUNTY, MICHIGAN	