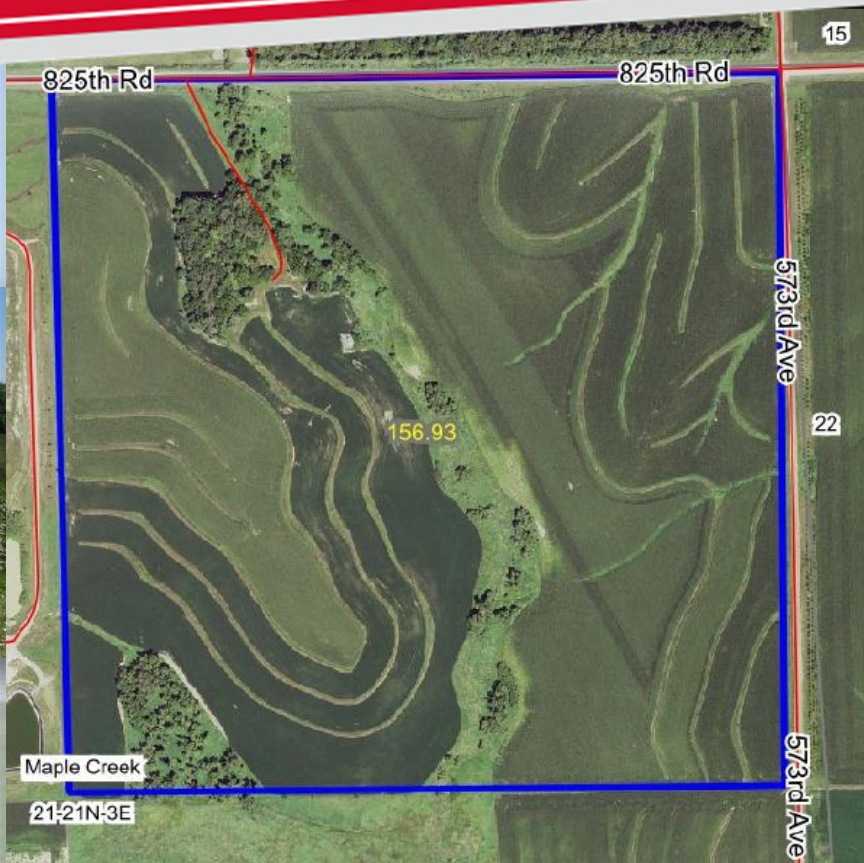


**FOR SALE!**

**160 Acres+/- Clarkson, NE**

This is a good productive dry land farm. There are 136.49 cropland acres with the balance of the land in trees and grass.



This farm is available  
for possession on  
January 1, 2019.

FSA data for 2019 crop year:

Farm Land: 157.03 CRP: 0

Cropland/DCP Crop Land: 136.49



	Base Acres	PLC Yield
Corn	68.60	133
Soybeans	67.50	37
Total	136.10	

Tract contains a wetland or  
farmed wetland.

**Contact us today!**

**DON KRACKE** 402-432-3462  
7990 SW 142nd RD DeWitt, NE 68341

[don@donaldkracke.com](mailto:don@donaldkracke.com) [www.donaldkracke.com](http://www.donaldkracke.com)

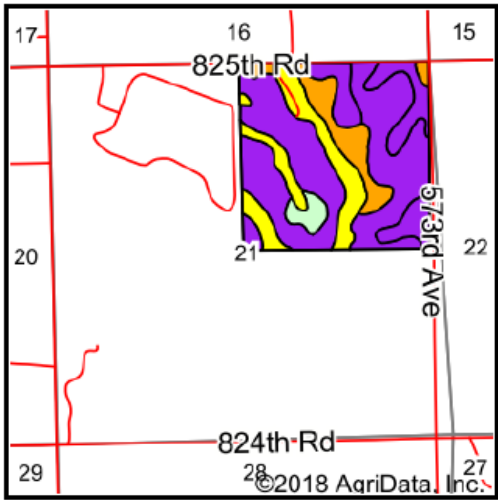
If you have a brokerage relationship with another agency, this is not intended as a solicitation. All Information deemed reliable but not guaranteed. Each office is independently owned and operated.

**KW KRACKE**  
REAL ESTATE Powered by  
KELLER WILLIAMS

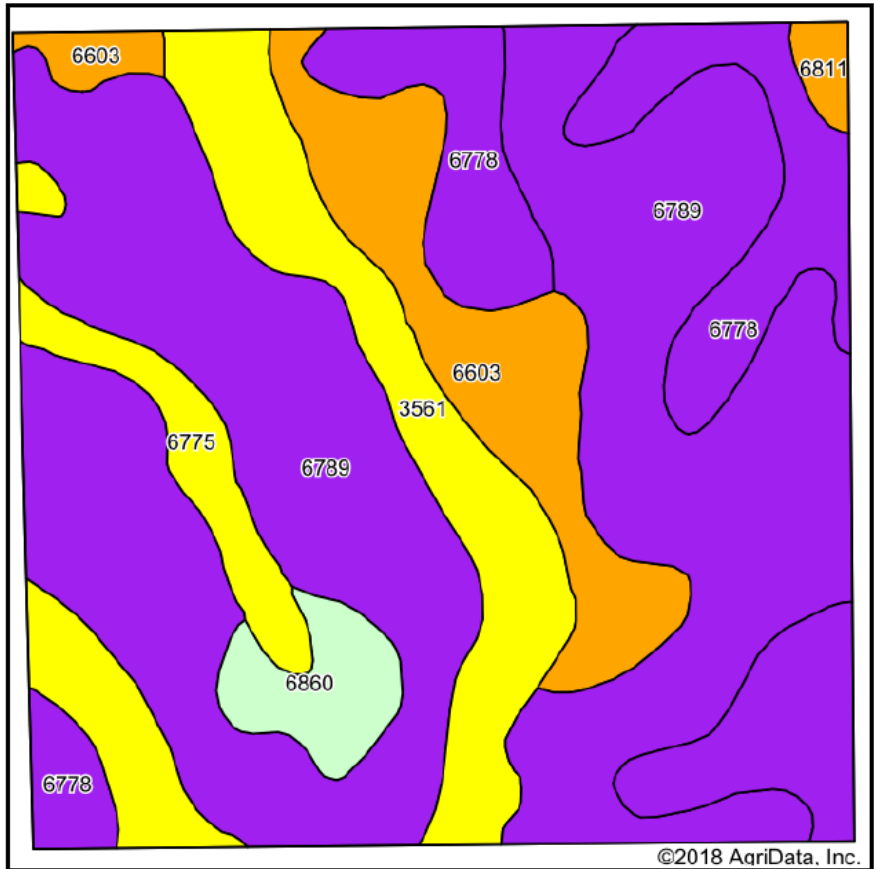




**FOR SALE**



State: **Nebraska**  
County: **Stanton**  
Location: **21-21N-3E**  
Township: **Maple Creek**  
Acres: **156.93**  
Date: **10/30/2018**



Soils data provided by USDA and NRCS.

Area Symbol: NE167, Soil Area Version: 18

Code	Soil Description	Acres	Percent of field	SRPG Legend	Non-Irr Class *c	Irr Class *c	SRPG	*n NCCPI Soybeans
6789	Crofton-Nora complex, 11 to 17 percent slopes, eroded	82.08	52.3%		IVe		51	57
6778	Nora-Crofton complex, 6 to 11 percent slopes, eroded	25.74	16.4%		IIIe	IVe	57	62
3561	Hobbs silt loam, 0 to 2 percent slopes, occasionally flooded, cool	21.00	13.4%		IIw	IIw	69	73
6603	Alcester silty clay loam, 2 to 6 percent slopes	16.58	10.6%		IIe	IIIe	73	70
6775	Nora-Crofton complex, 2 to 6 percent slopes, eroded	5.68	3.6%		IIe	IIIe	61	63
6860	Crofton silt loam, 8 to 17 percent slopes, eroded	4.71	3.0%		IVe			50
6811	Moody silty clay loam, 2 to 6 percent slopes	1.14	0.7%		IIe	IIIe	74	73
<b>Weighted Average</b>							<b>55.7</b>	<b>*n 61.5</b>

**Selling Price: \$960,000     2017 RE Taxes: \$6,398.46**

**Are you or someone you know looking for a property like this? Donald Kracke is an Accredited Land Consultant ALC working with agricultural clients throughout the United States. We are licensed in Iowa, Kansas, Missouri, Nebraska and South Dakota.**



***DON KRACKE*** 402-432-3462  
7990 SW 142nd RD DeWitt, NE 68341

don@donaldkracke.com    www.donaldkracke.com

If you have a brokerage relationship with another agency, this is not intended as a solicitation. All information deemed reliable but not guaranteed. Each office is independently owned and operated.