



5880 NC HWY 90E
Hiddenite, NC 28636

3 Bedrooms ♦ 2 Bathrooms ♦ Full Brick Ranch ♦ 29.35 Acres
8+ Stall Barn ♦ Arena ♦ Mobile Home



Breedlove
FARMS ★ ESTATES ★ LAND
POWERED BY
exp
REALTY

Jo Zarnoch
704-400-1701

horseloverjoz@breedlovecarolinas.com
www.breedlovefarmsestatesandland.com



5880 NC Highway 90 E, Hiddenite, NC 28636

If you enjoy pleasurable trail riding and also are nostalgic about old TV westerns, this property could be for you. Only 20 minutes from Love Valley, NC, a western town of the past with hitching posts and stoops where cowboys and cowgirls rest under. You will feel like you are in the middle of a John Wayne setting with miles of trail riding and fun.

If, on the other hand, you like equestrian riding, this area is for you. Many equestrian centers are nearby, as well as antique shops and shopping. You can also enjoy riding in your own sand arena included in the 29+ acre farm.

Want to train or board? The barn is currently 8 stalls and could be easily modified to 12 with its own office and bath, center aisle, wash stall, and tack. Former owners housed the caisson horses for the area, and because of this, barn is extremely well done.

In addition to all the above the farm is also close to Emerald Hollow Mine which is the only emerald mine in the world open to the public for mining. Each year thousands of visitors flock to this Brushy Mountain attraction to experience the thrill of finding gems.

Swimming, boating, lounging your thing? You are only 30 minutes from Lake Norman and Lake Norman State Park for hiking, enjoying the sand and boating.

The property itself has acres of pastures, mature oak and fruit trees, with plenty of room for parking. The barn can be seen from the rear windows of the solid brick ranch home, and horses graze nearby.

This is a gem, no pun intended, and offers the buyer many possibilities, including boarding, hobby farming, or lessons. You choose, and come visit this rare find.

Aerial View of 5880 HWY 90E



PID # 378836248 ♦ 20.38 Acres

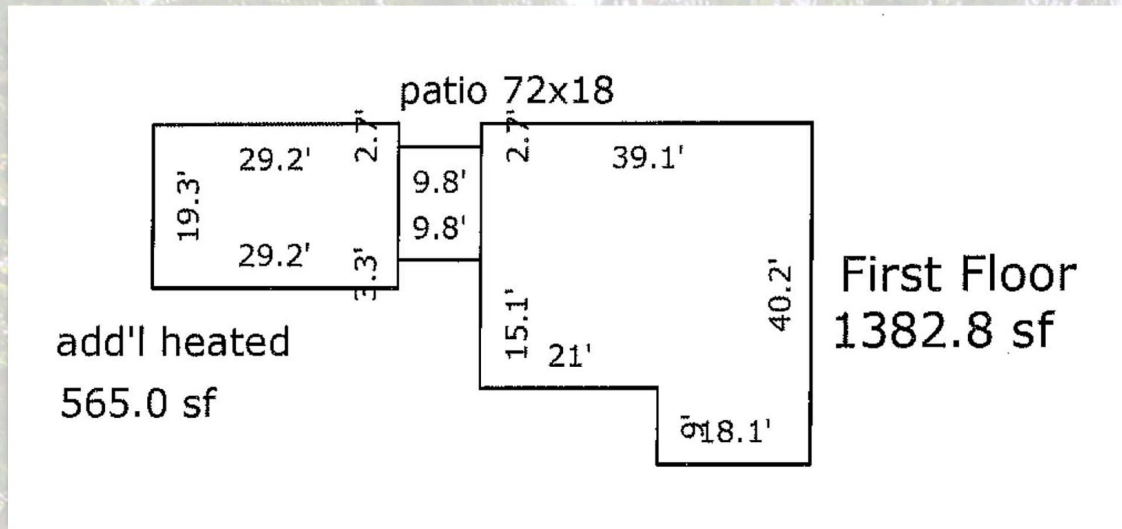
PID # 378826943 ♦ 4.16 Acres

PID # 3788366478 ♦ 1.2 Acres

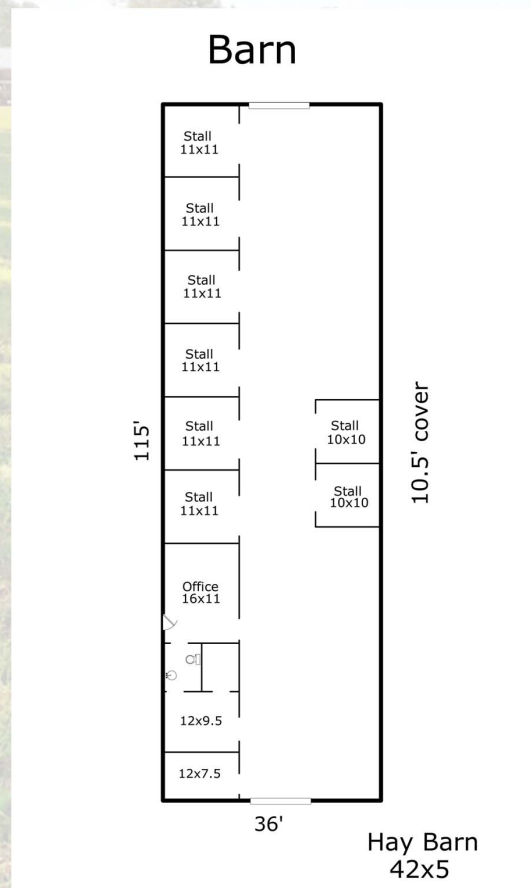
PID # 3788367119 ♦ 3.79 Acres

Total 29.35 Acres

Floor Plan



Main House ♦ 1,383 Sq ft.



Interior Features

New Laminate Flooring Throughout
Except for One Bedroom

Freshly Painted Neutral Interior

Living Room with Wood Burning Brick
Fireplace with Raised Hearth,
Recessed Lighting
& Pass-Thru to Kitchen

Extensive Trimwork & Molding

Kitchen with Generous Oak Cabinetry

Custom Center Island Breakfast Bar
with Storage

Bosch Dishwasher

Electric Glasstop Range with
Exhaust Hood

Split Bedroom Floor Plan



Interior Features

Bedroom 2 with Wall to Wall Carpeting
& 2 Closets



Walk-In Closet with Built-In Oak Desk
& Cabinetry



Guest Bathroom with Custom Cabinetry,
Vanity with Sink, Dressing Vanity,
Linen Closet & Shower/Tub
Combo



Bedroom 3 with French Door Access
to Back Patio



Laundry Room with Utility Sink



Master Bedroom Suite

Sunroom Connects Main Living Area
to Master Bedroom Suite

Separate Handicap Accessible Entrance

Wood Burning Brick Fireplace with
Raised Hearth

Custom Built-Ins

Large Walk-In Closet

Separate Heating & Air

Full Bathroom with Claw Foot Tub
& Linen Closet



Exterior Features

All Brick Ranch with Decorative
Shutters



Stone Front Walkway



Vinyl Windows

Professional Landscaping



Private Side Entrance

Rear Carport



Blacktop Driveway to Carport

20' x 45' Raised Rear Patio



New Septic System in 2011

Mobile Home



Can be Used as Office, Lounge
or Guest Quarters



Living Room



Kitchen

Dining Room

1 Bedroom



Full Bathroom with Shower/Tub
Combo

Laundry



Barn

Remodeled in 2011

Hardiboard & Cinderblock Exterior

Large Sliding End Doors for Cross Breeze

Flame Retardant Coating & Paint
on Framing & Rafters

100' Run-In Shed on Back Side

Automatic Industrial Fan
Temperature Activated

4 Bay Hay Barn Provides Storage for
Hay Bales & Farm Equipment



Barn

8 Stalls with Mats, Hay Racks & Insulated
Water Troughs with Faucets

Room for 3-4 More Stalls

Electricity at Each Stall

Wash Stall with Hot & Cold Water

Tack Room ♦ Feed Room

½ Bathroom ♦ Heated Office

Tongue and Groove Pine and Cedar Walls

Fluorescent Lighting

Hay Loft



Farm Features

29.35 Acres

Gently Rolling Pastures

One Paddock

Two Fenced Pastures

Four & Five Strand Rubber
Coated High Tensil
Fencing

Hay Fields

Arena with Sand Footing

5 Acres of Mature Hardwoods

Large Oak Trees Provide Shade

Pear & Walnut Trees

20 Minutes to Love Valley

30 Minutes to Mooresville

70 Minutes to Charlotte Douglas
International Airport

