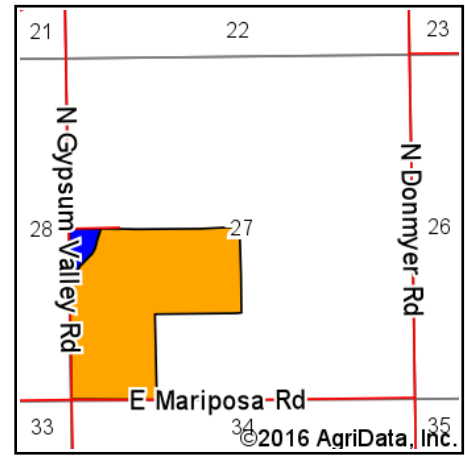
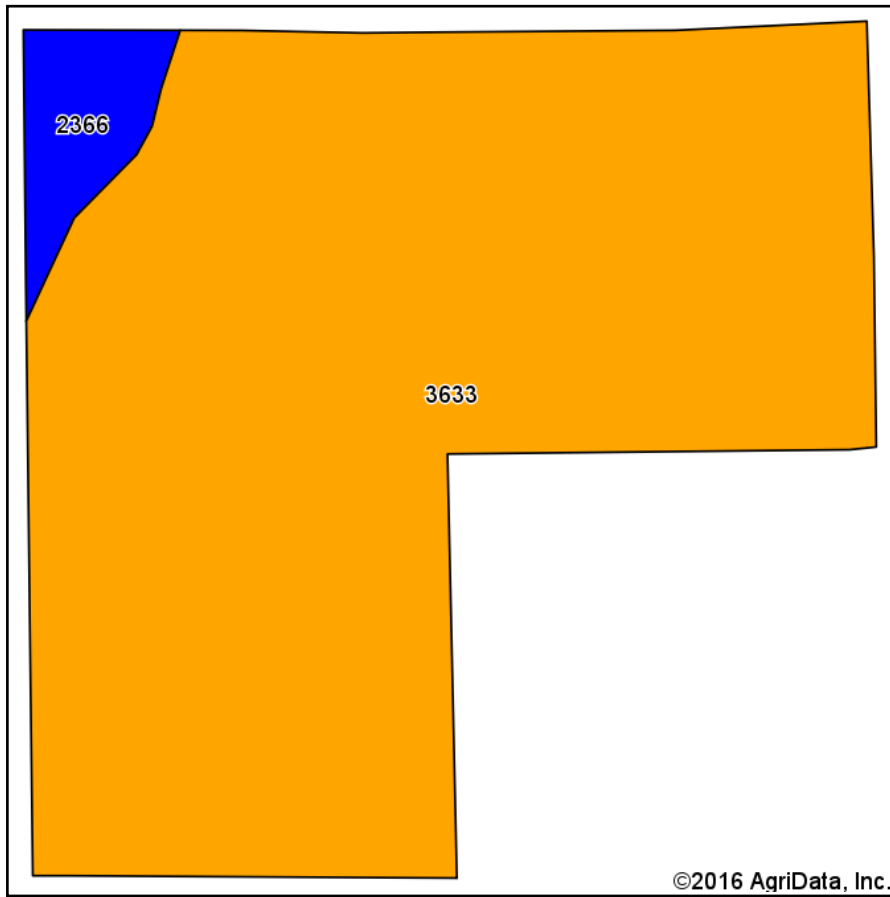


Soils Map



State: **Kansas**
 County: **Saline**
 Location: **27-13S-1W**
 Township: **Dayton**
 Acres: **119.1**
 Date: **7/16/2016**



ANTRIM-PIPER
WENGER REALTORS®

Maps Provided By:



© AgriData, Inc. 2016

www.AgriDataInc.com



Area Symbol: KS169, Soil Area Version: 12

Code	Soil Description	Acres	Percent of field	Non-Irr Class Legend	Non-Irr Class *c	Irr Class *c
3633	Sutphen silty clay, occasionally flooded	113.63	95.4%		IIIw	IIIw
2366	New Cambria silty clay, rarely flooded	5.47	4.6%		IIs	IIs

Area Symbol: KS169, Soil Area Version: 12

*c: Using Capabilities Class Dominant Condition Aggregation Method

Soils data provided by USDA and NRCS.