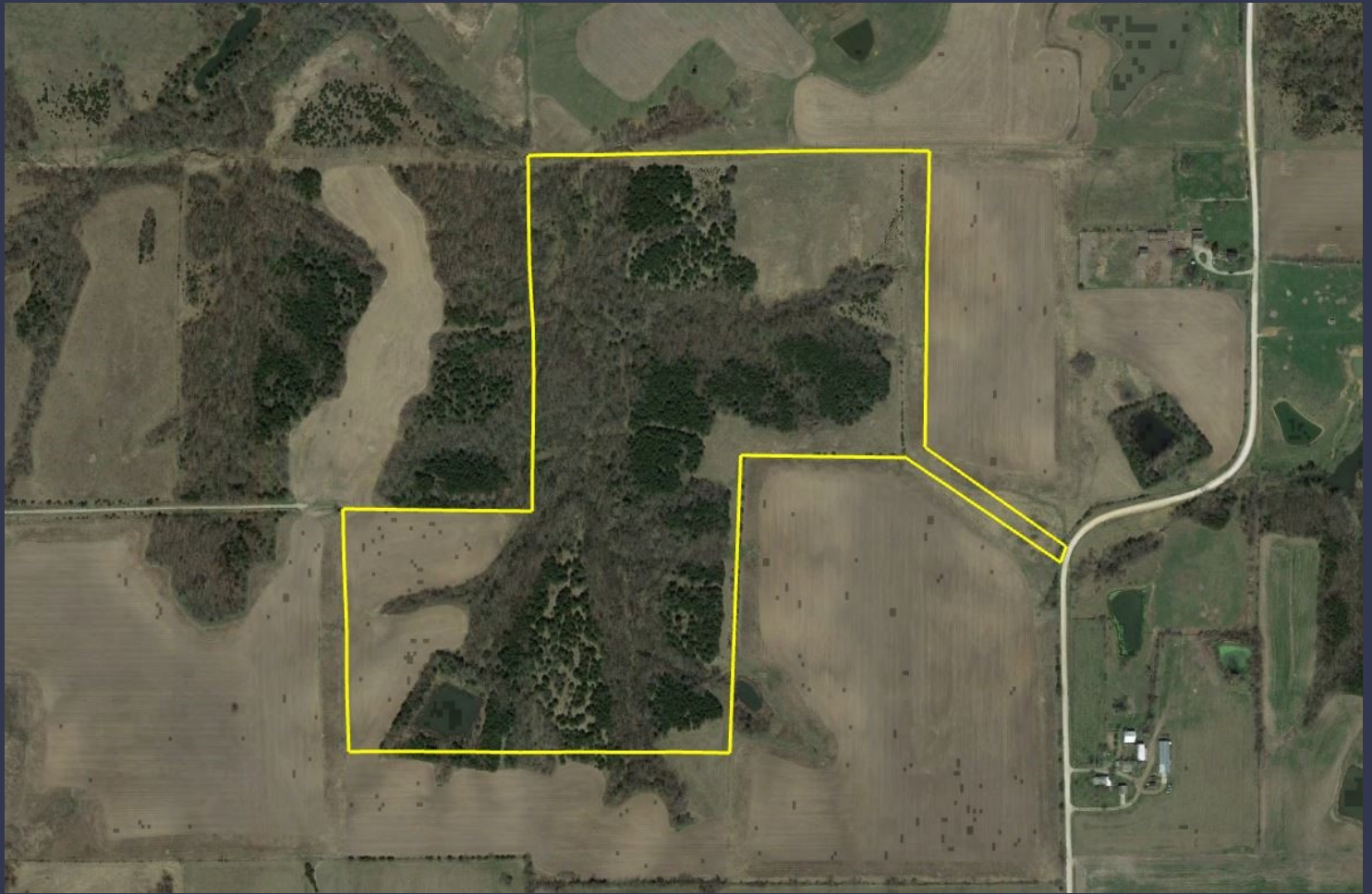


# Wapello County Land for Sale

## 180th Avenue, Blakesburg, IA 52536

74 Acres

\$220,150 (\$2975/ac)



1010 South Clinton, PO Box 236 Albia, IA 52531

Phone: 641-932-7796

Email: [hawkeye@uciowa.com](mailto:hawkeye@uciowa.com)

On the web: [www.uciowa.com](http://www.uciowa.com)

"Serving Southern Iowa & Northern Missouri"

Alan Ammons, Broker, Licensed in Iowa & Missouri. All Agents Licensed in Iowa.

**Hawkeye  
Farm Mgmt &  
Real Estate**

Nate Ammons, Realtor®  
(641) 777-2861, [nate@uciowa.com](mailto:nate@uciowa.com)

Ryan Ammons, Broker Associate  
(641) 777-2955, [ryan@uciowa.com](mailto:ryan@uciowa.com)

Alan Ammons, Broker  
(641) 777-6927, [alan@uciowa.com](mailto:alan@uciowa.com)



The above information, although believed to be correct, is not warranted or guaranteed by the owner, listing firm, or listing agent.



**This property offers great opportunity for anyone looking for top-end trophy hunting or recreational property.**

Quality whitetail and turkey hunting tract located in a great neighborhood of Wapello County IA. This 74 acre whitetail and turkey haven lays in the middle of a large section of quality habitat and offers heavy cover, seasonal



creek, diverse terrain, established food plots and established trails with multiple stand locations. With CRP native grass, pasture and cropland surrounding, this tract offers bedding cover and is a major travel corridor to and from food sources for a hefty trophy whitetail herd. This Wapello County hunting property is hammered with deer sign throughout and offers opportunity for other local game. This Iowa hunting land also offers a great place for an off-grid cabin with plenty of room to play for any recreational buyer or avid outdoorsman. Established tracts of Iowa hunting land and recreational land in Wapello County, near Ottumwa and Blakesburg are hard to come by. This property offers great opportunity for anyone looking for top-end trophy hunting or recreational property. Estimated Taxes of \$1,197 2018/19 payable.

