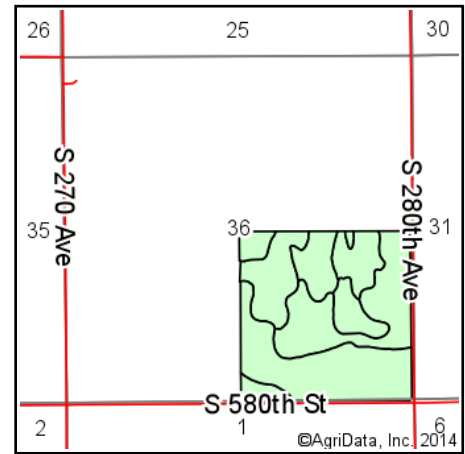
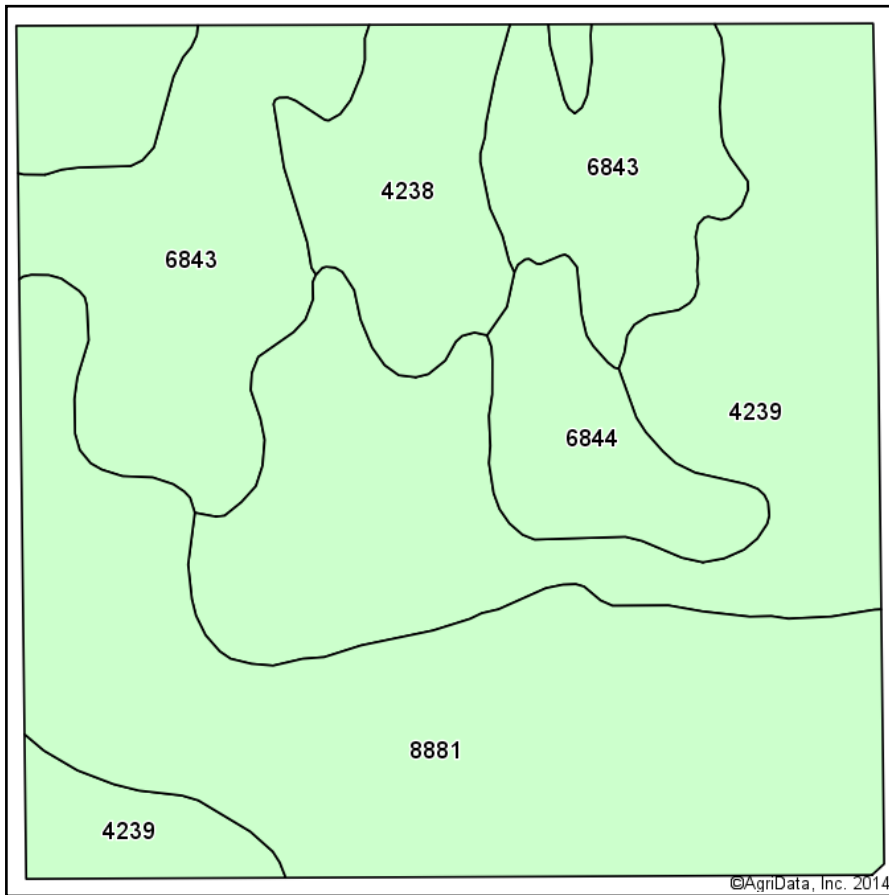
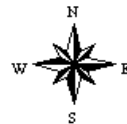


Soil Map



State: **Nebraska**
 County: **Nance**
 Location: **36-16N-6W**
 Township: **West Newman**
 Acres: **155**
 Date: **5/26/2014**



Maps Provided By:

 CUSTOMIZED ONLINE MAPPING
 © AgriData, Inc. 2014 www.AgriDataInc.com

Area Symbol: NE125. Soil Area Version: 11

Code	Soil Description	Acres	Percent of field	Non-Irr Class	Irr Class	SRPG	Alfalfa hay Irrigated	Corn Irrigated	Oats	Pasture	Rye	Winter wheat
4239	Ord variant very fine sandy loam, 0 to 1 percent slopes	51.97	33.5%		IIw	51	5.6	138	64	2	30	42
8881	Hord very fine sandy loam, imperfectly drained, 0 to 1 percent slopes	49.37	31.9%		IIw	67	5.6	163	64	2	30	42
6843	Ortello fine sandy loam, 1 to 3 percent slopes	32.52	21.0%		Ile	53	3.5	113	56	3	25	42
4238	Ord variant fine sandy loam, 0 to 1 percent slopes	11.90	7.7%		IIw	51	4.9	125	64	2	30	35
6844	Ortello fine sandy loam, 1 to 3 percent slopes, eroded	9.24	6.0%		Ile	50	3.5	100	48	3	20	28
Weighted Average						56.5	5	137.5	61.4	2.3	28.4	40.6

Area Symbol: NE125, Soil Area Version: 11

Field borders provided by Farm Service Agency as of 5/21/2008. Aerial photography provided by Aerial Photography Field Office.