



Silver Pines

+/-147 Acres

Edwards County, TX



Located in south-central Edwards county End of the road, very secluded

4/2, +/-1500sf, newly constructed lodge built on the hilltop

20x60 wrap-around deck offering spectacular views of the Texas hill country

water & electricity

furnishings & appliances

central heat and air

Road system throughout the ranch allowing access to numerous hunting areas

Heavily wooded with a mixture of oak, cedar and beautiful pinon pines

Rolling to rolling-steep terrain

Joins large, low fenced ranch on south side of property

No neighboring ranches smaller than 150 acres

Hunting is some of the best the hill country has to offer!

Trophy whitetail, turkey, hog, axis, aoudad, elk, blackbuck antelope

Contains 4 bow stands, 4 box stands, 5 corn feeders, 3 protein feeders

Wildlife exempt taxes

Set up and ready to enjoy immediately!

Additional acreage available \$375,000 listing #130

Western Hill Country Realty

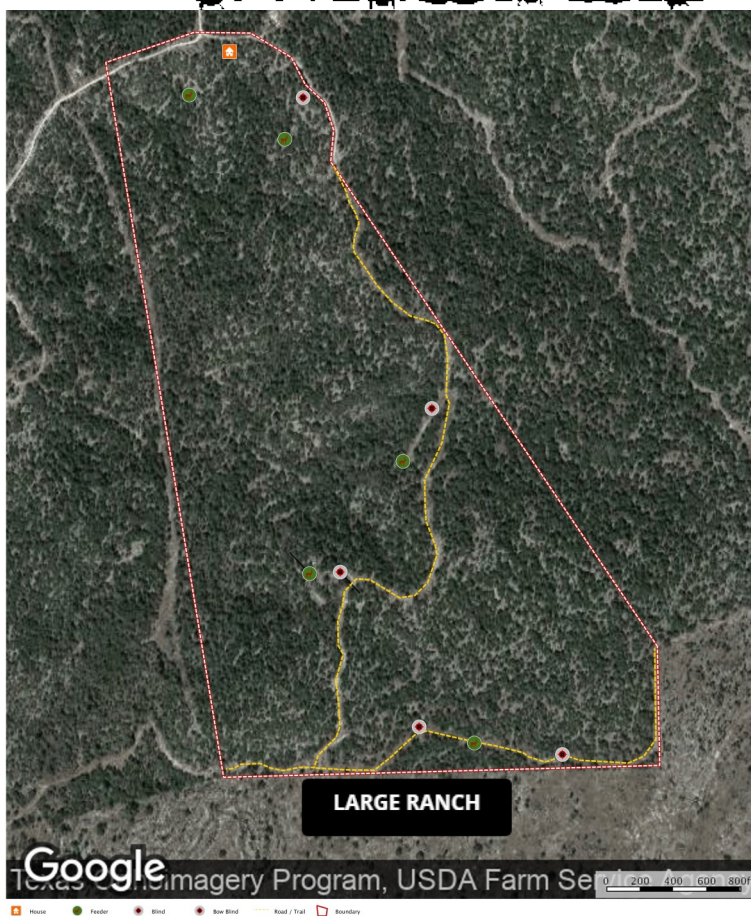
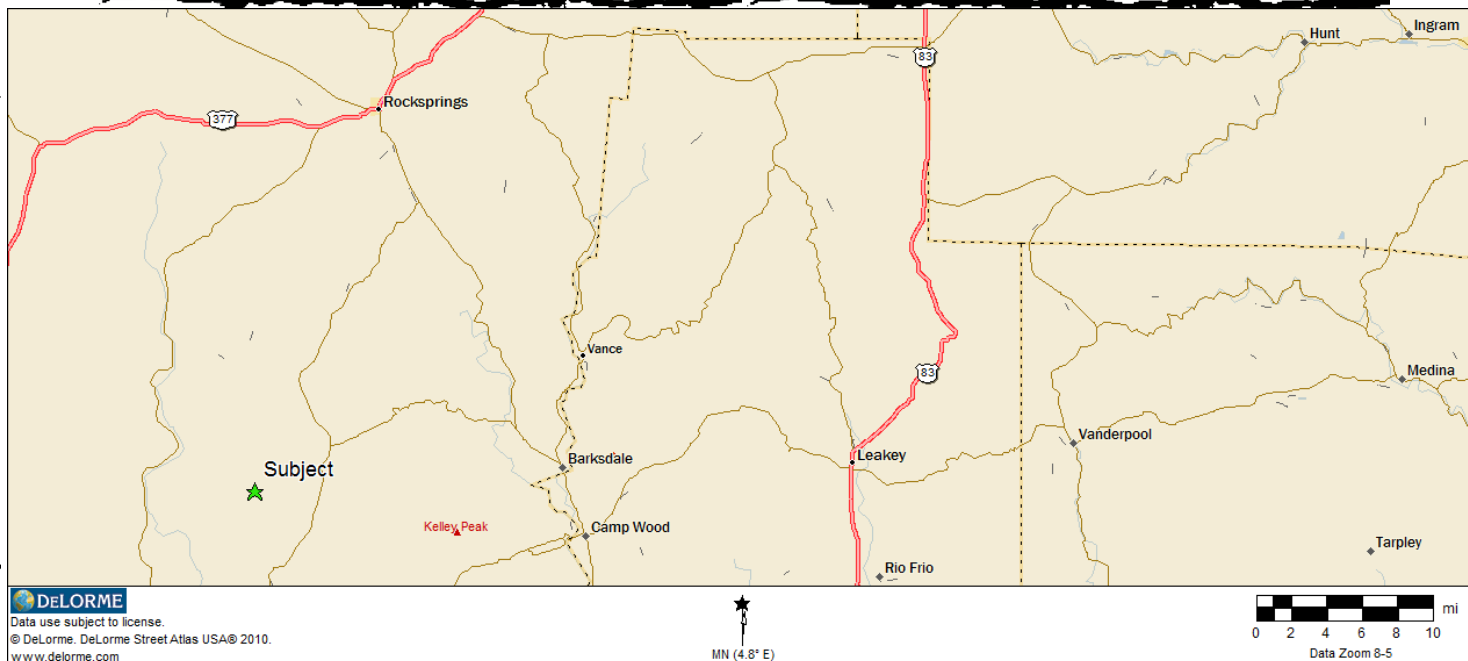
www.westernhillcountryrealty.com

info@westernhillcountryrealty.com

830-683-4435



Silver Pines +/-147 Acres Edwards County, TX



Western Hill Country Realty

www.westernhillcountryrealty.com

info@westernhillcountryrealty.com

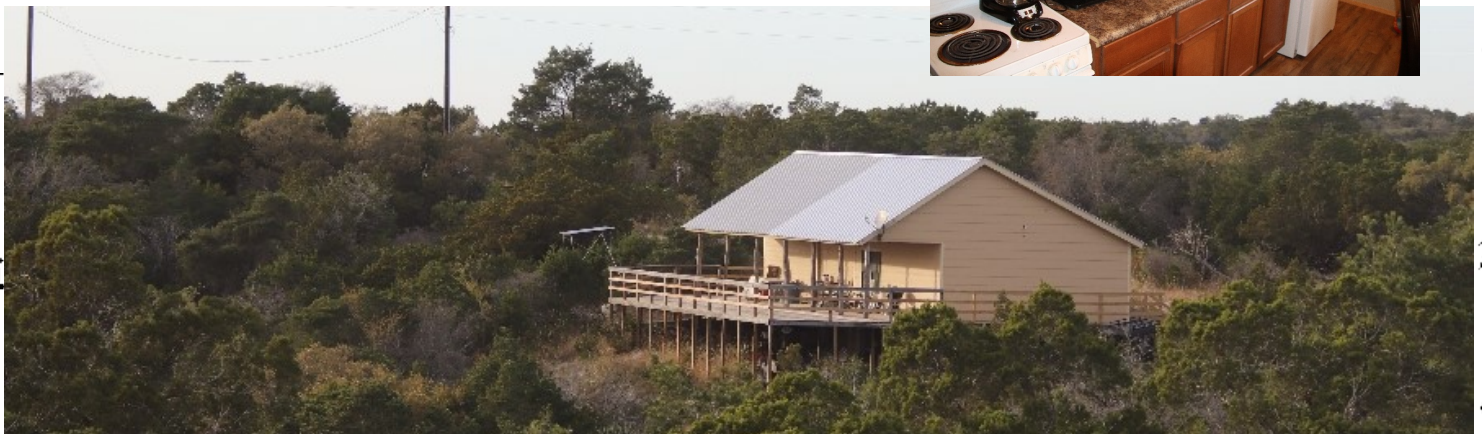
830-683-4435



Silver Pines

+/-147 Acres

Edwards County, TX



Western Hill Country Realty

www.westernhillcountryrealty.com

info@westernhillcountryrealty.com

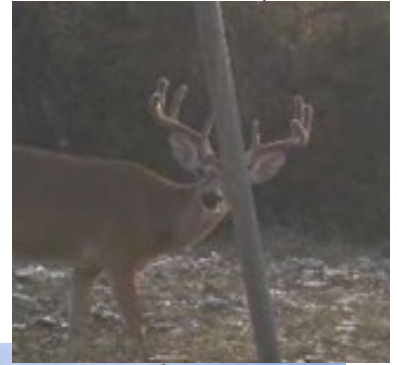
830-683-4435



Silver Pines

+/-147 Acres

Edwards County, TX



Western Hill Country Realty

www.westernhillcountryrealty.com

info@westernhillcountryrealty.com

830-683-4435