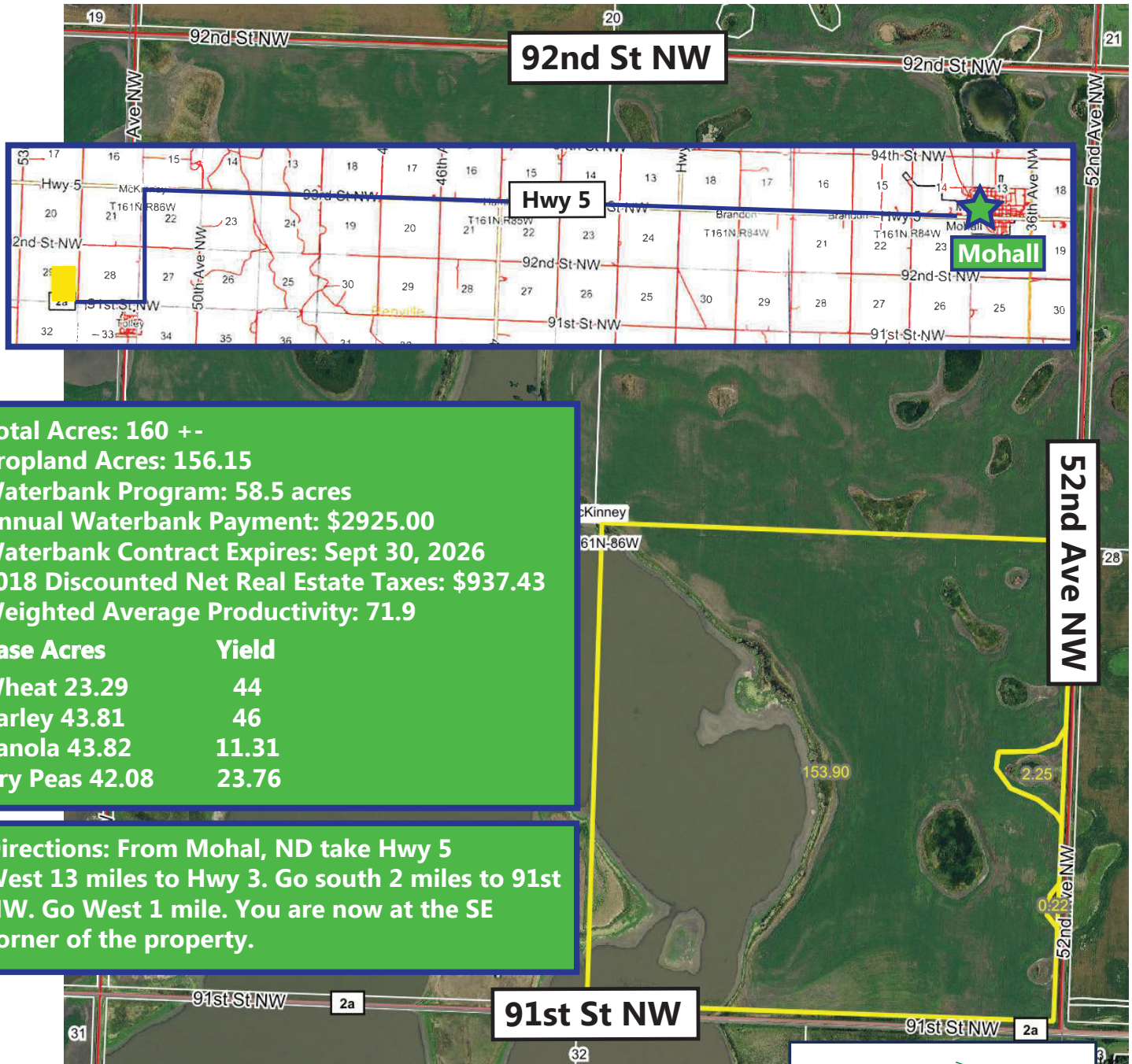


# For Sale Renville County Farmland

## SE 1/4 Section 29-161-86

### Approximately 160.00 Acres +-



**Total Acres: 160 +-**  
**Cropland Acres: 156.15**  
**Waterbank Program: 58.5 acres**  
**Annual Waterbank Payment: \$2925.00**  
**Waterbank Contract Expires: Sept 30, 2026**  
**2018 Discounted Net Real Estate Taxes: \$937.43**  
**Weighted Average Productivity: 71.9**

Base Acres	Yield
Wheat 23.29	44
Barley 43.81	46
Canola 43.82	11.31
Dry Peas 42.08	23.76

**Directions: From Mohal, ND take Hwy 5 West 13 miles to Hwy 3. Go south 2 miles to 91st NW. Go West 1 mile. You are now at the SE corner of the property.**



\*All information contained herein is believed to be true but should be verified to the buyer's satisfaction in case of error, typographical or otherwise. ALL information is subject to change without further notice.

**Steve D. Johnson**  
 Real Estate Broker  
 Auctioneer License #976  
 701-799-5213  
[steve@johnsonauctionandrealty.com](mailto:steve@johnsonauctionandrealty.com)

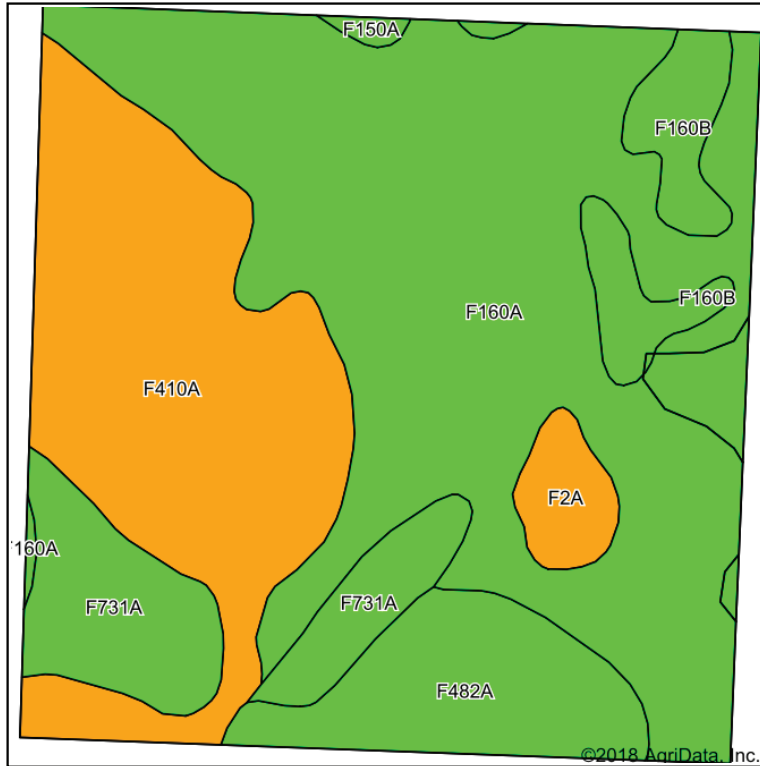


3137 32nd Ave S, Ste 211 | Fargo, ND 58103  
[www.johnsonauctionandrealty.com](http://www.johnsonauctionandrealty.com)

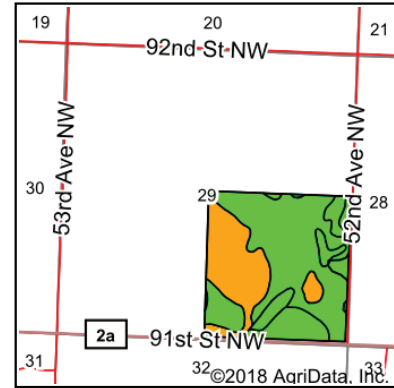
# For Sale Renville County Farmland

## SE 1/4 Section 29-161-86

### Approximately 160.00 Acres +-



Soils data provided by USDA and NRCS.



State: **North Dakota**  
 County: **Renville**  
 Location: **29-161N-86W**  
 Township: **McKinney**  
 Acres: **156.37**  
 Date: **12/5/2018**



Maps Provided By:



**surety**  
 CUSTOMIZED ONLINE MAPPING  
 © AgriData, Inc. 2018 www.AgriDataInc.com



Area Symbol: ND075, Soil Area Version: 21

Code	Soil Description	Acres	Percent of field	PI Legend	NonIrr Class *c	Productivity Index	*n NCCPI Overall
F160A	HamletSouris loams, 1 to 3 percent slopes	77.95	49.8%		IIc	85	51
F410A	Fargo silty clay, 0 to 1 percent slopes	38.88	24.9%		IVw	40	41
F731A	Swenoda fine sandy loam, 0 to 3 percent slopes	14.32	9.2%		IIIe	76	46
F482A	Great BendOverly silt loams, 0 to 2 percent slopes	13.31	8.5%		IIc	85	60
F160B	HamletSouris loams, 1 to 5 percent slopes	7.62	4.9%		Ile	81	51
F2A	Tonka silt loam, 0 to 1 percent slopes	3.54	2.3%		IVw	42	56
F150A	HamletTonkaWyard complex, 0 to 3 percent slopes	0.75	0.5%		IIc	73	56
<b>Weighted Average</b>						<b>71.8</b>	<b>*n 49</b>

\*n: The aggregation method is "Weighted Average using major components"

\*c: Using Capabilities Class Dominant Condition Aggregation Method

Soils data provided by USDA and NRCS.



\*All information contained herein is believed to be true but should be verified to the buyer's satisfaction in case of error, typographical or otherwise. All information is subject to change without further notice.

**Steve D. Johnson**  
 Real Estate Broker  
 Auctioneer License #976  
 701-799-5213  
 steve@johnsonauctionandrealty.com



3137 32nd Ave S, Ste 211 | Fargo, ND 58103  
 www.johnsonauctionandrealty.com