

**FOR SALE**



**PEARSON  
REALTY**

AGRICULTURAL PROPERTIES  
*A Tradition in Trust Since 1919*

# Lindsay Hillside Navels



**60± Assessed Acres  
Tulare County, California**

- Two Sources of Water
- Desirable Farming Location

**Exclusively Presented By:  
Pearson Realty**



**CALIFORNIA'S LARGEST AG BROKERAGE FIRM**

[www.pearsonrealty.com](http://www.pearsonrealty.com)

CA BRE #00020875



# Lindsay Hillside Navels

**60± Assessed Acres**

**\$1,550,000**

**DESCRIPTION:**

This property is planted to Fukumoto and Old Line navels on a southerly facing slope between the town of Lindsay and Round Valley. The sellers have drilled a new well on the southern end of the ranch in 2014.

**LOCATION:**

The property is located on the north side of Avenue 226, between Road 236 and Road 238.

**LEGAL:**

Tulare County APNs: 210-010-052 and 210-020-012  
The property is under the Williamson Act Contract.

**PLANTINGS:**

North Block	17.2+/- acres of Old Line navels, spaced 22x9 feet.
Middle Block	26.4+/- acres Fukumoto navels, spaced 20x8 feet.
South Block	13.2+/- acres Old Line navels, spaced 20x10 feet.

**WATER:**

Water is provided by Lindsay Strathmore Irrigation District meters 110 and 110A. There is also a well that was drilled in 2014 with an electrical submersible 20±HP pump producing approximately 121± gallons per minute.

**FROST CONTROL:**

There are two ground powered propane wind machines on the south block.

**SOILS:**

Porterville clay, 2 to 9 percent slopes.  
Cibo clay, lithic bedrock, 15 to 30 percent slopes, MLRA 18.  
Lewis clay loam.

**PRICE/TERMS:**

\$1,550,000. The growing crop is negotiable with reimbursement of farming expenses.



# ASSESSOR'S PARCEL MAP

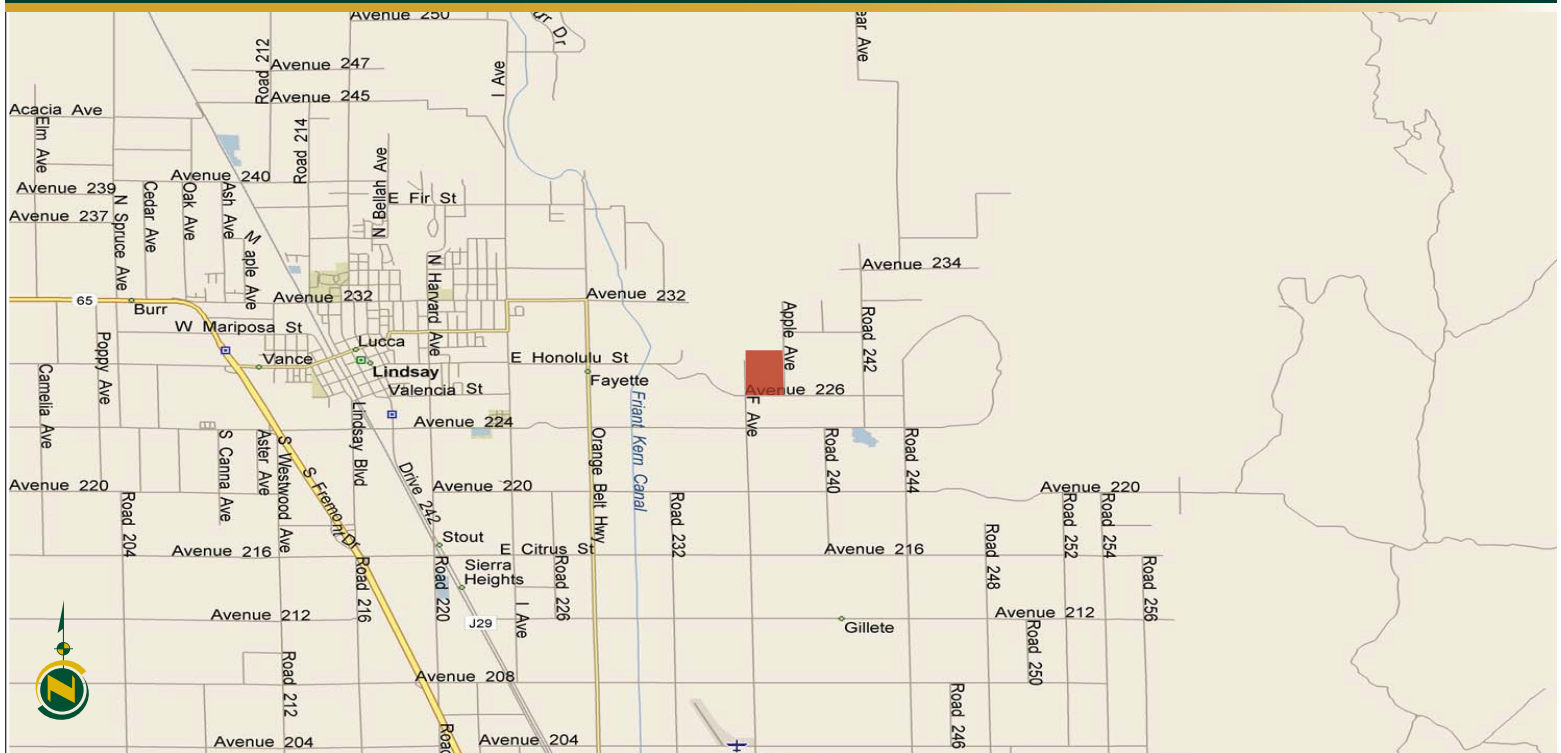


## AERIAL MAP



# SITE

## LOCATION MAP



## REGIONAL MAP



**Water Disclosure:** The Sustainable Groundwater Management Act (SGMA) was passed in 2014, requiring groundwater basins to be sustainable by 2040. SGMA requires a Groundwater Sustainability Plan (GSP) by 2020. SGMA may limit the amount of well water that may be pumped from underground aquifers. Buyers and tenants to a real estate transaction should consult with their own water attorney; hydrologist; geologist; civil engineer; or other environmental professional. Additional information is available at: California Department of Water Resources Sustainable Groundwater Management Act Portal - <https://sgma.water.ca.gov/portal/> Telephone Number: (916) 653-5791

### Offices Serving The Central Valley

#### FRESNO

7480 N Palm Ave, Ste 101  
Fresno, CA 93711  
559.432.6200

#### VISALIA

3447 S Demaree Street  
Visalia, CA 93277  
559.732.7300

#### BAKERSFIELD

1801 Oak Street, Ste 159  
Bakersfield, CA 93301  
661.334.2777



**Download Our  
Mobile App!**

<http://snap.vu/oue>



Download on the  
**App Store**



GET IT ON  
**Google Play**

We believe the information contained herein to be correct. It is obtained from sources which we regard as reliable, but we assume no liability for errors or omissions. Policy on cooperation: All real estate licensees are invited to offer this property to prospective buyers. Do not offer to other agents without prior approval.