



<u>Parcel Information</u>		<u>Assessment Information</u>	
Parcel #: R320503300		Market Value Land:	\$185,370.00
Account: 22754		Market Value Impr:	\$254,876.00
Related:		Market Value Total:	\$440,246.00
Site Address: 27005 NE Blackberry Ln Newberg OR 97132 - 6612		Assessed Value:	\$276,231.00
Owner: Jeffrey Grimm		<u>Tax Information</u>	
Owner2: Abra Faraon		Levy Code Area: 29.2	
Owner Address: 27005 NE Blackberry Ln Newberg OR 97132 - 6612		Levy Rate: 13.0872	
Twn/Range/Section: 03S / 02W / 05		Tax Year: 2017	
Parcel Size: 0.83 Acres (36,155 SqFt)		Annual Tax: \$3,623.27	
Plat/Subdivision: Cold Springs Fruit Park		Exemption Description:	
Lot:		<u>Legal</u>	
Block:		Township 3S Range 2W Section 05 TaxLot 03300	
Map Page/Grid: 713-D3			
Census Tract/Block: 030101 / 2116			
Waterfront:			

<u>Land</u>			
Cnty Land Use: 401 - Tract - Improved (typical of class)		Cnty Bldg Use: 12 - 1 Story with Basement	
Land Use Std: RMSC - RESIDENTIAL MISCELLANEOUS		Zoning: AF-10 - Rural Residential	
Neighborhood: RCH6		Recreation:	
Watershed: Chehalem Creek-Willamette River		School District: 29J Newberg School District	
Primary School: Mabel Rush Elementary School		Middle School: Mountain View Middle School	
High School: Newberg Senior High School			

<u>Improvement</u>			
Year Built: 1963	Attic Fin/Unfin: 0 SqFt / 0 SqFt		Fireplace: 1
Bedrooms: 3	Total Baths: 3.00		Full/Half Baths: 3 / 0
Total Area: 1,817 SqFt	Bsmt Fin/Unfin: 621 SqFt / 0 SqFt		Garage: 0 SqFt
Bldg Fin: 1,817 SqFt	1st Floor: 1,196 SqFt		2nd Floor: 0 SqFt

<u>Transfer Information</u>			
Loan Date: 6/29/2018	Loan Amt: \$30,000.00	Doc Num: 0000009086	Doc Type: Trust Deed- Deed of Trust
Loan Type: Variable	Finance Type:	Lender: BANNER BK	
Rec. Date: 4/11/2014	Sale Price: \$389,000.00	Doc Num: 2014-4057	Doc Type: Warranty Deed
Owner: GRIMM, JEFFREY H		Grantor: BRYSON, FREDERICK A	
Orig. Loan Amt: \$369,550.00		Title Co: TICOR TITLE	
Finance Type:	Loan Type:	Lender: EQUITY HOME MORTGAGE LLC	

Sentry Dynamics, Inc. and its customers make no representations, warranties or conditions, express or implied, as to the accuracy or completeness of information contained in this report.

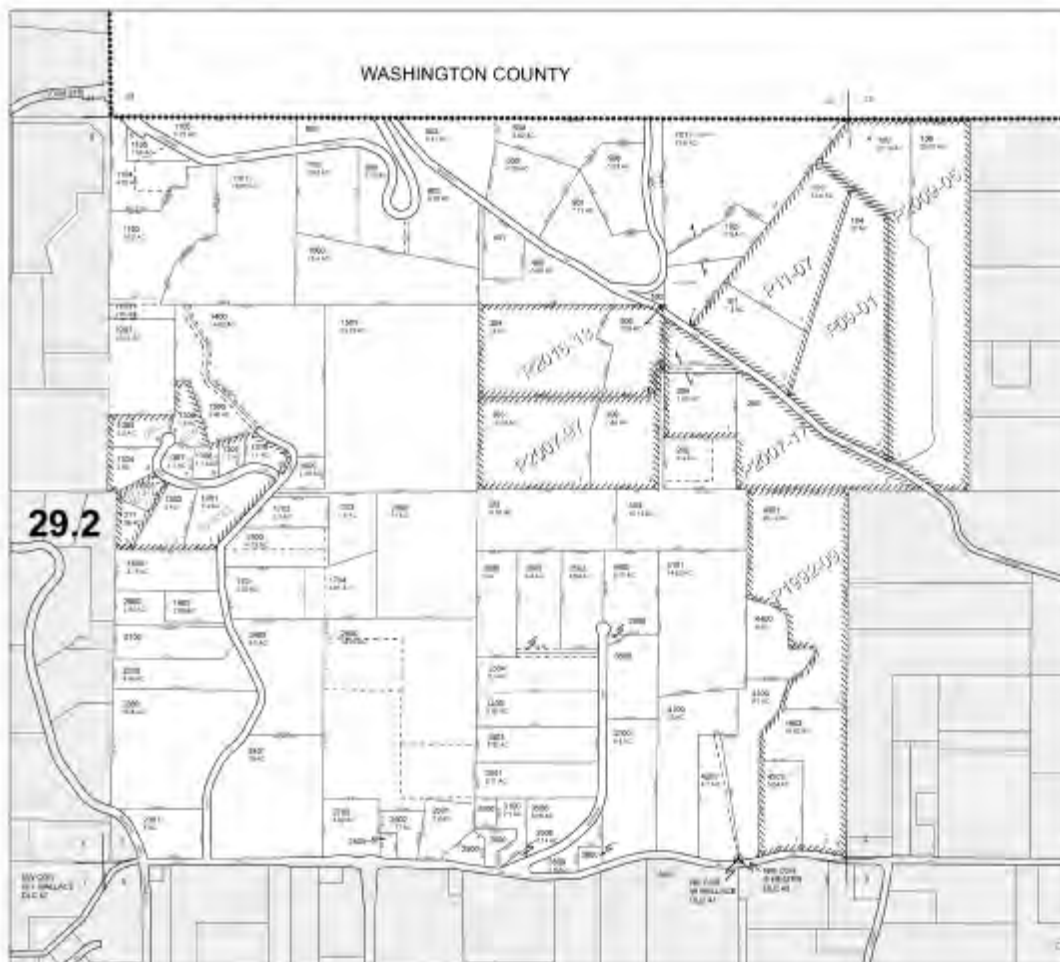


TICOR TITLE™

Parcel ID: R320503300

Sentry Dynamics, Inc. and its customers make no representations, warranties or conditions, express or implied, as to the accuracy or completeness of information contained in this report.

SECTION 5 T35 R2W W.M.
YAMHILL COUNTY OREGON
1" = 400'



3400-4000
 3400
 3300
 3200
 3100
 3000
 2900
 2800
 2700
 2600
 2500
 2400
 2300
 2200
 2100
 2000
 1900
 1800
 1700
 1600
 1500
 1400
 1300
 1200
 1100
 1000
 900
 800
 700
 600
 500
 400
 300
 200
 100
 0

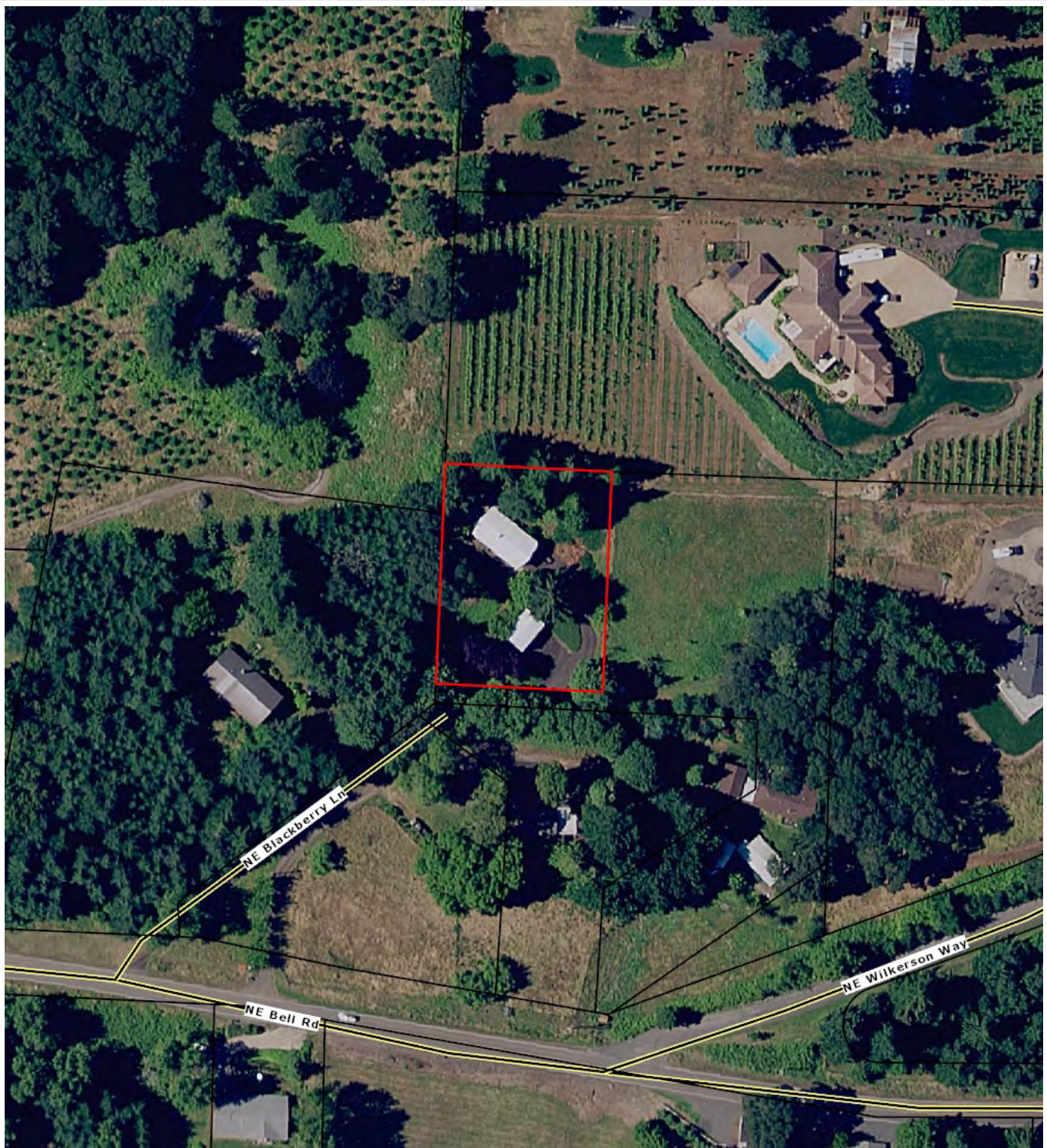
DATE PRINTED: 4/23/2018

This product is not a substitute for a physician's advice. It is not intended to treat, cure, or prevent any disease. It is not intended to be used in place of a medical diagnosis or treatment. It is not intended to be used in place of a medical consultation. It is not intended to be used in place of a medical examination. It is not intended to be used in place of a medical test. It is not intended to be used in place of a medical procedure. It is not intended to be used in place of a medical device. It is not intended to be used in place of a medical instrument. It is not intended to be used in place of a medical machine. It is not intended to be used in place of a medical equipment. It is not intended to be used in place of a medical supply. It is not intended to be used in place of a medical material. It is not intended to be used in place of a medical product. It is not intended to be used in place of a medical service. It is not intended to be used in place of a medical facility. It is not intended to be used in place of a medical institution. It is not intended to be used in place of a medical organization. It is not intended to be used in place of a medical association. It is not intended to be used in place of a medical society. It is not intended to be used in place of a medical group. It is not intended to be used in place of a medical network. It is not intended to be used in place of a medical system. It is not intended to be used in place of a medical program. It is not intended to be used in place of a medical plan. It is not intended to be used in place of a medical policy. It is not intended to be used in place of a medical protocol. It is not intended to be used in place of a medical procedure. It is not intended to be used in place of a medical device. It is not intended to be used in place of a medical instrument. It is not intended to be used in place of a medical machine. It is not intended to be used in place of a medical equipment. It is not intended to be used in place of a medical supply. It is not intended to be used in place of a medical material. It is not intended to be used in place of a medical product. It is not intended to be used in place of a medical service. It is not intended to be used in place of a medical facility. It is not intended to be used in place of a medical institution. It is not intended to be used in place of a medical organization. It is not intended to be used in place of a medical association. It is not intended to be used in place of a medical society. It is not intended to be used in place of a medical group. It is not intended to be used in place of a medical network. It is not intended to be used in place of a medical system. It is not intended to be used in place of a medical program. It is not intended to be used in place of a medical plan. It is not intended to be used in place of a medical policy. It is not intended to be used in place of a medical protocol.

3205



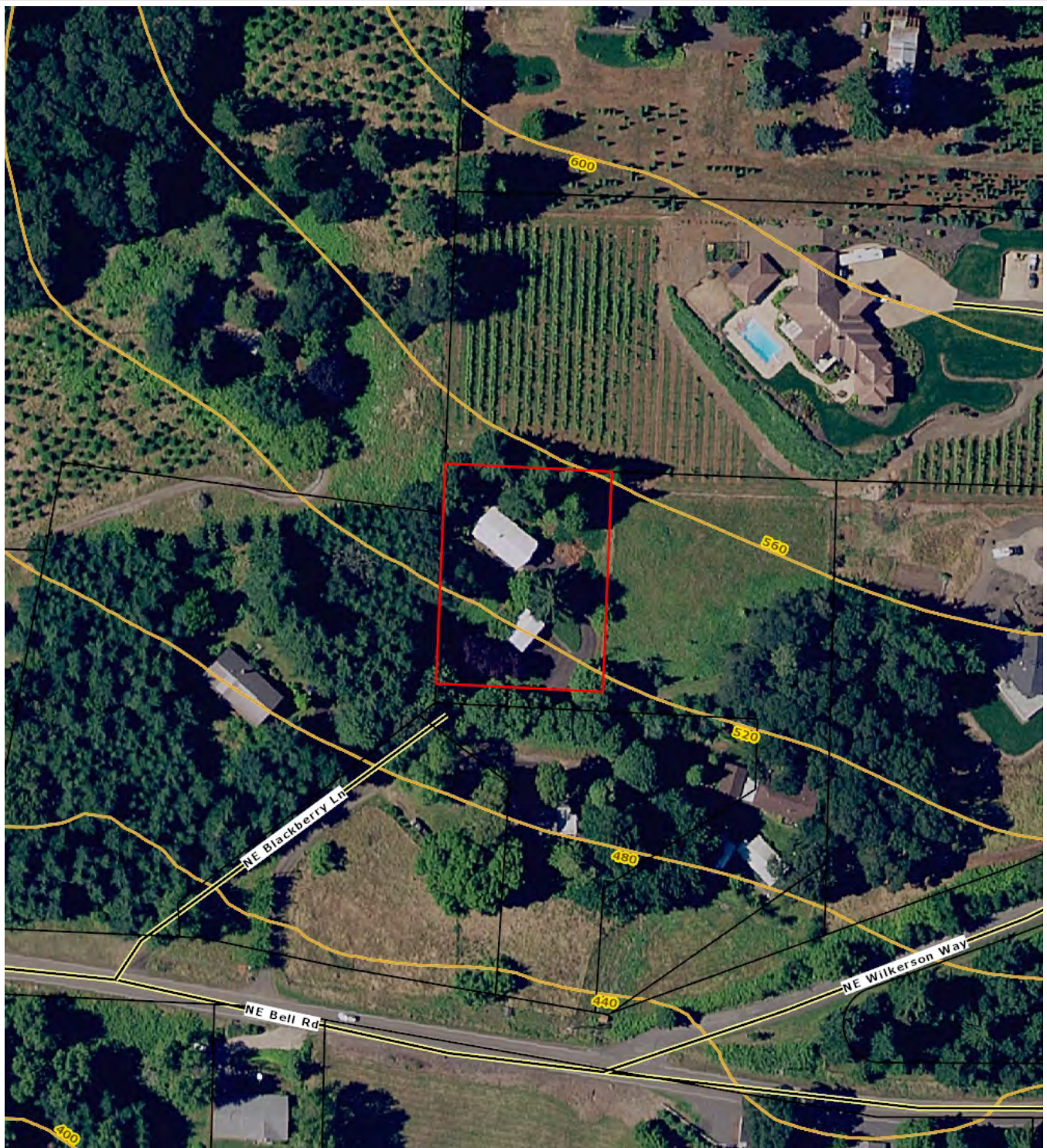
Sentry Dynamics, Inc. and its customers make no representations, warranties or conditions, express or implied, as to the accuracy or completeness of information contained in this report.



TICOR TITLE™

Parcel ID: R320503300

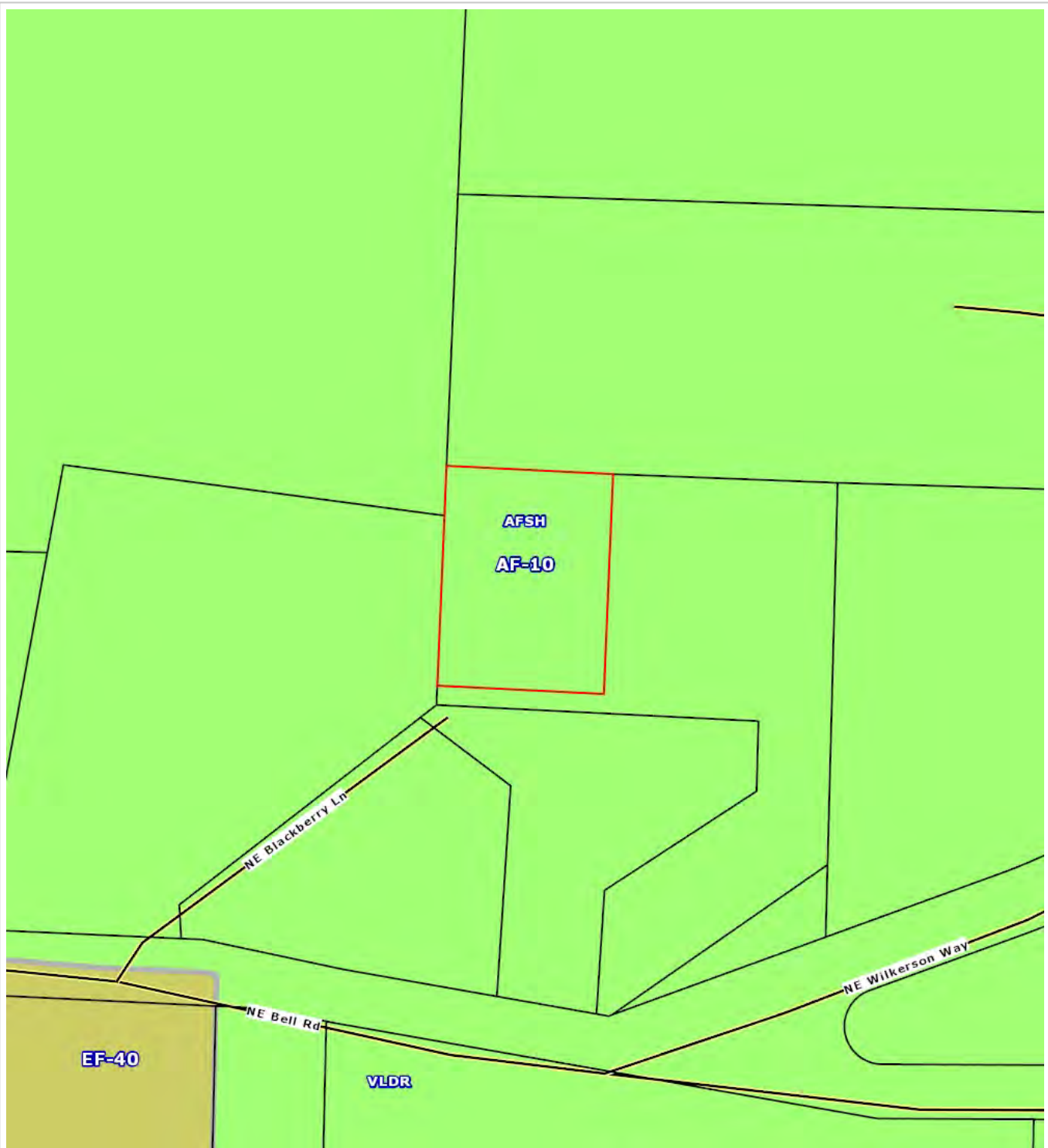
Sentry Dynamics, Inc. and its customers make no representations, warranties or conditions, express or implied, as to the accuracy or completeness of information contained in this report.



TICOR TITLE™

Parcel ID: R320503300

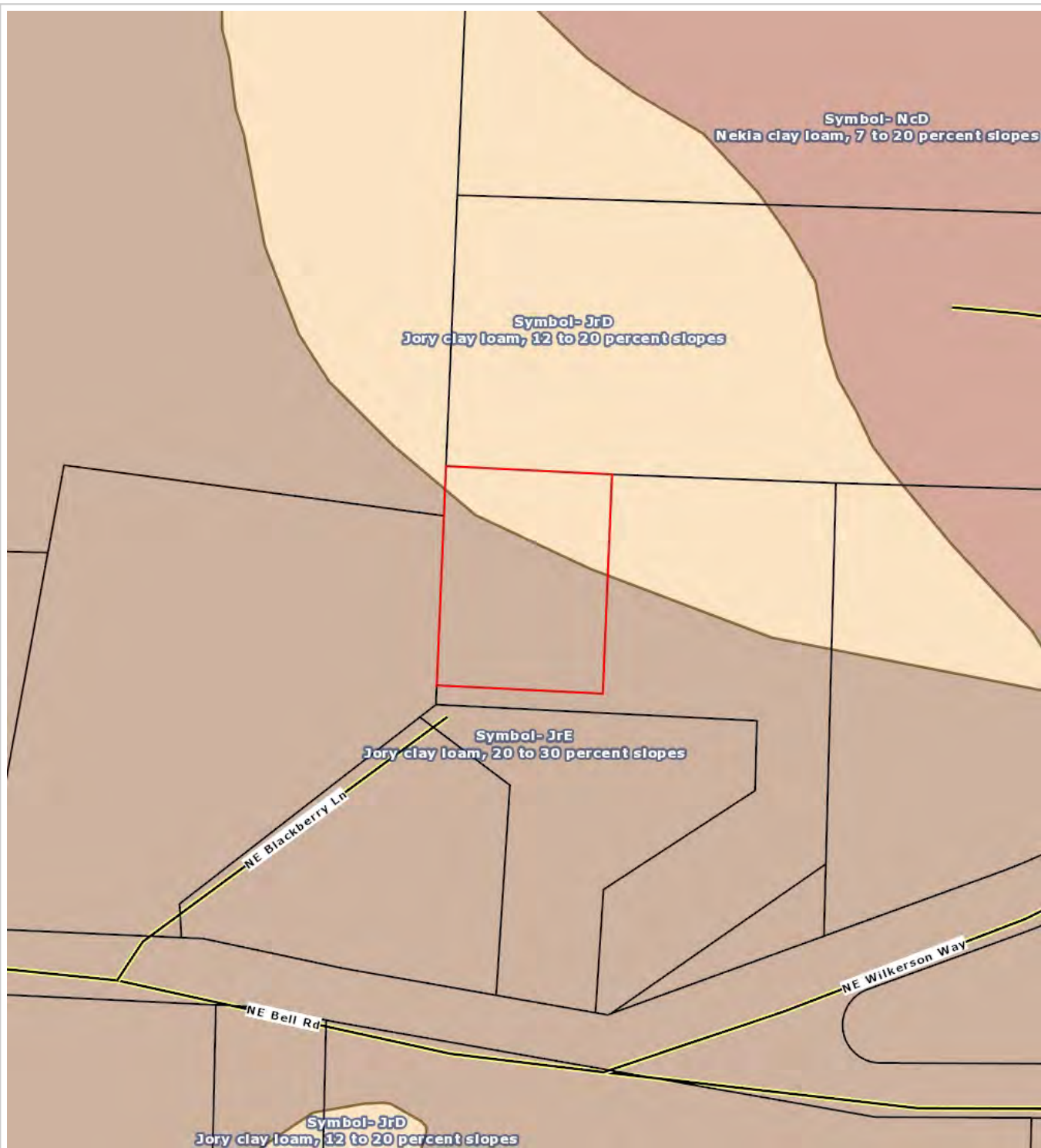
Sentry Dynamics, Inc. and its customers make no representations, warranties or conditions, express or implied, as to the accuracy or completeness of information contained in this report.



TICOR TITLE™

Parcel ID: R320503300

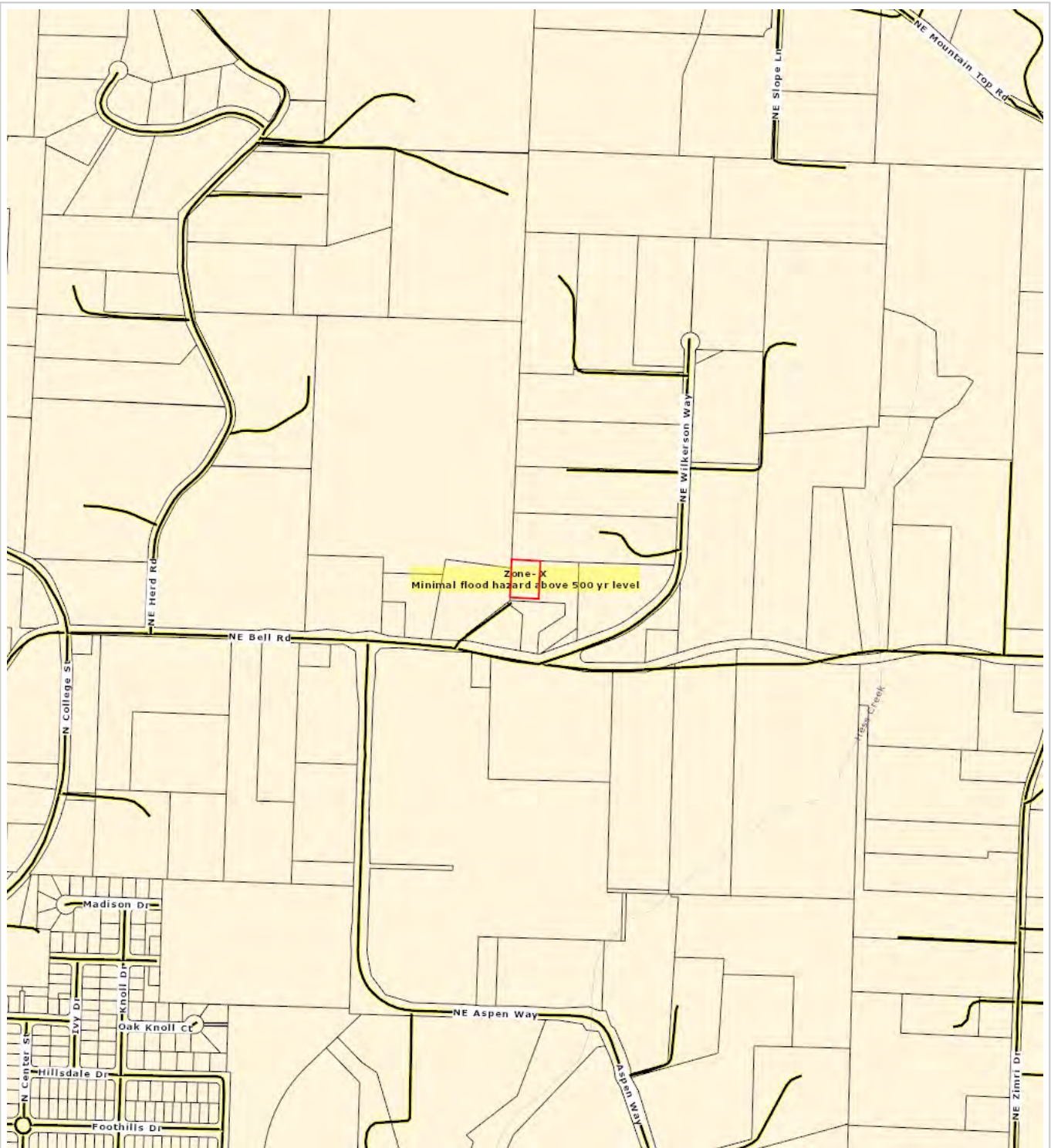
Sentry Dynamics, Inc. and its customers make no representations, warranties or conditions, express or implied, as to the accuracy or completeness of information contained in this report.



TICOR TITLE™

Parcel ID: R320503300

Sentry Dynamics, Inc. and its customers make no representations, warranties or conditions, express or implied, as to the accuracy or completeness of information contained in this report.



TICOR TITLE™

Parcel ID: R320503300

Sentry Dynamics, Inc. and its customers make no representations, warranties or conditions, express or implied, as to the accuracy or completeness of information contained in this report.