

Johnson Twp – LaPorte County

FOR SALE

18.1+/- Acres

17.28+/- Tillable Acres | 0.82+/- Other

Productive Farmland

PROPERTY INFORMATION

LOCATION

Approximately 1/4 mile east of the intersection of CR 875 E and CR 950 S on the north side of CR 950 S.

ZONING
Agricultural

TOPOGRAPHY
Level

SCHOOL DISTRICT
John Glenn School Corp

ANNUAL TAXES
\$565.84

DITCH ASSESSMENT
\$27.16



Julie Matthys
574.310.5189
juliem@halderman.com



HALDERMAN

REAL ESTATE & FARM MANAGEMENT

HLS# JAM-12286 (19)

800.424.2324 | halderman.com



HALDERMAN

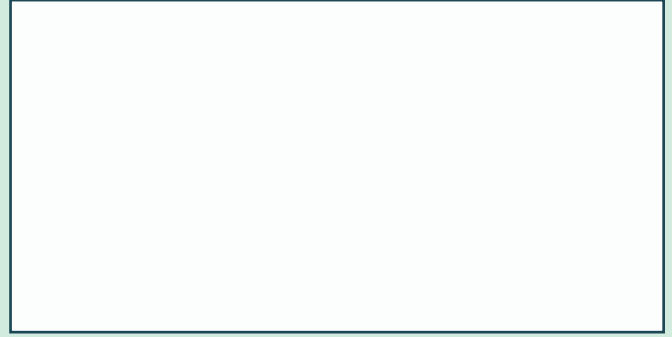
REAL ESTATE & FARM MANAGEMENT

PO Box 297

Wabash, IN 46992

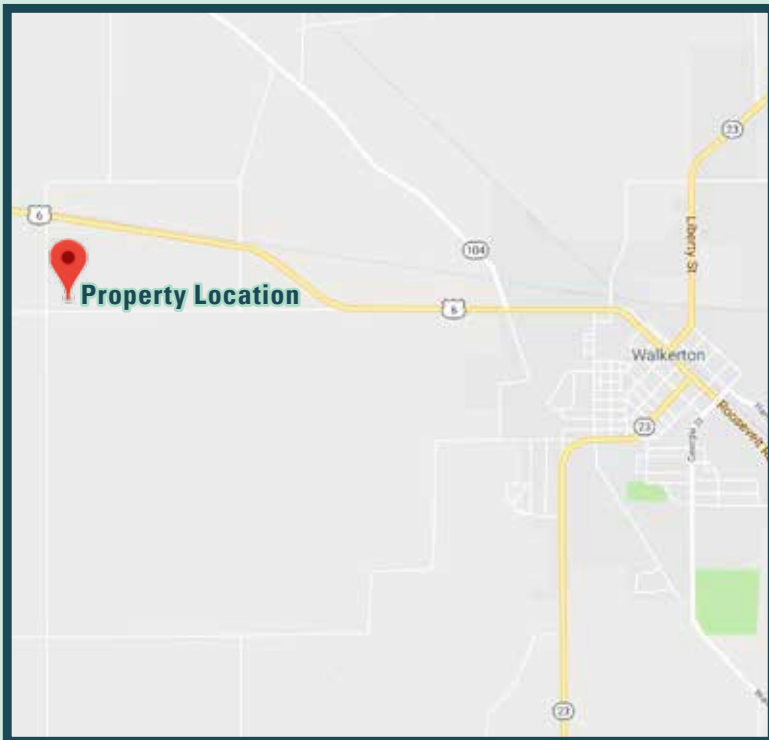
Johnson Twp – LaPorte County

FOR SALE



18.1+/- Acres

Productive Farmland



Soil Information

Code	Soil Description	Acres	Corn	Soybeans
Field borders provided by Farm Service Agency as of 5/21/2008. Soils data provided by USDA and NRCS.				
Qu	Quinn loam	14.90	137	35
TcA	Tracy sandy loam, 0 to 2 percent slopes	2.38	102	36
Weighted Average		132.2		35.1