



# Missouri Recreational and Productive Crop Farm for Sale - Cole County

**T R O P H Y**  
PROPERTIES AND AUCTION  
LAND | RECREATIONAL | RESIDENTIAL

www.TrophyPA.com • 855.573.5263 • leads@trophyapa.com



## PROPERTY ADDRESS:

00 Hwy U  
Lohman, MO 65053

**PRICE:** \$275,000

**ACRES:** 63

**COUNTY:** Cole

## PROPERTY DESCRIPTION:

This 63 +/- Missouri recreational and productive crop farm for sale in Cole County lays just south of Moreau River and is the perfect combination of tillable acreage. There is also wildlife cover and nesting, tall mature timber for turkey roosts, and a seasonal creek that runs down the middle provide easy access for the local whitetail deer population.

As you tour around this property, you will see the previous owners went the extra mile in putting together the perfect combination of farmland and wildlife habitat. There is a large equipment shed on the property and electric is on-site. This would be an excellent farm to build your dream homestead or hunting cabin. Rarity, a true turnkey property, in one of the best hunting areas of Cole County. You can rest assured you won't be disappointed!

## PROPERTY HIGHLIGHTS:

- 63 +/- acres
- Productive crop ground
- Excellent hunting
- Spring/creek water
- Electric on-site
- Equipment shed
- Great building sites



## PRESENTED BY:

### DEREK KEEVER

**Land Specialist - MO**

M: (573) 619-7763

P: (855) 573-5263 x728

dkeever@trophyapa.com

Trophy Properties and Auction

15480 Clayton Road

Suite 101

Ballwin, MO 63011

www.Trophyapa.com

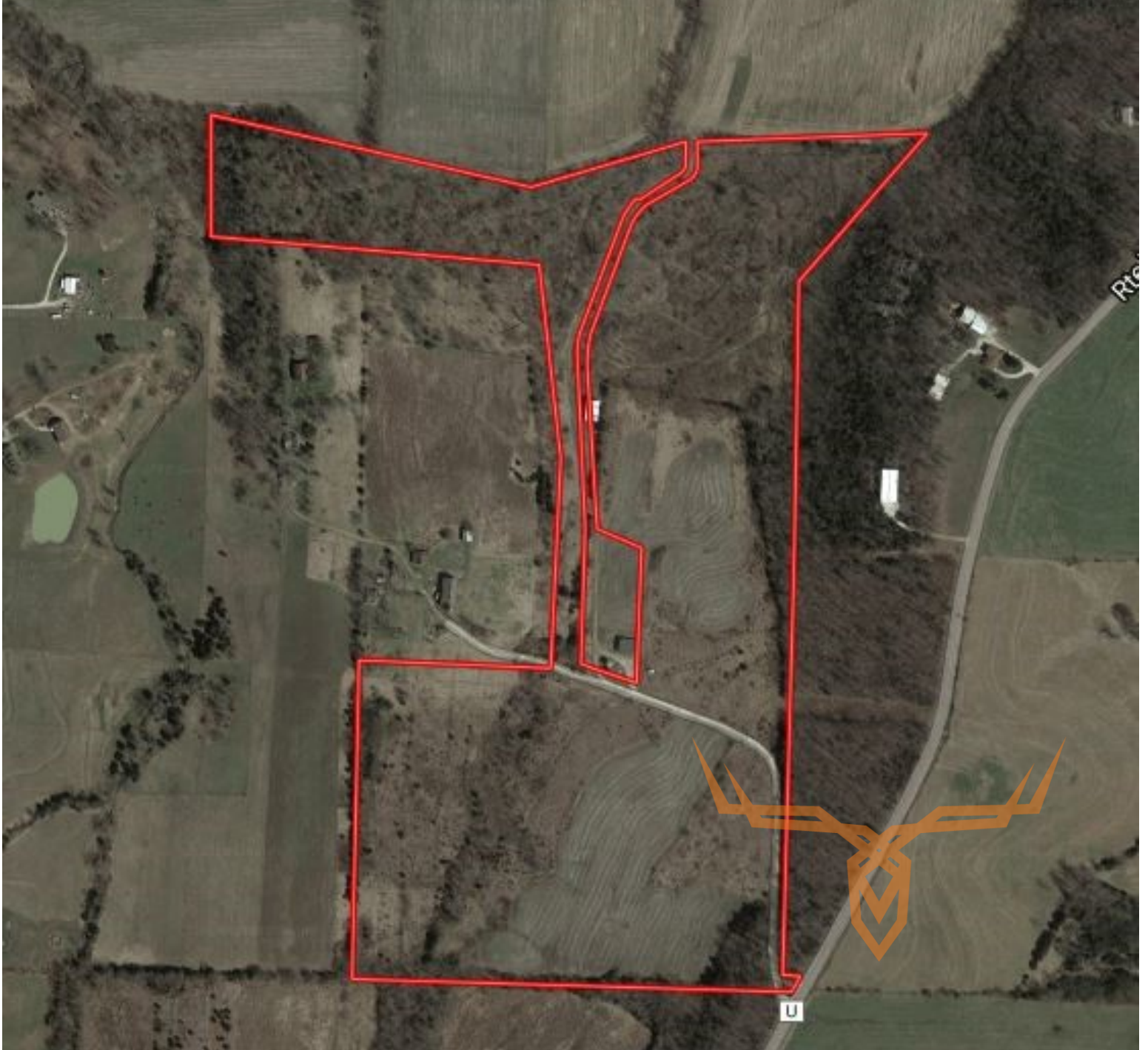
leads@trophyapa.com



**T R O P H Y**  
PROPERTIES AND AUCTION  
LAND | RECREATIONAL | RESIDENTIAL

# Missouri Recreational and Productive Crop Farm for Sale - Cole County

[www.TrophyPA.com](http://www.TrophyPA.com) • 855.573.5263 • [leads@trohypa.com](mailto:leads@trohypa.com)



Broker does not guarantee the accuracy of sq. ft., lot size, or other information, buyer is advised to independently verify the accuracy of information through personal inspection and with appropriate professionals

**TAXES: \$92**

**TAX YEAR: 2017**