



24411 S Hwy 349
42± Acres
Midland County | Midland, TX 79706



Presented By:

Caleb Matott, Broker/Owner

RanchSpecialist@CMRanchRealEstate.com | 432-349-3330



Rural Property - 42± Acres Midland County | Midland, TX



Presented By:
Caleb Matott, Broker/Owner
432-349-3330
BigDogRanchSales@mac.com

CM Ranch Real Estate

6800 W. County Rd. 48 | Midland, TX 79707 | 432-219-2220 | RanchSpecialist@CMRanchRealEstate.com
www.CMRanchRealEstate.com

Property Details:

Approximate Building Sq. Ft.	2042±
Lot Size:	42± Acres
Current Zoning:	No Restrictions
County:	Midland

Property Overview:

Rare find in Midland County, south of town on Hwy 349, sits 42± acres with an adorable ranch house, mature landscaping, large trees, and a pond. This property is the perfect set-up for the outdoor enthusiast. There is an abundance of space for animals including barns/storage, horse stalls, as well as a chicken coop.

The charming residence is 2,042 sq. ft. with 4 bedrooms/2.5 bath and is comprised of beautiful rock siding in the front as well as a lovely pergola in the back. This is a wonderful property with endless possibilities. You do not want to miss out on this one. Please contact Caleb Matott at 432-349-3330 to schedule your private showing.

Please note, due to very large dogs, the seller must have a 24-hour notice to show.

Property Website

Property Video



Presented By:
Caleb Matott, Broker/Owner
432-349-3330
BigDogRanchSales@mac.com

CM Ranch Real Estate

6800 W. County Rd. 48 | Midland, TX 79707 | 432-219-2220 | RanchSpecialist@CMRanchRealEstate.com
www.CMRanchRealEstate.com



Midland County | Midland, TX - 42± Acres

\$499,000.00

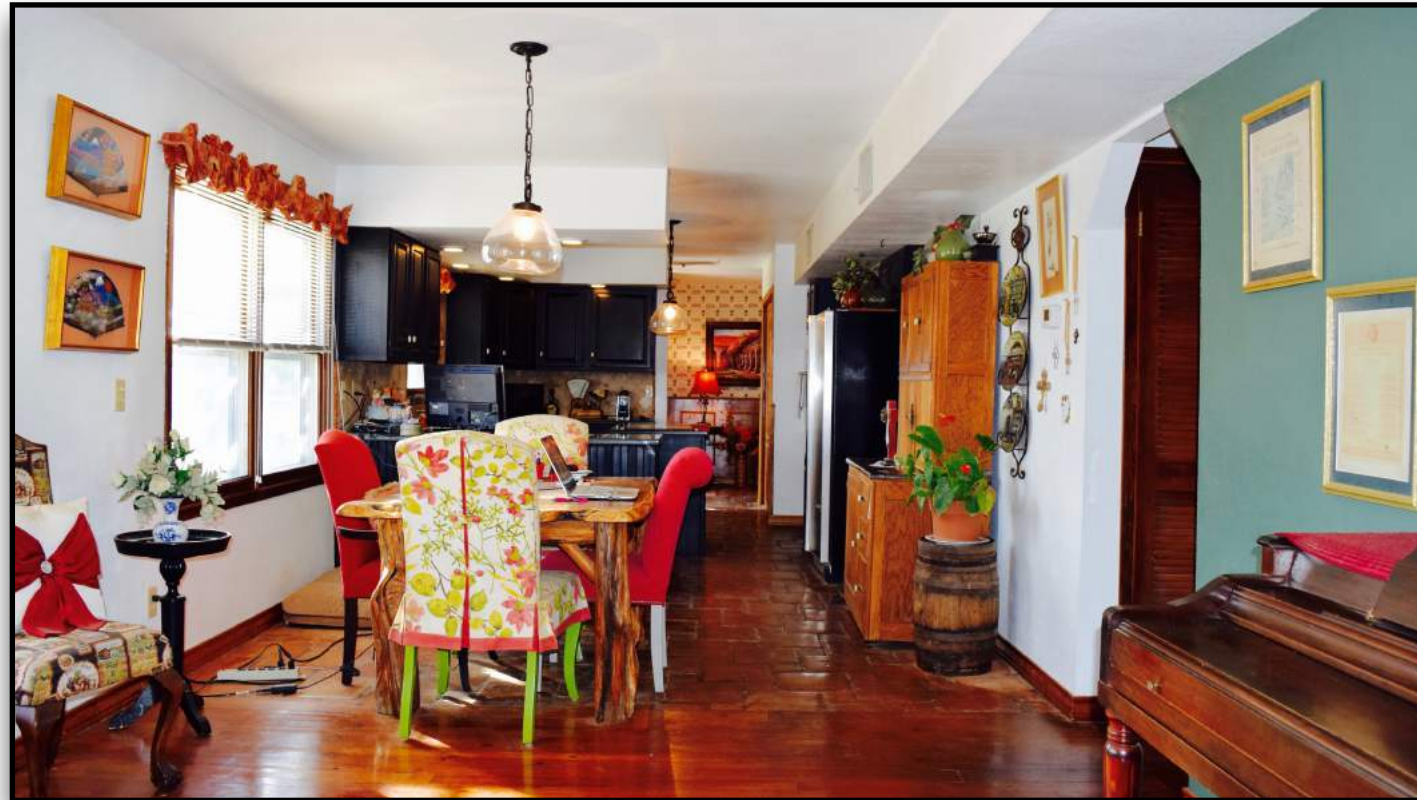


Presented By:
Caleb Matott, Broker/Owner
432-349-3330
BigDogRanchSales@mac.com

CM Ranch Real Estate

6800 W. County Rd. 48 | Midland, TX 79707 | 432-219-2220 | RanchSpecialist@CMRanchRealEstate.com

www.CMRanchRealEstate.com



Presented By:
Caleb Matott, Broker/Owner
432-349-3330
BigDogRanchSales@mac.com

CM Ranch Real Estate

6800 W. County Rd. 48 | Midland, TX 79707 | 432-219-2220 | RanchSpecialist@CMRanchRealEstate.com

www.CMRanchRealEstate.com



Presented By:
Caleb Matott, Broker/Owner
432-349-3330
BigDogRanchSales@mac.com

CM Ranch Real Estate

6800 W. County Rd. 48 | Midland, TX 79707 | 432-219-2220 | RanchSpecialist@CMRanchRealEstate.com

www.CMRanchRealEstate.com



Midland County | Midland, TX - 42± Acres

\$499,000.00



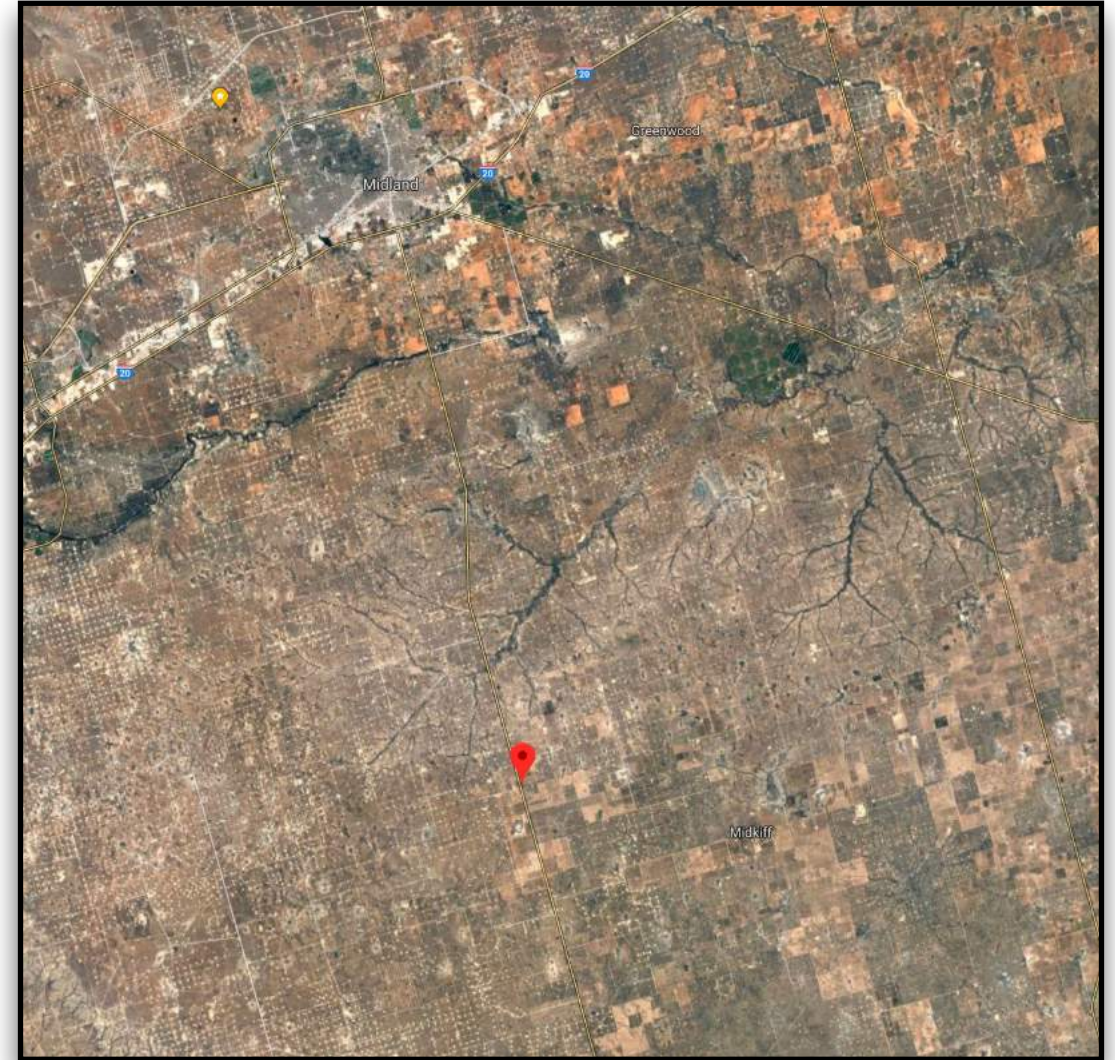
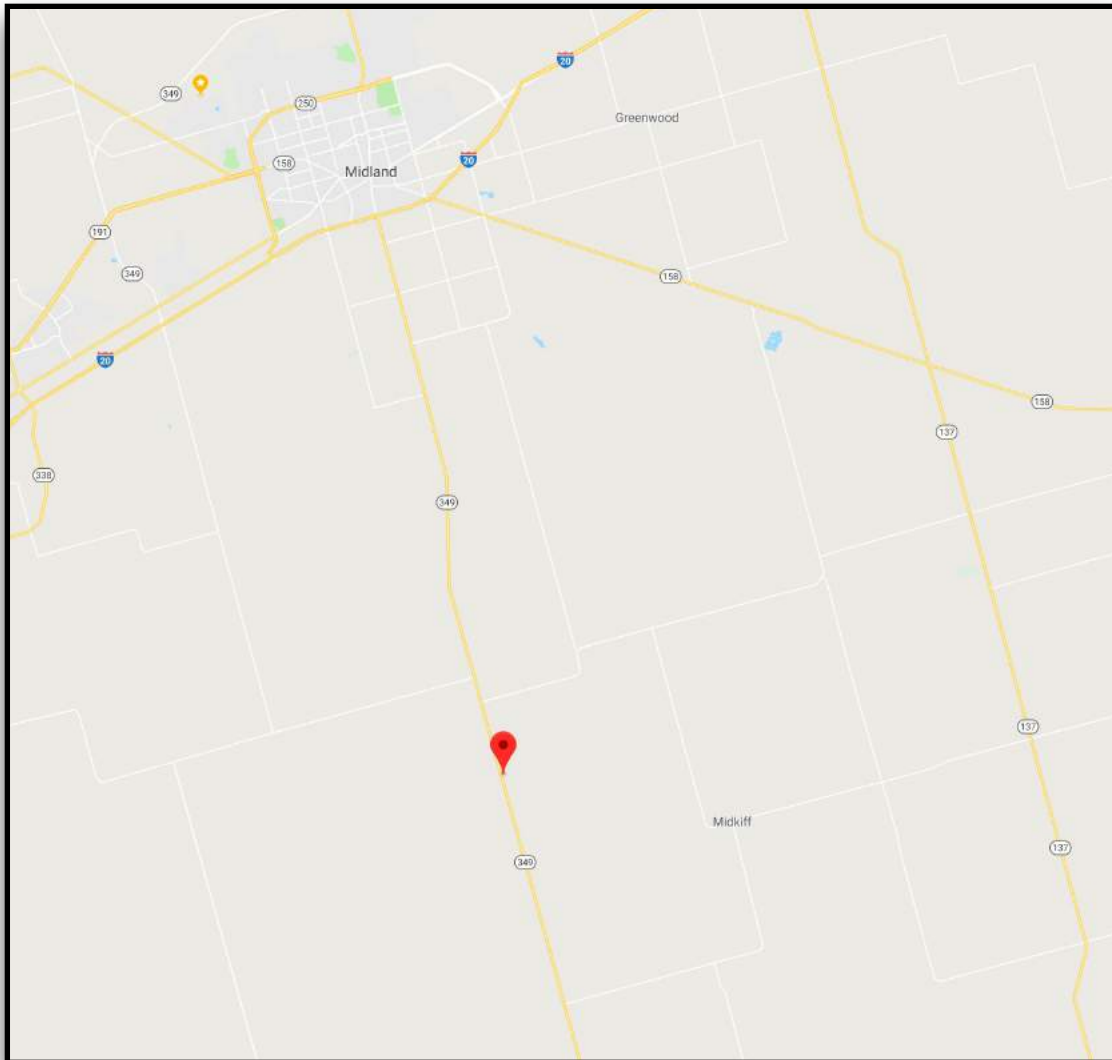
Copyright © 2018 CM Ranch Real Estate. All Rights Reserved.

Presented By:
Caleb Matott, Broker/Owner
432-349-3330
BigDogRanchSales@mac.com

CM Ranch Real Estate

6800 W. County Rd. 48 | Midland, TX 79707 | 432-219-2220 | RanchSpecialist@CMRanchRealEstate.com

www.CMRanchRealEstate.com



Click for Interactive Property Map

Texas law requires all real estate licensees to give the following information about brokerage services to prospective buyers, tenants, sellers, & landlords.

Information About Brokerage Services

DISCLAIMER – This property offering is subject to prior sale, change in price, or removal from market without notice. While the information provided is deemed reliable, it is not guaranteed by Caleb Matott or CM Ranch Real Estate.

Presented By:
Caleb Matott, Broker/Owner
432-349-3330
BigDogRanchSales@mac.com

CM Ranch Real Estate
6800 W. County Rd. 48 | Midland, TX 79707 | 432-219-2220 | RanchSpecialist@CMRanchRealEstate.com
www.CMRanchRealEstate.com