



**Sy Creek Ranch**

**216 Acres**

**Edwards County, TX**



Located in south central Edwards county  
Nice rolling terrain offering fantastic views  
Heavily wooded, making a great habitat for wildlife  
Neat 8X20 cabin that sleeps 4 with full bathroom  
Big porch offering a perfect spot for hanging out and bbqing  
An elevated porch offers fantastic views of the ranch  
Good internal road system      Shared well close by and electricity is not far away  
Well defined boundaries with fencing on two sides  
and fence posts in place on the other two sides

**Large Neighbors**

Three feeders and one blind, but there is plenty of room for more  
Pond strategically located in the center of the ranch that is a proven holder of water

Area for food plots  
Whitetail, turkey, hog, axis, and aoudad

Ag exempt taxes

This is a must see to appreciate this land!

Reduced Price! \$325,000      listing #219

**Western Hill Country Realty**

[www.westernhillcountryrealty.com](http://www.westernhillcountryrealty.com)

[info@westernhillcountryrealty.com](mailto:info@westernhillcountryrealty.com)

**830-683-4435**

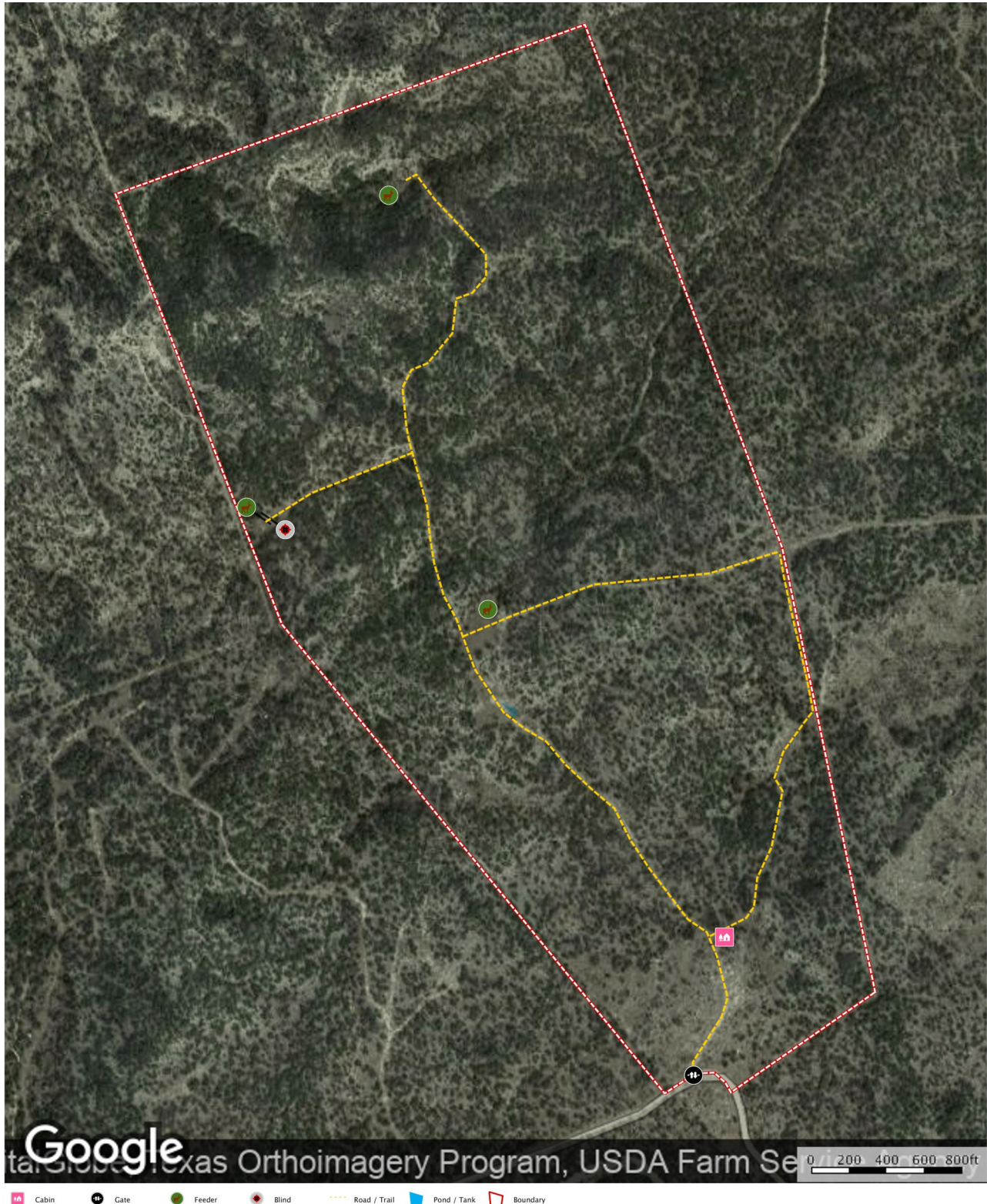




**Sy Creek Ranch**

**216 Acres**

**Edwards County, TX**



**Western Hill Country Realty**

[www.westernhillcountryrealty.com](http://www.westernhillcountryrealty.com)

[info@westernhillcountryrealty.com](mailto:info@westernhillcountryrealty.com)

**830-683-4435**





**Sy Creek Ranch**

**216 Acres**

**Edwards County, TX**



**Western Hill Country Realty**

[www.westernhillcountryrealty.com](http://www.westernhillcountryrealty.com)

[info@westernhillcountryrealty.com](mailto:info@westernhillcountryrealty.com)

**830-683-4435**

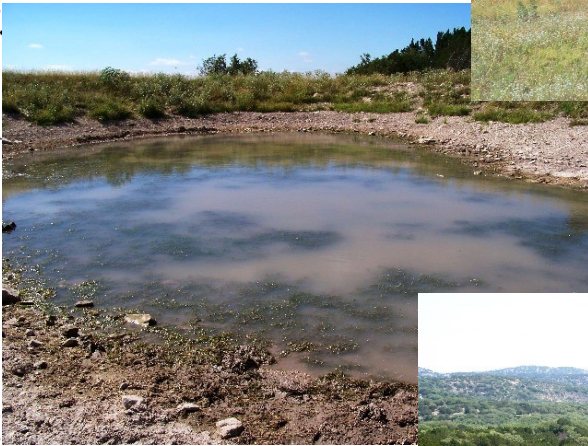




**Sy Creek Ranch**

**216 Acres**

**Edwards County, TX**



**Western Hill Country Realty**

[www.westernhillcountryrealty.com](http://www.westernhillcountryrealty.com)

[info@westernhillcountryrealty.com](mailto:info@westernhillcountryrealty.com)

830-683-4435