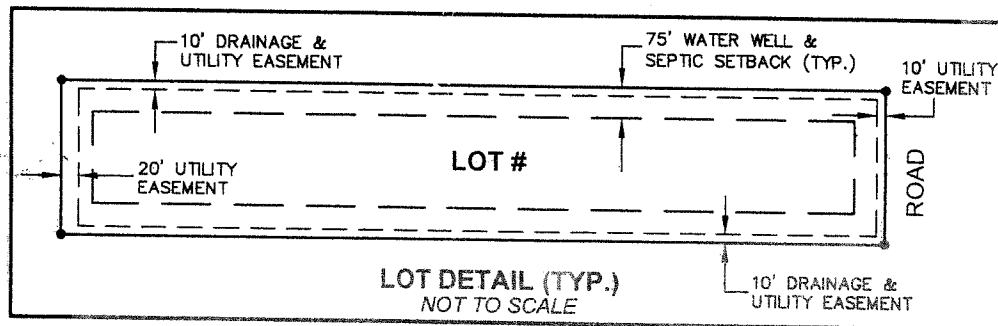


CURVE TABLE					
CURVE #	LENGTH	RADIUS	DELTA	CHORD LENGTH	CHORD
EC1	845.37'	533.00'	90° 52' 30"	759.51'	N45° 17' 55"W
EC2	213.43'	994.90'	12° 17' 29"	213.02'	S7° 05' 15"E
C1	123.09'	1170.00'	6° 01' 40"	123.03'	N2° 39' 05"E
C2	320.17'	1170.00'	15° 40' 45"	319.17'	N13° 30' 17"E
C3	567.03'	1000.00'	32° 29' 18"	559.46'	S5° 06' 00"W
C4	244.22'	1000.00'	13° 59' 33"	243.61'	S18° 08' 25"E
C5	449.73'	1000.00'	25° 46' 03"	445.95'	S38° 01' 13"E
C6	465.99'	1230.00'	21° 42' 24"	463.21'	N10° 29' 27"E
C7	119.96'	940.00'	7° 18' 42"	119.87'	S17° 41' 18"W
C8	677.14'	940.00'	41° 16' 26"	662.60'	S6° 36' 16"E
C9	388.22'	940.00'	23° 39' 46"	385.46'	S39° 04' 22"E
C10	103.11'	65.00'	90° 53' 28"	92.64'	N67° 58' 20"W
C11	24.59'	994.90'	1° 24' 59"	24.59'	S1° 39' 00"E
C12	188.84'	994.90'	10° 52' 30"	188.55'	S7° 47' 44"E
C13	150.24'	65.00'	132° 25' 56"	118.96'	N43° 41' 22"E
C14	92.69'	65.00'	81° 42' 13"	85.03'	S29° 14' 33"E



NO. 1323

N89° 38' 15"E 1204.32'

PROJECT
BENCHMARK:
½" IRON ROD FOUND
ELEV: 1749.62'

1178.76'

N0° 21' 45"W
59.54'

43.45'
25.56'

N30° 21' 45"W
18.00'

N0° 12' 20"W 1479.67'
866.80'

1
23.64AC.

N0° 21' 45"W 668.80'

S0° 21' 45"E 654.46'

60'
R.O.W.

N89° 38' 15"E
1183.67'

C1

C6

C2

612.87'

2
19.73AC.

SLATE ROCK ROAD

C3

C7

C8

N69° 42' 00"W 719.61'

N89° 38' 15"E
382.27'