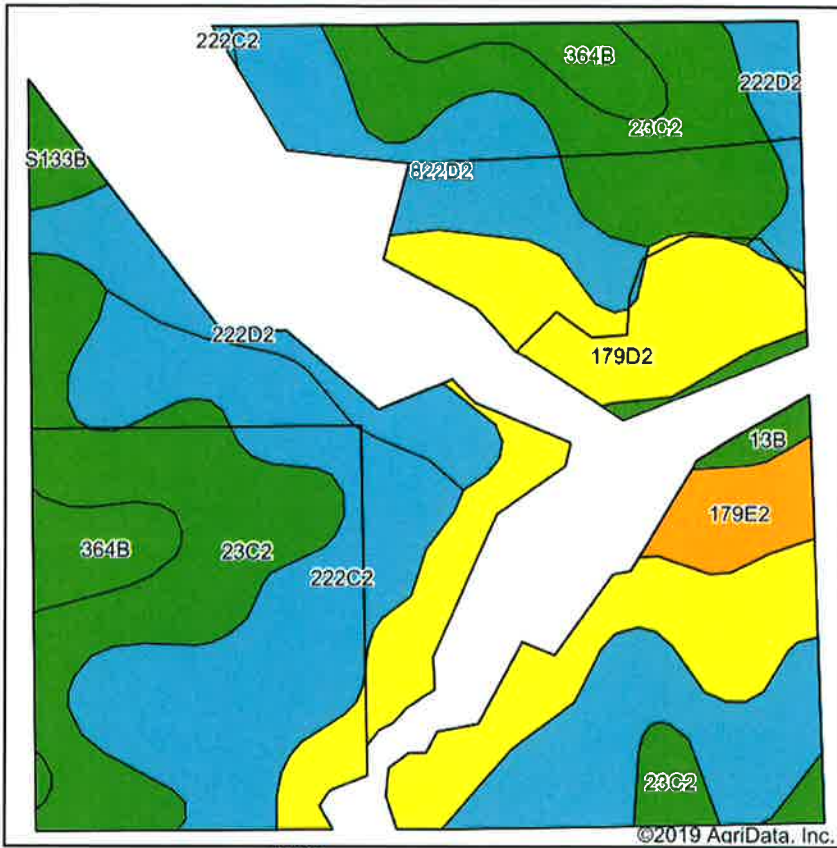
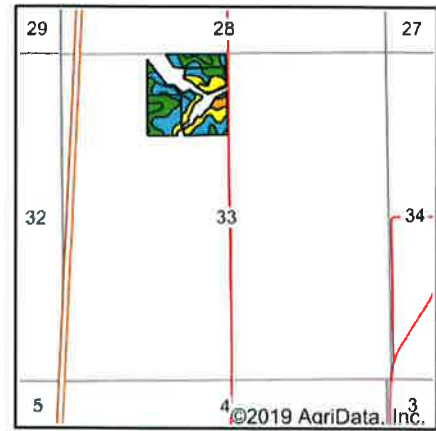


Soils Map



Soils data provided by USDA and NRCS.



State: **Iowa**
 County: **Monroe**
 Location: **33-71N-17W**
 Township: **Monroe**
 Acres: **29.96**
 Date: **3/6/2019**

Hawkeye Farm Mgmt & Real Estate

United Country Real Estate

22 N Main, Albion IA Phone: 541.932.7796
 Email: hawkeye@iowas.com
 On the web: www.iowas.com
 www.iowawhitehallfarms.com

Maps Provided By:

surety
 CUSTOMIZED ONLINE MAPPING
 © AgriData, Inc. 2019 www.AgriDataInc.com



Area Symbol: IA135, Soil Area Version: 26

Code	Soil Description	Acres	Percent of field	CSR2 Legend	Non-Irr Class *c	CSR2**	CSR	*n NCCPI Soybeans
222C2	Clarinda silty clay loam, 5 to 9 percent slopes, moderately eroded	7.99	26.7%		IVw	28	25	38
23C2	Arispe silty clay loam, 5 to 9 percent slopes, moderately eroded	7.59	25.3%		IIIe	62	50	74
179D2	Gara loam, 9 to 14 percent slopes, moderately eroded	6.47	21.6%		IVe	43	43	53
822D2	Lamoni clay loam, 9 to 14 percent slopes, moderately eroded	2.43	8.1%		IVe	11	15	42
222D2	Clarinda silty clay loam, 9 to 14 percent slopes, moderately eroded	2.10	7.0%		IVe	8	10	44
364B	Grundy silty clay loam, 2 to 5 percent slopes	1.76	5.9%		IIe	72	75	70
179E2	Gara loam, 14 to 18 percent slopes, moderately eroded	0.90	3.0%		VIe	35	33	49
13B	Olmitz-Colo-Vesser complex, 2 to 5 percent slopes	0.39	1.3%		IIw	82	60	72
S133B	Colo silty clay loam, heavy till, 2 to 5 percent slopes, rarely flooded	0.33	1.1%		IIw	80		81
Weighted Average						41.1	*-	*n 54.2

**IA has updated the CSR values for each county to CSR2.

*- CSR weighted average cannot be calculated on the current soils data, use prior data version for csr values.

*n: The aggregation method is "Weighted Average using major components"

*c: Using Capabilities Class Dominant Condition Aggregation Method

Soils data provided by USDA and NRCS.