

# *Sonny Todd Real Estate*

---

*301 West First, P.O. Box 788, Big Timber, MT 59011*

*(406) 932-1031 Fax: (406) 932-4838*

*info@sonnytoddrealestate.com ~ www.sonnnytoddrealestate.com*



## Lane's End on the Yellowstone

Big Timber, Montana

**\$1,299,000**

Astonishing vistas expand this 51-acre piece of paradise—the ultimate in privacy, yet conveniently located mid-way between Bozeman and Billings. With direct access to the Yellowstone River, the property beckons one to fish, drift, bird watch, picnic, or simply enjoy the river flow. The seasons bring dramatic, colorful changes to the surroundings while the home provides comfort and opportunities to fulfill dreams. Windows positioned for passive solar benefits, a Tulikivi soapstone stove, and a porch on two sides of the main house are thoughtfully designed to enhance country living. Two bedrooms, one bath, and a loft upstairs compliment the master bedroom and bath on the first floor. The living area on the first floor includes the kitchen, with a view of the river, breakfast nook, library, dining area and living room, entry porch/mudroom, half bath, and laundry room. The guest cabin, over the hill from the main house, offers adventure and solitude right in your own back yard. The two-car garage has ample room for workshop and storage. Approximately six miles from Big Timber, this unique property and home at Lane's End offer access, privacy, and a western, Big Sky way of life between the mountains and the prairie, along the free-flowing Yellowstone River.

---

**Notice:** The data contained herein was obtained from the owner and other sources deemed reliable, but is not guaranteed by agents. Prospective purchasers are advised to examine the facts to their own satisfaction. This offering is subject to change of price and terms, lease, prior sale or withdrawal from the market, without notice.





## **HOME:**

**Sq Ft: 2333**

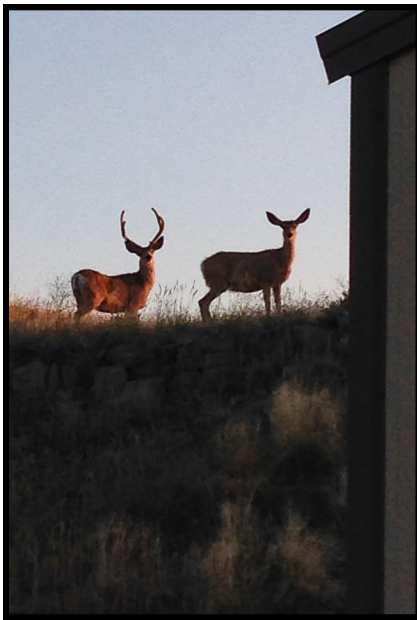
**Bedroom: 3**

**Bath: 2.5**

**Built in: 2007**

**Acreage: 51**

**Taxes: \$1,975**







*Logan Todd*  
*Cell (406) 930-3673*





---

# *Main House*









---

# *Guest Cabin*









