



PROPERTY REPORT

ADDRESS: 14110 Ridge Road, Sutter Creek, CA 95685

DESCRIPTION: This stunning 200.39 acres is located in the heart of Amador County's wine country. This beautiful property is situated in the Sierra foothills near the historic towns of Sutter Creek and Jackson. Held by a pioneering family in the California wine industry for more than 3 decades, this incredible property includes planted acres of wine grapes. The Amador County Rhone zone has a reputation of consistently producing superior wines. Irrigation is supplied from the Amador Water Agency via aqueduct running near the perimeter of the property. Excellent investment opportunity!

PRICE: \$1,375,000.00

APN's: 042-010-025-000, 042-010-067-000 & 044-110-006-000

MLS: *Exclusive*

CONTACT: Donn Bree Donn@Donn.com www.DONN.com

800-371-6669

AMADOR COUNTY

14110 Ridge Road, Sutter Creek, California



KU-RING-GAI RIDGE

Winery acres

This stunning 200.39 acreage is located in the heart of Amador County's wine country. This beautiful property is situated in the Sierra foothills near the historic towns of Sutter Creek and Jackson. Held by a pioneering family in the California wine industry for more than 3 decades, this incredible property includes several varieties of wine grapes. The Amador County Rhone zone has a reputation of consistently producing superior wines. Irrigation is supplied from the Amador Water Agency via aqueduct running near the perimeter of the property. The immediate area receives approximately 33+ inches of precipitation annually. Average high temperature for the area is 71.8 degrees Fahrenheit, while the average low is 49 degrees Fahrenheit. The overall average temperature is 60.4 degrees Fahrenheit. Half of the annual precipitation falls during the first trimester of the year. The ranch elevation is approximately 2000 feet above sea level; above the fog line and exposed to the daily on-shore/off-shore coastal breezes.



\$1,375,000



www.Donn.com

DRE# 01109566
NMLS# 243741

DONN BREE



RANCHES • HOMES
LAND • LOANS

800-371-6669

RED HAWK REALTY

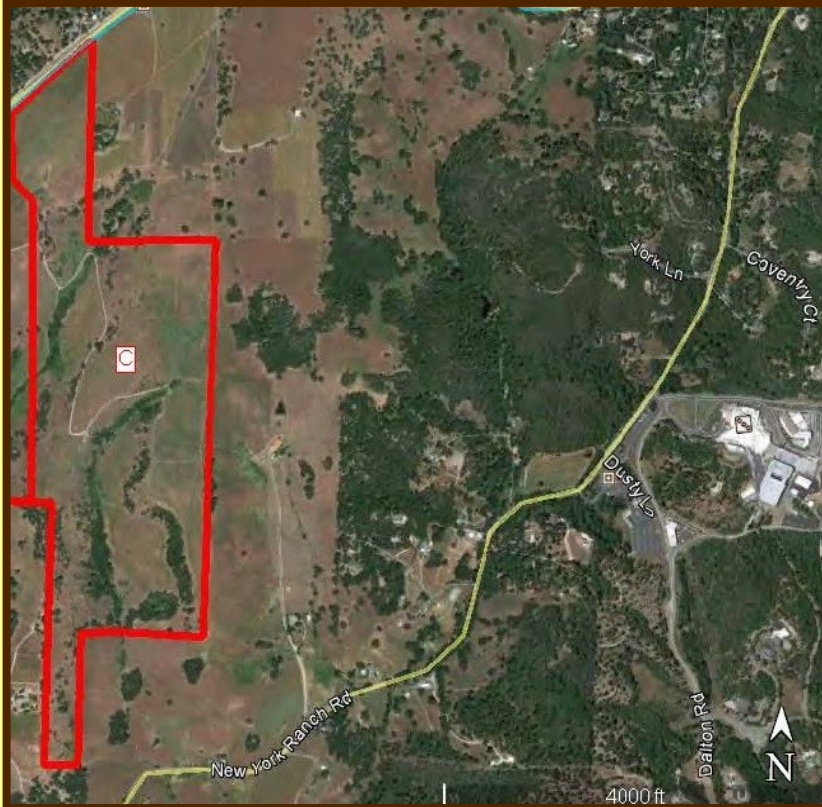
Junction Hwy 78 & Hwy 79
Santa Ysabel, CA 92070

Donn@Donn.com

We Know The Backcountry!



APN'S: 042-010-025-000, 042-010-067-000, 044-110-006-000



Ku-ring-gai Ridge Vineyard is ideally located on Ridge Road, a well-traveled route providing high visibility for the expansive vineyard. Turning onto the ranch reveals an oak-studded terrain consisting of interconnected vineyard locks demarcated by gentle ridges. There are many desirable home sites on the property with incredible panoramic, pastoral views. This property has special appeal as a result of not having been developed for residential use; a pristine palette upon which the discriminating buyer can create their own vision. Varietals planted include: Cabernet Sauvignon, Cabernet Franc, Merlot, Sangiovese, Chardonnay, Pinotage, Nebbiolo, Viognier,

Aglanico, Sousao, Petite Syrah, Syrah, Orange Muscat, Grenache Noir, Barbera. All planting since 1992 has been with resistant root stock. The towns of Sutter Creek feature a variety of lodging, restaurant, and entertainment options. Agriculture and tourism are the dominant economy activities in this historic Gold Rush area. There are over 20 wineries located in the Shenandoah Valley, a scenic 30 minute drive. There are also several wineries in nearby Calaveras County, just 40 minutes from the ranch. Within 20 minutes from the ranch are three large lakes, all of which are stocked with a variety of fish. There are many other recreational activities available in the area: golf, world-class skiing, and hiking are minutes away. South Lake Tahoe is less than a two hour drive from the ranch. **Seller will consider financing your purchase with an acceptable offer.**



We Know The Backcountry!



Donn Bree, Ph.D., G.R.I.
POB 188
Santa Ysabel, CA 92070
800-371-6669
Donn@Donn.com
www.Donn.com



PROPERTY DESCRIPTION

Amador County

Ku-ring-gai Ridge

Vineyard

14110 Ridge Road
Sutter Creek, CA 95685



Donn Bree, Ph.D., G.R.I.
POB 188
Santa Ysabel, CA 92070
800-371-6669
Donn@Donn.com
www.Donn.com

INTRODUCTION & OVERVIEW

This stunning **200.39 Vineyard** is located in the heart of Amador County's wine country. This beautiful property is situated in the Sierra foothills near the historic towns of Sutter Creek and Jackson. Held by a pioneering family in the California wine industry for more than 2 decades, this offering includes planted acres of wine grapes. The Amador County Rhone zone has a reputation of consistently producing superior wines.

Irrigation is supplied from the Amador Water Agency via aqueduct running near the perimeter of the property. The immediate area receives approximately 33⁺ inches of precipitation annually. Average high temperature for the area is 71.8 degrees Fahrenheit, while the average low is 49 degrees Fahrenheit. The overall average temperature is 60.4 degrees Fahrenheit. Half of the annual precipitation falls during the first trimester of the year. The ranch elevation is approximately 2000 feet above sea level; above the fog line and exposed to the pleasant daily on-shore/off-shore coastal breezes.

Historical planted varietals include: *Cabernet Sauvignon, Cabernet Franc, Merlot, Sangiovese, Chardonnay, Pinotage, Nebbiolo, Viognier, Aglianico, Sousao, Petite Syrah, Syrah, Orange Muscat, Grenache Noir, Barbera*. All planting since 1992 has been with resistant root stock.

Ku-ring-gai Vineyard is ideally located on Ridge Road, a well-traveled route providing high visibility for the expansive vineyard. Turning onto the ranch reveals an oak-studded terrain consisting of interconnected vineyard blocks demarcated by gentle ridges. There are many desirable home sites on the property with incredible panoramic, pastoral views. This property has special appeal as a result of not having been developed for residential use; a pristine palette upon which the discriminating buyer can create their own vision.

AREA INFORMATION

The towns of Sutter Creek and Jackson feature a variety of lodging, restaurant, and entertainment options. Agriculture and tourism are the dominant economic activities in this historic Gold Rush area.

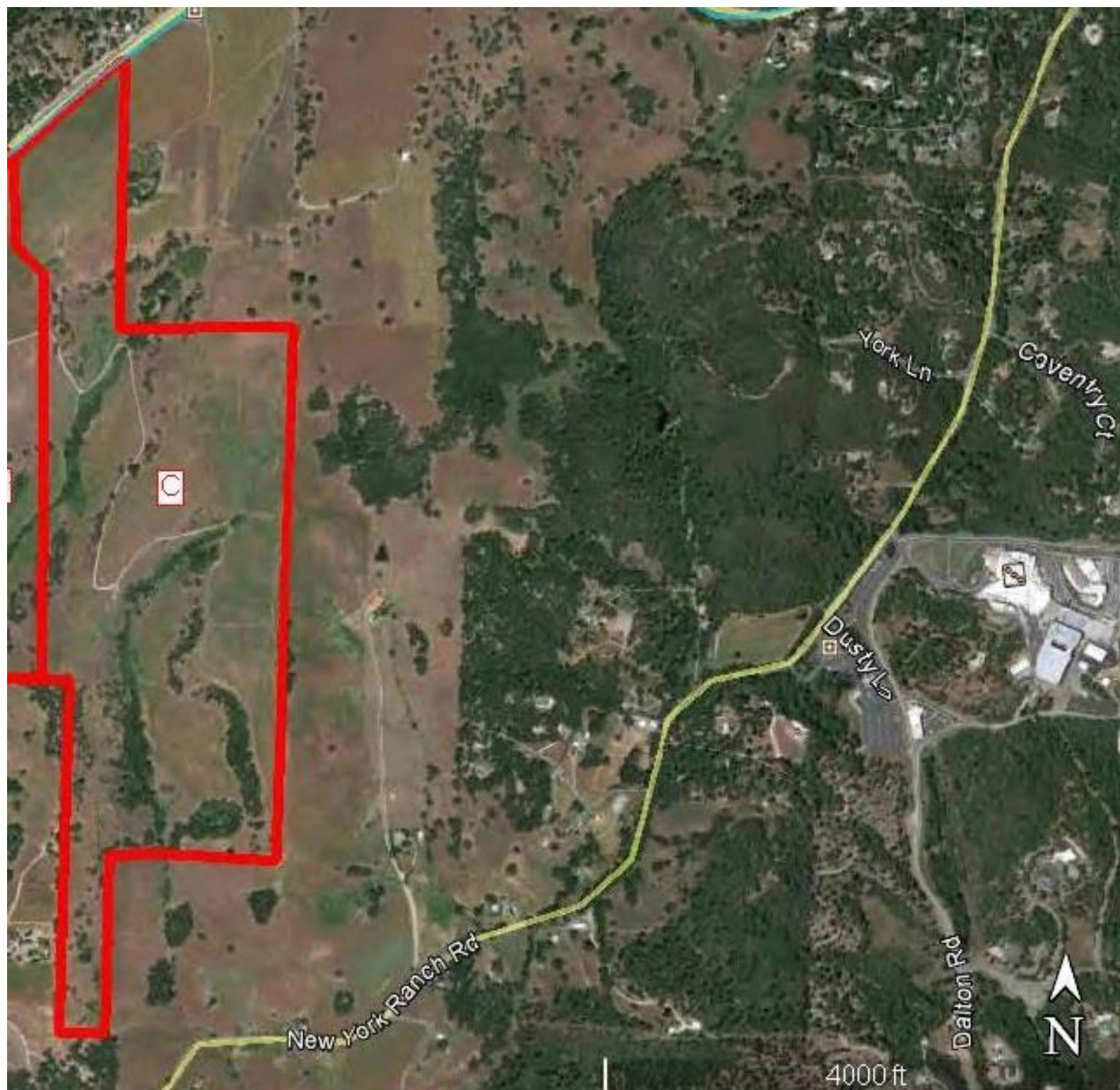
There are over 20 wineries located in the Shenandoah Valley, a scenic 30 minute drive. There are also several wineries in nearby Calaveras County, just 40 minutes from the ranch. Within 20 minutes from the ranch are three large lakes, all of which are stocked with a variety of fish.

There are many recreational activities available in the area: golf, world-class skiing, and hiking are minutes away. South Lake Tahoe is less than a two hour drive from the ranch.

NATURAL SETTING

The local habitat is home to an extraordinary range of indigenous flora and fauna. Deer, turkey, and many other animals roam freely in the general area. Oak woodland, native and non-native grasslands and chaparral biotic communities dominant the naturescape surrounding and delineating this prolific wine region.

Of great importance are the various directions from which the ranch can be accessed across lightly traveled state highways and picturesque county roads. The Sacramento and Stockton metropolitan areas are within a 1 hour scenic drive to this renowned wine region. San Francisco is a little over 2 hours driving time away.

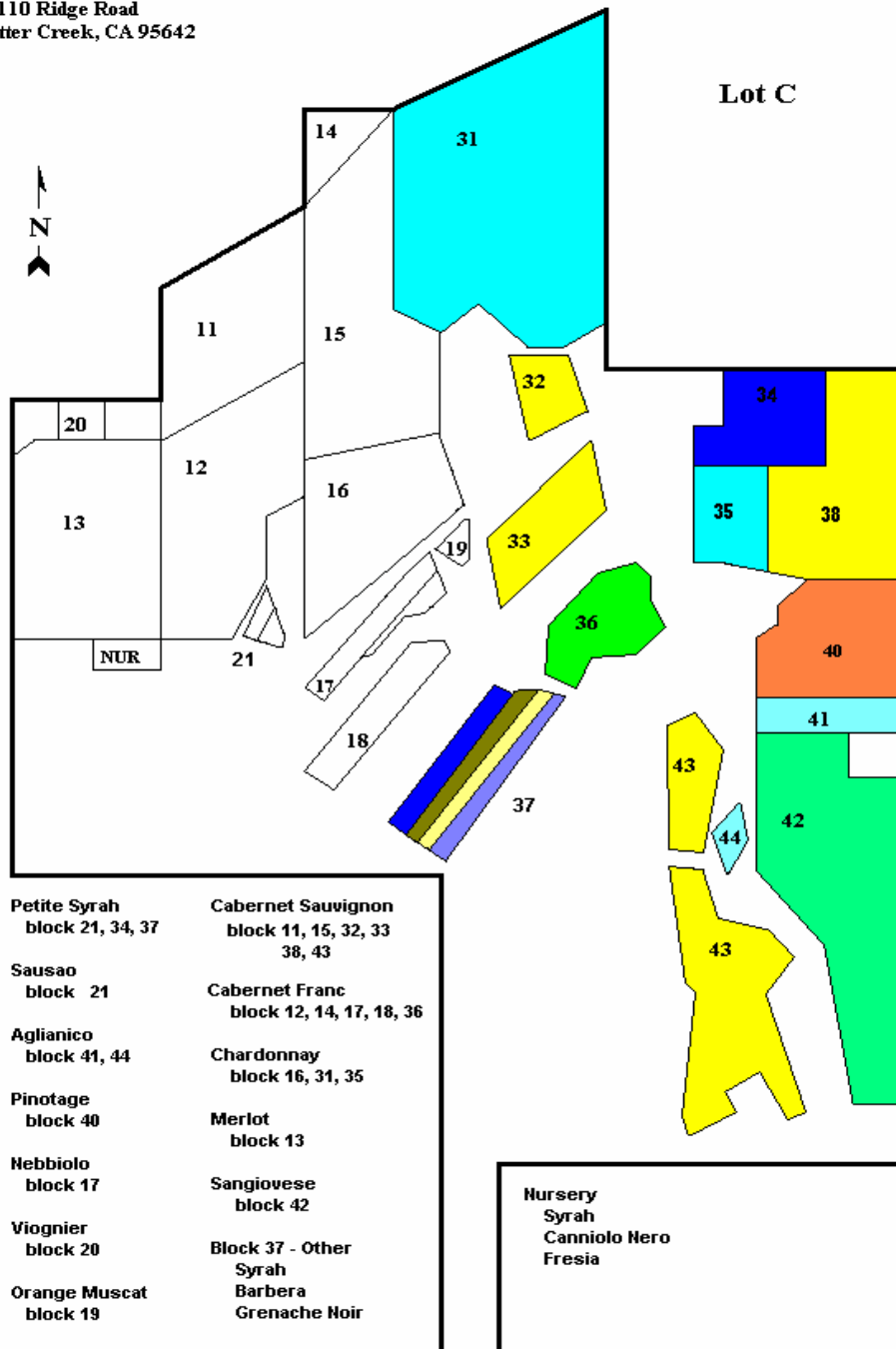
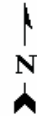


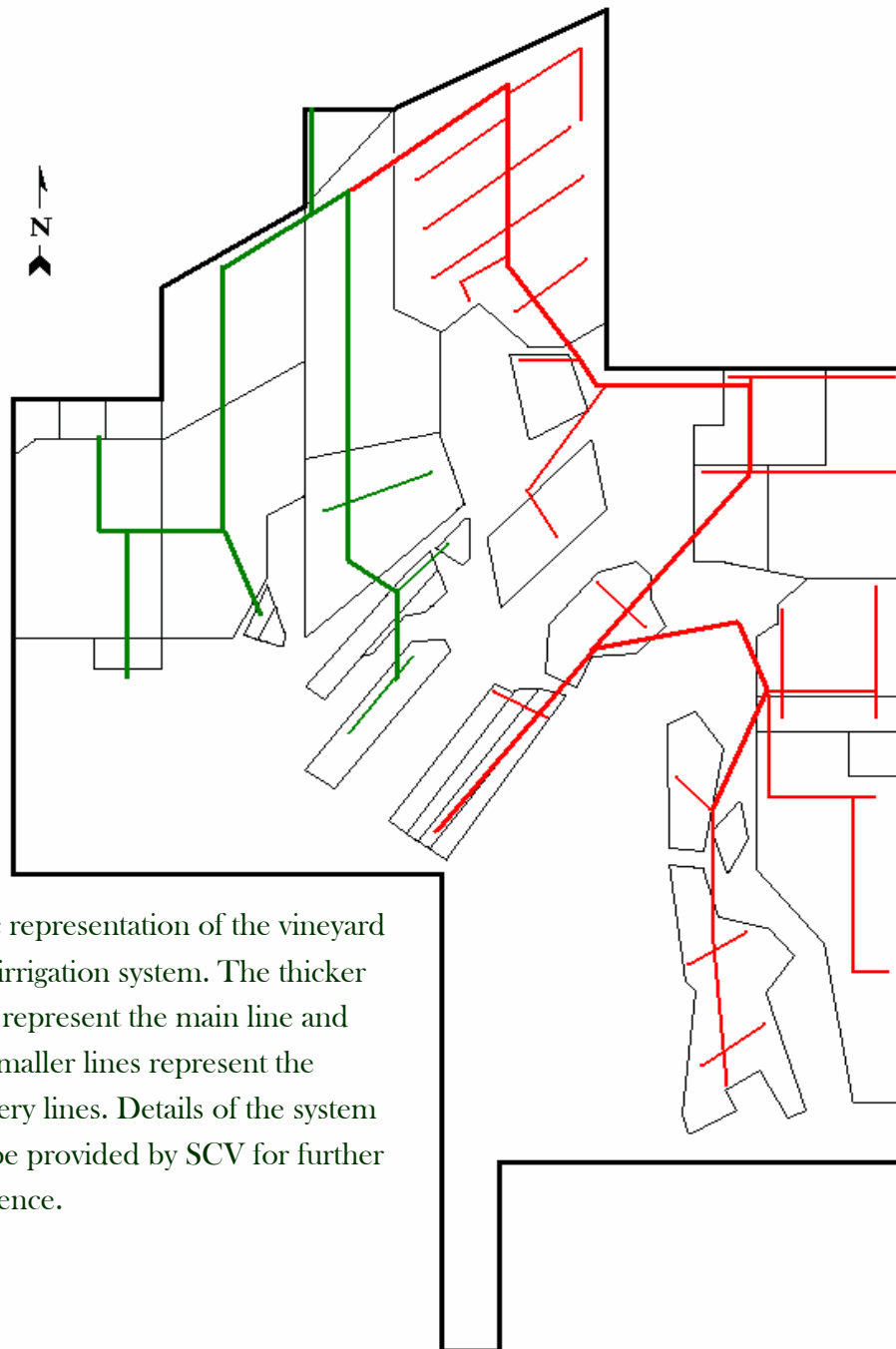
Ku ring gai Ridge Vineyards

Lot #	Block #		Acres	Open Field
C	31	◆ Chardonnay	8.81	
		◆ Syrah	3.29	
		◆ Petite Verdot	1.07	
		◆ Mourvedre	2.25	
		◆ Sauvignon Blanc	0.52	
		◆ Grenache	2.88	
		◆ Open Field		2.80
C	32	Cabernet Sauvignon	2.31	
C	33			
		◆ Aglianico	1.02	
		◆ Pinotage	4.05	
C	34	Petite Syrah	7.83	
C	35	Chardonnay	4.66	
C	36	Cabernet Franc	5.30	
C	37			
		◆ Syrah	1.56	
		◆ Grenache	0.47	
		◆ Open Field		0.47
		◆ Open Field		0.47
C	38	Open Field		6.03
C	39	Cabernet Sauvignon	5.97	
C	40	Pinotage	5.15	
C	41	Aglianico	1.99	
C	42	Sangiovese	6.95	
C	43	Cabernet Sauvignon	11.90	
C	44	Aglianico	0.50	

78.48 9.77

Sutter Creek Vineyards
14110 Ridge Road
Sutter Creek, CA 95642





Basic representation of the vineyard drip irrigation system. The thicker lines represent the main line and the smaller lines represent the delivery lines. Details of the system can be provided by SCV for further reference.

Temperature - Precipitation - Sunshine - Snowfall

[Home](#) [United States](#) [California](#)

[Monthly](#) [Daily](#) [History](#) [Geo & Map](#) [Weather Forecast](#)

You are here: [United States](#) > [California](#) > [Sutter Creek](#)

Climate Sutter Creek - California

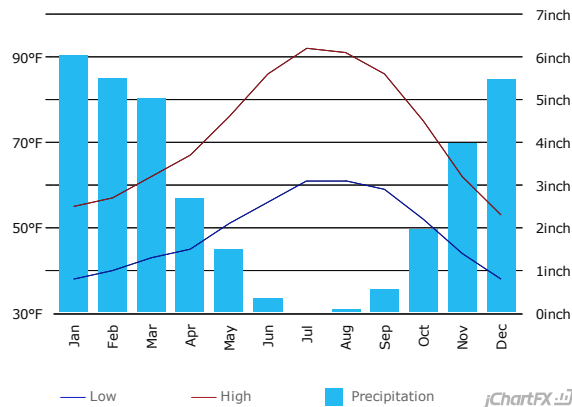
°C | °F

	Jan	Feb	Mar	Apr	May	Jun
Average high in °F:	55	57	62	67	76	86
Average low in °F:	38	40	43	45	51	56
Av. precipitation in inch:	6.02	5.51	5.04	2.68	1.5	0.35
Days with precipitation:	-	-	-	-	-	-
Hours of sunshine:	-	-	-	-	-	-

	Jul	Aug	Sep	Oct	Nov	Dec
Average high in °F:	92	91	86	75	62	53
Average low in °F:	61	61	59	52	44	38
Av. precipitation in inch:	0.04	0.08	0.55	1.97	3.98	5.47
Days with precipitation:	-	-	-	-	-	-
Hours of sunshine:	-	-	-	-	-	-

Sutter Creek weather averages

Annual high temperature:	71.8°F
Annual low temperature:	49°F
Average temperature:	60.4°F
Average annual precipitation - rainfall:	33.19 inch
Days per year with precipitation - rainfall:	-
Annual hours of sunshine:	-
Av. annual snowfall:	-



Climate data for sutter hill cdf, Longitude: -120.8, Latitude: 38.3772
Average weather Sutter Creek, CA - 95685 - 1981-2010 normals

Jan: January, Feb: February, Mar: March, Apr: April, May: May, Jun: June, Jul: July, Aug: August, Sep: September, Oct: October, Nov: November, Dec: December

[Climograph of Sutter Creek on your website](#)