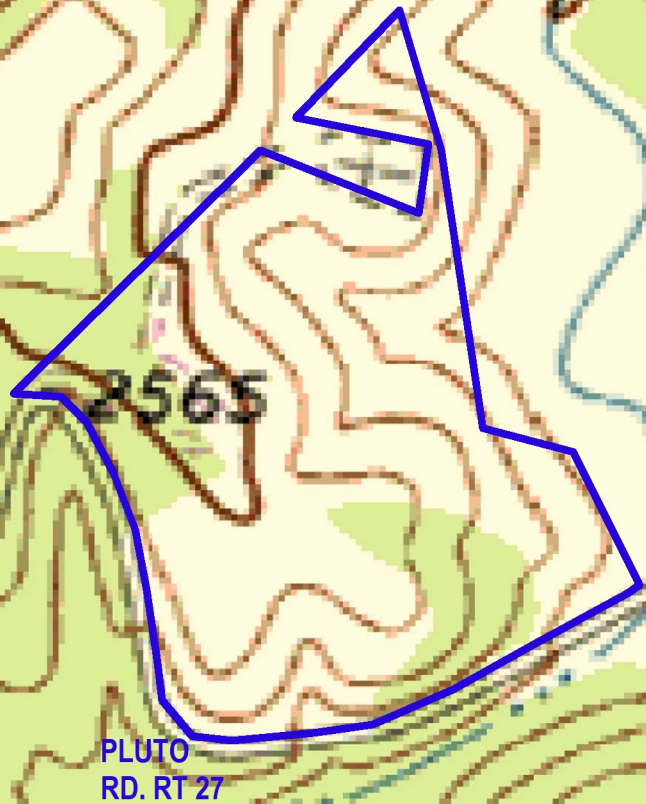
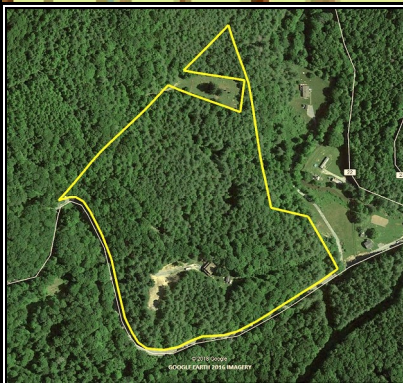


# KAY'S CABIN



**FOXFIRE**  
REALTY



KAY'S CABIN, Raleigh County, WV (topographic map)  
Elevation Range: 2398' - 2572' +/-; Google Coordinates:  
LAT 37.735958 (N), LON -81.013193 (W)  
This map is for general location purposes only. Consult a  
licensed land surveyor for actual boundary location and acreage.  
TOPO MAP SCALE: 1 INCH = 400 FEET

RICHARD GRIST, Broker - Auctioneer - Forester  
304.646.8837 Richard@Foxfirenation.com  
[WWW.FOXFIRENATION.COM](http://WWW.FOXFIRENATION.COM)

SCALE 1:4800

