

FOR SALE

266 Acres MOL

Triple T Estate

Restricted Estate Home Sites

Recreational and Ranch Land

Lott, Falls County, TX 76656

\$868,500

For a virtual tour and investment offering go to: www.texasfarmandranchrealty.com



Morgan Tindle (Broker)

254-721-9615 (mobile)

254-803-5263 (LAND)

Bob Dube (Broker)

512-423-6670 (mobile)

morgan@texasfarmandranchrealty.com

www.texasfarmandranchrealty.com

**FOR
SALE**

266 Acres MOL – Triple T Estates Restricted Estate Home Sites, Recreational and Ranch Land Lott, Falls County, TX 76656

Property Highlights

Location – The property fronts County Road 473 and Hwy 77 in Lott, TX. Robinson take Hwy 77 South and travel 15.5 miles. Turn right on FM 935 and travel one mile. Turn left on CR 473 and travel 2 miles. The property will be on the left look for the Texas Farm and Ranch Realty sign. Located just 25 minutes from Waco, approximately 1.5 hours from Fort Worth, Texas, 1 hour 20 minutes from Austin and 2 hours 15 minutes from Houston.

Acres – 266 acres MOL according to the Falls County Appraisal District and has approximately 4,934 linear feet of road frontage on County Road 473 and 250 linear feet of Hwy 77 road frontage.

Improvements- There are several places for a beautiful home site with two sides of County Road 473 frontage and Hwy 77 for multiple entrance locations. Property recently had areas of old fencing cleared and new fencing added. The property is cross fenced. A new graveled entrance built to TXDOT specs was added at the entrance of Hwy 77. Along the creek line portion of the property is great for recreational use where there have been multiple whitetail deer and elk sightings. The southern portion of the property recently had majority of the mesquites cleared.

Water –Durango- Cego Water services the area and there is an existing meter on the property. There is two ponds on the property.

Electricity –Heart of Texas Electric Co-op services the area and there is an existing electric meter on the property.

Soil – There are various soil types on the property. Please refer to the USDA Soil Map located in this brochure for soil types.

Minerals – Seller wishes to retain all owned minerals.

Topography – The land is flat with gently rolling areas and very nice home sites.

Current Use – Privately owned and is used for cattle grazing.

Ground Cover – Property is covered in native grasses and several mature trees.

Easements – An abstract of title will need to be performed to determine all easements that may exist. Easements known are for utility.

Restricted- Contact listing Broker for a complete list of restrictive covenants.

Showings - By appointment only. If applicable, buyers who are represented by an agent/broker must have its agent/broker present at all showings to participate in any co-brokerage commissions.

Presented At - \$868,500- \$3,265 an acre

Texas Farm and Ranch Realty dba Dube's Commercial, Inc., does not make any representations or warranties expressed or implied as to the accuracy of this information. All sources are deemed reliable.



Morgan Tindle (Broker)

254-721-9615 (mobile)

254-803-5263 (LAND)

Bob Dube (Broker)

512-423-6670 (mobile)

morgan@texasfarmandranchrealty.com

www.texasfarmandranchrealty.com

**FOR
SALE**

266 Acres MOL – Triple T Estates

**Restricted Estate Home Sites, Recreational and Ranch Land
Lott, Falls County, TX 76656**

Property Pictures



Morgan Tindle (Broker)

Bob Dube (Broker)

morgan@texasfarmandranchrealty.com

254-721-9615 (mobile)

512-423-6670 (mobile)

www.texasfarmandranchrealty.com

254-803-5263 (LAND)

**FOR
SALE**

266 Acres MOL – Triple T Estates

**Restricted Estate Home Sites, Recreational and Ranch Land
Lott, Falls County, TX 76656**

Property Aerial View



— "Stewards of Land" —
A DBA of Dube's Commercial, Inc. TREC# 484723

Morgan Tindle (Broker)

254-721-9615 (mobile)

254-803-5263 (LAND)

Bob Dube (Broker)

512-423-6670 (mobile)

morgan@texasfarmandranchrealty.com

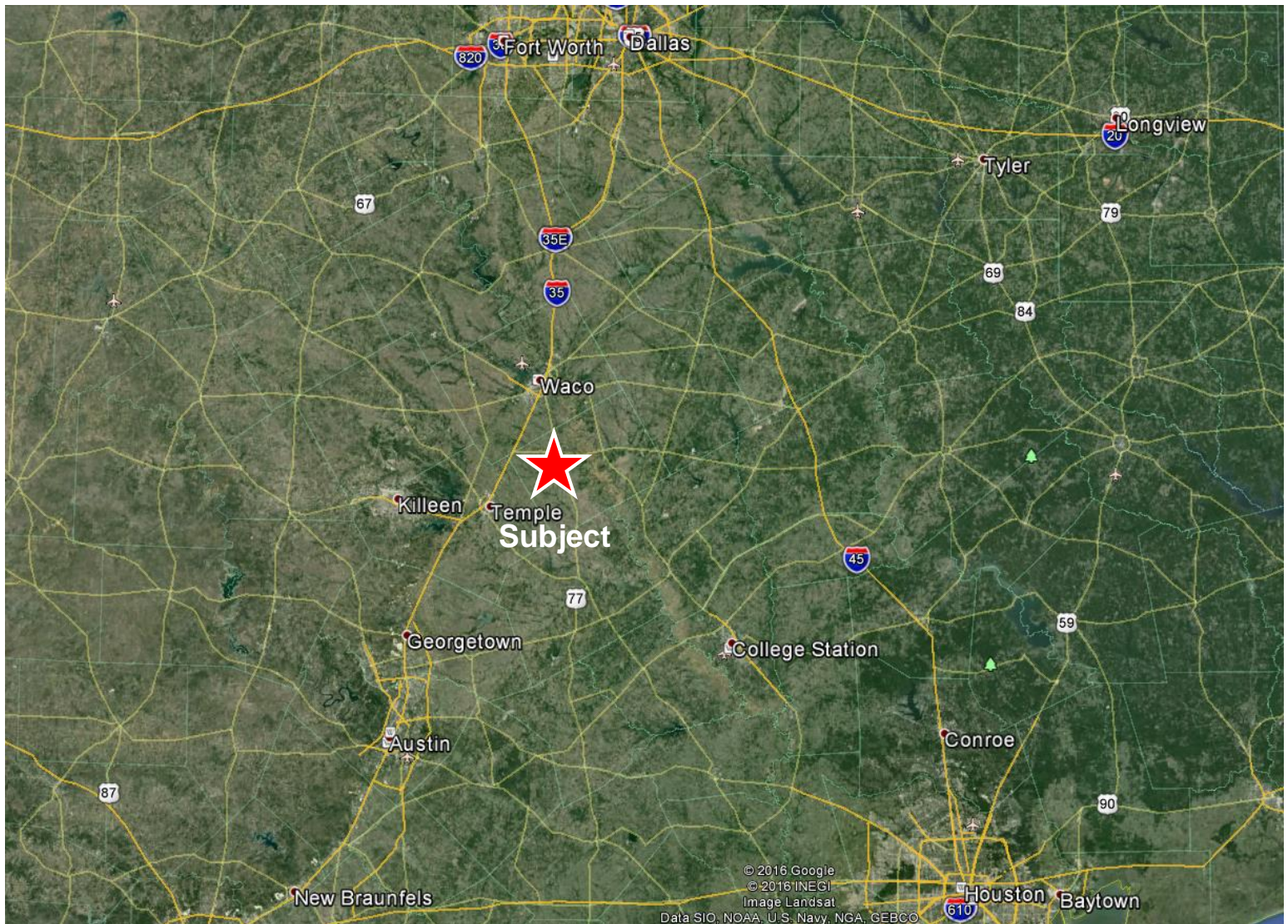
www.texasfarmandranchrealty.com

**FOR
SALE**

266 Acres MOL – Triple T Estates

**Restricted Estate Home Sites, Recreational and Ranch Land
Lott, Falls County, TX 76656**

Property Location Relative to DFW, Austin and Houston



Morgan Tindle (Broker)

254-721-9615 (mobile)

254-803-5263 (LAND)

Bob Dube (Broker)

512-423-6670 (mobile)

morgan@texasfarmandranchrealty.com

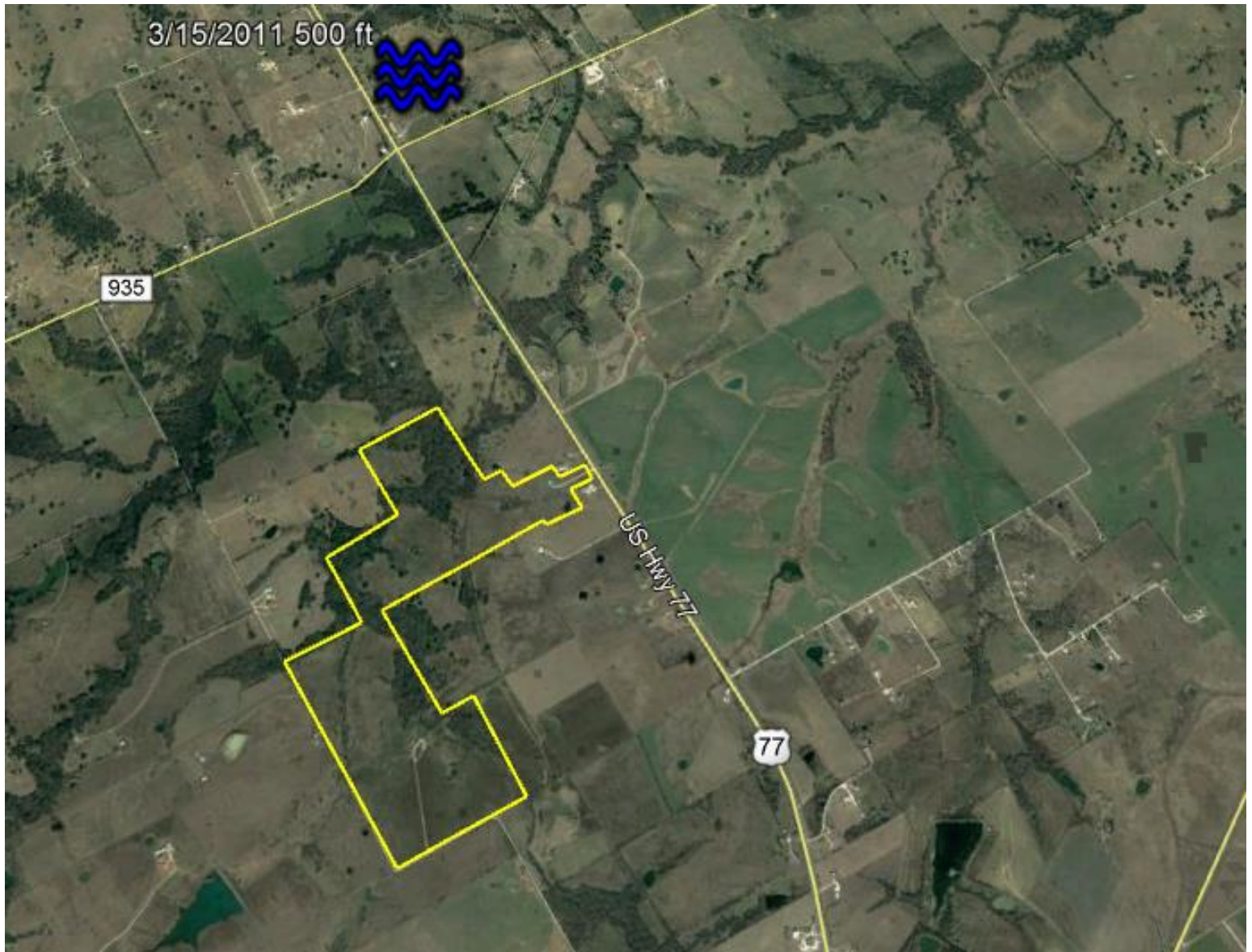
www.texasfarmandranchrealty.com

**FOR
SALE**

266 Acres MOL – Triple T Estates

**Restricted Estate Home Sites, Recreational and Ranch Land
Lott, Falls County, TX 76656**

Aerial of Water Well Nearest Property



Morgan Tindle (Broker)

254-721-9615 (mobile)

254-803-5263 (LAND)

Bob Dube (Broker)

512-423-6670 (mobile)

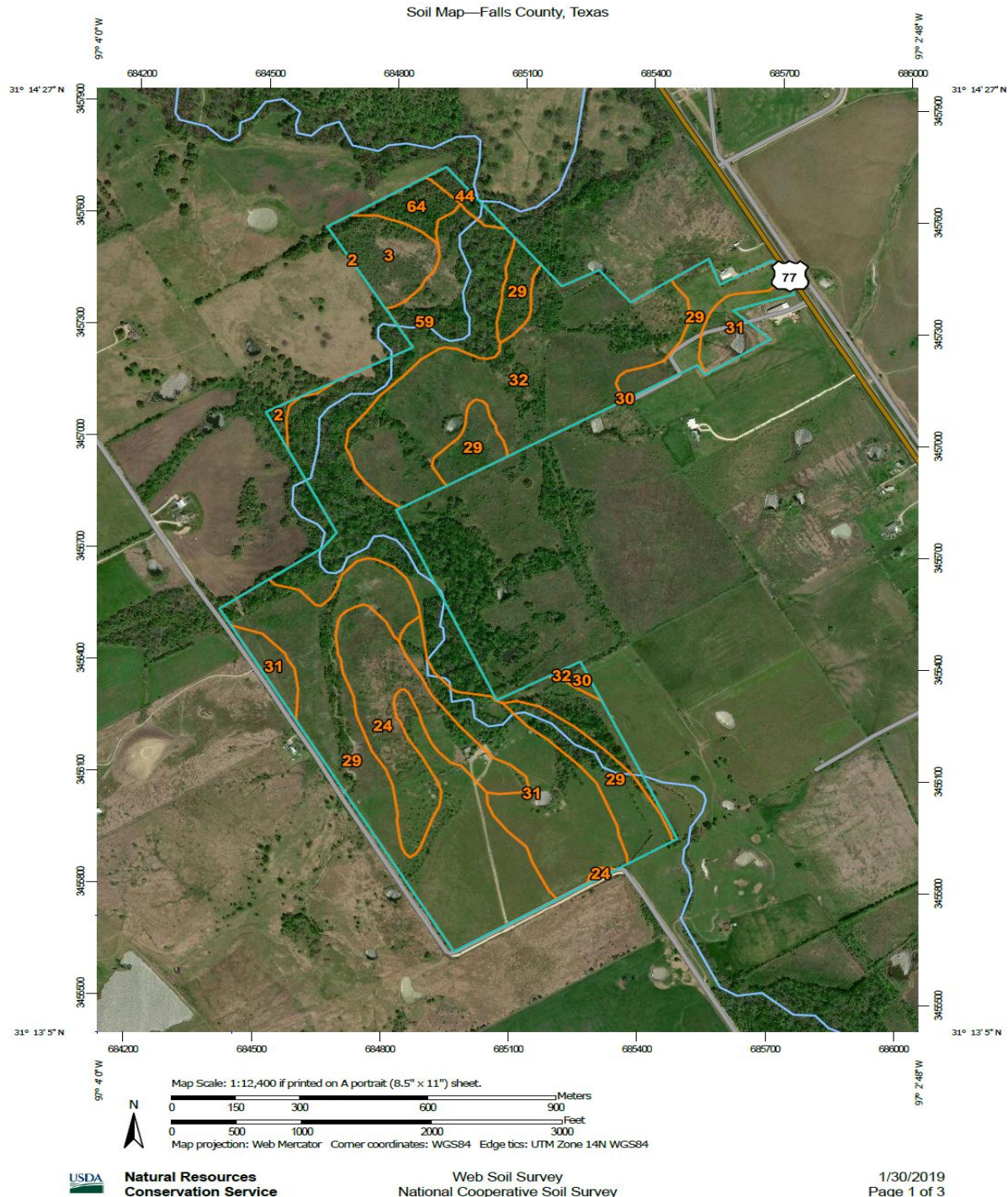
morgan@texasfarmandranchrealty.com

www.texasfarmandranchrealty.com

**FOR
SALE**

266 Acres MOL – Triple T Estates Restricted Estate Home Sites, Recreational and Ranch Land Lott, Falls County, TX 76656

Soil Map Aerial



**FOR
SALE**

266 Acres MOL – Triple T Estates

**Restricted Estate Home Sites, Recreational and Ranch Land
Lott, Falls County, TX 76656**

Soil Type Legend

Map Unit Symbol	Map Unit Name	Acres in AOI	Percent of AOI
2	Altoga silty clay, 1 to 3 percent slopes	0.9	0.3%
3	Altoga soils, 3 to 5 percent slopes, eroded	9.8	3.5%
24	Ferris-Heiden complex, 5 to 12 percent slopes, severely eroded	24.6	8.9%
29	Heiden clay, 1 to 3 percent slopes	84.2	30.5%
30	Heiden clay, 3 to 5 percent slopes	1.0	0.4%
31	Heiden clay, 2 to 5 percent slopes, eroded	36.3	13.2%
32	Heiden-Ferris complex, 5 to 8 percent slopes, eroded	55.0	20.0%
44	Ovan silty clay, frequently flooded	2.0	0.7%
59	Tinn clay, 0 to 1 percent slopes, frequently flooded	57.2	20.8%
64	Wilson loam, 1 to 3 percent slopes	4.6	1.7%
Totals for Area of Interest		275.7	100.0%



Morgan Tindle (Broker)

254-721-9615 (mobile)

254-803-5263 (LAND)

Bob Dube (Broker)

512-423-6670 (mobile)

morgan@texasfarmandranchrealty.com

www.texasfarmandranchrealty.com

**FOR
SALE**

266 Acres MOL – Triple T Estates

**Restricted Estate Home Sites, Recreational and Ranch Land
Lott, Falls County, TX 76656**

Soil Type – 2

2—Altoga silty clay, 1 to 3 percent slopes. This deep, well drained, gently sloping soil is on broad ridgetops of the uplands. Slopes are convex. Most areas are 10 to 40 acres in size.

This soil has a surface layer of grayish brown, moderately alkaline silty clay about 7 inches thick. Below the surface layer, to a depth of 24 inches, is light brownish gray, moderately alkaline silty clay. Between depths of 24 and 42 inches is light brownish gray, moderately alkaline silty clay that has brownish yellow mottles. The underlying layer, to a depth of 80 inches, is light gray, moderately alkaline silty clay that has brownish yellow mottles.

This soil is easily worked throughout a wide range of moisture conditions. Permeability is moderate, and the available water capacity is high. Roots easily penetrate the deep root zone. Runoff is medium. The hazard of water erosion is moderate. The content of lime is high, and as a result iron chlorosis occurs in sensitive plants.

Included with this soil in mapping are a few intermingled areas of Houston Black, Heiden, and Lewisville soils. The included soils make up about 5 to 10 percent of this map unit.

This soil has medium potential for production of crops, but it is limited for this use by low natural fertility. The main crops are cotton and grain sorghum, but small grain is also grown. The major objectives of management are controlling erosion and improving tilth. Terracing and growing high-residue crops help control erosion and maintain tilth.

This soil has high potential for pasture. It is well suited to improved bermudagrass, kleingrass, and weeping lovegrass. Proper management includes fertilization, weed control, and controlled grazing.

This soil has high potential for range. The climax plant community is a mixture of tall and mid grasses and an overstory of scattered elm, hackberry, and oak trees.

This soil has low potential for most urban uses. Its most restrictive limitations are shrinking and swelling with changes in moisture, slow percolation, and high corrosivity to uncoated steel. Potential for recreation is medium. The clayey surface layer is the most restrictive limitation for this use. Potential for both openland and rangeland wildlife habitat is medium. Capability subclass IIIe; Clay Loam range site.



— "Stewards of Land"
A DBA of Dube's Commercial, Inc. TREC# 484723

Morgan Tindle (Broker)

254-721-9615 (mobile)

254-803-5263 (LAND)

Bob Dube (Broker)

512-423-6670 (mobile)

morgan@texasfarmandranchrealty.com

www.texasfarmandranchrealty.com

**FOR
SALE**

266 Acres MOL – Triple T Estates

Restricted Estate Home Sites, Recreational and Ranch Land Lott, Falls County, TX 76656

Soil Type – 3

3—Altoga soils, 3 to 5 percent slopes, eroded. This map unit consists of deep, well drained, gently sloping soils on uplands. Texture of the surface layer varies in an irregular pattern from silty clay to clay loam. In places water erosion has removed the original surface layer, and many areas are dissected by shallow gullies about 100 feet apart. Slopes are convex. Most areas are about 40 acres in size.

A typical unit is about 53 percent Altoga silty clay loam; 37 percent Altoga clay loam; and 10 percent Austin, Heiden, and Lewisville soils. Austin and Heiden soils are in less sloping parts of the landscape, and Lewisville soils are intermingled with them.

Typically, these soils have a surface layer of light yellowish brown, moderately alkaline silty clay about 6 inches thick. Between depths of 6 and 40 inches is moderately alkaline silty clay that is light yellowish brown above 20 inches and very pale brown below. Soft bodies of calcium carbonate are throughout this layer. The underlying layer, to a depth of 80 inches, is light yellowish brown, moderately alkaline silty clay that has brownish yellow mottles.

These soils are easy to work throughout a wide range of moisture conditions. When dry, they are hard and will clod when plowed. Permeability is moderate, and available water capacity is high. Roots easily penetrate the deep root zone. Runoff is medium, and the hazard of water erosion is moderately severe. The lime content is high, and as a result iron chlorosis occurs in sensitive plants.

These soils have medium potential for crops. Low natural fertility is a limitation to use. The main crops are grain sorghum and small grain. The major objectives of management are controlling erosion and improving fertility and tilth. Growing high-residue crops and terracing help control erosion and maintain soil tilth.

The potential for pasture is high. Such improved grasses as bermudagrass, kleingrass, and weeping lovegrass are well suited to this soil. Fertilization, weed control, and controlled grazing are management practices that are needed to produce good yields.

These soils have high potential for range. The climax plant community is a mixture of tall and mid grasses and an overstory of scattered elm, hackberry, and oak trees.

These soils have low potential for most urban uses. The most restricted limitations are shrinking and swelling with changes in moisture, slow percolation, and high corrosivity to uncoated steel. Potential for recreation is medium. The clayey surface layer is the most restrictive limitation. Potential for both openland and rangeland wildlife habitat is medium. Capability subclass IIIe; Clay Loam range site.



—“Stewards of Land”
A DBA of Dube’s Commercial, Inc. TREC# 484723

Morgan Tindle (Broker)

Bob Dube (Broker)

morgan@texasfarmandranchrealty.com

254-721-9615 (mobile)

512-423-6670 (mobile)

254-803-5263 (LAND)

www.texasfarmandranchrealty.com

**FOR
SALE**

266 Acres MOL – Triple T Estates Restricted Estate Home Sites, Recreational and Ranch Land Lott, Falls County, TX 76656

Soil Type – 24

24—Ferris-Heiden complex, 5 to 12 percent slopes, severely eroded. This map unit consists of well drained,

sloping to strongly sloping soils on uplands. It is made up of small areas of Ferris and Heiden soils so intricately mixed that separation is not practical at the scale mapped. Most areas are rilled and are dissected by deep gullies that are 10 to 75 feet apart. Slopes are convex. Areas are in long narrow bands that range from 5 to 25 acres in size.

A typical map unit is 65 percent Ferris soils, 22 percent Heiden soils, and 13 percent gray and olive shaly clay in the bottoms of gullies. The Ferris soils occupy the sides of gullies and sloping areas leading to the gullies. The less eroded Heiden soils are between the gullies.

Typically, the Ferris soils have a surface layer of light yellowish brown, moderately alkaline clay about 10 inches thick. Between depths of 10 and 38 inches is light brownish gray, moderately alkaline clay. The soil is underlain by mottled light brownish gray and light gray, moderately alkaline shaly clay.

The Ferris soils are moderately deep to deep. Permeability is very slow, and available water capacity is high. Runoff is rapid. The hazard of erosion is severe.

Typically, the Heiden soils have a surface layer of dark grayish brown, moderately alkaline clay about 17 inches thick. Between depths of 17 and 35 inches is grayish brown, moderately alkaline clay. Between depths of 35 and 56 inches is olive, moderately alkaline clay that has olive yellow mottles. The underlying layer is light yellowish brown, moderately alkaline shaly clay that has yellow mottles.

The Heiden soils are deep. Natural fertility is high. Permeability is very slow, and the available water capacity is high. Runoff is rapid. The hazard of water erosion is severe.

These soils are not suitable for crops. They have low potential for pasture and urban use. The restrictive limitations are slope, shrinking and swelling with changes in moisture, gullies, slow percolation, and water erosion. Costly filling, shaping, and smoothing would be required to reclaim areas of these soils.

These soils have high potential for range, even though the climax vegetation has been destroyed by cultivation. They have potential for tall grasses, and live oak, elm, and hackberry trees.

The potential for recreation is low. The clayey surface layer, very slow permeability, and slope are the most restrictive limitations for this use. Potential for openland wildlife habitat is medium, and potential for rangeland wildlife habitat is low. Capability subclass VIe; Ferris part in Eroded Blackland range site, Heiden part in Blackland range site.



— "Stewards of Land"
A DBA of Dube's Commercial, Inc. TREC# 484723

Morgan Tindle (Broker)

Bob Dube (Broker)

morgan@texasfarmandranchrealty.com

254-721-9615 (mobile)

512-423-6670 (mobile)

254-803-5263 (LAND)

www.texasfarmandranchrealty.com

**FOR
SALE**

266 Acres MOL – Triple T Estates

**Restricted Estate Home Sites, Recreational and Ranch Land
Lott, Falls County, TX 76656**

Soil Type – 29

29—Heiden clay, 1 to 3 percent slopes. This deep, well drained, gently sloping soil is on narrow ridges and foot slopes of the uplands. Slopes are convex. Areas are long and are narrow to broad. They range from 10 to about 120 acres in size.

This soil has a surface layer of dark grayish brown, moderately alkaline clay about 21 inches thick. Between depths of 21 to 45 inches is grayish brown, moderately alkaline clay that has light yellowish brown mottles. The underlying material, to a depth of 80 inches, is yellow, moderately alkaline shaly clay.

This soil is difficult to work. When wet, it is sticky; when dry, it is hard and clods when plowed. Dense plowpan layers are common in cultivated areas. Permeability is very slow, and available water capacity is high. The root zone is deep, but penetration by roots is slow. Runoff is medium. The hazard of water erosion is moderate.

Included with this soil in mapping are small areas of Houston Black, Branyon, and Trinity soils. The Branyon soils occupy stream terraces and the Trinity soils are on flood plains. Houston Black soils are intermingled irregularly. The included soils make up 10 to 20 percent of this map unit.

This soil is used mainly for crops. The potential for crops is high. Cotton and grain sorghum are the main crops, but corn and small grain are also grown. The main objectives of management are controlling erosion and improving tilth. Terracing and growing crops that produce large amounts of residue help control erosion and maintain tilth.

This soil has high potential for pasture. It is well suited to improved bermudagrass, kleingrass, and King Ranch bluestem. Proper pasture management includes fertilization, weed control, and controlled grazing.

This soil has high potential for range, but very few acres are used for this purpose. The climax plant community is tall grasses and an overstory of a few large live oak, elm, and hackberry trees along drainageways.

This soil has low potential for most urban uses. The limitations that affect urban development are the shrinking and swelling with changes in moisture, corrosivity to uncoated steel, and slow percolation. The potential for recreation is low. The most restrictive limitations for this use are the clayey surface layer and the very slow permeability. Potential for openland wildlife habitat is medium, and potential for rangeland wildlife habitat is low. Capability subclass IIe; Blackland range site.



A DBA of Dube's Commercial, Inc. TREC# 484723

Morgan Tindle (Broker)

254-721-9615 (mobile)

254-803-5263 (LAND)

Bob Dube (Broker)

512-423-6670 (mobile)

morgan@texasfarmandranchrealty.com

www.texasfarmandranchrealty.com

**FOR
SALE**

266 Acres MOL – Triple T Estates

**Restricted Estate Home Sites, Recreational and Ranch Land
Lott, Falls County, TX 76656**

Soil Type – 30

30—Heiden clay, 3 to 5 percent slopes. This deep, well drained, gently sloping soil is on uplands. Slopes are convex. Areas are long and narrow and range from 5 to 20 acres in size.

The surface layer of this soil, to a depth of 20 inches, is dark grayish brown, moderately alkaline clay. Between depths of 20 and 41 inches is olive, moderately alkaline clay. The underlying layer, to a depth of 80 inches, is yellow, moderately alkaline clay that has olive yellow mottles.

This soil is difficult to work. When wet, it is sticky and plastic; when dry, it is hard and clods when plowed. Dense plowpan layers are common in cultivated areas. The permeability is very slow, and the available water capacity is high. The root zone is deep, but penetration by roots is slow. Runoff is slow. The hazard of water erosion is moderately severe.

Included with this soil in mapping are small areas of Ferris, Houston Black, Burleson, and Trinity soils. The Ferris soils occupy gullies and steeper side slopes. The Houston Black and Burleson soils are on less sloping parts of the landscape and the Trinity soils occupy flood plains. The included soils make up 10 percent of this map unit.

This soil is used about equally for crops and pasture. It has medium potential for production of crops, but it is limited by slope. Grain sorghum, cotton, and small grain are the main crops. The main objectives of management are controlling erosion and improving tilth. Terracing and growing crops that produce large amounts of residue help control erosion and maintain soil tilth.

This soil has high potential for pasture. It is well suited to improved bermudagrass, kleingrass, and King Ranch bluestem. Pasture management includes fertilization, weed control, and controlled grazing.

This soil has high potential for range, but very few acres are used for this purpose. The climax plant community is tall grasses and an overstory of a few large live oak, elm, and hackberry trees along drainageways.

This soil has low potential for most urban uses. The limitations that affect urban development are the shrinking and swelling with changes in moisture, corrosivity to uncoated steel, and slow percolation. The potential for recreation is low. The clayey surface layer and the very slow permeability are the most restrictive limitations for this use. Potential for openland wildlife habitat is medium, and potential for rangeland wildlife habitat is low. Capability subclass IIIe; Blackland range site.



—“Stewards of Land”—
A DBA of Dube’s Commercial, Inc. TREC# 484723

Morgan Tindle (Broker)

254-721-9615 (mobile)

254-803-5263 (LAND)

Bob Dube (Broker)

512-423-6670 (mobile)

morgan@texasfarmandranchrealty.com

www.texasfarmandranchrealty.com

**FOR
SALE**

266 Acres MOL – Triple T Estates

**Restricted Estate Home Sites, Recreational and Ranch Land
Lott, Falls County, TX 76656**

Soil Type – 31

31—Heiden clay, 2 to 5 percent slopes, eroded. This deep, well drained, gently sloping soil is on uplands. Most areas are rilled and have shallow gullies that are 100 to 200 feet apart. Slopes are convex. Areas are long and narrow and range from 10 to about 80 acres in size.

This soil has a surface layer of dark grayish brown, moderately alkaline clay about 17 inches thick. Between depths of 17 and 43 inches is grayish brown, moderately alkaline clay. The underlying layer is light yellowish brown, moderately alkaline clay.

This soil is difficult to work. When wet, it is sticky and plastic; when dry, it is hard and clods when plowed. Dense plowpan layers are common in cultivated areas. Permeability is very slow, and available water capacity is high. The root zone is deep, but penetration by roots is slow. Runoff is rapid. The hazard of water erosion is moderately severe.

Included with this soil in mapping are small areas of Ferris soils. This soil occupies shallow gullies and adjoining slopes. This soil makes up about 18 percent of this map unit.

Some areas of this soil are still cultivated, but most areas are now in pasture. This soil has medium potential for production of crops, but it is limited for this use because the surface layer has been eroded away. Grain sorghum, cotton, and small grain are the main crops. The main objectives of management are controlling erosion and improving tilth. Terracing and growing crops that produce large amounts of residue or deep-rooted legumes help control erosion and maintain tilth.

This soil has high potential for pasture. It is well suited to improved bermudagrass, kleingrass, and King Ranch bluestem. Pasture management includes fertilization, weed control, and controlled grazing.

This soil has high potential for range, but very few acres are used for this purpose. The climax plant community is tall grasses and an overstory of a few large live oak, elm, and hackberry trees along the drainageways.

This soil has low potential for most urban uses. Its most restrictive limitations are shrinking and swelling with changes in moisture, corrosivity to uncoated steel, and slow percolation. The potential for recreation is low. The clayey surface layer and the very slow permeability are the most restrictive limitations for this use. Potential for openland wildlife habitat is medium, and potential for rangeland wildlife habitat is low. Capability subclass IIIe; Blackland range site.



— "Stewards of Land" —
A DBA of Dube's Commercial, Inc. TREC# 484723

Morgan Tindle (Broker)

254-721-9615 (mobile)

254-803-5263 (LAND)

Bob Dube (Broker)

512-423-6670 (mobile)

morgan@texasfarmandranchrealty.com

www.texasfarmandranchrealty.com

**FOR
SALE**

266 Acres MOL – Triple T Estates

**Restricted Estate Home Sites, Recreational and Ranch Land
Lott, Falls County, TX 76656**

Soil Type – 32

32—Heiden-Ferris complex, 5 to 8 percent slopes, eroded. This map unit consists of well drained, sloping soils on uplands. It is made up of small areas of Heiden and Ferris soils so intermingled that separation is not practical at the scale selected for mapping. Most areas are rilled and have shallow gullies that are 100 to 150 feet apart. They are on convex, complex side slopes. Areas are long and narrow and range from 5 to about 150 acres in size.

A typical area of this map unit is 53 percent Heiden soils and 47 percent Ferris soils. The Ferris soils occupy the gullies and the adjoining slopes. The Heiden soils are eroded and occupy areas between gullies.

Typically, the Heiden soils have a surface layer of dark grayish brown, moderately alkaline clay about 18 inches thick. Between depths of 18 and 43 inches is grayish brown, moderately alkaline clay. The underlying layer, to a depth of 80 inches, is olive yellow, moderately alkaline clay.

The Heiden soils are deep. Permeability is very slow, and available water capacity is high. Runoff is rapid. The hazard of water erosion is severe.

Typically, the Ferris soils have a surface layer of light yellowish brown, moderately alkaline clay about 8 inches thick. Between depths of 8 and 32 inches is olive yellow, moderately alkaline clay. The underlying layer, to a depth of 45 inches, is yellow, moderately alkaline shaly clay.

The Ferris soils are moderately deep to deep. Permeability is very slow, and available water capacity is high. Runoff is rapid. The hazard of water erosion is severe.

These soils are not suited to crops. They have low potential for pasture, recreation, and urban uses. The most restrictive limitations are shrinking and swelling with changes in moisture, slope, hazard of erosion, corrosivity to uncoated steel, and very slow permeability.

These soils have high potential for range. The climax plant community is tall grasses and an overstory of live oak, elm, and hackberry trees along the drainageways.

Potential for openland wildlife habitat is medium, and potential for rangeland wildlife habitat is low. Capability subclass IVE; Heiden part is Blackland range site, Ferris part is Eroded Blackland range site.



— "Stewards of Land" —
A DBA of Dube's Commercial, Inc. TREC# 484723

Morgan Tindle (Broker)

254-721-9615 (mobile)

254-803-5263 (LAND)

Bob Dube (Broker)

512-423-6670 (mobile)

morgan@texasfarmandranchrealty.com

www.texasfarmandranchrealty.com

**FOR
SALE**

266 Acres MOL – Triple T Estates

**Restricted Estate Home Sites, Recreational and Ranch Land
Lott, Falls County, TX 76656**

Soil Type – 44

44—Ovan silty clay, frequently flooded. This deep, moderately well drained, nearly level soil is on flood plains of major streams. It is flooded two or three times each year; flooding lasts for several hours to several days. Areas are long narrow bands paralleling the stream channel. They have plane slopes of 0 to 1 percent. Individual areas range from 50 to 900 acres in size.

This soil has a surface layer of dark grayish brown, moderately alkaline silty clay about 46 inches thick. The underlying layer, to a depth of 80 inches, is grayish brown, moderately alkaline silty clay.

Permeability is very slow, and the available water capacity is high. The root zone is deep and easily penetrated by roots. Runoff is slow, and the hazard of water erosion is slight.

Included with this soil in mapping are a few areas of Ovan soils that are not flooded annually and intermingled areas of Trinity soils. The included soils make up less than 20 percent of this map unit.

This soil has low potential for production of crops, recreation, and urban uses. Its potential is limited by flooding, which can only be overcome by major flood control.

This soil has high potential for pasture. It is well suited to improved bermudagrass, common bermudagrass, johnsongrass, and kleingrass. Proper pasture management includes fertilization, controlled grazing, and weed control.

This soil has high potential for range. The climax plant community is a mixture of tall and mid grasses and an overstory of oak, elm, hackberry, cottonwood, and black willow trees along the streams.

This soil has low potential for both openland and range-land wildlife habitat. Capability subclass Vw; Clayey Bottomland range site.



—'Stewards of Land'
A DBA of Dube's Commercial, Inc. TREC# 484723

Morgan Tindle (Broker)

254-721-9615 (mobile)

254-803-5263 (LAND)

Bob Dube (Broker)

512-423-6670 (mobile)

morgan@texasfarmandranchrealty.com

www.texasfarmandranchrealty.com

**FOR
SALE**

266 Acres MOL – Triple T Estates

**Restricted Estate Home Sites, Recreational and Ranch Land
Lott, Falls County, TX 76656**

Soil Type – 59

59—Trinity clay, frequently flooded. This deep, somewhat poorly drained, nearly level soil is on flood plains of minor streams. It is flooded two or three times a year; flooding lasts from several hours to one day. These areas have plane to slightly concave slopes of 0 to 1 percent. The areas are in long, narrow bands paralleling the stream channel. Individual areas are 50 to about 500 acres in size.

The soil has a surface layer of dark gray, moderately alkaline clay about 47 inches thick. Between depths of 47 and 67 inches is gray, moderately alkaline clay. The underlying layer, to a depth of 80 inches, is olive gray, moderately alkaline clay.

Permeability is very slow, and available water capacity is high. The root zone is deep, but the clayey material restricts root penetration. Runoff is very slow. The hazard of water erosion is slight.

Included with this soil in mapping are a few areas of Trinity soils that are not flooded annually. Also included are a few intermingled areas of Ovan and Gowen soils. The included soils make up about 10 to 20 percent of this map unit.

This soil has low potential for production of crops, recreation, and urban uses. It is limited for this use by flooding, which can be overcome only by major flood control. The clayey surface layer also restricts some urban and recreation uses.

This soil has high potential for pasture. It is well suited to improved bermudagrass, common bermudagrass, johnsongrass, and kleingrass. Proper management includes fertilization, weed control, and controlled grazing.

This soil has medium potential for range production. The climax plant community is a mixture of tall and mid grasses and an overstory of oak, elm, hackberry, cottonwood, and black willow trees adjacent to the stream.

This soil has medium potential for both openland and rangeland wildlife habitat. Capability subclass Vw; Clayey Bottomland range site.



— "Stewards of Land" —
A DBA of Dube's Commercial, Inc. TREC# 484723

Morgan Tindle (Broker)

254-721-9615 (mobile)

254-803-5263 (LAND)

Bob Dube (Broker)

512-423-6670 (mobile)

morgan@texasfarmandranchrealty.com

www.texasfarmandranchrealty.com

**FOR
SALE**

266 Acres MOL – Triple T Estates

**Restricted Estate Home Sites, Recreational and Ranch Land
Lott, Falls County, TX 76656**

Soil Type – 64

64—Wilson loam, 1 to 3 percent slopes. This deep, somewhat poorly drained, gently sloping soil is on uplands and terraces. Slopes are plane or slightly concave. Areas range from 15 to 200 acres in size.

This soil has a surface layer of dark grayish brown, slightly acid loam about 6 inches thick. Between depths of 6 and 22 inches is dark gray, neutral silty clay. Between depths of 22 and 39 inches is gray, mildly alkaline silty clay. Between depths of 39 and 64 inches is light brownish gray, moderately alkaline silty clay that has yellowish brown mottles. The underlying layer, to a depth of 80 inches, is light olive gray, moderately alkaline silty clay that has yellow and strong brown mottles.

This soil is difficult to work because of dense plowpan layers that form in cultivated areas. Permeability is very slow, and the available water capacity is high. The root zone is deep, but root penetration is slow and difficult in the underlying layers. Runoff is medium. The hazard of water erosion is moderate.

Included with this soil in mapping are a few intermingled areas of Wilson silty clay loam and Crockett soils. The included soils make up about 10 to 20 percent of this map unit.

This soil has medium potential for production of crops, but it is limited by surface crusting and rapid loss of soil moisture during the summer. The major crops are grain sorghum, cotton, and small grain for winter grazing. The major objectives of management are controlling erosion, maintaining fertility, and improving tilth. Growing crops that produce large amounts of residue or growing deep-rooted legumes helps control erosion and maintain the soil tilth.

This soil has medium potential for pasture. It is well suited to coastal bermudagrass, King Ranch bluestem, and weeping lovegrass. Proper management includes fertilization, weed control, and controlled grazing.

This soil has medium potential for range. The climax plant community is a mixture of tall and mid grasses and an overstory of a few live oak, elm, and hackberry trees along streams and occasionally in motts.

This soil has low potential for most urban uses. Its most restrictive limitations are shrinking and swelling with changes in moisture, occasional wetness, low strength, corrosivity to uncoated steel, and slow percolation. The potential for recreation is medium. Occasional wetness and the very slow permeability are the most restrictive limitations for this use. Potential for both openland and rangeland wildlife habitat is medium. Capability subclass IIIe; Claypan Prairie range site.



A DBA of Dube's Commercial, Inc. TREC# 484723

Morgan Tindle (Broker)

254-721-9615 (mobile)

254-803-5263 (LAND)

Bob Dube (Broker)

512-423-6670 (mobile)

morgan@texasfarmandranchrealty.com

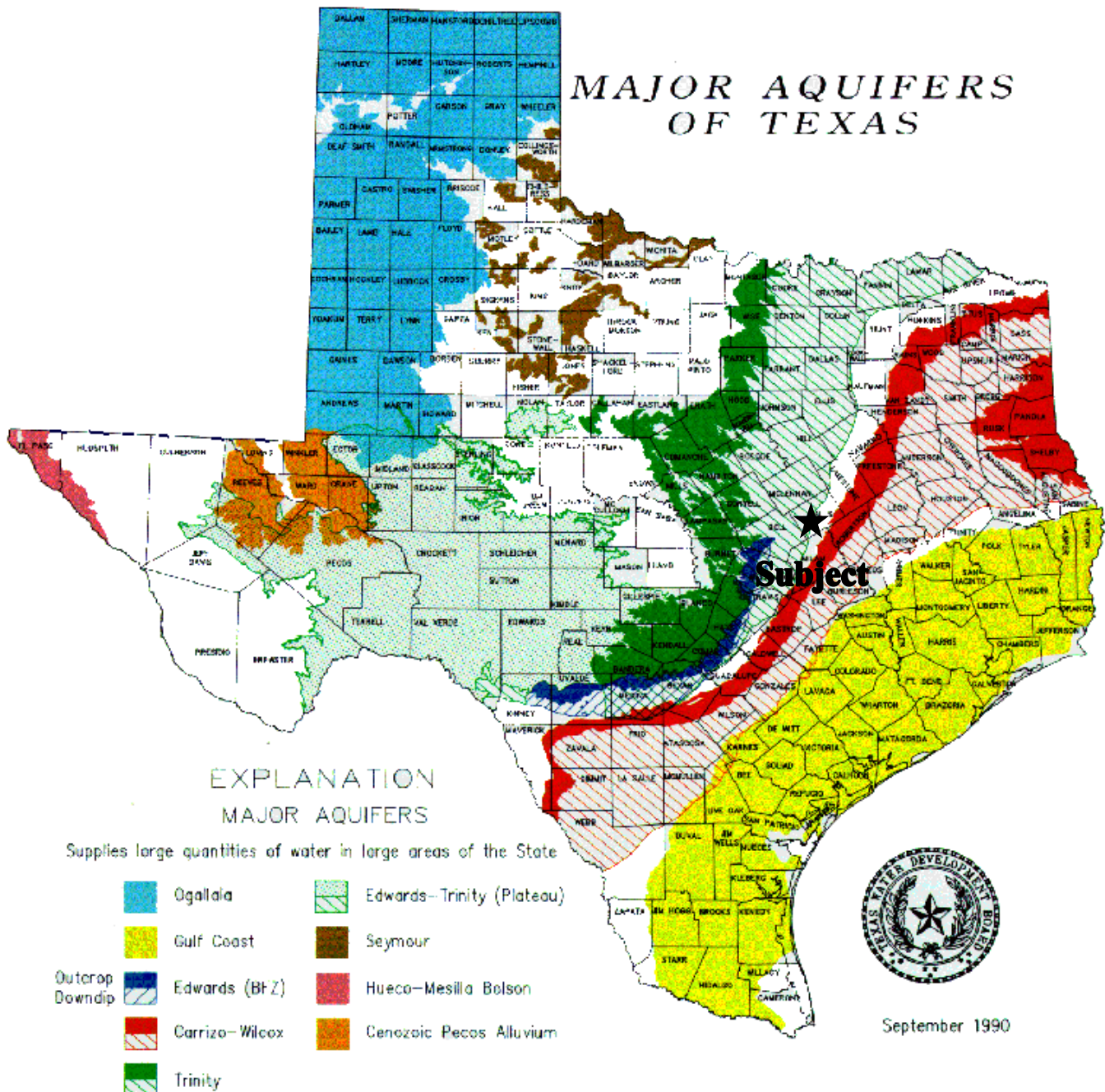
www.texasfarmandranchrealty.com

**FOR
SALE**

266 Acres MOL – Triple T Estates

**Restricted Estate Home Sites, Recreational and Ranch Land
Lott, Falls County, TX 76656**

Property Location to Major Aquifers of Texas



TEXAS
FARM & RANCH REALTY

—“Stewards of Land”—
A DBA of Dube’s Commercial, Inc. TREC# 484723

Morgan Tindle (Broker)

Bob Dube (Broker)

morgan@texasfarmandranchrealty.com

254-721-9615 (mobile)

512-423-6670 (mobile)

www.texasfarmandranchrealty.com

254-803-5263 (LAND)

**FOR
SALE**

266 Acres MOL – Triple T Estates

**Restricted Estate Home Sites, Recreational and Ranch Land
Lott, Falls County, TX 76656**

CONFIDENTIALITY & DISCLAIMER

The information contained in the following Investment Brochure is proprietary and strictly confidential. It is intended to be reviewed only by the party receiving it from Dube's Commercial Inc. and should not be made available to any other person or entity without the written consent of Dube's Commercial Inc. This Investment Brochure has been prepared to provide summary information to prospective investors, and to establish only a preliminary level of interest in the subject property. The information contained herein is not a substitute for a thorough due diligence investigation. Dube's Commercial Inc. makes no warranty or representation, with respect to the income or expenses for the subject property, the future projected financial performance of the property, the size and square footage of the property and improvements, the presence or absence of contaminating substances, PCB's or asbestos, the compliance with State and Federal regulations, the physical condition of the improvements thereon, or the financial condition or business prospects of any tenant, or any tenant's plans or intentions to continue its occupancy of the subject property. The information contained in this Investment Brochure has been obtained from sources we believe to be reliable; however, Dube's Commercial Inc. makes no warranty or representation whatsoever regarding the accuracy or completeness of the information provided.

**THE TEXAS REAL ESTATE COMMISSION (TREC) REGULATES
REAL ESTATE BROKERS AND SALES AGENTS, REAL ESTATE INSPECTORS,
HOME WARRANTY COMPANIES, EASEMENT AND RIGHT-OF-WAY AGENTS
AND TIMESHARE INTEREST PROVIDERS**

**YOU CAN FIND MORE INFORMATION AND
CHECK THE STATUS OF A LICENSE HOLDER AT
WWW.TREC.TEXAS.GOV**

**YOU CAN SEND A COMPLAINT AGAINST A LICENSE HOLDER TO TREC
A COMPLAINT FORM IS AVAILABLE ON THE TREC WEBSITE**

**TREC ADMINISTERS TWO RECOVERY FUNDS WHICH MAY BE USED TO
SATISFY A CIVIL COURT JUDGMENT AGAINST A BROKER, SALES AGENT,
REAL ESTATE INSPECTOR, OR EASEMENT OR RIGHT-OF-WAY AGENT,
IF CERTAIN REQUIREMENTS ARE MET**

**IF YOU HAVE QUESTIONS OR ISSUES ABOUT THE ACTIVITIES OF
A LICENSE HOLDER, THE COMPLAINT PROCESS OR THE
RECOVERY FUNDS, PLEASE VISIT THE WEBSITE OR CONTACT TREC AT**



**TEXAS REAL ESTATE COMMISSION
P.O. BOX 12188
AUSTIN, TEXAS 78711-2188
(512) 936-3000**



Morgan Tindle (Broker)

254-721-9615 (mobile)

254-803-5263 (LAND)

Bob Dube (Broker)

512-423-6670 (mobile)

morgan@texasfarmandranchrealty.com

www.texasfarmandranchrealty.com



Information About Brokerage Services

11-2-2015

Texas law requires all real estate license holders to give the following information about brokerage services to prospective buyers, tenants, sellers and landlords.

TYPES OF REAL ESTATE LICENSE HOLDERS:

- A **BROKER** is responsible for all brokerage activities, including acts performed by sales agents sponsored by the broker.
- A **SALES AGENT** must be sponsored by a broker and works with clients on behalf of the broker.

A BROKER'S MINIMUM DUTIES REQUIRED BY LAW (A client is the person or party that the broker represents):

- Put the interests of the client above all others, including the broker's own interests;
- Inform the client of any material information about the property or transaction received by the broker;
- Answer the client's questions and present any offer to or counter-offer from the client; and
- Treat all parties to a real estate transaction honestly and fairly.

A LICENSE HOLDER CAN REPRESENT A PARTY IN A REAL ESTATE TRANSACTION:

AS AGENT FOR OWNER (SELLER/LANDLORD): The broker becomes the property owner's agent through an agreement with the owner, usually in a written listing to sell or property management agreement. An owner's agent must perform the broker's minimum duties above and must inform the owner of any material information about the property or transaction known by the agent, including information disclosed to the agent or subagent by the buyer or buyer's agent.

AS AGENT FOR BUYER/TENANT: The broker becomes the buyer/tenant's agent by agreeing to represent the buyer, usually through a written representation agreement. A buyer's agent must perform the broker's minimum duties above and must inform the buyer of any material information about the property or transaction known by the agent, including information disclosed to the agent by the seller or seller's agent.

AS AGENT FOR BOTH - INTERMEDIARY: To act as an intermediary between the parties the broker must first obtain the written agreement of *each party* to the transaction. The written agreement must state who will pay the broker and, in conspicuous bold or underlined print, set forth the broker's obligations as an intermediary. A broker who acts as an intermediary:

- Must treat all parties to the transaction impartially and fairly;
- May, with the parties' written consent, appoint a different license holder associated with the broker to each party (owner and buyer) to communicate with, provide opinions and advice to, and carry out the instructions of each party to the transaction.
- Must not, unless specifically authorized in writing to do so by the party, disclose:
 - that the owner will accept a price less than the written asking price;
 - that the buyer/tenant will pay a price greater than the price submitted in a written offer; and
 - any confidential information or any other information that a party specifically instructs the broker in writing not to disclose, unless required to do so by law.

AS SUBAGENT: A license holder acts as a subagent when aiding a buyer in a transaction without an agreement to represent the buyer. A subagent can assist the buyer but does not represent the buyer and must place the interests of the owner first.

TO AVOID DISPUTES, ALL AGREEMENTS BETWEEN YOU AND A BROKER SHOULD BE IN WRITING AND CLEARLY ESTABLISH:

- The broker's duties and responsibilities to you, and your obligations under the representation agreement.
- Who will pay the broker for services provided to you, when payment will be made and how the payment will be calculated.

LICENSE HOLDER CONTACT INFORMATION: This notice is being provided for information purposes. It does not create an obligation for you to use the broker's services. Please acknowledge receipt of this notice below and retain a copy for your records.

Buyers who are represented by an agent/broker must have their agent/broker actively involved and present at all showings to participate in any co-broker commissions.

<u>Dube's Commercial, Inc.</u>	<u>484723</u>	<u>bob@dubescmercial.com</u>	<u>(512) 671-8008</u>
Licensed Broker/Broker Firm Name or Primary Assumed Business Name	License No.	Email	Phone
<u>Robert T. Dube</u>	<u>365515</u>	<u>bob@dubescmercial.com</u>	<u>(512) 671-8008</u>
Designated Broker of Firm	License No.	Email	Phone
<u>Robert T. Dube</u>	<u>365515</u>	<u>bob@dubescmercial.com</u>	<u>(284) 803-5263</u>
Licensed Supervisor of Sales Agent/ Associate	License No.	Email	Phone
<u>Morgan Tindle</u>	<u>644820</u>	<u>morgan@texasfarmandranchrealt</u>	<u>(254) 803-5263</u>
Sales Agent/Associate's Name	License No.	y.com Email	Phone

Buyer/Tenant/Seller/Landlord Initials

Date

Regulated by the Texas Real Estate Commission

Information available at www.trec.texas.gov

TAR 2501

ABS 1-0

Dube's Commercial Inc 401 Congress Austin, TX 78701
Robert Dube

Phone: (512)423-6670

Fax: (512)671-8011

Info about Bro

Produced with zipForm® by zipLogix 18070 Fifteen Mile Road, Fraser, Michigan 48026 www.ziplogix.com