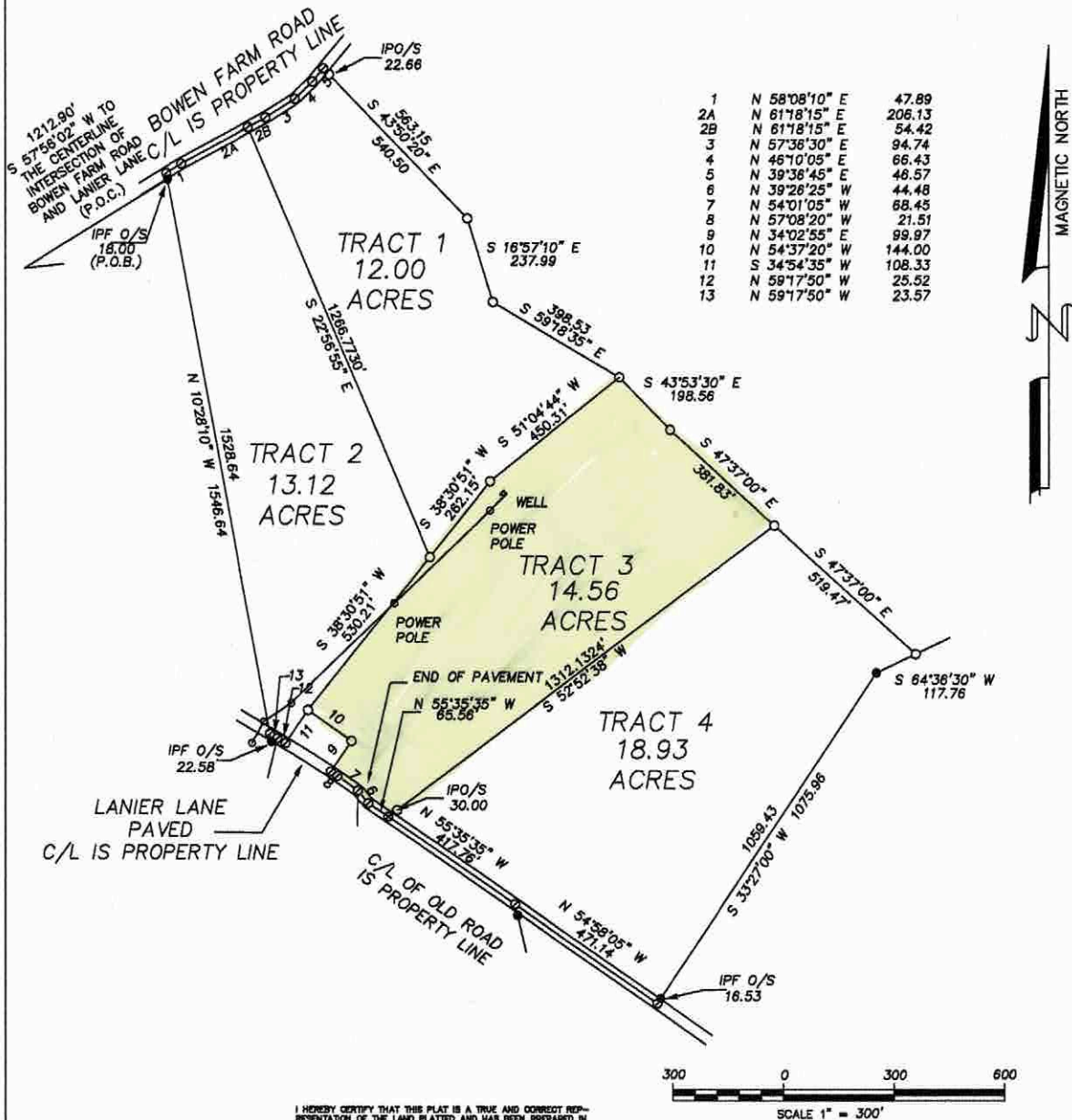



THOMAS R. PAUL GA. RLS#2474



I HEREBY CERTIFY THAT THIS PLAT IS A TRUE AND CORRECT REPRESENTATION OF THE LAND PLATTED AND HAS BEEN PREPARED IN CONFORMITY WITH THE MINIMUM STANDARDS AND REQUIREMENTS OF LAW.

SURVEY FOR:				
BM#: 235	COUNTY: OGLETHORPE	STATE: GEORGIA	DATE: 02-15-19	
THEODOLITE: TOPGUN	DIST. EQUIP.: TOPGUN	CLOSURE: 1"/30,000'	ANGLE CLOSURE: 2"/ANGLE	ADJUSTMENT: NONE
			ADJ. CLOSURE: 1"/30,000'	
DRAWN BY: T. PAUL			DRAWING NO.: 19019A	
FIELD BOOK: IDS, DM				