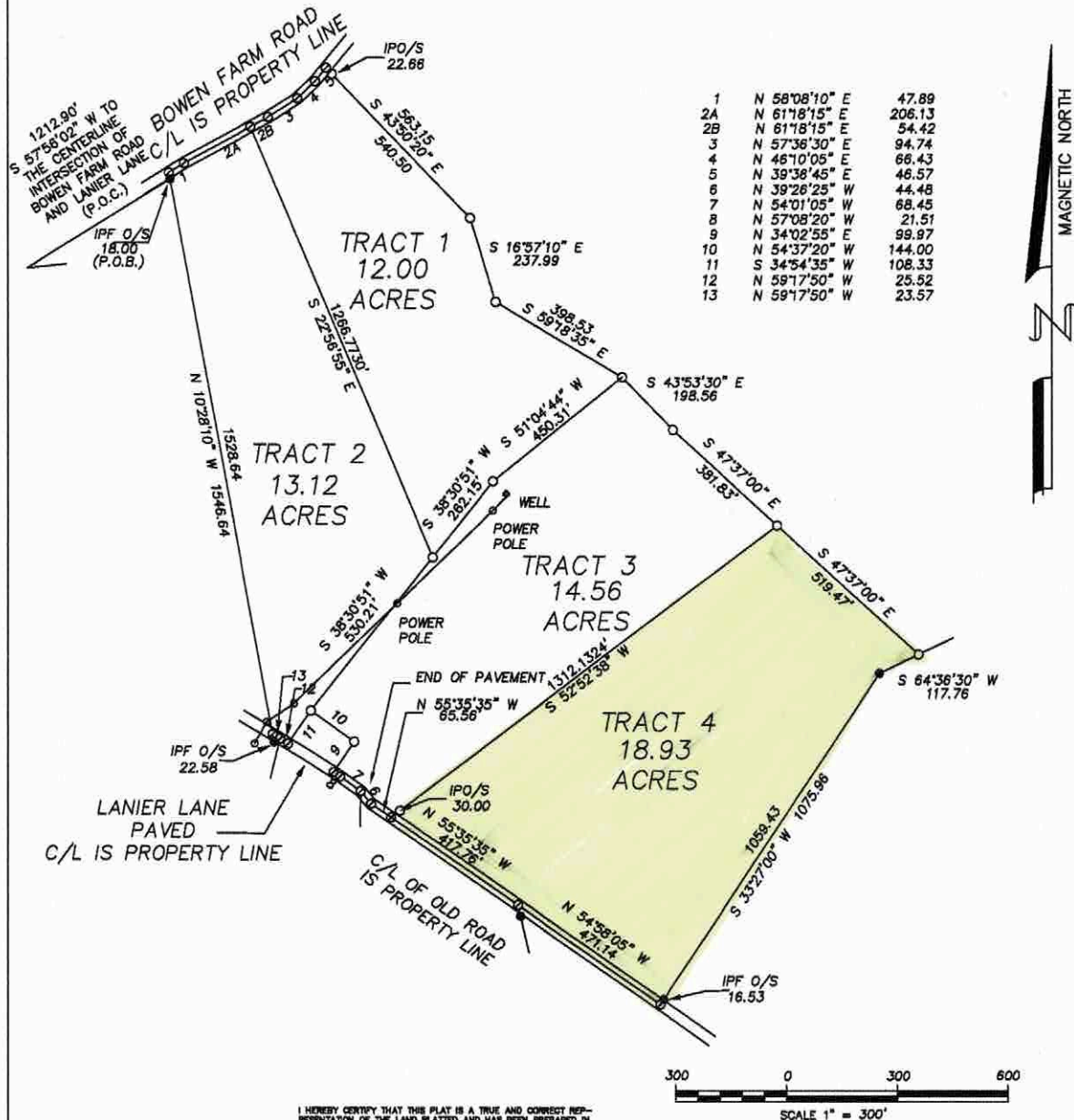


● IPF - IRON PIN FOUND
 ○ IPS - IRON PIN SET
 ⊙ - TRAVERSE POINT
 □ CM - CONCRETE MONUMENT

AS REQUIRED BY SUBSECTION (D) OF O.C.G.A. SECTION 15-6-67, THIS PLAT HAS BEEN PREPARED BY A LAND SURVEYOR AND APPROVED BY ALL APPLICABLE LOCAL JURISDICTIONS FOR RECORDING AS EVIDENCE BY APPROVAL CERTIFICATES, SIGNATURES, STAMPS, OR STATEMENTS HEREON. SUCH APPROVALS OR AFFIRMATIONS SHOULD BE CONFIRMED WITH THE APPROPRIATE GOVERNMENTAL BODIES BY PURCHASE OR USER OF THIS PLAT AS TO INTENDED USE OF ANY PARCELS. FURTHERMORE, THE LAND SURVEYOR CERTIFIES THAT THIS PLAT COMPLIES WITH THE MINIMUM TECHNICAL STANDARDS FOR PROPERTY SURVEYS IN GEORGIA AS SET FORTH IN THE RULES AND REGULATIONS OF THE GEORGIA BOARD OF REGISTRATION FOR PROFESSIONAL ENGINEERS AND LAND SURVEYORS AND AS SET FORTH IN O.C.G.A. SECTION 15-6-67

THOMAS R. PAUL GA. RLS#2474



I HEREBY CERTIFY THAT THIS PLAT IS A TRUE AND CORRECT REPRESENTATION OF THE LAND PLATTED AND HAS BEEN PREPARED IN CONFORMITY WITH THE MINIMUM STANDARDS AND REQUIREMENTS OF LAW.

SURVEY FOR:

END: 235	COUNTY: OGLETHORPE	STATE: GEORGIA	DATE: 02-15-19
THEODOLITE: TOPGUN	DIST. EQUIP.: TOPGUN	CLOSURE: 1"/30,000'	ANGLE CLOSURE: 2"/ANGLE
ADJUSTMENT: NONE			ADJ. CLOSURE: 1"/30,000'
DRAWN BY: T. PAUL			DRAWING NO.: 19018A
FIELD BOOK: TDS DM			

SURVEYED BY:
THOMAS R. PAUL
 LAND SURVEYING
 P.O. BOX 198
 LEXINGTON, GA. 30648
 708-433-1037